

Shipping & Delivery Schedules will vary for all patterns, specialty and Walker textures. Please contact customer service regarding lead times for these glass products.

STANDARD GLASS

STANDARD PATTERN GLASS

LOW IRON PATTERN GLASS

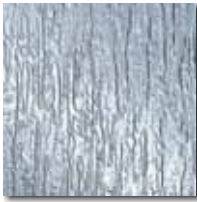


Clear (6)

Standard lead time applies to clear glass only



Aquaview (0)



Niagara (4)



P-5 (5)



Ultra Clear (u)



Satin Etch Ultra Clear (s)



Double Satin Etch Ultra Clear

• Due to the nature of low-iron glass, a variation in clarity may be noticed when comparing a small sample to a full size piece of glass.

SPECIALTY PATTERN GLASS

WALKER TEXTURES™ NUANCE STOCK



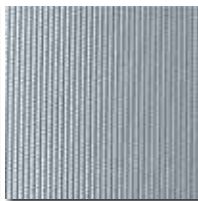
Bamboo (N)



Glue Chip (I)



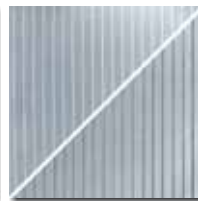
Master Carre (7)



Master Point (8)



101/301



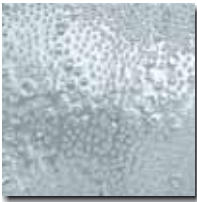
102/302



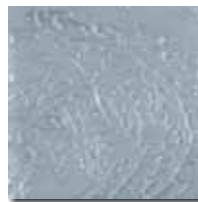
103/303



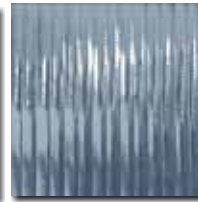
Flemish



Bubbles



Rolled Cast



Reed (E)

SPECIALTY GLASS



Azuria (1)



Bronze (B)



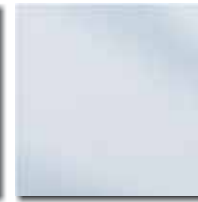
Solexia



Grey (G)



Satin Etch (Y)



Double Satin Etch



Satin Etch Coral (C)



Satin Etch Dots (D)



Satin Etch Ice (W)



Satin Etch Lines (Z)



Satin Etch Bamboo (V)

- Complete product line includes many varieties not listed here. Please call for information on glass types not shown.
- Check current price list for availability of glass types and fabrication charges.
- After normal fabrication and tempering, slight cloudiness may be present in some glass patterns. This is inherent to the glass and is not considered a defect.



P.O. Box 40228, Tuscaloosa, AL 35404-0228
 (205) 345-1013 • (800) 772-7737
 (800) 255-7320 fax
 coralsales@coralind.com • www.coralind.com

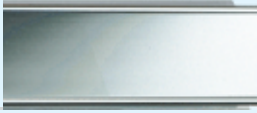


Shipping & Delivery Schedules will vary for all patterns, specialty and Walker textures. Please contact customer service regarding lead times for these glass products.

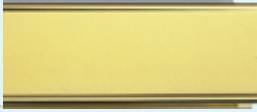
METAL FINISHES

Standard Lead Time

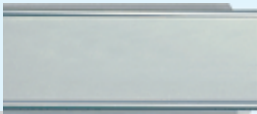
Chrome
(0)



Gold
(1)



Platinum
(6)



Brushed
Nickel
(8)



Oil-Rubbed
Bronze
(B)

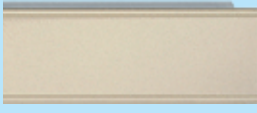


Additional Lead Time Required.
Please Check with Customer Service.

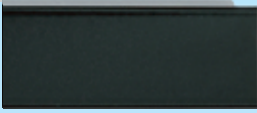
White
(R)



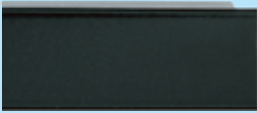
Bone
(J)



Black
(A)



Wrought
Iron
(W)



Aged
Pewter
(P)



Aged
Bronze
(Z)



Champagne
(C)



Model # Code	1/8"	3/16"	1/4"	3/8"	1/2"	5/8"	3/4"	1"
Clear	6	●	●	●	●	●	●	●

Standard lead time applies to clear glass only

STANDARD PATTERN GLASS

Model # Code	1/8"	3/16"	1/4"	3/8"	1/2"	5/8"	3/4"	1"
Aquaview	0	●	●	●				
Niagra	4	●	●	●				
P5	5	●	●	●				

SPECIALTY PATTERN GLASS

Model # Code	1/8"	3/16"	1/4"	3/8"	1/2"	5/8"	3/4"	1"
Bamboo	N		●	●				
Glue Chip	I		●	●	●			
Master Carre	7		●	●				
Master Point	8		●					
Reed	E		●					
Rolled Cast			●	●				
Bubbles				●				
Flemish			●					

LOW IRON PATTERN GLASS

Model # Code	1/8"	3/16"	1/4"	3/8"	1/2"	5/8"	3/4"	1"
Ultra Clear	U		●	●	●		●	●
Satin Etch - Ultra Clear	S		●	●	●		●	
Double Satin Etch - Ultra Clear			●	●	●		●	

SPECIALTY GLASS

Model # Code	1/8"	3/16"	1/4"	3/8"	1/2"	5/8"	3/4"	1"
Azuria	1		●	●				
Bronze	B	●	●	●	●			
Grey	G	●	●	●	●			
Satin Etch	Y	●		●	●	●	●	
Double Satin Etch			●	●	●			
Satin Etch Bamboo	V		●	●				
Satin Etch Coral	C		●	●				
Satin Etch Dots	D		●	●				
Satin Etch Ice	W		●	●				
Satin Etch Lines	Z		●	●				
Solexia			●	●				

WALKER TEXTURES™ NUANCE STOCK

Model # Code	1/8"	3/16"	1/4"	3/8"	1/2"	5/8"	3/4"	1"
101 (Series 100)			●	●				
102 (Series 100)			●	●				
103 (Series 100)			●	●				
301 (Series 300)			●	●				
302 (Series 300)			●	●				
303 (Series 300)			●	●				

Series 100 (Patterns 101-105) Velour on Satin Glass • Series 300 (Patterns 301-305) Satin on Clear Glass

P.O. Box 40228, Tuscaloosa, AL 35404-0228
(205) 345-1013 • (800) 772-7737
(800) 255-7320 fax
coralsales@coralind.com • www.coralind.com

• Complete product line includes many varieties not listed here. Please call for information on glass types not shown. • Check current price list for availability of glass types and fabrication charges. • Due to the nature of low-iron glass, a variation in clarity may be noticed when comparing a small sample to a full size piece of glass. • After normal fabrication and tempering, slight cloudiness may be present in some glass patterns. This is inherent to the glass and is not considered a defect.