

**LOCATIONS FOR  
DOOR SUB-FRAME ATTACHMENT  
TO CURTAIN WALL ALUMINUM**

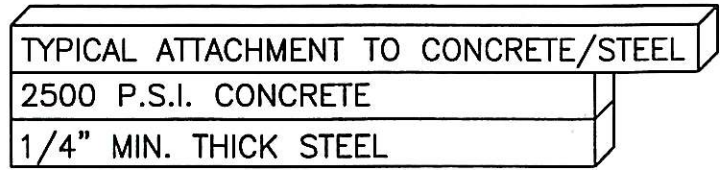
**ELEVATION E5**

**CAPTURED MULLION -LONG SPAN-WITH SR150 & 3/4" x 3-3/4"  
BAR STEEL REINFORCEMENT FOR SERIES 381 ENTRANCE DOORS**

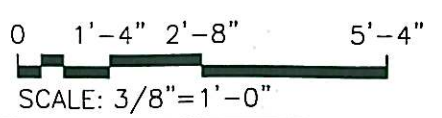
DESIGN PRESSURE = +/-80 PSF

IMPACT TEST 9LB 40Z, 2X4  
@ 50FT/SEC

MAX. ALLOWABLE DEFLECTION  
(L/180)=0.833



- NOTES:
1. GLASS SIZE=D.L.O. + 1-1/8"
  2. HORIZONTAL MULLION (DETAIL 3/8 OR 3A/8) IS OPTIONAL IN ANY BAY
  3. HEAD (DETAIL 1/8 OR 1A/8) IS OPTIONAL IN ANY BAY.



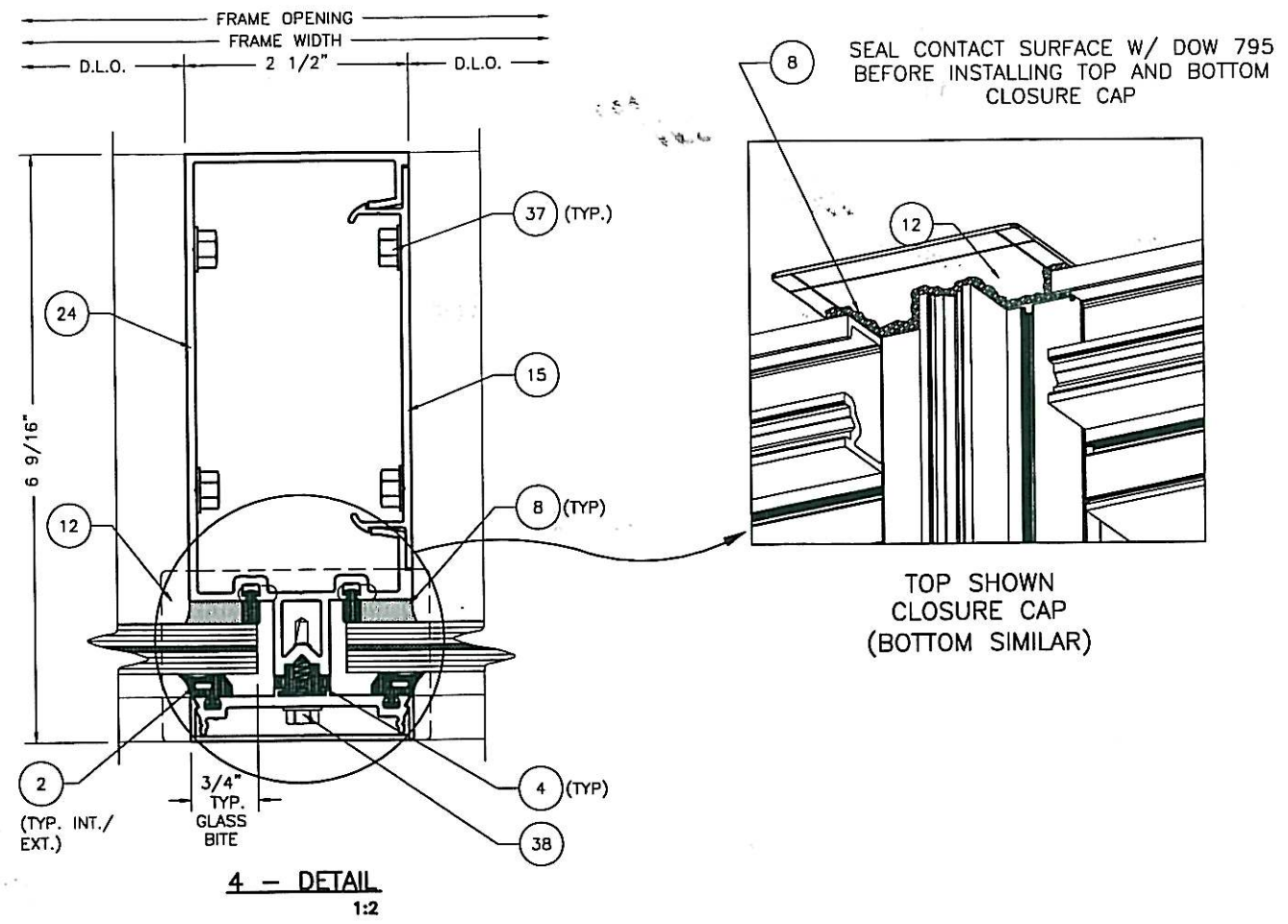
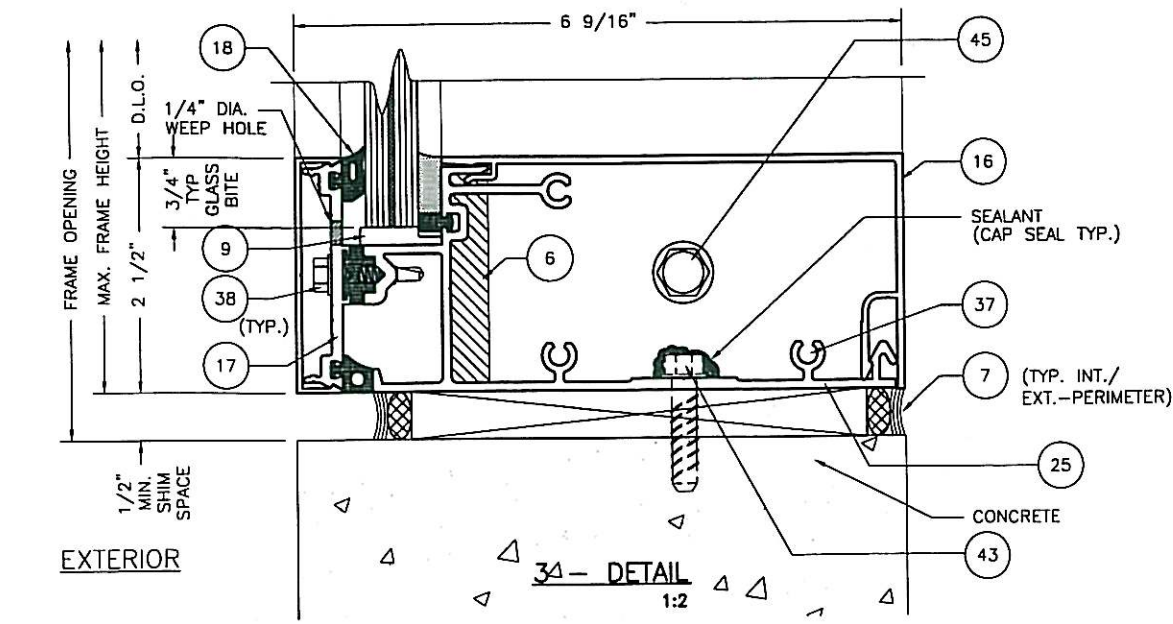
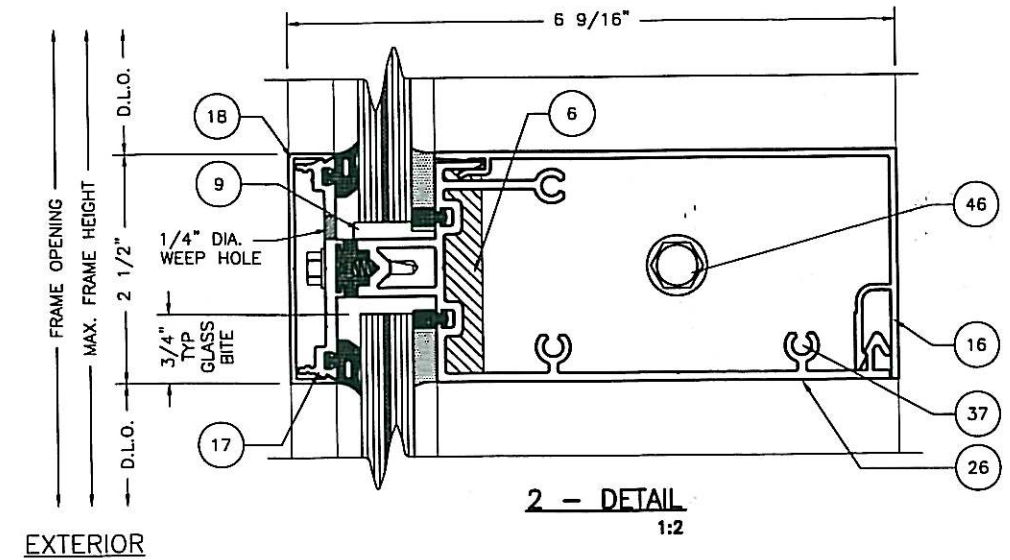
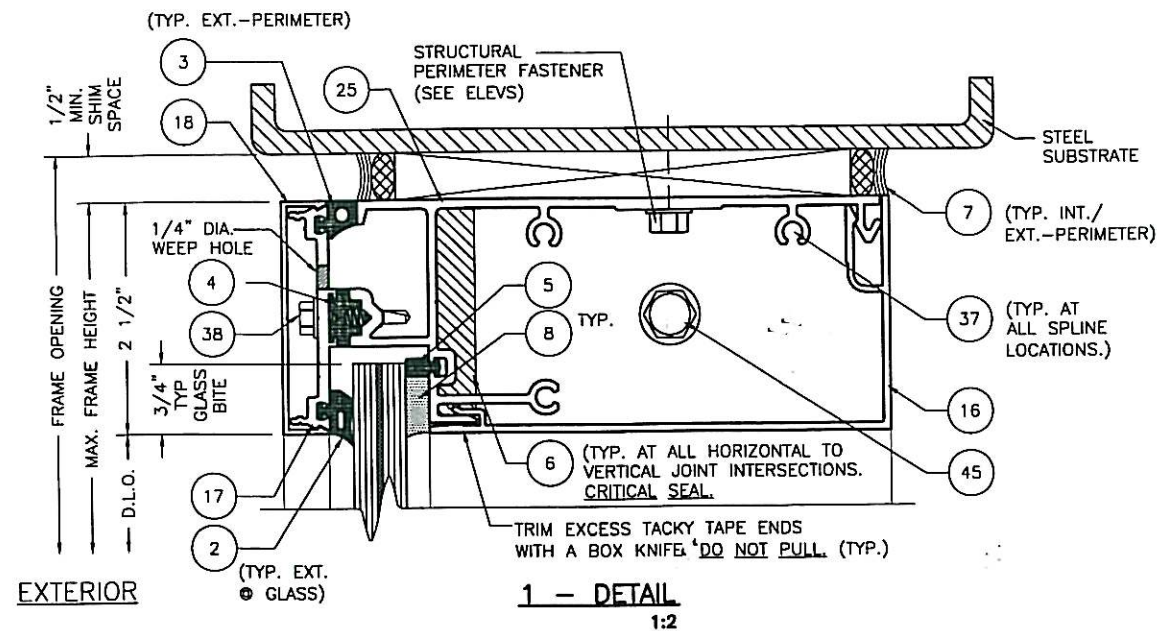
**BROADWAY ENGINEERING**  
1335 West Cass Street  
Tampa, Florida 33606

*Elizabeth A. Broadway*  
Elizabeth A. Broadway, P.E.  
Professional Engineer  
FL Registration No. 38558  
8/17/09

**DRAWINGS FOR  
FLORIDA  
PRODUCT APPROVAL**

|   |           |  |          |
|---|-----------|--|----------|
| TEST REPORT DRAWINGS<br>PW256 IMPACT-RESISTANT<br>CURTAIN WALL SYSTEM |           | E5 - CAPTURED MULLION FOR SERIES 381<br>ENTRANCE DOORS |          |
| DATE  | 8/17/2009 | DRAWN  | MLL      |
| CHECKED   | DCW       | APPROVED   | DCW      |
| PROJECT NO.   | PW256_03  | DRAWING NO.  | PW256_03 |
| SHEET   | 4 OF 12   | DESCRIPTION  |          |

**Conal**  
Architectural Products  
3010 RICE MINE ROAD, TUSCALOOSA, AL 35406  
PHONE: 800-772-7737 FAX: 800-235-7320



**Coral**  
Architectural Products  
3010 RICE MANE ROAD, TUSCALOOSA, AL 35408  
PHONE: 800-772-7737 FAX: 800-443-0261

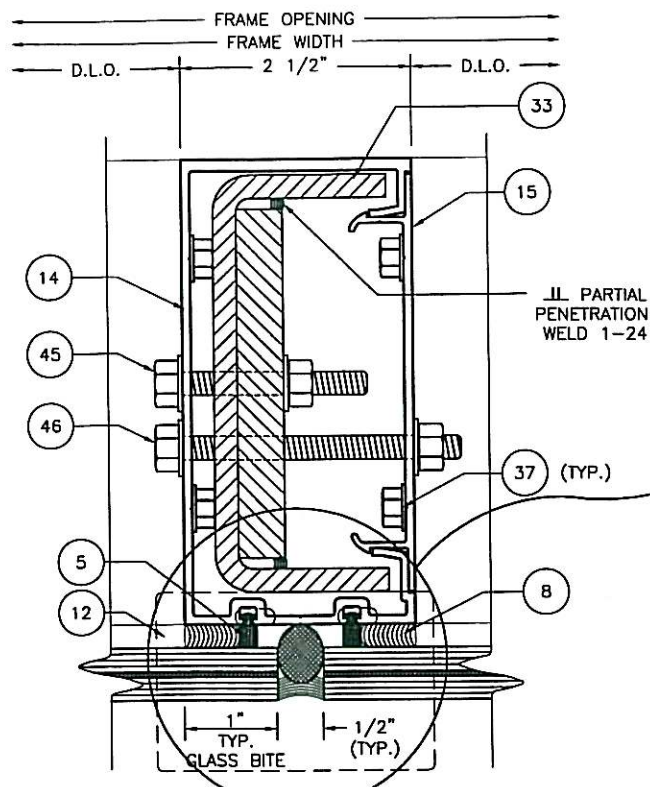
TEST REPORT DRAWINGS  
PW256 IMPACT-RESISTANT  
CURTAIN WALL SYSTEM  
FRAMING DETAILS

**BROADWAY ENGINEERING**  
1335 West Cass Street  
Tampa, Florida 33606

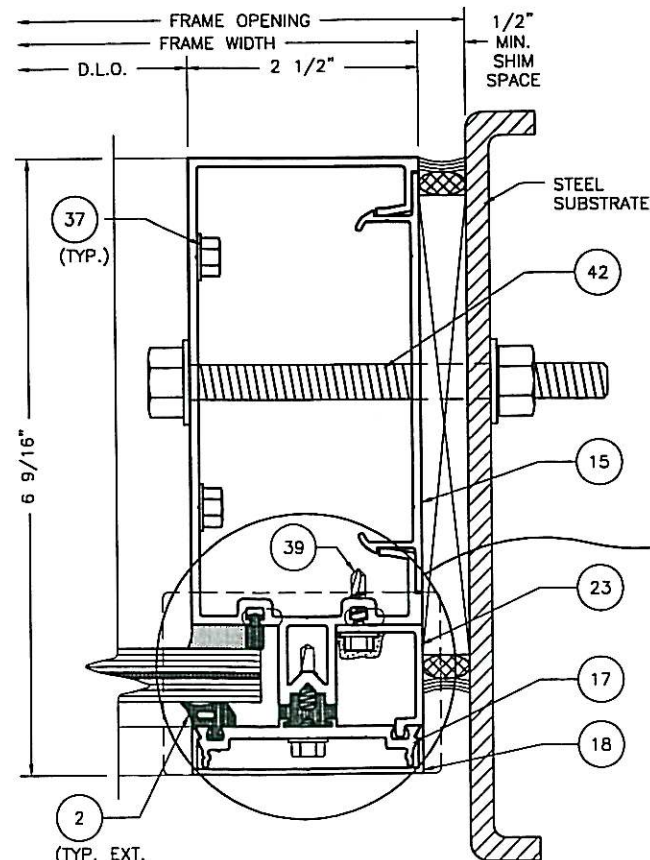
*Elizabeth A. Broadway*  
Elizabeth A. Broadway, P.E.  
Professional Engineer  
FL Registration No. 38558  
8/17/09

DRAWINGS FOR  
FLORIDA  
PRODUCT APPROVAL

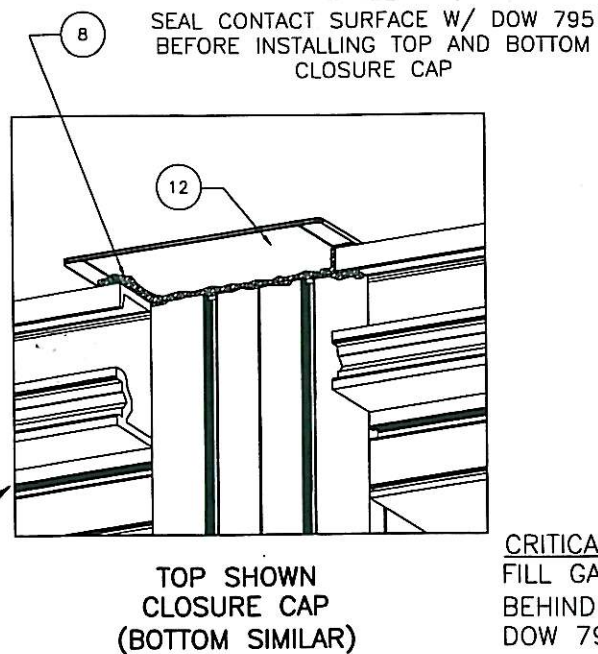
|             |           |          |
|-------------|-----------|----------|
| DATE        | 8/17/2009 |          |
| DRAWN       | CHECKED   | APPROVED |
| ALL         | DCW       | DCW      |
| PROJECT NO. |           |          |
| DRAWING NO. | PW256_03  |          |
| SHEET       | 5 OF 12   |          |



5 - DETAIL  
1:2



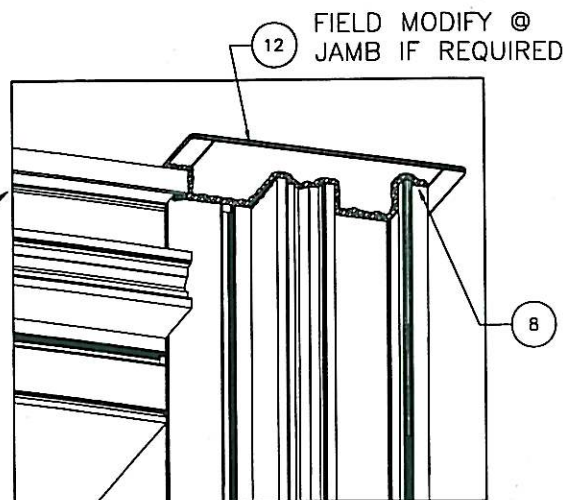
6 - DETAIL  
1:2



CRITICAL SEAL  
FILL GASKET REGLET  
BEHIND END DAM W/  
DOW 795

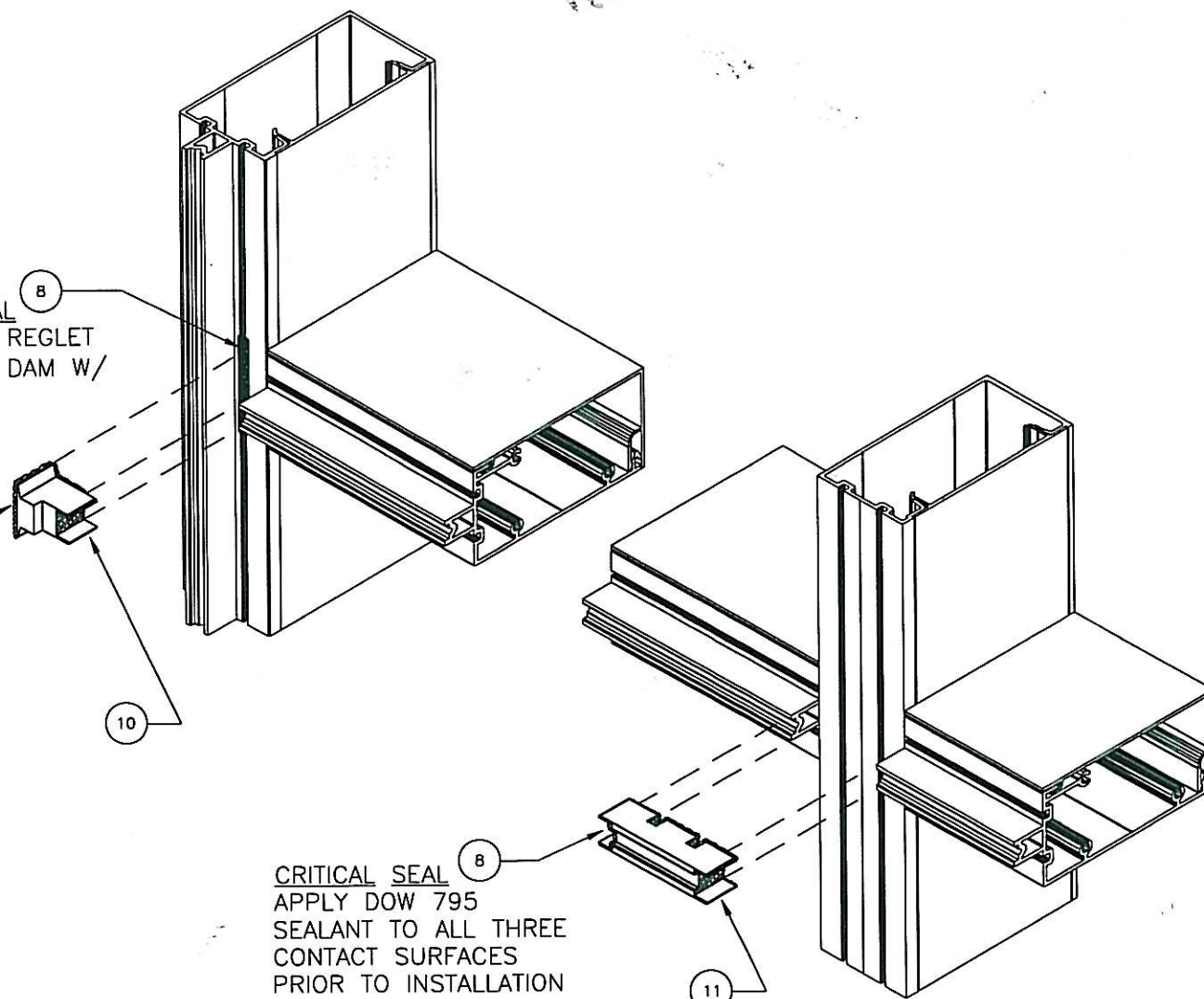
CRITICAL SEAL  
APPLY DOW 795  
SEALANT TO ALL THREE  
CONTACT SURFACES  
PRIOR TO INSTALLATION  
AT HORIZONTALS AND  
SILL.

CRITICAL SEAL  
APPLY DOW 795  
SEALANT TO ALL THREE  
CONTACT SURFACES  
PRIOR TO INSTALLATION  
AT HORIZONTALS AND  
SILL.



TOP SHOWN  
CLOSURE CAP  
(BOTTOM SIMILAR)

SEAL CONTACT SURFACE  
W/ DOW 795 BEFORE INSTALLING  
TOP AND BOTTOM CLOSURE CAP



**BROADWAY ENGINEERING**  
1335 West Cass Street  
Tampa, Florida 33606

*Elizabeth A. Broadway*  
Elizabeth A. Broadway, P.E.  
Professional Engineer  
FL Registration No. 38558  
8/17/09

DRAWINGS FOR  
FLORIDA  
PRODUCT APPROVAL

**Coral**  
Architectural Products  
3010 RICE MIKE ROAD, TUSCALOOSA, AL 35406  
PHONE: 800-772-7737 FAX: 800-443-6261

TEST REPORT DRAWINGS  
PW256 IMPACT-RESISTANT  
CURTAIN WALL SYSTEM

FRAMING DETAILS

|             |           |          |  |
|-------------|-----------|----------|--|
| DATE        | 8/17/2009 |          |  |
| DRAWN       | CHECKED   | APPROVED |  |
| MLL         | DCW       | DCW      |  |
| PROJECT NO. |           |          |  |
| DRAWING NO. |           |          |  |
| PW256_03    |           |          |  |
| SHEET       |           |          |  |
| 6 OF 12     |           |          |  |









## BILL OF MATERIALS

| ITEM NO. | P/N    | DESCRIPTION                       | DIMENSIONS              | MATERIAL                 | MANUFACTURER           | 3NOTES                                 |
|----------|--------|-----------------------------------|-------------------------|--------------------------|------------------------|--|
| 1        | NG5    | BULB GASKET - DOORFRAME STOP      | 0.165 SPACE             | EPDM                     | VARIES                 |  |
| 2        | NG10   | EXTERIOR GLAZING GASKET           | 0.250 SPACE             | EPDM                     | VARIES                 |  |
| 3        | NG11   | EXTERIOR PERIMETER GASKET         | 0.300 SPACE             | EPDM                     | VARIES                 |  |
| 4        | NG12   | PRESSURE BAR GASKET (ISOLATOR)    | 0.140 SPACE             | EPDM                     | VARIES                 |  |
| 5        | NG14   | INTERIOR SPACER GASKET            | 0.250 SPACE             | EPDM                     | VARIES                 |  |
| 6        | SM5601 | JOINT SEALANT TAPE                | 0.500 X 0.125 X VARIES  | BUTYL                    | SCHNEE-MOOREHEAD       |  |
| 7        | 795    | SILICONE - PERIMETER SEALANT      | FILL SPACE              | SILICONE                 | DOW CORNING            | USED @ PERIMETER                       |
| 8        | 995    | SILICONE - GLASS TO METAL         | FILL SPACE              | SILICONE                 | DOW CORNING            | GLASS TO METAL AND INTERNAL            |
| 9        | SB14   | SETTING BLOCK @ SILL & HORIZONTAL | 0.875 X 0.188 X 4.000   | EPDM                     | VARIES                 | 2 PER LITE                             |
| 10       | SP202  | END DAM @ CAPTURED MULLION        | 1.287 X 1.068 X 0.745   | INJECTION MOLDED PLASTIC | CORAL INDUSTRIES, INC. | LOCATE 1 @ EACH END OF HORIZONTAL      |
| 11       | SP206  | BRIDGE DAM @ B.G. MULLION         | 3.123 X 0.843 X 0.745   | INJECTION MOLDED PLASTIC | CORAL INDUSTRIES, INC. | LOCATE 1 @ HORIZONTAL AND B.G. MULLION |
| 12       | SP210  | MULLION CAP                       | 3.000 X 1.925 X 0.048   | 6063-T6 ALUMINUM         | CORAL INDUSTRIES, INC. | LOCATE @ TOP AND BOTTOM OF VERTICAL    |
| 13       | 2086   | JACKSON 2086 PANIC                | 36.000 X 7.3125 X 3.000 | ALUMINUM                 | JACKSON                |  |
| 14       | PW151  | B.G. MULLION                      | 2.500 X 5.000 X 0.094   | 6063-T6 ALUMINUM         | CORAL INDUSTRIES, INC. |  |
| 15       | PW202  | OPEN BACK MULLION FILLER          | 0.681 X 4.484 X 0.094   | 6063-T6 ALUMINUM         | CORAL INDUSTRIES, INC. |  |
| 16       | PW203  | HEAD/ SILL/ HORIZONTAL TRIM       | 2.500 X 4.980 X 0.078   | 6063-T6 ALUMINUM         | CORAL INDUSTRIES, INC. |  |
| 17       | PW204  | PRESSURE BAR                      | 2.443 X 0.433 X 0.125   | 6063-T6 ALUMINUM         | CORAL INDUSTRIES, INC. |  |
| 18       | PW205  | FACE COVER                        | 2.500 X 0.500 X 0.062   | 6063-T6 ALUMINUM         | CORAL INDUSTRIES, INC. |  |
| 19       | PW208  | FEMALE HALF 90° CORNER            | 1.625 X 6.110 X 0.094   | 6063-T6 ALUMINUM         | CORAL INDUSTRIES, INC. |  |
| 20       | PW209  | MALE HALF 90° CORNER              | 1.875 X 6.110 X 0.094   | 6063-T6 ALUMINUM         | CORAL INDUSTRIES, INC. |  |
| 21       | PW210  | INTERIOR CORNER TRIM              | 2.500 X 1.288 X 0.078   | 6063-T6 ALUMINUM         | CORAL INDUSTRIES, INC. |  |
| 22       | PW214  | SUB DOORFRAME                     | 1.000 X 4.500 X 0.080   | 6063-T6 ALUMINUM         | CORAL INDUSTRIES, INC. |  |
| 23       | PW513  | POCKET FILLER FOR PW550           | 0.937 X 1.193 X 0.078   | 6063-T6 ALUMINUM         | CORAL INDUSTRIES, INC. |  |
| 24       | PW550  | VERTICAL MULLION                  | 2.500 X 5.843 X 0.094   | 6063-T6 ALUMINUM         | CORAL INDUSTRIES, INC. |  |
| 25       | PW552  | HEAD/SILL                         | 2.390 X 5.637 X 0.094   | 6063-T6 ALUMINUM         | CORAL INDUSTRIES, INC. |  |
| 26       | PW555  | INTERMEDIATE HORIZONTAL           | 2.390 X 5.730 X 0.094   | 6063-T6 ALUMINUM         | CORAL INDUSTRIES, INC. |  |
| 27       | PW556  | GLAZING TEE - 90° CORNER          | 2.584 X 2.584 X 0.094   | 6063-T6 ALUMINUM         | CORAL INDUSTRIES, INC. |  |
| 28       | DS200  | DOORFRAME STOP                    | 0.882 X 1.149 X 0.050   | 6063-T6 ALUMINUM         | CORAL INDUSTRIES, INC. |  |
| 29       | TH4    | THRESHOLD                         | 0.500 X 4.000 X 0.125   | 6063-T6 ALUMINUM         | CORAL INDUSTRIES, INC. |  |
| 30       | TH403  | THRESHOLD CLIP                    | 1.390 X 1.516 X 1.909   | STEEL                    | VARIES                 |  |

(CONTINUED ON SHEET 11)



TEST REPORT DRAWINGS  
 PW256 IMPACT-RESISTANT  
 CURTAIN WALL SYSTEM

BILL OF MATERIALS

**BROADWAY ENGINEERING**  
 1335 West Cass Street  
 Tampa, Florida 33606

Elizabeth A. Broadway, P.E.  
 Professional Engineer  
 FL Registration No. 38558

8/17/09

DRAWINGS FOR  
 FLORIDA  
 PRODUCT APPROVAL

|             |           |          |
|-------------|-----------|----------|
| DATE        | 8/17/2009 |          |
| DRAWN       | CHECKED   | APPROVED |
| MLL         | DCW       | DCW      |
| PROJECT NO. |           |          |
| DRAWING NO. |           |          |
| PW256_03    |           |          |
| SHEET       |           |          |
| 10 OF 12    |           |          |

DESCRIPTION

DATE

REV

BY

## BILL OF MATERIALS

| ITEM NO. | P/N      | DESCRIPTION                            | DIMENSIONS                                | MATERIAL         | MANUFACTURER           | 3NOTES                                |
|----------|----------|--|---|------------------|------------------------|---------------------------------------|
| 31       | SR150    | REINFORCEMENT CHANNEL                  | 4.500 X 1.875 X 0.250                     | A36 STEEL        | VARIES                 | STEEL REINFORCEMENT FOR (14) AND (24) |
| 32       | SR504    | REINFORCEMENT CHANNEL                  | 4.562 X 1.250 X 0.250                     | A36 STEEL        | VARIES                 | STEEL REINFORCEMENT FOR (14) AND (24) |
| 33       |          | SR150 WITH REINFORCEMENT BAR           | 3.750 X 0.500                             | A36 STEEL        | VARIES                 | STEEL REINFORCEMENT FOR (14) AND (24) |
| 34       |          | SR150 WITH REINFORCEMENT BAR           | 3.750 X 0.750                             | A36 STEEL        | VARIES                 | STEEL REINFORCEMENT FOR (14) AND (24) |
| 35       | FL207    | DOOR HEADER                            | 1.750 X 4.500 X 0.085                     | 6063-T6 ALUMINUM | CORAL INDUSTRIES, INC. |                                       |
| 36       | AS13     | SQUARE NUT                             | 1.475 X 1.475 X .180                      | STEEL            | VARIES                 |                                       |
| 37       | AS16     | FASTENER                               | #14 X 1" HHSTS                            | STEEL            | VARIES                 | TYP. SPLINE SCREW                     |
| 38       | AS19     | FASTENER                               | #12 x 1" HWH SELF DRILL                   | STEEL            | VARIES                 |                                       |
| 39       | AS25     | FASTENER                               | #12 x 3/4" HWH SELF DRILL                 | STEEL            | VARIES                 |                                       |
| 40       | AS37     | FASTENER                               | #12 X 2" HWH SELF DRILL                   | STEEL            | VARIES                 |                                       |
| 41       | FASTENER | PERIMETER ANCHOR TO STEEL SUBSTRATE    | 1/2"-13 X 2" BOLT WITH WASHER AND NUT     | STEEL            | VARIES                 |                                       |
| 42       | FASTENER | PERIMETER ANCHOR TO STEEL SUBSTRATE    | 1/2"-13 X 4-1/2" BOLT WITH WASHER AND NUT | STEEL            | VARIES                 |                                       |
| 43       | FASTENER | PERIMETER ANCHOR TO CONCRETE SUBSTRATE | 1/2"X3-1/2" MIN. EMBED WEDGE ANCHOR / LDT | STEEL            | VARIES                 |                                       |
| 44       | FASTENER | PERIMETER ANCHOR TO STEEL SUBSTRATE    | #12 X 1-1/2" PFH SELF DRILL               | STEEL            | VARIES                 |                                       |
| 45       | FASTENER | STEEL REINFORCEMENT ATTACHMENT         | 1/4-20 X 2" BOLT WITH WASHER AND NUT      | STEEL            | VARIES                 |                                       |
| 46       | FASTENER | THROUGH BOLT                           | 1/4-20 X 3" BOLT WITH WASHER AND NUT      | STEEL            | VARIES                 | USED @ HORIZONTALS                    |
| 47       | NOT USED |  |   |                  |                        |                                       |
| 48       | PW158    | CORNER FACE COVER                      | 3.752 X .500 X .062                       | 6063-T6 ALUM     | CORAL INDUSTRIES, INC. |                                       |
| 49       | PW154    | CORNER PRESSURE BAR                    | 3.637 X 3.637 X .125                      | 6063-T6 ALUM     | CORAL INDUSTRIES, INC. |                                       |

## GLAZING SCHEDULE

| GLASS MARK | GLASS DESCRIPTION   | MANUFACTURER           | MAXIMUM D.L.O. SIZE (INCHES) | SQUARE FEET | MAXIMUM DESIGN PRESSURE (PSF) |
|------------|---|------------------------|------------------------------|-------------|-------------------------------|
| A          | 9/16" OVERALL THICKNESS LAMINATED GLASS CONSISTING OF TWO 1/4" H.S. GLASS AND A 0.075 VENCEVA INTERLAYER            | SOLUTIA                | 57-1/2" X 96"                | 38.3        | ± 80                          |
| B          | 9/16" OVERALL THICKNESS LAMINATED GLASS CONSISTING OF TWO 1/4" H.S. GLASS AND A 0.090 SOLUTIA SAFLEX PVB INTERLAYER | SOLUTIA                | 45-1/2" X 96"                | 30.3        | ± 65                          |
| U          | 9/16" OVERALL THICKNESS LAMINATED GLASS CONSISTING OF TWO 1/4" H.S. GLASS AND A 0.120 UVEKOL TYPE "S" INTERLAYER    | CORAL INDUSTRIES, INC. | 45-1/2" X 96"                | 30.3        | ± 65                          |

**BROADWAY ENGINEERING**  
 1335 West Cass Street  
 Tampa, Florida 33606

Elizabeth A. Broadway, P.E.  
 Professional Engineer  
 FL Registration No. 38558

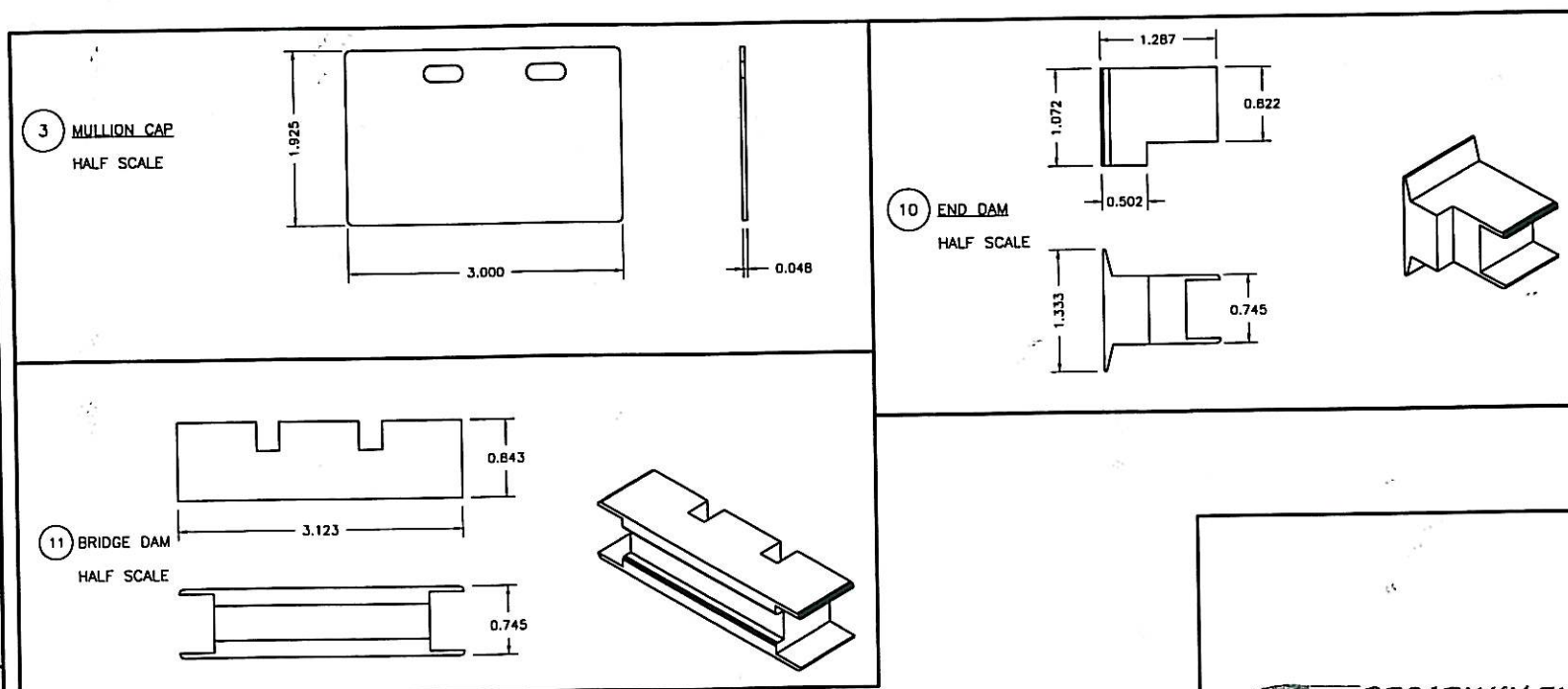
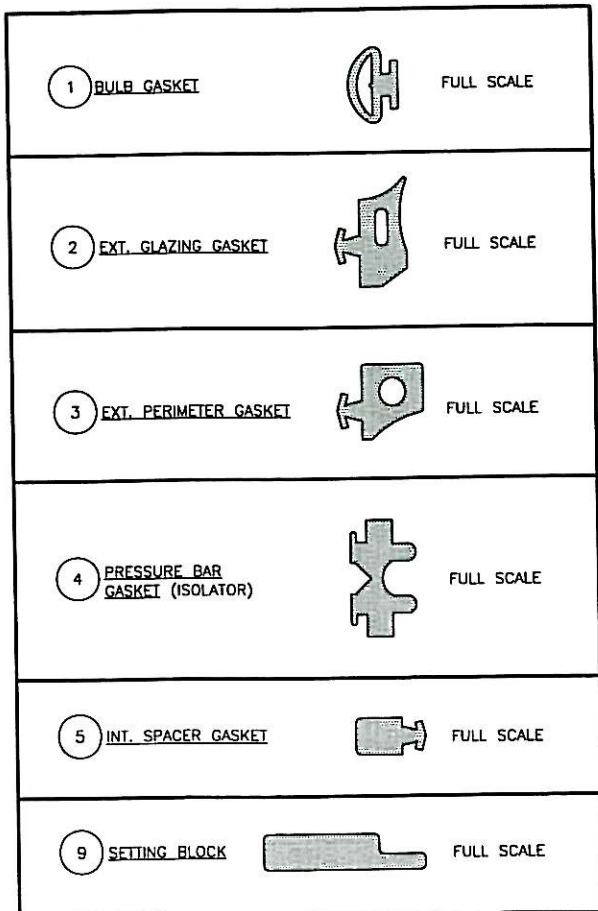
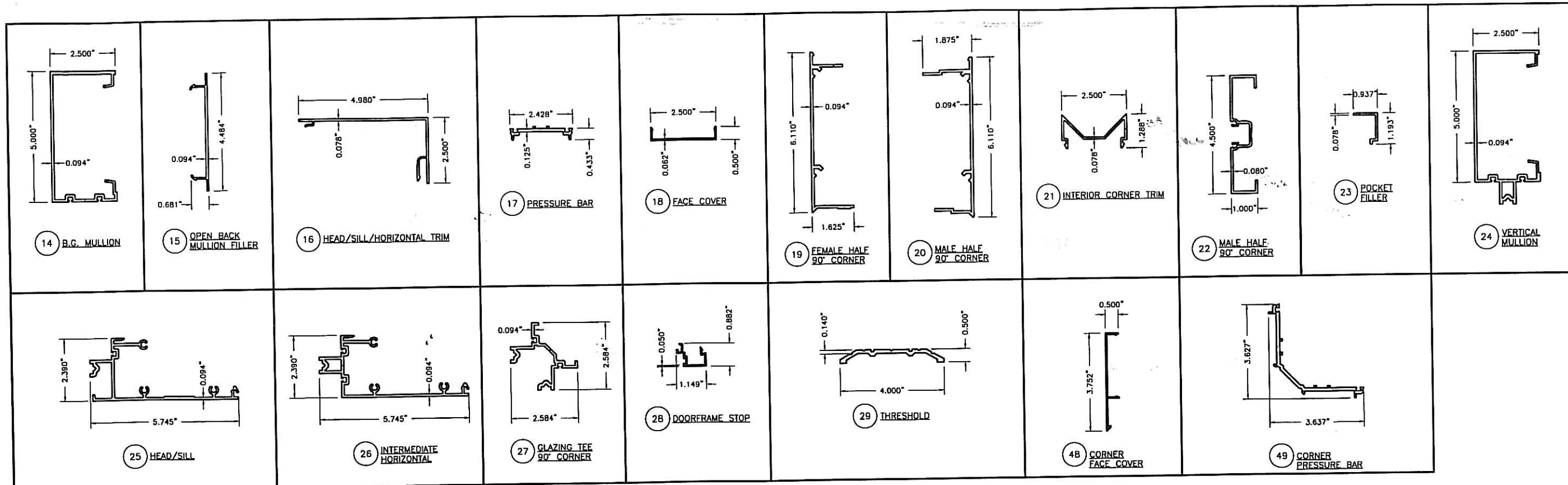
DRAWINGS FOR  
 FLORIDA  
 PRODUCT APPROVAL

| REV | BY | DATE | DESCRIPTION |
|-----|----|------|-------------|
|     |    |      |             |
|     |    |      |             |
|     |    |      |             |

**Coral**  
 Architectural Products  
 3010 RICE MIKE ROAD, TUSCALOOSA, AL 35406  
 PHONE 800-772-7737    FAX 800-443-6261

TEST REPORT DRAWINGS  
 PW256 IMPACT-RESISTANT  
 CURTAIN WALL SYSTEM  
 BILL OF MATERIALS AND GLAZING  
 SCHEDULE

|                         |                |                 |
|-------------------------|----------------|-----------------|
| DATE<br>8/17/2009       |                |                 |
| DRAWN<br>MLL            | CHECKED<br>DCW | APPROVED<br>DCW |
| PROJECT NO.             |                |                 |
| DRAWING NO.<br>PW256_03 |                |                 |
| SHEET<br>11 OF 12       |                |                 |



**BROADWAY ENGINEERING**  
1335 West Cass Street  
Tampa, Florida 33606

*Elizabeth A. Broadway*  
Elizabeth A. Broadway, P.E.  
Professional Engineer  
FL Registration No. 38558

8/17/09

DRAWINGS FOR  
FLORIDA  
PRODUCT APPROVAL

| REV | BY | DATE | DESCRIPTION |
|-----|----|------|-------------|
|     |    |      |             |
|     |    |      |             |
|     |    |      |             |
|     |    |      |             |

**Coral**  
Architectural Products  
3010 RICE MIAMI ROAD, TUSCALOOSA, AL 35406  
PHONE: 800-772-7737 FAC: 800-443-6261

TEST REPORT DRAWINGS  
PW256 IMPACT-RESISTANT  
CURTAIN WALL SYSTEM

DIE DRAWINGS

|             |           |          |
|-------------|-----------|----------|
| DATE        | 8/17/2009 |          |
| DRAWN       | CHECKED   | APPROVED |
| MLL         | DCW       | DCW      |
| PROJECT NO. |           |          |
| DRAWING NO. |           |          |
| PW256_03    |           |          |
| SHEET       |           |          |
| 12 OF 12    |           |          |