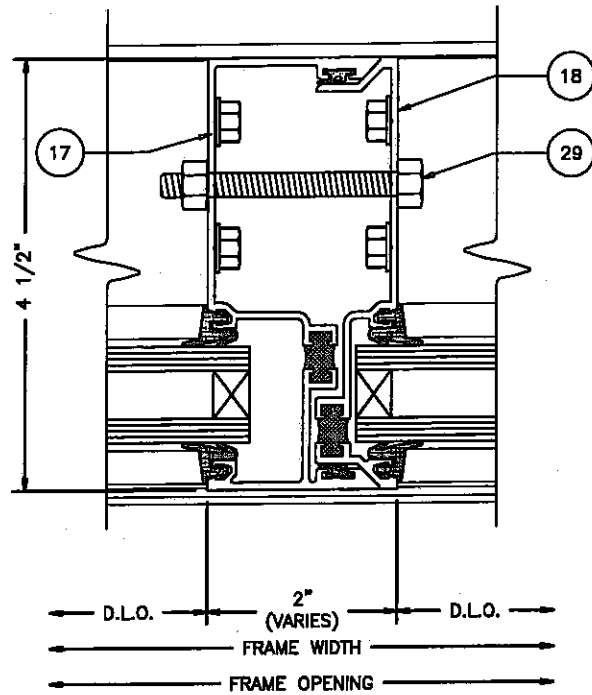
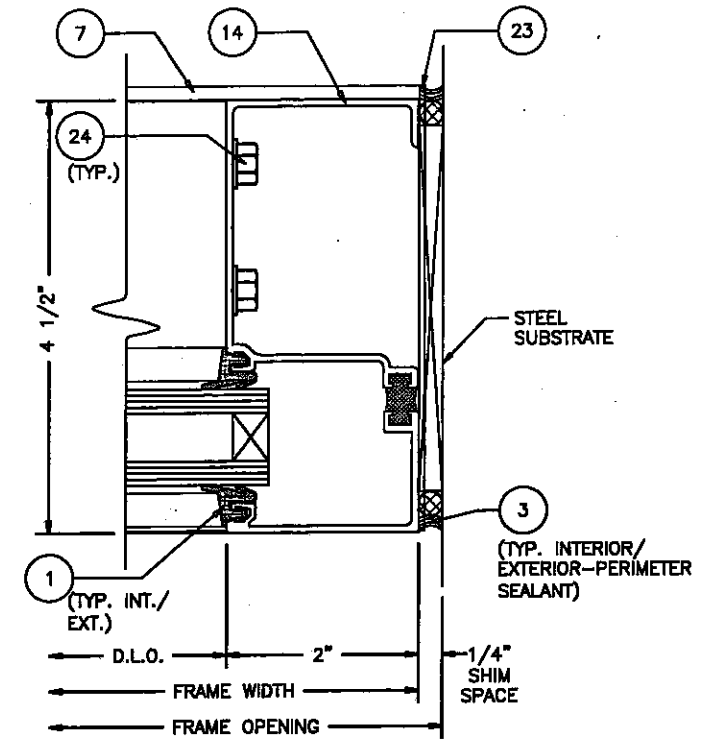


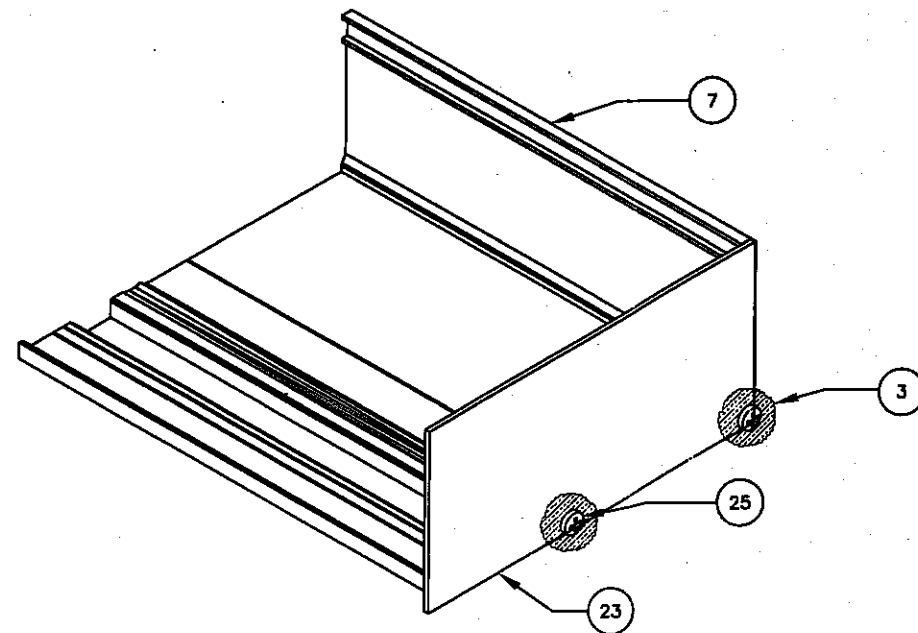
7 - LIGHT VERTICAL MULLION WITH STEEL
1:2



8 - EXPANSION MULLION
1:2




9 - JAMB
1:2



TYPICAL END DAM AT FLASHING
1:2

Coral
Architectural Products
3010 RICE MINE ROAD, TUSCALOOSA, AL 35408
PHONE: 800-772-7737 FAX: 800-255-7520

HTL TEST REPORT DRAWINGS FOR
FS400T FRAMING SYSTEM
FRAMING DETAILS

Hurricane Test Laboratory

 Tested unless
 Otherwise Noted
 Date 9/12/07
 Job # G-402-0702-07

DATE	7/11/2007	
DRAWN	CHECKED	APPROVED
PCH	JDW	JDW
PROJECT NO.	HTL TEST	
DRAWING NO.	FS400T_01	
SHEET	5 OF 6	

BILL OF MATERIALS

ITEM NO.	PART #	DESCRIPTION	DIMENSIONS	MATERIAL	MANUFACTURER	NOTES
1	NG1	GLAZING GASKET EXTERIOR/INTERIOR	0.197 SPACE	EPDM	VARIES	EXTERIOR/INTERIOR @ GLASS
2	SM5601	JOINT SEALANT TAPE	1/8" X 1/2" VARIES	BUTYL	SCHNEE-MOREHEAD	USED AT HORIZ. TO VERT. JOINT INTERSECTIONS
3	795	SEALANT	FILL SPACE	SILICONE	DOW	PERIMETER SEALANT
4	995	SEALANT	FILL SPACE	SILICONE	DOW	INTERNAL SEALANT
5	SB3	SETTING BLOCK AT INTERM. HORIZ/SILL	0.625 X 4.000 X 1.500	EPDM	VARIES	4" LONG
6	SB12	SETTING BLOCK AT INT. GLAZ. HORIZ.	0.125 X 1.062 X 4.000	EPDM	VARIES	4" LONG
7	FL339T	SUBSILL FLASHING	2.312 X 4.788 X 0.078	6063-T6 ALUMINUM	CORAL	
8	FS401T	HEAD - INTERIOR GLAZING	2.000 X 4.460 X 0.070	6063-T6 ALUMINUM	CORAL	
9	FS402T	SILL - INTERIOR GLAZING	2.000 X 4.460 X 0.070	6063-T6 ALUMINUM	CORAL	
10	FS403	GLASS STOP - INTERIOR GLAZING	1.135 X 2.792 X 0.057	6063-T6 ALUMINUM	CORAL	
11	FS404T	VERTICAL MULLION	2.000 X 4.500 X 0.070	6063-T6 ALUMINUM	CORAL	
12	FS405	FILLER	0.265 X 2.504 X 0.070	6063-T6 ALUMINUM	CORAL	
13	FS406T	INT. HORIZ. MULL - INTERIOR GLAZING	2.000 X 4.460 X 0.080	6063-T6 ALUMINUM	CORAL	
14	FS407T	WALL JAMB	2.000 X 4.500 X 0.070	6063-T6 ALUMINUM	CORAL	
15	FS408T	INT. HORIZ MULL - EXTERIOR GLAZING	2.000 X 4.480 X 0.080	6063-T6 ALUMINUM	CORAL	
16	FS409T	SILL - EXTERIOR GLAZING	2.000 X 4.460 X 0.080	6063-T6 ALUMINUM	CORAL	
17	FS410T	EXPANSION MULL - MALE HALF	0.870 X 4.500 X 0.070	6063-T6 ALUMINUM	CORAL	
18	FS411T	EXPANSION MULL - FEMALE HALF	1.813 X 4.500 X 0.070	6063-T6 ALUMINUM	CORAL	
19	WD300-1	WATER DEFLECTOR	1.358 X 1.500 X 0.040	INJECTION MOLDED PLASTIC	CORAL	LOCATE ONE AT EACH END OF EACH ITEM #13 & #15
20	CS104T	FLAT FILLER	0.265 X 3.750 X 0.700	6036-T6 ALUMINUM	CORAL	
21	CS300T-1	ANCHOR CLIP	1.295 X 3.73 X 0.094	6063-T6 ALUMINUM	CORAL	4" LONG
22	CS403	GLASS STOP	0.582 X 1.152 X 0.070	6063-T6 ALUMINUM	CORAL	
23	ED339-1	END DAM	3.313 X 4.813 X 0.063	RIGID PVC	CORAL	
24	AS16	SPLINE ASSEMBLY SCREW	#14 X 1" HHSTS	STEEL	VARIES	TYPICAL SPLINE SCREW
25	AS31	ASSEMBLY SCREW	#6 X 1/4" PPH	STEEL	VARIES	
26	FASTENER	FOR ATTACHING FRAME TO STEEL SUBSTRATE	1/4" X 1 1/4" TEK	STEEL	VARIES	
27	FASTENER	STEEL REINFORCEMENT ATTACHMENT BOLT	1/4"-20 X 1" BOLT W/WASHER AND NUT	STEEL	VARIES	LOCATE AT HEAD & SILL
28	SR404	STEEL REINFORCEMENT	10 GAUGE	GALVANIZED STEEL	VARIES	FITS IN ITEM #11
29	FASTENER	STEEL REINFORCEMENT ATTACHMENT BOLT	1/4"-20 X 2-1/2" BOLT W/WASHER AND NUT	STEEL	VARIES	LOCATE AT CENTER OF INTERM. HONTALORIZ

GLAZING SCHEDULE				
GLASS MARK SYMBOL	GLASS TYPE	MANUFACTURER	MAXIMUM D.L.O. SIZE	MAXIMUM SQUARE FEET
A	1/4" TEMPERED OUTER SURFACE, 1/2" AIR SPACE, 1/4" TEMPERED INNER SURFACE	VARIES	46" x 48"	15.3

Hurricane Test Laboratory



Tested unless
Otherwise Noted

Date 9/12/07
Job # 642-0702-07

DATE	7/11/2007	
DRAWN	CHECKED	APPROVED
PCH	JDW	JDW
PROJECT NO.	HTL TEST	
DRAWING NO.	FS400T_01	
SHEET	6 OF 6	

HTL TEST REPORT DRAWINGS FOR FS400T FRAMING SYSTEM

BILL OF MATERIALS

Coral

Architectural Products
3010 RICE MINE ROAD, TUSCALOOSA, AL 35406
PHONE: 800-772-7737 FAX: 800-255-7520

DESCRIPTION

DATE

BY

REV