

PRODUCT APPROVAL DRAWINGS FOR FL550T LARGE MISSILE DRY GLAZE SYSTEM

GENERAL NOTES:
TEST STANDARDS
TAS201, TAS202, TAS203
WATER INFILTRATION 15 PSF
AIR INFILTRATION 6.24 PSF
TYPICAL GLASS BITE 9/16" UNLESS OTHERWISE NOTED
1/4" MINIMUM SHIM SPACE @ PERIMETER UNLESS OTHERWISE NOTED
THIS PRODUCT HAS BEEN DESIGNED AND TESTED TO COMPLY WITH
FLORIDA BUILDING CODE 2010 EDITION FOR HVHZ
MATERIALS THAT COME IN CONTACT WITH OTHER DISSIMILAR MATERIALS
SHALL MEET REQUIREMENTS OF 2010 FLORIDA BUILDING CODE
SECTION 2003.8.4

SERIES 281 & 381 DOORS SHOWN ON DRAWINGS ARE UNDER
SEPARATE APPROVAL NUMBER. PREVAILING PRESSURE OF DOOR WILL
PREVAIL WHEN USED IN THIS SYSTEM

INDEX TO DRAWINGS	
1	INDEX TO DRAWINGS AND NOTES
2	DOOR FRAMING ELEVATION WITH HEAVY MULLION
3	FRAMING DETAILS
4	FRAMING DETAILS
5	FRAMING DETAILS
6	FRAMING DETAILS
7	BILL OF MATERIALS
8	DIE DRAWINGS
9	SUBSILL ANCHORING
10	CONCRETE SUBSTRATE ANCHOR LOCATIONS
11	HOT ROLLED STEEL SUBSTRATE ANCHOR LOCATIONS
12	LIGHT GAUGE STEEL SUBSTRATE ANCHOR LOCATIONS
13	WOOD SUBSTRATE ANCHOR LOCATIONS

ABBREVIATIONS:
DIA. = DIAMETER
D.L.O. = DAY LIGHT OPENING
EXT. = EXTERIOR
ELEVS. = ELEVATIONS
INT. = INTERIOR
MAX. = MAXIMUM
MIN. = MINIMUM
O.C. = ON CENTER
OPP. = OPPOSITE
TYP. = TYPICAL

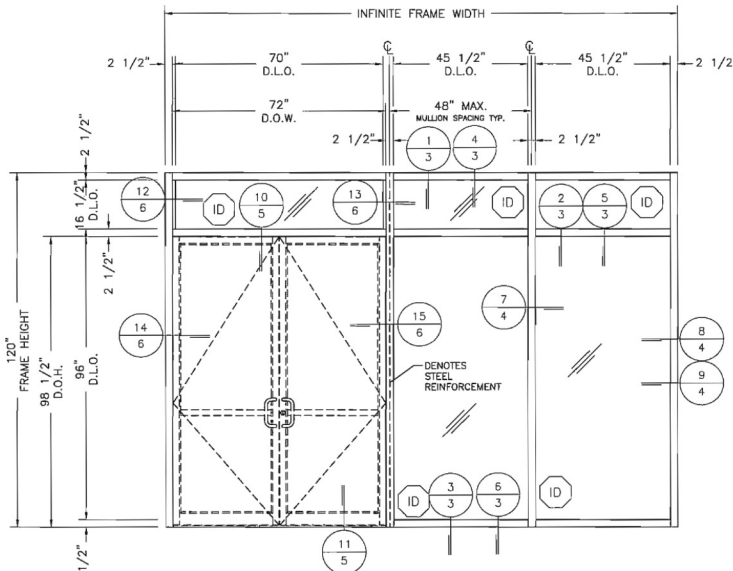


B BROADWAY ENGINEERING, P.A.
CIVIL, MECHANICAL, STRUCTURAL AND BUILDING DESIGN
See Us At www.Broadway-Eng.Com
1335 W. Cass Street
Tampa, Florida 33606 813-251-9244
Fax 813-251-9330 Bus. Email: info@broadway-eng.com
Cadd. Email: Doc@broadway-eng.com
BE-4177 Certificate of Authorization No. 4599

Coral
Architectural Products
3015 BRICE MANE ROAD, TUSCALOOSA, AL 35406
PHONE 800-773-7373 FAX 800-255-7320

PRODUCT APPROVAL FOR FL550T
LARGE MISSILE DRY GLAZE SYSTEM
INDEX TO DRAWINGS AND NOTES

DATE	11/22/13
DRAWN	DES
CHECKED	WSS
APPROVED	EAB
PROJECT NO.	
DRAWING NO.	FL550T_02
SHEET	1 OF 13



**TYPICAL STANDARD MULLION
LARGE MISSILE**

NOTES:
DESIGN PRESSURE = +55/-55 PSF
NS281 AND MS381 UNDER SEPARATE
APPROVAL DRY GLAZE SYSTEMS ARE
APPROVED WITH DUPONT SENTRY
GLAS® INTERLAYERS ONLY.

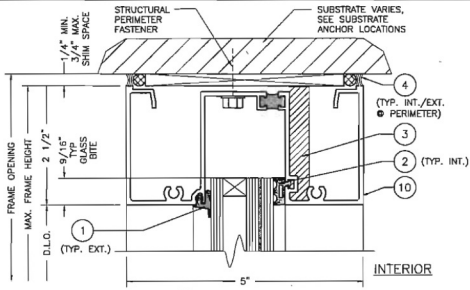


B BROADWAY ENGINEERING, P.A.
CIVIL, MECHANICAL, STRUCTURAL AND BUILDING DESIGN
See Us At www.Broadway-Eng.Com
1335 W. Cass Street
Tampa, Florida 33606 813-251-9244
Fax 813-251-9330 Bus. Email: info@broadway-eng.com
Cadd. Email: Doc@broadway-eng.com
BE-4177 Certificate of Authorization No. 4599

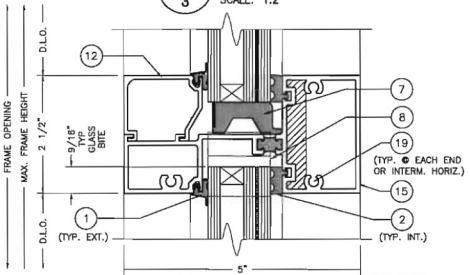
Coral
Architectural Products
3015 BRICE MANE ROAD, TUSCALOOSA, AL 35406
PHONE 800-773-7373 FAX 800-255-7320

PRODUCT APPROVAL FOR FL550T
LARGE MISSILE DRY GLAZE SYSTEM
DOOR FRAMING
STANDARD MULLION

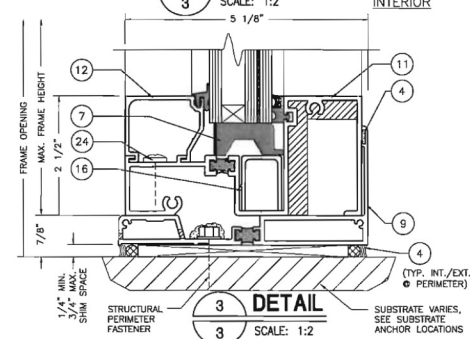
DATE	11/22/13
DRAWN	DES
CHECKED	WSS
APPROVED	EAB
PROJECT NO.	
DRAWING NO.	FL550T_02
SHEET	2 OF 13



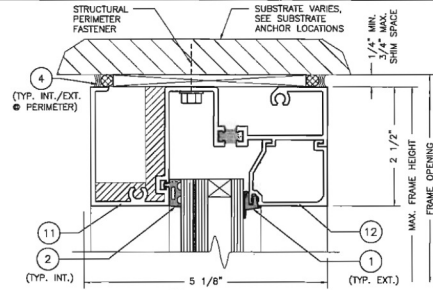
1 DETAIL
SCALE: 1:2



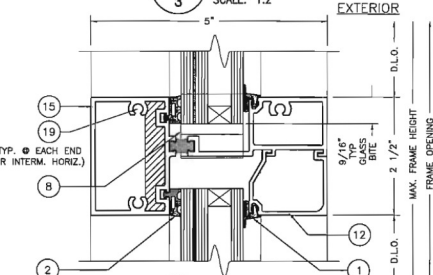
2 DETAIL
SCALE: 1:2



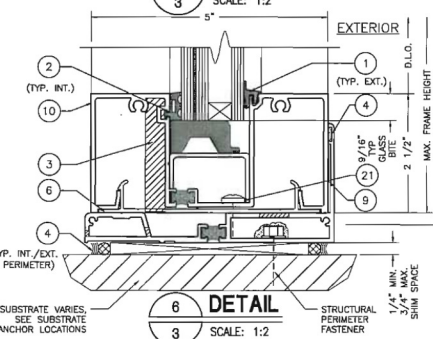
3 DETAIL
SCALE: 1:2



4 DETAIL
SCALE: 1:2



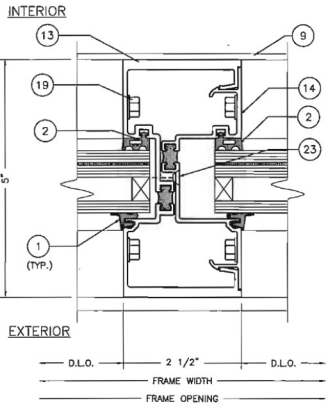
5 DETAIL
SCALE: 1:2



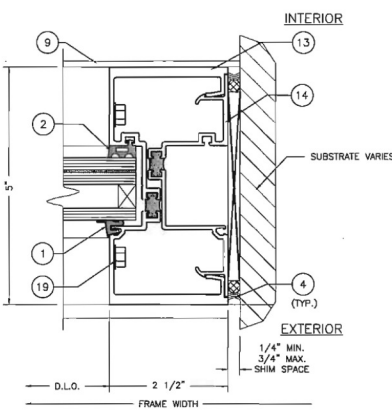
6 DETAIL
SCALE: 1:2

NOTE:
SEE FL539T SUBSILL ANCHOR PAGE
FOR ANCHOR LOCATIONS, TYPES
AND WEEP HOLE LOCATIONS.

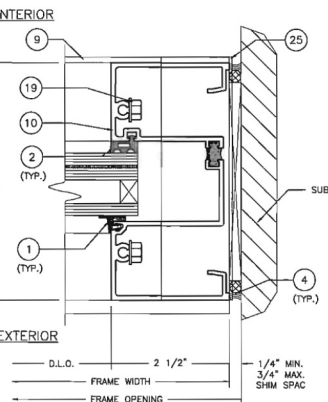
BROADWAY ENGINEERING, P.A.
 CIVIL, MECHANICAL, STRUCTURAL AND BUILDING DESIGN
 See Us At www.Broadway-Eng.Com
1335 W. Cass Street
Tampa, Florida 33606 813-251-9244
 Fax 813-251-9330 Bus. Email: Info@Broadway-Eng.Com
 Cad. Email: DCad@Broadway-Eng.Com
BE-4177 Certificate of Authorization No. 4599



7 DETAIL
SCALE: 1:2



9 DETAIL
SCALE: 1:2



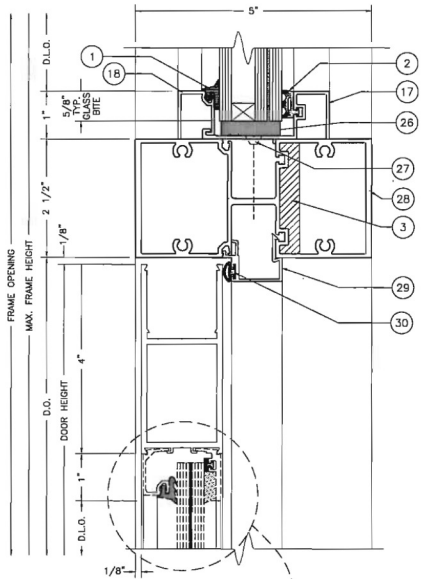
8 DETAIL
SCALE: 1:2

BROADWAY ENGINEERING, P.A.
 CIVIL, MECHANICAL, STRUCTURAL AND BUILDING DESIGN
 See Us At www.Broadway-Eng.Com
1335 W. Cass Street
Tampa, Florida 33606 813-251-9244
 Fax 813-251-9330 Bus. Email: Info@Broadway-Eng.Com
 Cad. Email: DCad@Broadway-Eng.Com
BE-4177 Certificate of Authorization No. 4599

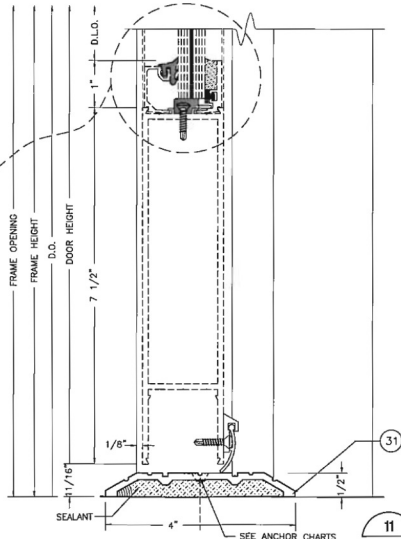
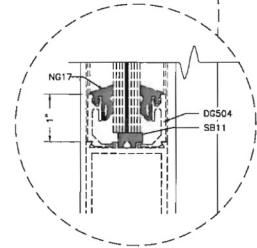
BROADWAY ENGINEERING, P.A.
 CIVIL, MECHANICAL, STRUCTURAL AND BUILDING DESIGN
 See Us At www.Broadway-Eng.Com
1335 W. Cass Street
Tampa, Florida 33606 813-251-9244
 Fax 813-251-9330 Bus. Email: Info@Broadway-Eng.Com
 Cad. Email: DCad@Broadway-Eng.Com
BE-4177 Certificate of Authorization No. 4599

<p style="text-align: center;">Coral</p> <p style="text-align: center;">Architectural Products 3010 RICE LAKE ROAD, TUSCALOOSA, AL 35696 PHONE 800-772-7377 FAX 800-255-7320</p>	<p style="text-align: center;">FRAMING DETAILS</p> <p style="text-align: center;">PRODUCT APPROVAL FOR FL550T LARGE MISSILE DRY GLAZE SYSTEM</p>														
<table border="1" style="width: 100%; border-collapse: collapse;"> <tr> <td>DATE</td> <td>11/22/13</td> </tr> <tr> <td>DRAWN</td> <td>DEF</td> </tr> <tr> <td>CHECKED</td> <td>WSS</td> </tr> <tr> <td>APPROVED</td> <td>EAH</td> </tr> <tr> <td>PROJECT NO.</td> <td></td> </tr> <tr> <td>DRAWING NO.</td> <td>FL550T_02</td> </tr> <tr> <td>SHEET</td> <td>3 OF 13</td> </tr> </table>		DATE	11/22/13	DRAWN	DEF	CHECKED	WSS	APPROVED	EAH	PROJECT NO.		DRAWING NO.	FL550T_02	SHEET	3 OF 13
DATE	11/22/13														
DRAWN	DEF														
CHECKED	WSS														
APPROVED	EAH														
PROJECT NO.															
DRAWING NO.	FL550T_02														
SHEET	3 OF 13														

<p style="text-align: center;">Coral</p> <p style="text-align: center;">Architectural Products 3010 RICE LAKE ROAD, TUSCALOOSA, AL 35696 PHONE 800-772-7377 FAX 800-255-7320</p>	<p style="text-align: center;">FRAMING DETAILS</p> <p style="text-align: center;">PRODUCT APPROVAL FOR FL550T LARGE MISSILE DRY GLAZE SYSTEM</p>														
<table border="1" style="width: 100%; border-collapse: collapse;"> <tr> <td>DATE</td> <td>11/22/13</td> </tr> <tr> <td>DRAWN</td> <td>DEF</td> </tr> <tr> <td>CHECKED</td> <td>WSS</td> </tr> <tr> <td>APPROVED</td> <td>EAH</td> </tr> <tr> <td>PROJECT NO.</td> <td></td> </tr> <tr> <td>DRAWING NO.</td> <td>FL550T_02</td> </tr> <tr> <td>SHEET</td> <td>4 OF 13</td> </tr> </table>		DATE	11/22/13	DRAWN	DEF	CHECKED	WSS	APPROVED	EAH	PROJECT NO.		DRAWING NO.	FL550T_02	SHEET	4 OF 13
DATE	11/22/13														
DRAWN	DEF														
CHECKED	WSS														
APPROVED	EAH														
PROJECT NO.															
DRAWING NO.	FL550T_02														
SHEET	4 OF 13														



10 DETAIL
5 SCALE: 1:2

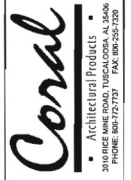


11 DETAIL
5 SCALE: 1:2

ELIZABETH A. BROADWAY
LICENSE
No. E-38558

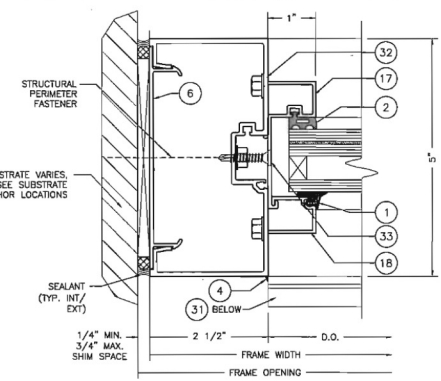
ELIZABETH A. BROADWAY
PROFESSIONAL ENGINEER
FLORIDA REGISTRATION NO. 38558

B BROADWAY ENGINEERING, P.A.
CIVIL, MECHANICAL, STRUCTURAL AND BUILDING DESIGN
See Us At www.Broadway-Eng.Com
1335 W. Cass Street
Tampa, Florida 33606 813-251-9244
Fax 813-251-9330 Bus. Email: Info@Broadway-Eng.Com
BE-4177 Certificate of Authorization No. 4599

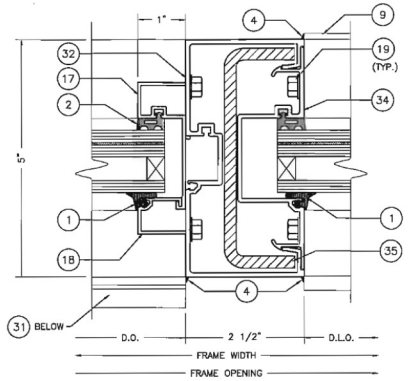


PRODUCT APPROVAL FOR FL550T
LARGE MISSILE DRY GLAZE SYSTEM
FRAMING DETAILS

DATE	11/22/13
DRAWN	DESIGNED
CHECKED	WSS
APPROVED	EAB
PROJECT NO.	
DRAWING NO.	FL550T_02
SHEET	5 OF 13

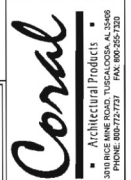


12 DETAIL
6 SCALE: 1:2



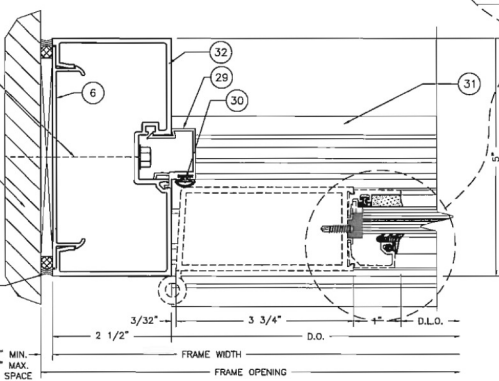
13 DETAIL
6 SCALE: 1:2

B BROADWAY ENGINEERING, P.A.
CIVIL, MECHANICAL, STRUCTURAL AND BUILDING DESIGN
See Us At www.Broadway-Eng.Com
1335 W. Cass Street
Tampa, Florida 33606 813-251-9244
Fax 813-251-9330 Bus. Email: Info@Broadway-Eng.Com
BE-4177 Certificate of Authorization No. 4599

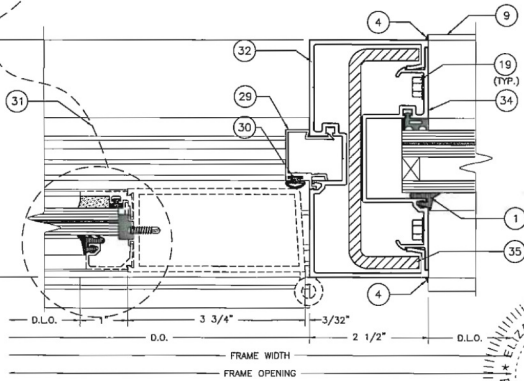


PRODUCT APPROVAL FOR FL550T
LARGE MISSILE DRY GLAZE SYSTEM
FRAMING DETAILS

DATE	11/22/13
DRAWN	DESIGNED
CHECKED	WSS
APPROVED	EAB
PROJECT NO.	
DRAWING NO.	FL550T_02
SHEET	6 OF 13



14 DETAIL
6 SCALE: 1:2



15 DETAIL
6 SCALE: 1:2

ELIZABETH A. BROADWAY
LICENSE
No. E-38558

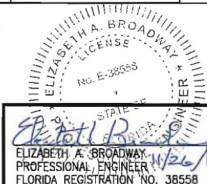
ELIZABETH A. BROADWAY
PROFESSIONAL ENGINEER
FLORIDA REGISTRATION NO. 38558

BILL OF MATERIALS

ITEM NO.	P/N	DESCRIPTION	DIMENSIONS	MATERIAL	MANUFACTURER	NOTES
1	NG1	EXTERIOR GLAZING GASKET	0.120 SPACE	EPDM	VARIES	
2	NG15	INTERIOR SPACER GASKET	0.250 SPACE	EPDM	VARIES	
3	SM5601	JOINT SEALANT TAPE	0.500 X 0.125 X VARIES	BUTYL	SCHNEE-MOOREHEAD	
4	795	SILICONE - PERIMETER SEALANT	FILL SPACE	SILICONE	DOW CORNING	USED @ PERIMETER
5	995	SILICONE - GLASS TO METAL	FILL SPACE	SILICONE	DOW CORNING	GLASS TO METAL AND INTERNAL
6	FL515	FLAT FILLER	0.681 X 4.658 X 0.070	6063-T6 ALUMINUM	CORAL INDUSTRIES, INC.	
7	SB15	SETTING BLOCK @ SILL & HORIZONTAL	0.687 X 1.468 X 4.000	EPDM	VARIES	2 PER LITE
8	WD300-1	WATER DIVERTER	1.358 X 1.344 X 4.000	INJECTION MOLDED PLASTIC	CORAL INDUSTRIES, INC.	@ EACH END OF HORIZONTAL
9	FL539T	SUBSILL	2.620 X 5.402 X 0.084	6063-T6 ALUMINUM	CORAL INDUSTRIES, INC.	
10	FL571T	HEAD OR WALL JAMB	2.500 X 5.000 X 0.094	6063-T6 ALUMINUM	CORAL INDUSTRIES, INC.	
11	FL572T	SILL OR HEAD	2.500 X 4.980 X 0.094	6063-T6 ALUMINUM	CORAL INDUSTRIES, INC.	
12	FL553	GLASS STOP	1.250 X 1.646 X 0.078	6063-T6 ALUMINUM	CORAL INDUSTRIES, INC.	
13	FL574T	STD. VERTICAL MULLION	2.500 X 5.000 X 0.094	6063-T6 ALUMINUM	CORAL INDUSTRIES, INC.	
14	FL575T	OPEN BACK MULLION FILLER	0.681 X 4.670 X 0.080	6063-T6 ALUMINUM	CORAL INDUSTRIES, INC.	
15	FL576T	HORIZONTAL MULLION	2.500 X 4.980 X 0.094	6063-T6 ALUMINUM	CORAL INDUSTRIES, INC.	
16	CS500-1	SETTING CHAIR	1.218 X 1.544 X 0.062	6063-T6 ALUMINUM	CORAL INDUSTRIES, INC.	
17	FL467	TRANSOM SASH	2.669 X 1.000 X 0.062	6063-T6 ALUMINUM	CORAL INDUSTRIES, INC.	
18	FL518	TRANSOM GLASS STOP	1.000 X 0.767 X 0.062	6063-T6 ALUMINUM	CORAL INDUSTRIES, INC.	
19	AS16	FASTENER	#14 X 1" HHSTS	STEEL	VARIES	TYP. SPLINE SCREW VERTICAL/HORIZONTAL JOINTS
20	AS21	FASTENER	#6 X 1/4" PPH	STEEL	VARIES	ANCHOR (17) (ED519-1) TO (20) (FL539T)
21	AS57	FASTENER	#12 X 1/2" PHPSMS	S. STEEL	VARIES	ANCHOR (19) FL571T TO (21) FL539T INSIDE SET ONLY
22	ANCHOR	FASTENER	#14 X 2" HH TEK SCREW	ZINC PLATED	VARIES	ANCHOR MISC PARTS TO SUBSTRATES
23	AS29	FASTENER	#8 X 2" FHPUC	S. STEEL	VARIES	ANCHOR (23) FL575T TO (23) FL574T COUNTER SINK AND BREAK OFF
24	AS59	FASTENER	#14 X 1-1/2" PHPSMS	ZINC PLATED	VARIES	ANCHOR (24) FL572T TO (24) FL539T
25	ED519-1	SILL FLASHING END DAM	2.688 X 0.750 X 0.062	6063-T6 ALUMINUM	CORAL INDUSTRIES, INC.	
26	SB7	TRANSOM SETTING BLOCK	1.250 X 0.313 X 4.000	EPDM	VARIES	2 PER LITE
27	AS39	FASTENER	#10 X 1-3/4" FPH	STEEL	VARIES	
28	FL507	DOOR HEADER	2.500 X 5.000 X 0.094	6063-T6 ALUMINUM	CORAL INDUSTRIES, INC.	
29	DS501	DOOR STOP	1.008 X 1.258 X 0.050	6063-T6 ALUMINUM	CORAL INDUSTRIES, INC.	
30	NG5	DOOR STOP GASKET	0.070 SPACE	EPDM	VARIES	
31	TH4	THRESHOLD	4.000 X 0.500 X 0.140	6063-T6 ALUMINUM	CORAL INDUSTRIES, INC.	
32	FL504	DOOR JAMB	2.500 X 5.000 X 0.094	6063-T6 ALUMINUM	CORAL INDUSTRIES, INC.	
33	AS18	FASTENER	#10 X 1-1/4" FPH	STEEL	VARIES	
34	FL555	OPEN BACK MULLION FILLER	0.681 X 4.670 X 0.080	6063-T6 ALUMINUM	CORAL INDUSTRIES, INC.	
35	SR504	STEEL REINFORCEMENT	4.562 X 1.250 X 0.250	STEEL	VARIES	STEEL REINFORCEMENT FOR (35) (PRIMED RED OXIDE)

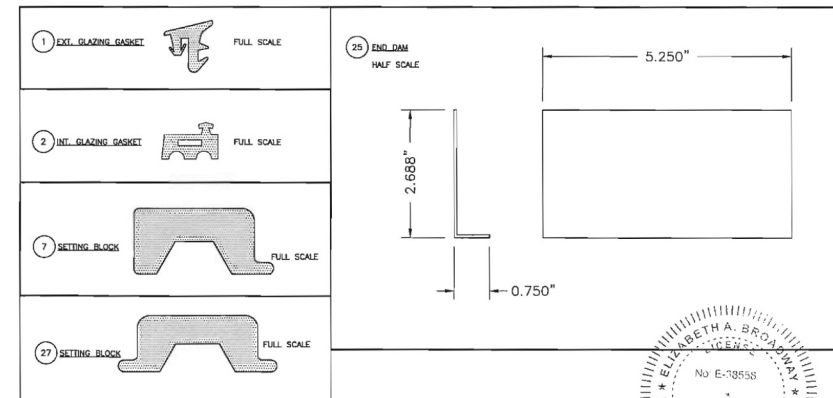
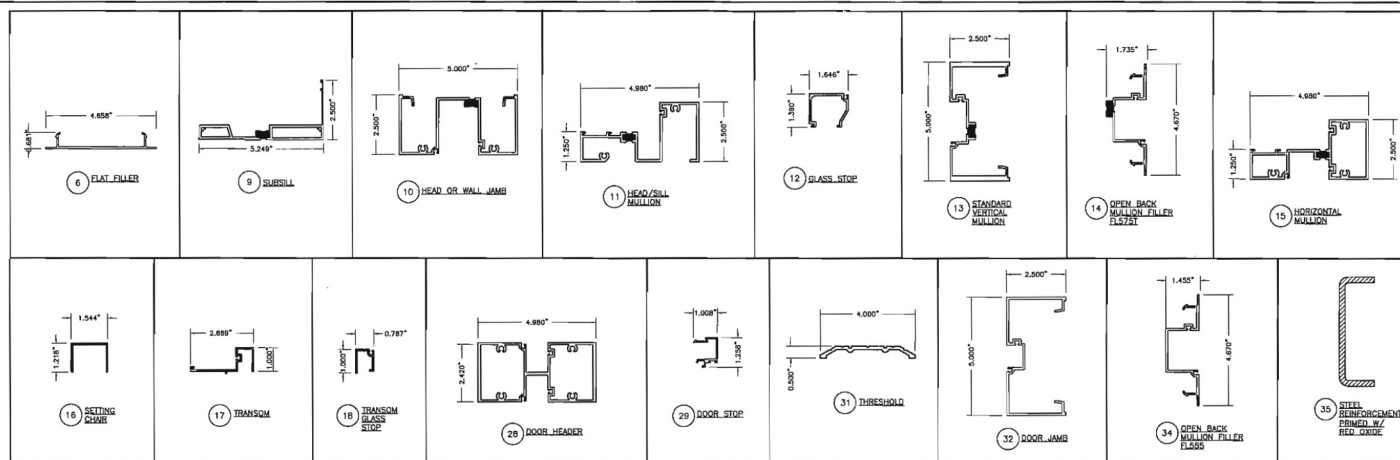
GLAZING SCHEDULE

GLASS DESCRIPTION	MANUFACTURER	GLASS MARK	MAXIMUM D.L.O. SIZE (INCHES)	SQUARE FEET	MAXIMUM DESIGN PRESSURE (PSF)
1-5/16" INSULATED -25T X 1/2" ALUMINUM BOX SPACER X .25T X .090 SENTRY GLAS* X .25T	DUPONT	ID	45-1/2" X 96"	30.33	+/-55
1-5/16" INSULATED -25T X 1/2" ALUMINUM BOX SPACER X .25T X .035 SENTRY GLAS* X .25T	DUPONT	IC	45-1/2" X 102-3/8"	32.35	+/-55

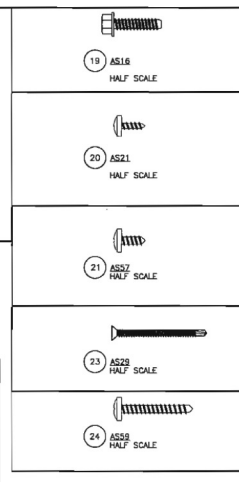


B BROADWAY ENGINEERING, P.A.
 CIVIL, MECHANICAL, STRUCTURAL AND BUILDING DESIGN
 See Us At www.Broadway-Eng.Com
1335 W. Cass Street
Tampa, Florida 33606 813-251-9244
 Fax 813-251-9330 Bus. Email: info@broadway-eng.com
 Code. Email: dgore@broadway-eng.com
 BE-4177 Certificate of Authorization No. 4599

DATE	11/22/13
DRAWN	DESIGNED
CHECKED	WSS
APPROVED	EAB
PROJECT NO.	
DRAWING NO.	FL550T_02
SHEET	7 OF 13



B BROADWAY ENGINEERING, P.A.
 CIVIL, MECHANICAL, STRUCTURAL AND BUILDING DESIGN
 See Us At www.Broadway-Eng.Com
1335 W. Cass Street
Tampa, Florida 33606 813-251-9244
 Fax 813-251-9330 Bus. Email: info@broadway-eng.com
 Code. Email: dgore@broadway-eng.com
 BE-4177 Certificate of Authorization No. 4599



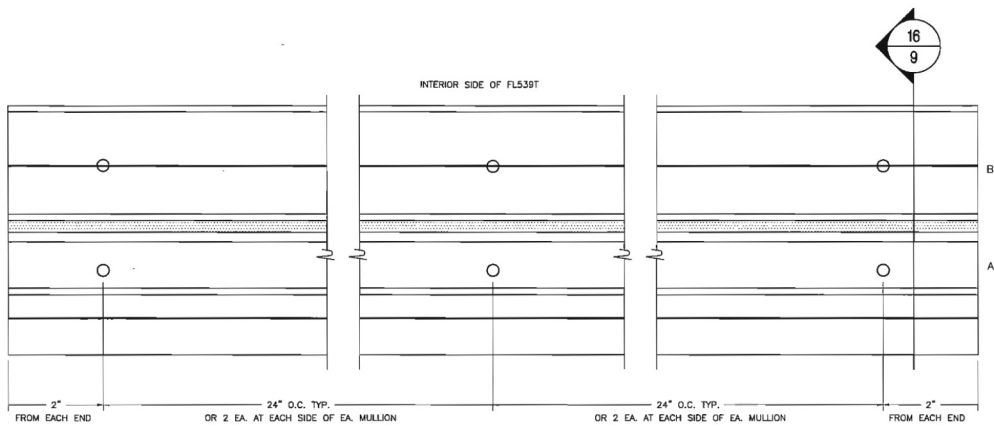
Coral
 Architectural Products
 3010 BLUE HAWK ROAD, TUSCALOOSA, AL 35696
 PHONE: 800-777-7373 FAX: 800-955-7320

PRODUCT APPROVAL FOR FL550T
 LARGE MISSILE DRY GLAZE SYSTEM

BILL OF MATERIALS AND GLAZING
 SCHEDULE

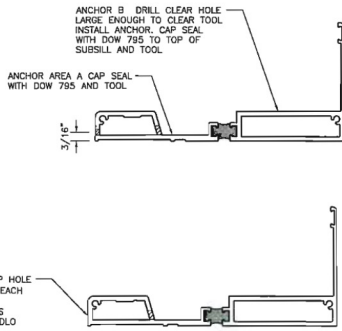
DIE DRAWINGS

DATE	11/22/13
DRAWN	DESIGNED
CHECKED	WSS
APPROVED	EAB
PROJECT NO.	
DRAWING NO.	FL550T_02
SHEET	8 OF 13



SUBSILL ANCHORING

SCALE: 1:2



SECTION
16
9
SCALE: 1:2

FL539 and FL539T Anchor types		
Substrate	Anchor Type	Length based on 1/2" Shim space
Wood	#14 Pan Head Wood Screw	2 1/2"
Concrete	3/8" LDT	2 1/2"
Concrete	1/4" Hex Head Tapcon	3"
18 GA Steel stud or 1/8" Hot Rolled	#14 Hex or Pan Head Tek or 1/4" Type F	2"
Steel hot rolled	#14 Hex or Pan Head Tek or 1/4" Type F	2"
Steel hot rolled	3/8" Bolt nut and washers	2"
Steel hot rolled	3/8" Type F or standard SAE and Tap	2"

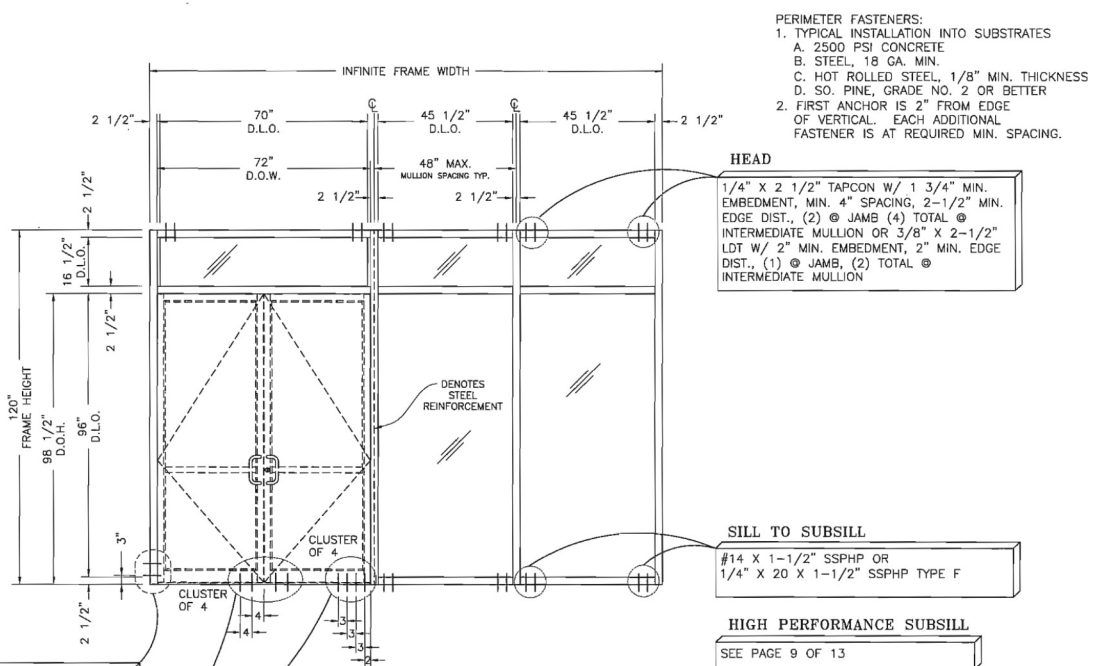
ELIZABETH A. BROADWAY
LICENSE
No. E-38558
STATE OF FLORIDA
ELIZABETH A. BROADWAY
PROFESSIONAL ENGINEER
FLORIDA REGISTRATION NO. 38558

BROADWAY ENGINEERING, P.A.
CIVIL, MECHANICAL, STRUCTURAL AND BUILDING DESIGN
See Us At www.Broadway-Eng.Com
1335 W. Cass Street
Tampa, Florida 33606 813-251-9244
Fax 813-251-9330 Bus. Email: Info@Broadway-Eng.Com
BE-4177 Certificate of Authorization No. 4599

DATE 11/22/13
DRAWN DEF CHECKED WSS APPROVED EAB
PROJECT NO.
DRAWING NO. FL550T_02
SHEET 9 OF 13

Coral
Architectural Products
3010 RICE LAKE ROAD, TUSCALOOSA, AL 35406
PHONE: 800-772-7727 FAX: 800-295-3720

PRODUCT APPROVAL FOR FL550T
LARGE MISSILE DRY GLAZE SYSTEM
FRAMING DETAILS



CONCRETE SUBSTRATE ANCHOR LOCATIONS

WALL JAMB
1/4" X 2 1/2" TAPCON W/ 1 3/4" MIN. EMBEDMENT, 2-1/2" MIN. EDGE DIST. OR 3/8" X 2-1/2" LDT W/ 2" MIN. EMBEDMENT, 2" MIN. EDGE DIST.

THRESHOLD
(4) EA. 1/4" X 2 1/2" TAPCON WITH 1 3/4" MIN. EMBEDMENT. LOCATIONS AS SHOWN, 2-1/2" MIN. EDGE DIST.

HEAD
1/4" X 2 1/2" TAPCON W/ 1 3/4" MIN. EMBEDMENT, MIN. 4" SPACING, 2-1/2" MIN. EDGE DIST., (2) @ JAMB (4) TOTAL @ INTERMEDIATE MULLION OR 3/8" X 2-1/2" LDT W/ 2" MIN. EMBEDMENT, 2" MIN. EDGE DIST., (1) @ JAMB, (2) TOTAL @ INTERMEDIATE MULLION

SILL TO SUBSILL
#14 X 1-1/2" SSPPH OR 1/4" X 20 X 1-1/2" SSPPH TYPE F

HIGH PERFORMANCE SUBSILL
SEE PAGE 9 OF 13

ELIZABETH A. BROADWAY
LICENSE
No. E-38558
STATE OF FLORIDA
ELIZABETH A. BROADWAY
PROFESSIONAL ENGINEER
FLORIDA REGISTRATION NO. 38558

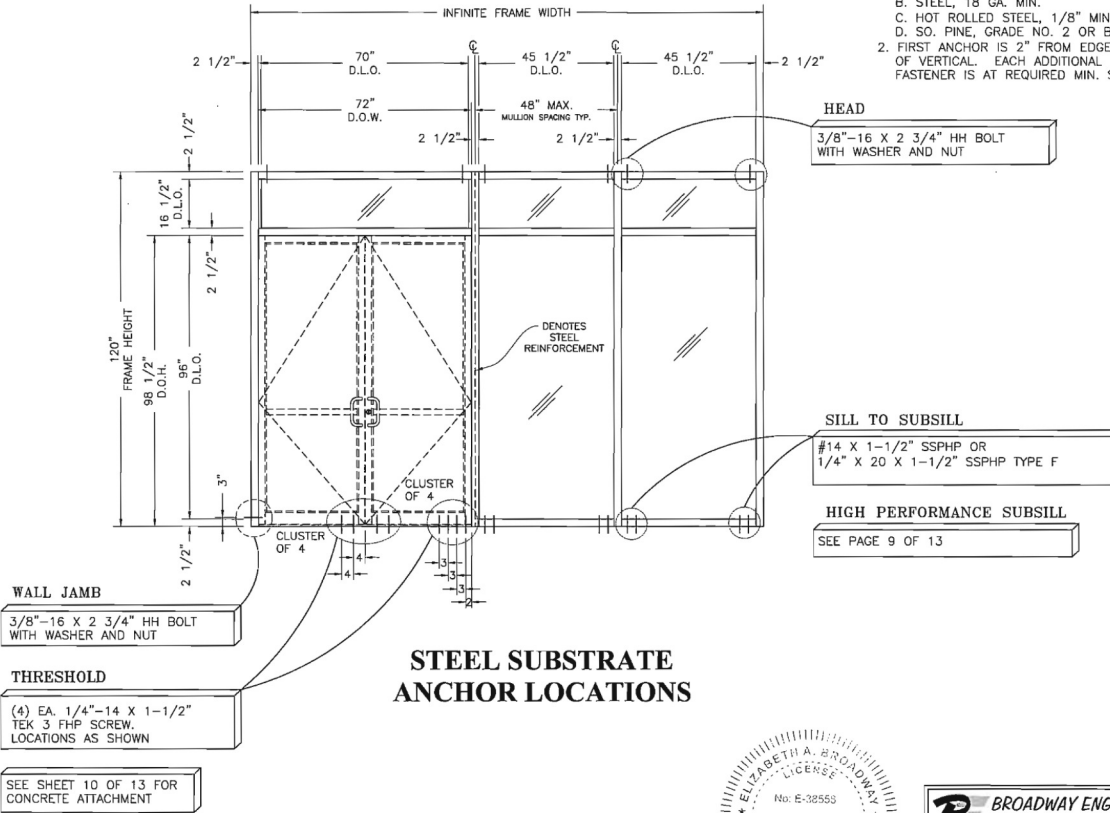
BROADWAY ENGINEERING, P.A.
CIVIL, MECHANICAL, STRUCTURAL AND BUILDING DESIGN
See Us At www.Broadway-Eng.Com
1335 W. Cass Street
Tampa, Florida 33606 813-251-9244
Fax 813-251-9330 Bus. Email: Info@Broadway-Eng.Com
BE-4177 Certificate of Authorization No. 4599

DATE 11/22/13
DRAWN DEF CHECKED WSS APPROVED EAB
PROJECT NO.
DRAWING NO. FL550T_02
SHEET 10 OF 13

Coral
Architectural Products
3010 RICE LAKE ROAD, TUSCALOOSA, AL 35406
PHONE: 800-772-7727 FAX: 800-295-3720

PRODUCT APPROVAL FOR FL550T
LARGE MISSILE DRY GLAZE SYSTEM
CONCRETE SUBSTRATE ANCHOR LOCATIONS

- PERIMETER FASTENERS:
 1. TYPICAL INSTALLATION INTO SUBSTRATES
 A. 2500 PSI CONCRETE
 B. STEEL, 18 GA. MIN.
 C. HOT ROLLED STEEL, 1/8" MIN. THICKNESS
 D. SO. PINE, GRADE NO. 2 OR BETTER
 2. FIRST ANCHOR IS 2" FROM EDGE OF VERTICAL. EACH ADDITIONAL FASTENER IS AT REQUIRED MIN. SPACING.



STEEL SUBSTRATE ANCHOR LOCATIONS

- WALL JAMB**
 3/8"-16 X 2 3/4" HH BOLT WITH WASHER AND NUT
- THRESHOLD**
 (4) EA. 1/4"-14 X 1-1/2" TEK 3 FHP SCREW. LOCATIONS AS SHOWN
- SEE SHEET 10 OF 13 FOR CONCRETE ATTACHMENT

HEAD
 3/8"-16 X 2 3/4" HH BOLT WITH WASHER AND NUT

SILL TO SUBSILL
 #14 X 1-1/2" SSPHP OR 1/4" X 20 X 1-1/2" SSPHP TYPE F

HIGH PERFORMANCE SUBSILL
 SEE PAGE 9 OF 13



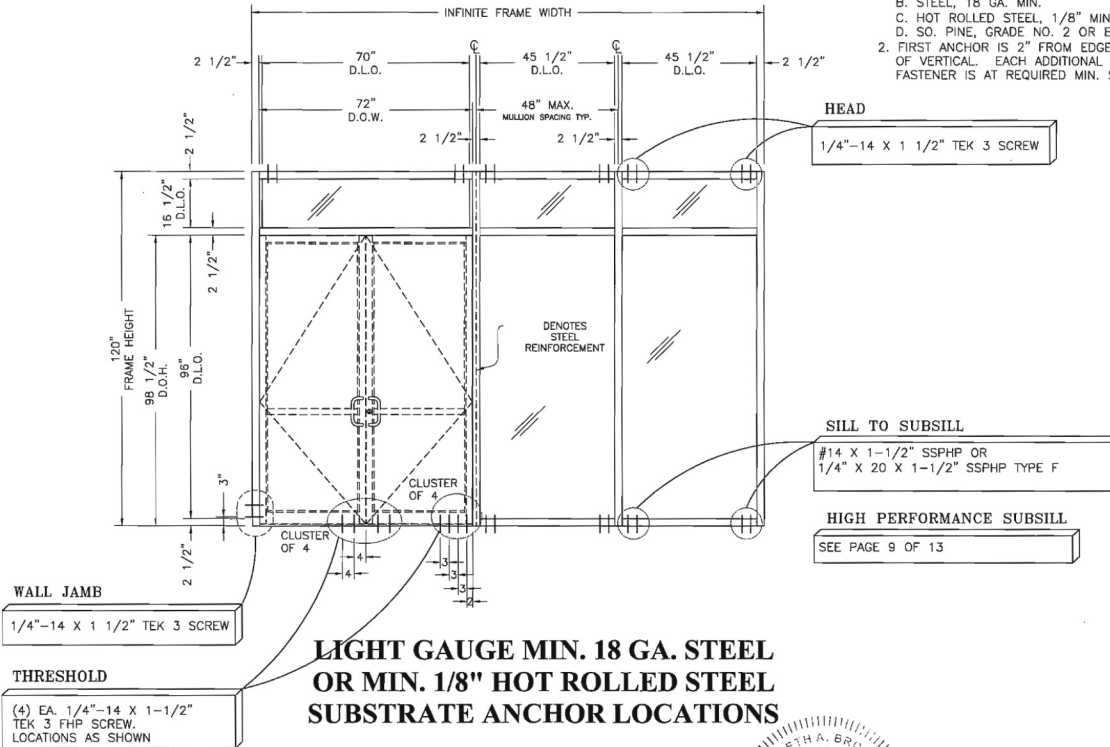
BROADWAY ENGINEERING, P.A.
 CIVIL, MECHANICAL, STRUCTURAL AND BUILDING DESIGN
 See Us At www.Broadway-Eng.Com
 1335 W. Cass Street
 Tampa, Florida 33606 813-251-9244
 Fax 813-251-9330 Bus. Email: info@broadway-eng.com
 Cold. Email: don@broadway-eng.com
 BE-4177 Certificate of Authorization No. 4599

DATE	11/22/13
DRAWN	DEG
CHECKED	WSS
APPROVED	EAB
PROJECT NO.	
DRAWING NO.	FL550T_02
SHEET	11 OF 13

PRODUCT APPROVAL FOR FL550T
 LARGE MISSILE DRY GLAZE SYSTEM

STEEL SUBSTRATE ANCHOR LOCATIONS

- PERIMETER FASTENERS:
 1. TYPICAL INSTALLATION INTO SUBSTRATES
 A. 2500 PSI CONCRETE
 B. STEEL, 18 GA. MIN.
 C. HOT ROLLED STEEL, 1/8" MIN. THICKNESS
 D. SO. PINE, GRADE NO. 2 OR BETTER
 2. FIRST ANCHOR IS 2" FROM EDGE OF VERTICAL. EACH ADDITIONAL FASTENER IS AT REQUIRED MIN. SPACING.



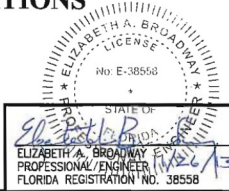
LIGHT GAUGE MIN. 18 GA. STEEL OR MIN. 1/8" HOT ROLLED STEEL SUBSTRATE ANCHOR LOCATIONS

- WALL JAMB**
 1/4"-14 X 1 1/2" TEK 3 SCREW
- THRESHOLD**
 (4) EA. 1/4"-14 X 1-1/2" TEK 3 FHP SCREW. LOCATIONS AS SHOWN
- SEE SHEET 10 OF 13 FOR CONCRETE ATTACHMENT

HEAD
 1/4"-14 X 1 1/2" TEK 3 SCREW

SILL TO SUBSILL
 #14 X 1-1/2" SSPHP OR 1/4" X 20 X 1-1/2" SSPHP TYPE F

HIGH PERFORMANCE SUBSILL
 SEE PAGE 9 OF 13



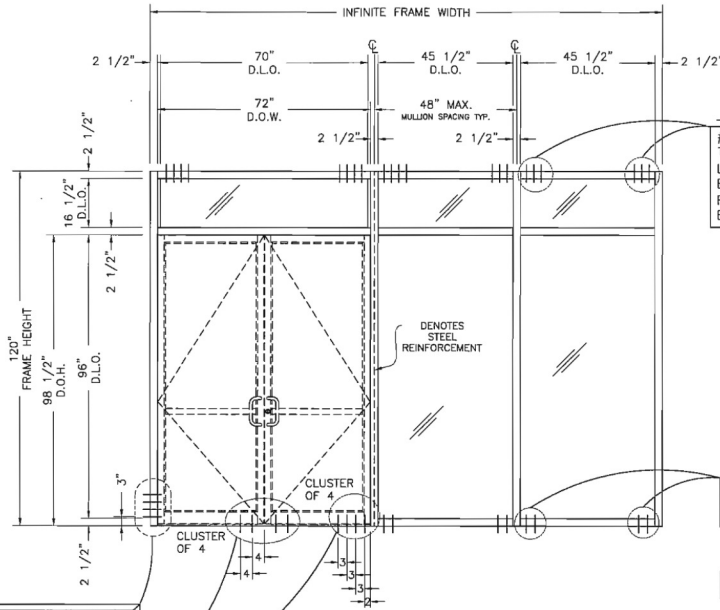
BROADWAY ENGINEERING, P.A.
 CIVIL, MECHANICAL, STRUCTURAL AND BUILDING DESIGN
 See Us At www.Broadway-Eng.Com
 1335 W. Cass Street
 Tampa, Florida 33606 813-251-9244
 Fax 813-251-9330 Bus. Email: info@broadway-eng.com
 Cold. Email: don@broadway-eng.com
 BE-4177 Certificate of Authorization No. 4599

DATE	11/22/13
DRAWN	DEG
CHECKED	WSS
APPROVED	EAB
PROJECT NO.	
DRAWING NO.	FL550T_02
SHEET	12 OF 13

PRODUCT APPROVAL FOR FL550T
 LARGE MISSILE DRY GLAZE SYSTEM

LIGHT GAUGE STEEL SUBSTRATE ANCHOR LOCATIONS

- PERIMETER FASTENERS:
 1. TYPICAL INSTALLATION INTO SUBSTRATES
 A. 2500 PSI CONCRETE
 B. STEEL, 18 GA. MIN.
 C. HOT ROLLED STEEL, 1/8" MIN. THICKNESS
 D. SO. PINE, GRADE NO. 2 OR BETTER
 2. FIRST ANCHOR IS 2" FROM EDGE OF VERTICAL. EACH ADDITIONAL FASTENER IS AT REQUIRED MIN. SPACING.



HEAD
 #14 X 2 1/2" WOOD SCREWS TYP. WITH 2" MIN. EMBEDMENT. LOCATE FIRST ANCHOR 2" FROM EDGE OF MULLION AND ADDITIONAL FASTENER @ 2" MIN. SPACING BETWEEN ANCHORS.

SILL TO SUBSILL
 #14 X 1-1/2" SSPHP OR 1/4" X 20 X 1-1/2" SSPHP TYPE F

HIGH PERFORMANCE SUBSILL
 SEE PAGE 9 OF 13

WALL JAMB
 #14 X 2 1/2" WOOD SCREWS TYP. WITH 2" MIN. EMBEDMENT

THRESHOLD
 (4) EA. 1/4"-14 X 1-1/2" TEK 3 FHP SCREW. LOCATIONS AS SHOWN

SEE SHEET 10 OF 13 FOR CONCRETE ATTACHMENT

WOOD SUBSTRATE ANCHOR LOCATIONS



B BROADWAY ENGINEERING, P.A.
 CIVIL, MECHANICAL, STRUCTURAL AND BUILDING DESIGN
 See Us At www.Broadway-Eng.Com
 1335 W. Cass Street
 Tampa, Florida 33606 813-251-9244
 Fax 813-251-9330 Bus. Email: info@broadway-eng.com
 Cust. Email: DGerr@broadway-eng.com
 BE-4177 Certificate of Authorization No. 4599

DATE		11/22/13
DRAWN	CHECKED	APPROVED
ENG	MS	EAB
PROJECT NO.		
DRAWING NO.		
FL550T_02		
SHEET 13 OF 13		

Architectural Products
 13608
 PHONE 800-275-7373 FAX 800-255-7329

Coral

PRODUCT APPROVAL FOR FL550T
 LARGE MISSILE DRY GLAZE SYSTEM

WOOD SUBSTRATE ANCHOR LOCATIONS