



Quality Accuracy Assurance

Fenestration Testing Laboratory, Inc.

8148 N.W. 74th Avenue Medley, FL 33166 Phone: (305) 885-3328 Fax: (305) 885-3329 (888) 819-7877
e-mail: clientservices@ftl-inc.com www.ftl-inc.com

Report Date: 9/24/2015
Test Date: 9/1/2015
Expiration Date: 9/1/2019
Lab. Number: 8646
Project Number: 15-5995
Revision Number: 0

Condensation Performance Test Report

Manufacture: Coral Architectural Products

Address: 7704B Industrial Lane
Tampa, Florida 33637

Specifications: AAMA 1503-2009: Voluntary Test Method for Thermal Transmittance and Condensation Resistance of Windows, Doors and Glazed Wall Sections

Product Description

Model Designation:	Series: FL550 Impact Flush Glaze Store Front
Overall Size:	2000mm (79") by 2000mm (79") high

Frame Construction

Frame Material, Color and Finish:	Painted gray aluminum alloy non thermally broken
--	--

Glazing Description

Layer 1:	1/4" clear glass ** (Sungate 500 on surface #2)
Gap:	1/2" gap using a Super Spacer
Layer 2:	1/4" clear-0.060 SGP-1/4" clear

***as per manufacture*

Glazing Method

Interior Condition:	Silicone and EPDM
Exterior Condition:	EPDM

Gas Type	Filling Technique	Gas Fill Percentage
None	None	None

Daylight Opening

Left and Right Sections	35 3/4" by 73 1/2" high
-------------------------	-------------------------

Weathers-Stripping

Quantity	Description	Location
None	None	None



Quality Accuracy Assurance

Fenestration Testing Laboratory, Inc.

8148 N.W. 74th Avenue Medley, FL 33166 Phone: (305) 885-3328 Fax: (305) 885-3329 (888) 819-7877

e-mail: clientservices@ftl-inc.com www.ftl-inc.com

Report Date: 9/24/2015
Test Date: 9/1/2015
Expiration Date: 9/1/2019
Lab. Number: 8646
Project Number: 15-5995
Revision Number: 0

Hardware		
Quantity	Description	Location
None	None	None

Weep Holes		
Quantity	Description	Location
None	None	None

Reinforcement	
Material	Location
None	None

Dividers/Grids		
Grid Size	Material	Grid Pattern
None	None	None



Quality Accuracy Assurance

Fenestration Testing Laboratory, Inc.

8148 N.W. 74th Avenue Medley, FL 33166 Phone: (305) 885-3328 Fax: (305) 885-3329 (888) 819-7877

e-mail: clientservices@ftl-inc.com www.ftl-inc.com

Report Date: 9/24/2015
Test Date: 9/1/2015
Expiration Date: 9/1/2019
Lab. Number: 8646
Project Number: 15-5995
Revision Number: 0

Measured and Calculated Test Data

Condensation Resistance Factor (CRF):

Warm side ambient air temperature (T_h):	69.80 F
Cold side ambient air temperature (T_c):	-0.31 F
Average of pre-specified frame temperature (FT_p):	40.5 F
Average of roving thermocouples (FT_r):	33.8 F

Calculated Weighting Factor

Frame Temperature (FT)	39.9 F
Glass Temperature (GT)	48.2 F
Condensation Resistance Factor of glass (CRF_G)	69
Condensation Resistance Factor of frame (CRF_f)	57

Thermal Transmittance (U_c):

Nominal sample Area	43.34 ft ²
Total measured input to calorimeter	1601.28 Btu/hr
Calorimeter correction	173.66 Btu/hr
Net specimen	1430.57 Btu/hr
Thermal Transmittance (U_c)	0.48 Btu/hr·ft ² ·F
Static pressure difference across test sample 15 mph dynamic perpendicular wind at exterior(P)	0.00 psf



Quality Accuracy Assurance

Fenestration Testing Laboratory, Inc.

8148 N.W. 74th Avenue Medley, FL 33166 Phone: (305) 885-3328 Fax: (305) 885-3329 (888) 819-7877

e-mail: clientservices@ftl-inc.com www.ftl-inc.com

Report Date: 9/24/2015
Test Date: 9/1/2015
Expiration Date: 9/1/2019
Lab. Number: 8646
Project Number: 15-5995
Revision Number: 0

Temperature Data

Individual Average pre-specified Frame

1	35.8
2	34.7
3	35.1
4	44.1
5	45.7
6	45.4
7	44.7
8	44.4
9	39.8
10	41.1
11	38.2
12	37.8
13	43.1
14	36.8
FT _p	40.5

Individual Average pre-specified Glass

15	37.4
16	51.1
17	51.3
18	50.9
19	49.8
20	48.5
GT	48.2

Individual Average Frame Cold Point (Roving)

21	31.8
22	33.5
23	34.9
24	35.1
FT _r	33.8



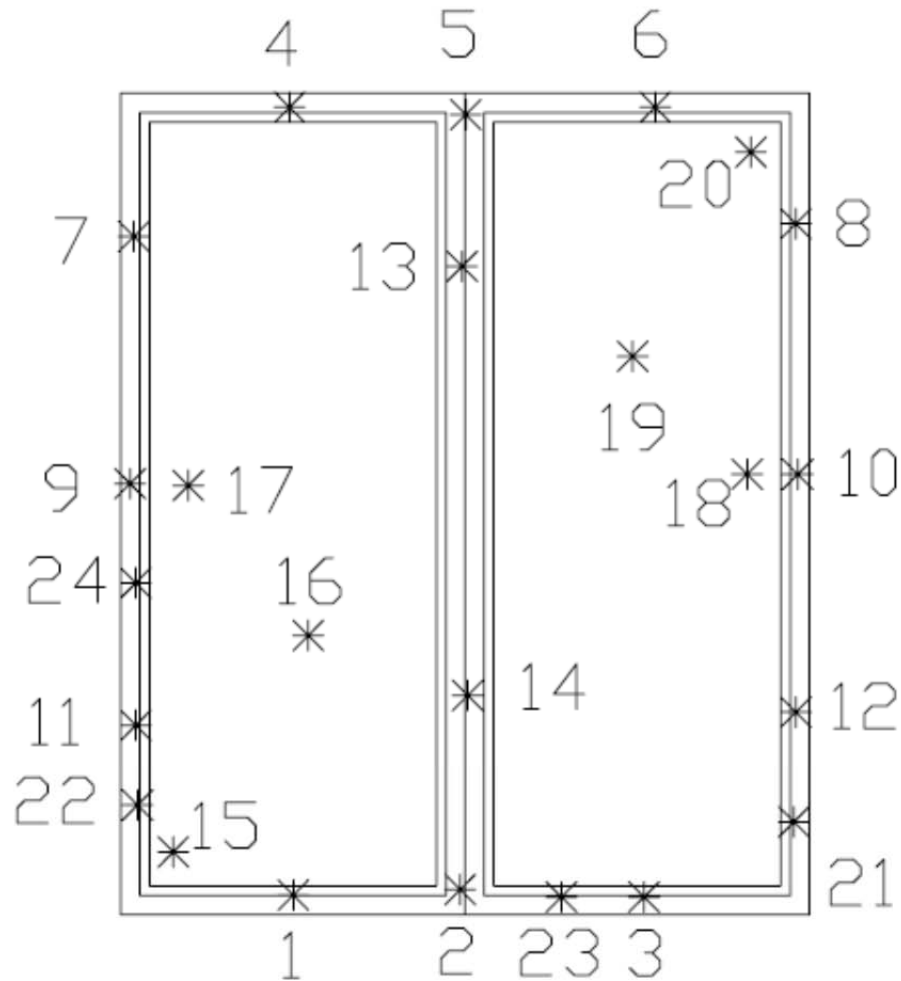
Quality Accuracy Assurance

Fenestration Testing Laboratory, Inc.

8148 N.W. 74th Avenue Medley, FL 33166 Phone: (305) 885-3328 Fax: (305) 885-3329 (888) 819-7877
e-mail: clientservices@ftl-inc.com www.ftl-inc.com

Report Date:	9/24/2015
Test Date:	9/1/2015
Expiration Date:	9/1/2019
Lab. Number:	8646
Project Number:	15-5995
Revision Number:	0

Thermocouple Location Diagram





Quality Accuracy Assurance

Fenestration Testing Laboratory, Inc.

8148 N.W. 74th Avenue Medley, FL 33166 Phone: (305) 885-3328 Fax: (305) 885-3329 (888) 819-7877

e-mail: clientservices@ftl-inc.com www.ftl-inc.com

Report Date: 9/24/2015
Test Date: 9/1/2015
Expiration Date: 9/1/2019
Lab. Number: 8646
Project Number: 15-5995
Revision Number: 0

Test Duration

1. The environmental systems were started at 09:15 hours on 8/31/2015.
2. The test parameters were considered stable from 04:15 hours on 9/1/2015 to 08:15 hours on 9/1/2015.

Glazing Deflection (in.)	Left Section	Right Section
Gap width upon receipt of sample in laboratory	1/2"	1/2"
Gap width at laboratory ambient conditions on day of testing	1/2"	1/2"
Center of gap at conclusion of test	7/16"	7/16"

Remarks
The sample was inspected for the formation of frost or condensation, which may influence the surface temperature measurements. The sample showed no evidence of condensation/frost at the conclusion of the test.
The calibration of Fenestration Testing Laboratory's "thermal test chamber" was conducted in June 2015.
Drawings referenced in this document are an integral part of this report, therefore, are required when distributing this test report. Test results obtained represent the actual value of the tested specimens and do not constitute opinion, endorsement or certification by this laboratory.
This test report is considered the exclusive property of the client named herein and is applicable to the sample tested. This report may not be reproduced without the approval of Fenestration Testing Laboratory, Inc and if so must be in full.
The sample was sealed with silicone on the interior and tested per Section 9.3.4 for air infiltration. The testing described in this test report was conducted in accordance with AAMA 1503 requirements.

Revision History Table			
Revision	Description	Author	Effective Date
0	Initial Release	Jose Sanchez	9/24/2015

FENESTRATION TESTING LABORATORY, INC.

Jose Sanchez

Jose Sanchez

Test Performed by

Jose Sanchez

Person - in- Responsible- Charge



Quality Accuracy Assurance

Fenestration Testing Laboratory, Inc.

8148 N.W. 74th Avenue Medley, FL 33166 Phone: (305) 885-3328 Fax: (305) 885-3329 (888) 819-7877
e-mail: clientservices@ftl-inc.com www.ftl-inc.com

Report Date:	9/24/2015
Test Date:	9/1/2015
Expiration Date:	9/1/2019
Lab. Number:	8646
Project Number:	15-5995
Revision Number:	0

APPENDIX

Fenestration Product Drawings and Bill of Material



FL550 AAMIA 507
NFRCCMAST SUBMITTAL
DRAWINGS

INDEX TO DRAWINGS	
1	INDEX TO DRAWINGS AND NOTES
2	STANDARD FRAMING ELEVATION
3	STANDARD FRAMING DETAILS
4	STANDARD FRAMING DETAILS
5	BILL OF MATERIALS
6	DIE DRAWINGS

Tested Sample complies with this
detail except where noted

Laboratory Report Number: 8646

Date: 11/24/2015

Initials: JS

[illegible]

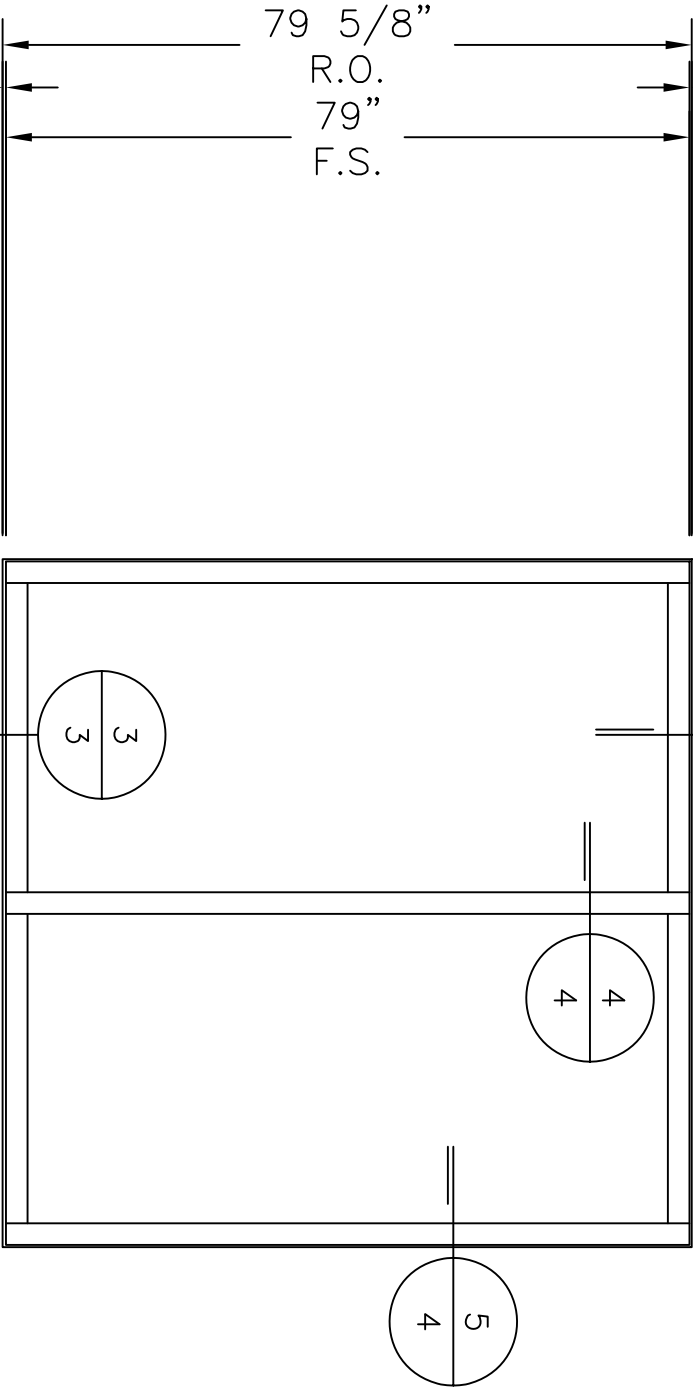
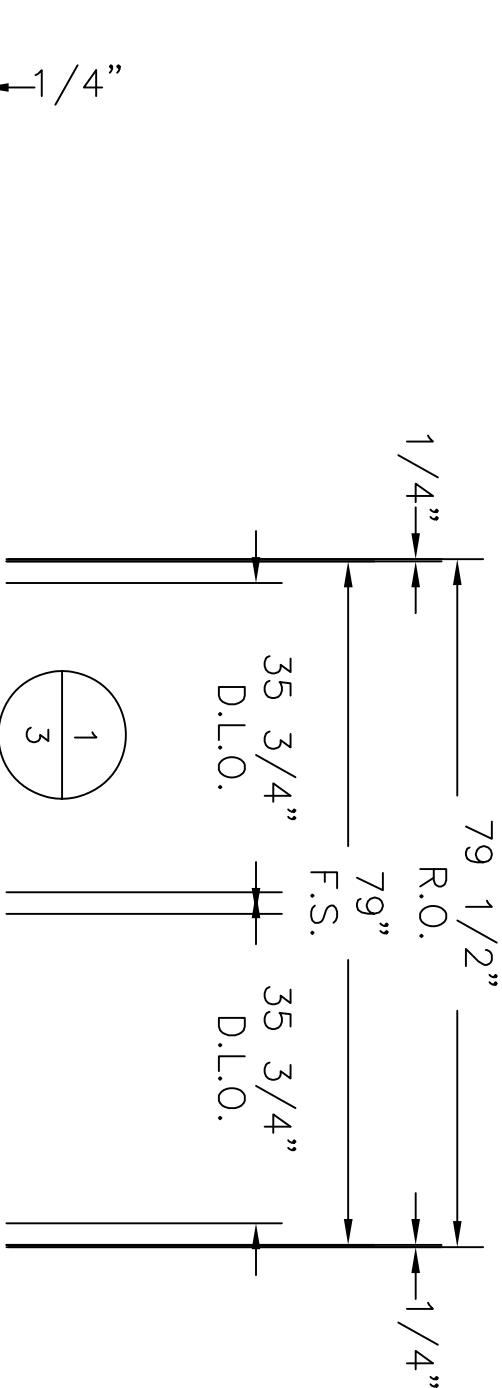
S:\coral logos\CAPTtitlePageLogo.jpg

FL550 AAMA 507 SIMULATION NFRC CMAST
SUBMITTAL DRAWINGS

INDEX TO DRAWINGS AND NOTES

PROJECT NO.		AAMIA FL550	
DRAWN	DATE	04-Nov-15	
WS			
CHECKED	APPROVED		
---	WS		
SHEET			

1



TYPICAL ELEVATION FOR FL550 AAMA 507
SIMULATION NFRC CMAST

GLASS TYPE: 1/4" T SUNGATE LOW E ON SURFACE 2 x 1/2" AS x 1/4"
CL T X.090 SENTRY GLASS x 1/4" CL T

Tested Sample complies with this
detail except where noted
Laboratory Report Number: 8646
Date: 11/24/2015
Initials: JS

S:\coral logos\CAPTitlePageLogo.jpg

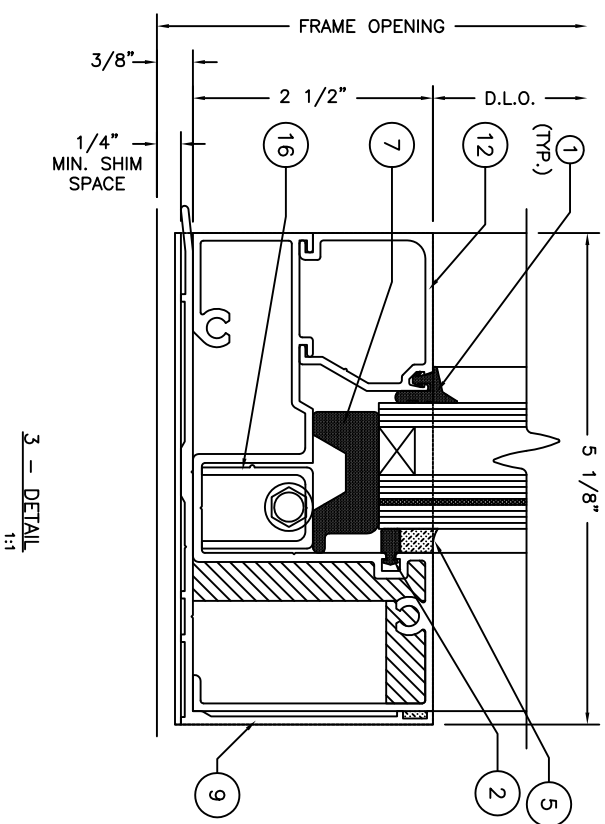
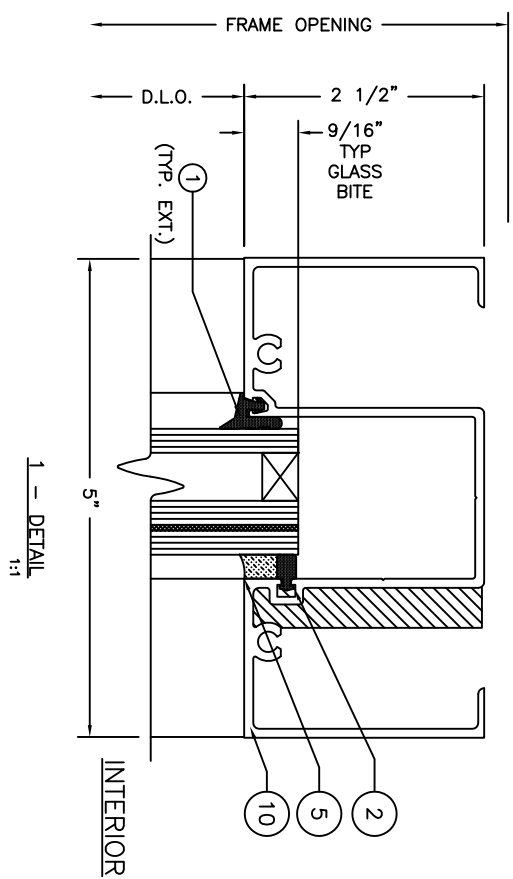
DESCRIPTION			
Remove Horiz detail added glass call out	7-OCT-15	WS	---
DATE	BY	REV	---

FL550 AAMA 507 SIMULATION NFRC CMAST
SUBMITTAL DRAWINGS

STANDARD FRAMING ELEVATION

PROJECT NO. AAMA FL550	
DRAWN MJ	DATE 11/4/2015
CHECKED ---	APPROVED ---

SHEET



Tested Sample complies with this
detail except where noted
Laboratory Report Number: 8646
Date: 11/24/2015
Initials: JS

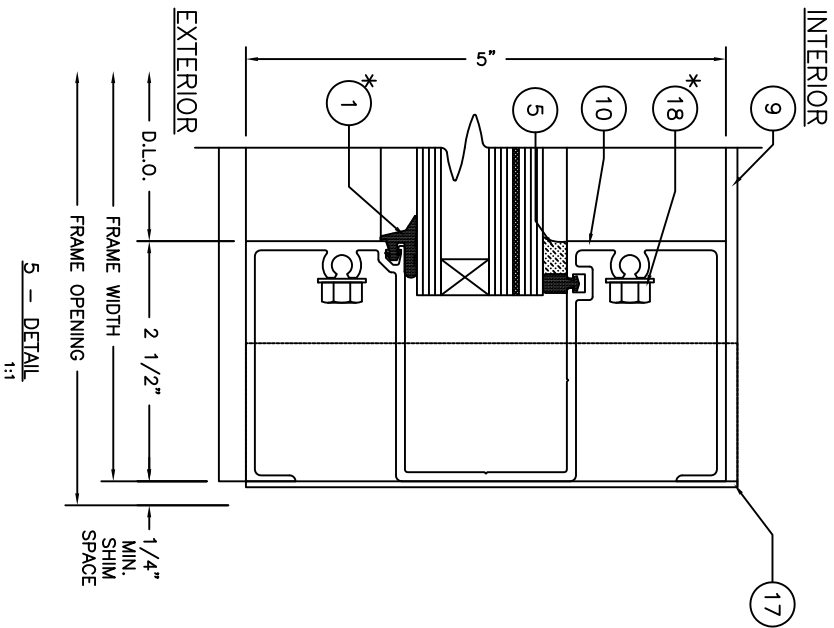
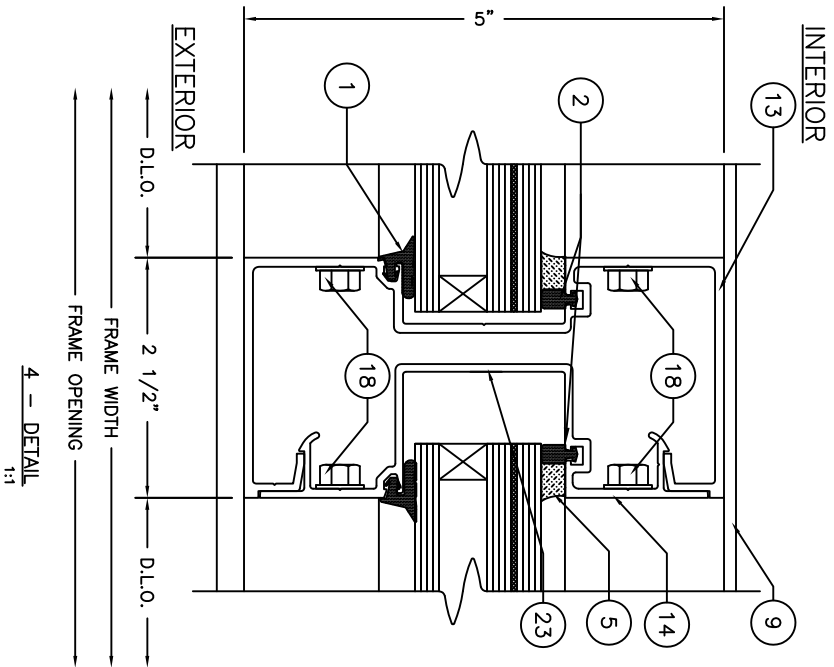
[illegible]

S:\coral logos\CAPTTitlePageLogo.jpg

FL550 AAMA 507 SIMULATION NFRC CMAA
SUBMITTAL DRAWINGS

STANDARD FRAMING DETAILS

PROJECT NO.		AAMA FL550	
DRAWN	DATE	11/4/2015	
W/S			
CHECKED	APPROVED		
---	W/S		
SHEET			



Tested Sample complies with this detail except where noted
Laboratory Report Number: 8646
Date: 11/24/2015
Initials: JS

DESCRIPTION			
REV	BY	DATE	
WS	04-Nov-15	Removed substrates-anchors added NG14 and 995	
---	---	-----	

S:\coral logos\CAPTtitlePageLogo.jpg

FL550 AAMA 507 SIMULATION NFRC CMAST
SUBMITTAL DRAWINGS

STANDARD FRAMING DETAILS

PROJECT NO. AAMA FL550	
DRAWN WS	DATE 11/4/2015
CHECKED ---	APPROVED WS

SHEET

BILL OF MATERIALS

ITEM NO.	P/N	DESCRIPTION	DIMENSIONS	MATERIAL	MANUFACTURER	NOTES
1	NG1	EXTERIOR GLAZING GASKET	0.120 SPACE	EPDM	VARIES	
2	NG14	INTERIOR SPACER GASKET	0.250 SPACE	EPDM	VARIES	
3	SM5601	JOINT SEALANT TAPE	0.500 X 0.125 X VARIES	BUTYL	SCHNEE-MOOREHEAD	
5	995	SILICONE – GLASS TO METAL	FILL SPACE	SILICONE	DOW CORNING	GLASS TO METAL AND INTERNAL
6	FL515-1	FLAT FILLER	0.681 X 4.658 X 0.070	6063-T6 ALUMINUM	CORAL INDUSTRIES, INC.	
7	SB15	SETTING BLOCK @ SILL & HORIZONTAL	0.687 X 1.468 X 4.000	EPDM	VARIES	2 PER LITE
8	WD300-1	WATER DIVERTER	1.358 X 1.344 X 4.000	INJECTION MOLDED PLASTIC	CORAL INDUSTRIES, INC.	@ EACH END OF HORIZONTAL
9	FL519	SUBSILL FLASHING	2.620 X 5.402 X 0.084	6063-T6 ALUMINUM	CORAL INDUSTRIES, INC.	
10	FL551	HEAD OR WALL JAMB	2.500 X 5.000 X 0.094	6063-T6 ALUMINUM	CORAL INDUSTRIES, INC.	
11	FL552	SILL OR HEAD	2.500 X 4.980 X 0.094	6063-T6 ALUMINUM	CORAL INDUSTRIES, INC.	
12	FL553	GLASS STOP	1.250 X 1.646 X 0.078	6063-T6 ALUMINUM	CORAL INDUSTRIES, INC.	
13	FL554	STD. VERTICAL MULLION	2.500 X 5.000 X 0.094	6063-T6 ALUMINUM	CORAL INDUSTRIES, INC.	
14	FL555	OPEN BACK MULLION FILLER	0.681 X 4.670 X 0.080	6063-T6 ALUMINUM	CORAL INDUSTRIES, INC.	
15	FL556	INTERMEDIATE HORIZONTAL	2.500 X 4.980 X 0.094	6063-T6 ALUMINUM	CORAL INDUSTRIES, INC.	
16	CS500-1	SETTING CHAIR	1.156 X 0.844 X 0.078	6063-T6 ALUMINUM	CORAL INDUSTRIES, INC.	
17	ED519-1	SILL FLASHING END DAM	2.500 X 1.000 X 0.062	6063-T6 ALUMINUM	CORAL INDUSTRIES, INC.	
18	AS16	FASTENER	#14 X 1" HHSTS	STEEL	VARIES	TYP. SPLINE SCREW VERTICAL/HORIZONTAL JOINTS
19	NOT USED					
20	AS21	FASTENER	#6 X 1/4" PPH	STEEL	VARIES	ANCHOR(17) (ED519-1) TO(9)(FL539T)
23	AS29	FASTENER	#8 X 2" FHPUC	S. STEEL	VARIES	ANCHOR (14) FL575T TO (13) FL574T COUNTER SINK AND BREAK OFF

Tested Sample complies with this detail except where noted
Laboratory Report Number: 8646
Date: 11/24/2015
Initials: JS

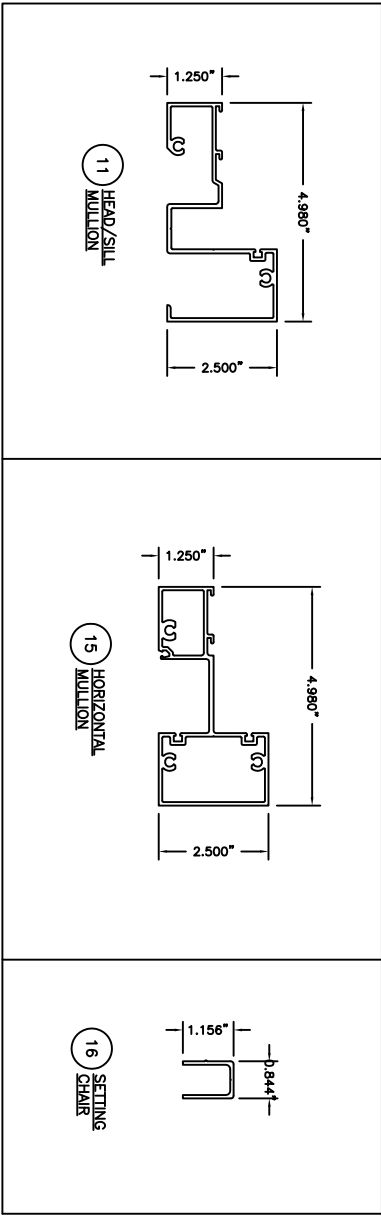
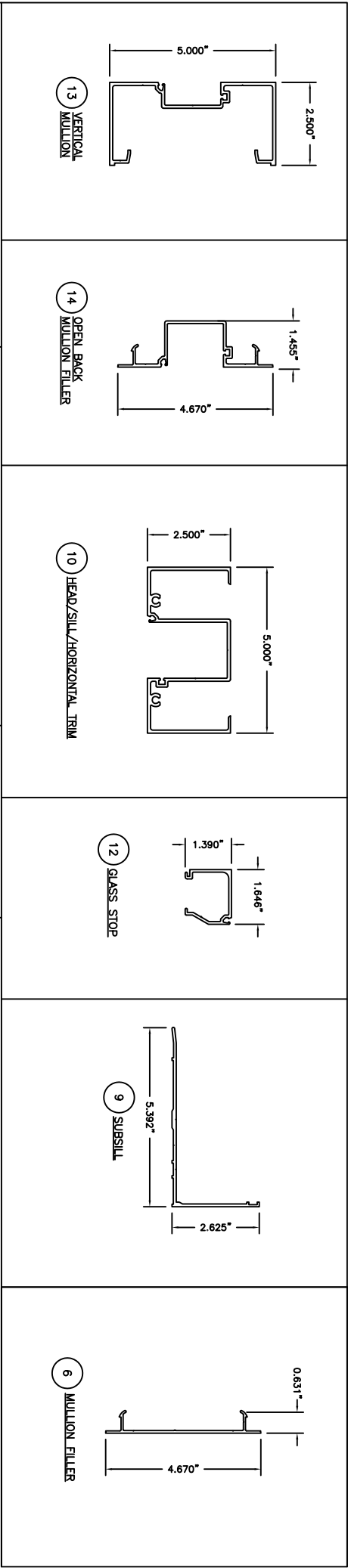
[illegible]

S:\coral logos\CAPTtitlePageLogo.jpg

FL550 AAMA 507 SIMULATION NFRC CMAST
SUBMITTAL DRAWINGS

BILL OF MATERIALS

PROJECT NO.		AAMA FL550
DRAWN	DATE	11/4/2015
W/S		
CHECKED	APPROVED	
---	W/S	
SHEET		



Tested Sample complies with this detail except where noted
Laboratory Report Number: 8646
Date: 11/24/2015
Initials: JS

