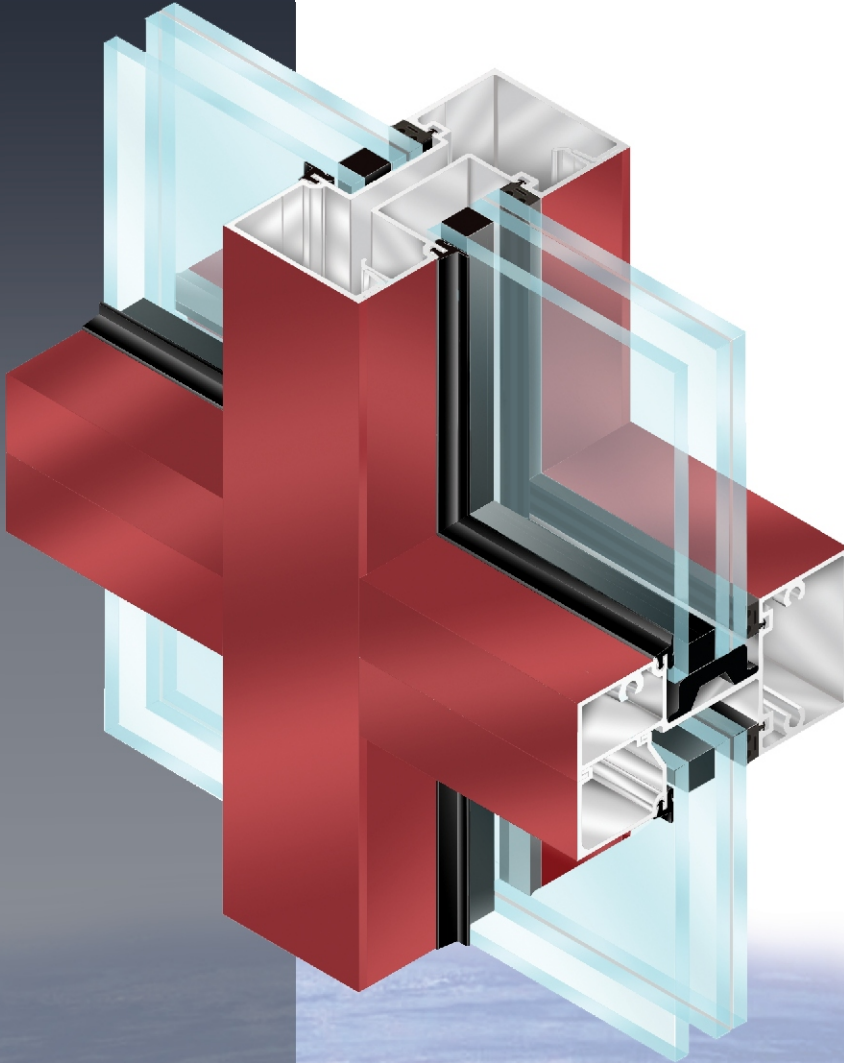




Hurricane Impact-Resistant

GLAZING SYSTEM



FL550 Storefront System

Dry Glaze

- Design Pressure = +70/-70 PSF
- Water @ 15 PSF
- Air Infiltration at 6.24 PSF < .06 CFM

Extreme environmental conditions call for a glazing system equally extreme.

Coral's Hurricane Impact-Resistant Systems are designed to provide structural integrity under the intense demands of nature at its worst. Independent laboratory testing has proven our systems sound against impact and wind forces in excess of 165 MPH.

Prepare for the worst with the best!

FL550

STOREFRONT SYSTEM • 1-5/16"



Coral

▪ Architectural Products ▪

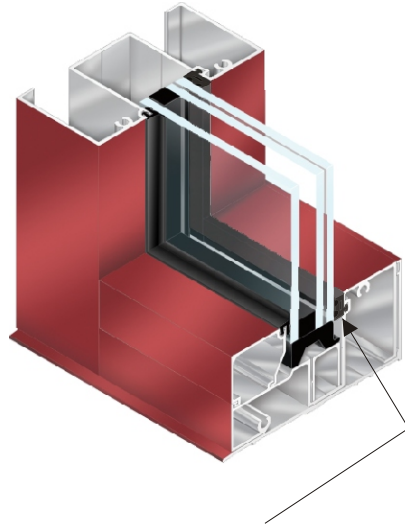


Hurricane Impact-Resistant GLAZING SYSTEM

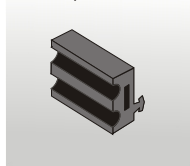
FL550

STOREFRONT SYSTEM • 1-5/16"

- 2-1/2" x 5" for 1-5/16" glazing infill
- Screw-spline joinery
- Hydraulic CoraPunch or drill jig fabrication options
- Heavy wall mullion option without steel
- Tested with and without steel reinforcement



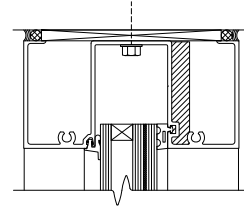
Dry Glaze



DuPont™ and SentryGlas™ SG interlayer used with interior dry gaskets.

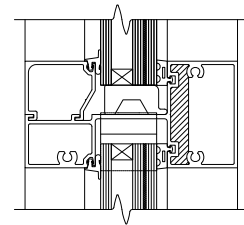
HEAD

Dry Glaze



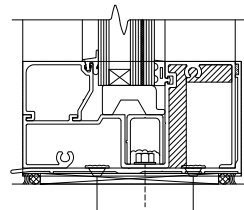
HORIZONTAL

Dry Glaze



SILL

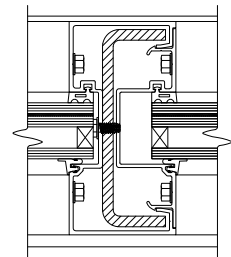
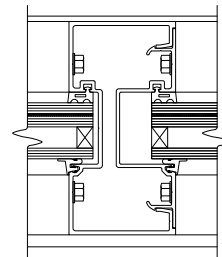
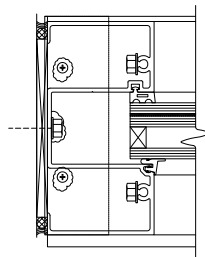
Dry Glaze



JAMB

VERTICAL STEEL REINFORCEMENT

VERTICAL



Dry Glaze

*DuPont™ and SentryGlas® are trademarks and registered trademarks of E.I. DuPont de Nemours and Company or its affiliates.



Coral

Architectural Products

3010 Rice Mine Road ■ Tuscaloosa, AL 35406
1.800.772.7737 ■ Fax 1.800.443.6261 ■ www.coralind.com