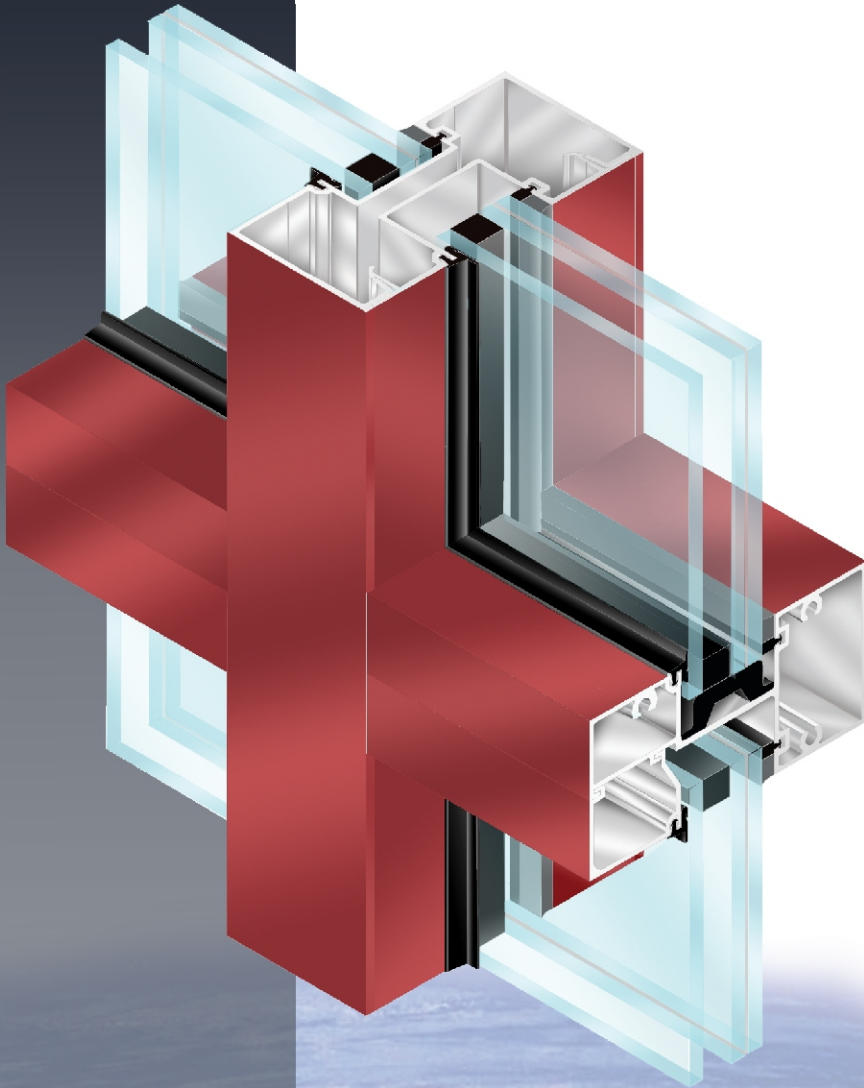


Hurricane Impact-Resistant

GLAZING SYSTEM



FL550 Storefront System

- Design Pressure = +70/-80 PSF
- Water @ 15 PSF
- Air Infiltration at 6.24 PSF < .06 CFM

Extreme environmental conditions call for a glazing system equally extreme.

Coral's Hurricane Impact-Resistant Systems are designed to provide structural integrity under the intense demands of nature at its worst. Independent laboratory testing has proven our systems sound against impact and wind forces in excess of 178 MPH.

Prepare for the worst with the best!

FL550

STOREFRONT SYSTEM • 1-5/16"


FRONT LINE
ALUMINUM SYSTEMS

Coral

▪ Architectural Products ▪

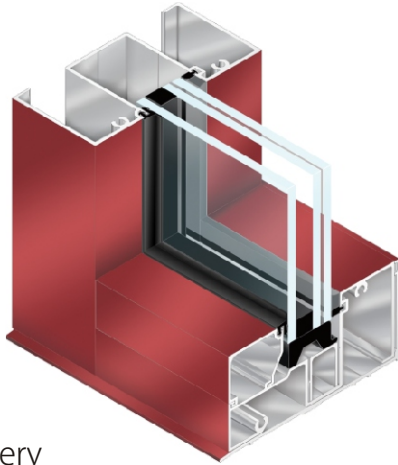


Hurricane Impact-Resistant GLAZING SYSTEM

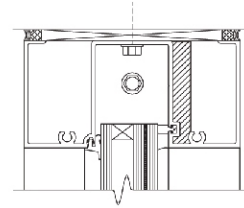
FL550

STOREFRONT SYSTEM • 1-5/16"

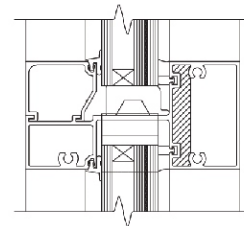
- 2-1/2" x 5" for 1-5/16" glazing infill
- Screw-spline joinery
- Hydraulic CoraPunch or drill jig fabrication options
- Heavy wall mullion option without steel
- Tested with and without steel reinforcement



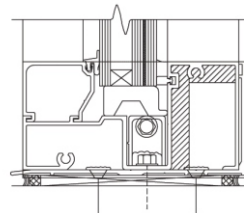
HEAD



HORIZONTAL



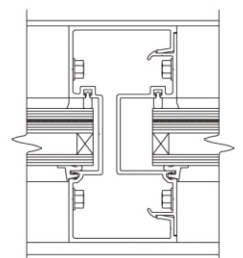
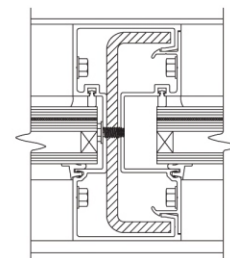
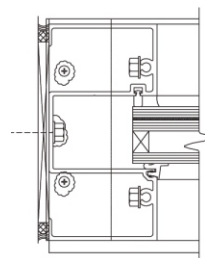
SILL



JAMB

VERTICAL STEEL REINFORCEMENT

VERTICAL



FRONT LINE
ALUMINUM SYSTEMS

Coral

Architectural Products

3010 Rice Mine Road ■ Tuscaloosa, AL 35406
1.800.772.7737 ■ Fax 1.800.443.6261 ■ www.coralind.com