

PRODUCT APPROVAL DRAWINGS FL550 FRAMING SYSTEM WITH MULTIPLE INFILLS FOR USE IN HURRICANE ZONES REQUIRING LARGE MISSILE IMPACT PROTECTION

INDEX TO DRAWINGS

| | |
|-------------|--|
| SHEET 1: | INDEX TO DRAWINGS AND NOTES |
| SHEET 2: | TYPICAL ELEVATION LIGHT ALUM. MULLION WITH STEEL-LONG SPAN |
| SHEET 3: | TYPICAL ELEVATION LIGHT ALUM. MULLION WITHOUT STEEL-SHORT SPAN |
| SHEET 4: | TYPICAL ELEVATION HEAVY ALUM. MULLION WITHOUT STEEL-LONG SPAN |
| SHEET 5: | TYPICAL ELEVATIONS FOR DOORFRAMES WITH A TRANSOM - WITH OR WITHOUT A SIDE LIGHT |
| SHEET 6: | TYPICAL ELEVATIONS FOR DOORFRAMES WITHOUT A TRANSOM - WITH OR WITHOUT A SIDE LIGHT |
| SHEET 7: | GLAZING SCHEDULE |
| SHEET 8-12: | FRAMING DETAILS |
| SHEET 13: | BILL OF MATERIALS FOR FRAMING AND ACCESSORIES |
| SHEET 14: | PERIMETER FASTENER LOCATIONS - FOR DOORFRAMES - CONCRETE SUBSTRATE |
| SHEET 15: | PERIMETER FASTENER LOCATIONS - FOR DOORFRAMES - STEEL SUBSTRATE |
| SHEET 16: | PERIMETER FASTENER LOCATIONS - FOR DOORFRAMES - WOOD SUBSTRATE |

GENERAL NOTES:

TEST STANDARDS
 AIR-TAS202
 WATER-TAS202
 STATIC-TS202
 IMPACT-TS201
 CYCLIC-TS203

DESIGN PRESSURE VARIES
 REF. SHEETS 2-6 OF 16

WATER INFILTRATION: 15 PSF

AIR INFILTRATION: 6.24 PSF

TYPICAL GLASS BITE IS 9/16" UNLESS OTHERWISE NOTED.

1/4" MAX SHIM SPACE @ PERIMETER UNLESS OTHERWISE NOTED

ALL ALUMINUM EXTRUSIONS SHALL BE MADE FROM 6063-T6 ALLOY AND TEMPER.

THIS PRODUCT HAS BEEN DESIGNED AND TESTED TO COMPLY WITH FLORIDA BUILDING CODE ADDITION 2004 INCLUDING HIGH VELOCITY HURRICAN ZONES.

MATERIALS, INCLUDING BUT NOT LIMITED TO STEEL SCREWS, THAT COME IN CONTACT WITH OTHER DISSIMILAR MATERIALS SHALL MEET THE REQUIREMENTS OF 2004 FLORIDA BUILDING CODE SECTION 2003.8.4

SERIES 381 AND 281 ENTRANCE DOORS FOR FL 550 FRAMING SYSTEM ARE SHOWN ON SEPARATE SUBMISSION. THE LOWER DESIGN PRESSURE OF WINDOW WALL OR DOOR WILL GOVERN

ABBREVIATIONS:

D.L.O. = DAY LIGHT OPENING
 C.O.C. = CONCEALED OVERHEAD CLOSER
 TYP. = TYPICAL
 D.O.W. = DOOR OPENING WIDTH
 D.O.H. = DOOR OPENING HEIGHT
 S.A.C. = SURFACE APPLIED CLOSER

DEFINITIONS: DICTIONARY OF ARCHITECTURE & CONSTRUCTION-2ND EDITION


1. SIDE LIGHT - A FRAMED AREA OF FIXED GLASS ALONGSIDE A DOOR
2. TRANSOM FRAME - A DOORFRAME WITH A TRANSOM BAR AND GLASS ABOVE THE DOOR

Lewis A. Waldrop, P.E.
 P. O. Box 620
 Alto, GA 30510
 706-778-3784

Lewis A. Waldrop, P.E.
FLA. P.E. #21959

Lewis A. Waldrop
 3/3/08

DRAWINGS FOR
 DADE COUNTY
 PRODUCT APPROVAL

| | | | | | | | | | | | | | |
|--|---|----------|--|--|--|--|--|--|--|--|--|--|--|
| | | | | | | | | | | | | | |
|  Architectural Products <small>3010 RICE MAINE ROAD, TUSCALOOSA, AL 35408 PHONE: 800-772-7737 FAX: 800-443-8261</small> | PRODUCT APPROVAL DRAWINGS FL550 WINDOW WALL SYSTEM PROTOCOLS: PA201/202/203 TYPICAL ELEVATION LIGHT ALUM. MULLION WITH STEEL-LONG SPAN | | | | | | | | | | | | |
| DATE | 1/8/2008 | | | | | | | | | | | | |
| DRAWN | CHECKED | APPROVED | | | | | | | | | | | |
| PCH | JDW | JDW | | | | | | | | | | | |
| PROJECT NO. | | | | | | | | | | | | | |
| DRAWING NO. | FL550_03 | | | | | | | | | | | | |
| SHEET | 1 OF 16 | | | | | | | | | | | | |

HEAD/SILL @ WOOD SUBSTRATE

3/8" x 3-1/2" LONG LAG BOLTS TYP. @ WOOD WITH 3" MIN. EMBEDMENT. LOCATE FIRST ANCHOR 2" FROM EDGE OF MULLION AND ADDITIONAL FASTENERS @ 2" MIN. SPACING BETWEEN ANCHORS.

SILL/HEAD @ STEEL SUBSTRATE

3/8" -16 x 1-1/2" HWH TYPE "F" TCS TYP. @ STEEL. LOCATE FIRST ANCHOR 2" FROM EDGE OF MULLION AND ADDITIONAL FASTENERS @ 2" MIN SPACING BETWEEN ANCHORS

HEAD/SILL @ CONCRETE SUBSTRATE

3/8" x 2-1/2" LONG LDT TYP. @ CONCRETE WITH 2" MIN. EMBEDMENT. LOCATE FIRST ANCHOR 2" FROM EDGE OF MULLION AND ADDITIONAL FASTENERS @ 6" MIN. SPACING BETWEEN ANCHORS.

WALL JAMB @ CONCRETE SUBSTRATE

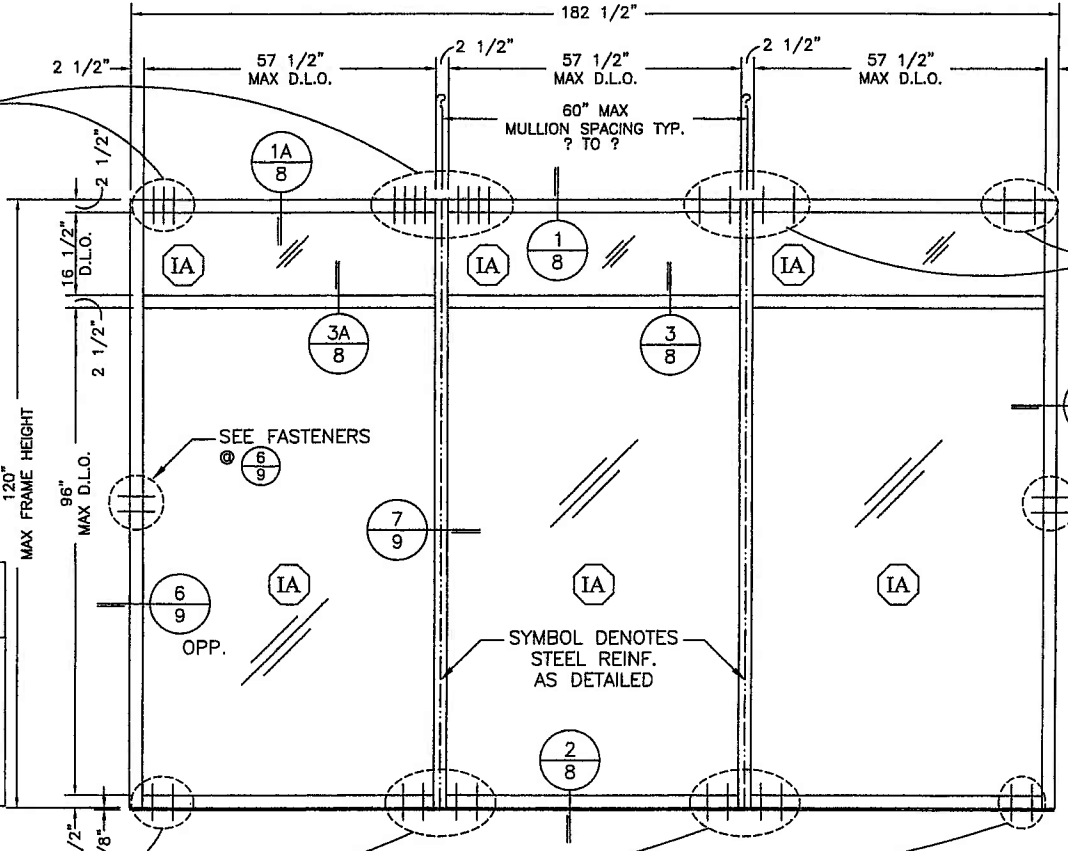
LOCATE (1) EA. 3" ABOVE AND BELOW MIDPOINT: 3/8" x 2-1/2" LONG LDT TYP. @ CONCRETE WITH 2" MIN. EMBEDMENT.

OR STEEL SUBSTRATE

LOCATE (1) EA. 1-1/2" ABOVE AND BELOW MIDPOINT: 3/8" -16 x 1-1/2" HWH TYPE "F" TCS TYP. @ STEEL 2" MIN. SPACING BETWEEN ANCHORS

OR WOOD SUBSTRATE

LOCATE (1) EA. @ MIDPOINT AND (2) EA. ABOVE AND BELOW MIDPOINT: 3/8" x 3-1/2" LONG LAG BOLTS TYP. @ WOOD. 3" MIN. EMBEDMENT, 2" MIN SPACING BETWEEN ANCHORS.



LEGEND

○ ○ EACH LINE REPRESENTS ONE FASTENER

TYPICAL ELEVATION LIGHT ALUM. MULLION WITH STEEL REINFORCEMENT-LONG SPAN

DESIGN PRESSURE = +70/-80 PSF

WATER TEST AT 15 PSF

AIR @ 6.24 P.S.F.

TYPICAL ATTACHMENT TO CONCRETE/STEEL/WOOD SUBSTRATE

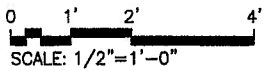
2500 P.S.I. CONCRETE

1/4" MIN. THICK STEEL

WOOD STRUCTURE: MIN. #2 SYP. SEE SHEET 16

Lewis A. Waldrop, P.E.
P. O. Box 620
Alto, GA 30510
706-778-3784

Lewis A. Waldrop
1/2/108



- NOTES:**
- GLASS SIZE=D.L.O. + 1-1/8"
 - HORIZONTAL MULLION (DETAIL 3/8 OR 3A/8) IS OPTIONAL IN ANY BAY
 - HEAD (DETAIL 1/8 OR 1A/8) IS OPTIONAL IN ANY BAY.

DISCREETION

| | |
|------|----|
| DATE | |
| REV | BT |

Coral
Architectural Products

3015 RICE MINE ROAD, TUSCALOOSA, AL 35408
PHONE: 800-772-7757 FAX: 800-645-0871

PRODUCT APPROVAL DRAWINGS
FL550 WINDOW WALL SYSTEM
PROTOCOLS: PA201/202/203

FRAMING ELEVATIONS

| | |
|-------------|----------|
| DATE | 1/8/2008 |
| DRAWN | PCJ |
| CHECKED | JDW |
| APPROVED | JDW |
| PROJECT NO. | |
| DRAWING NO. | FL550_03 |
| SHEET | 2 OF 16 |

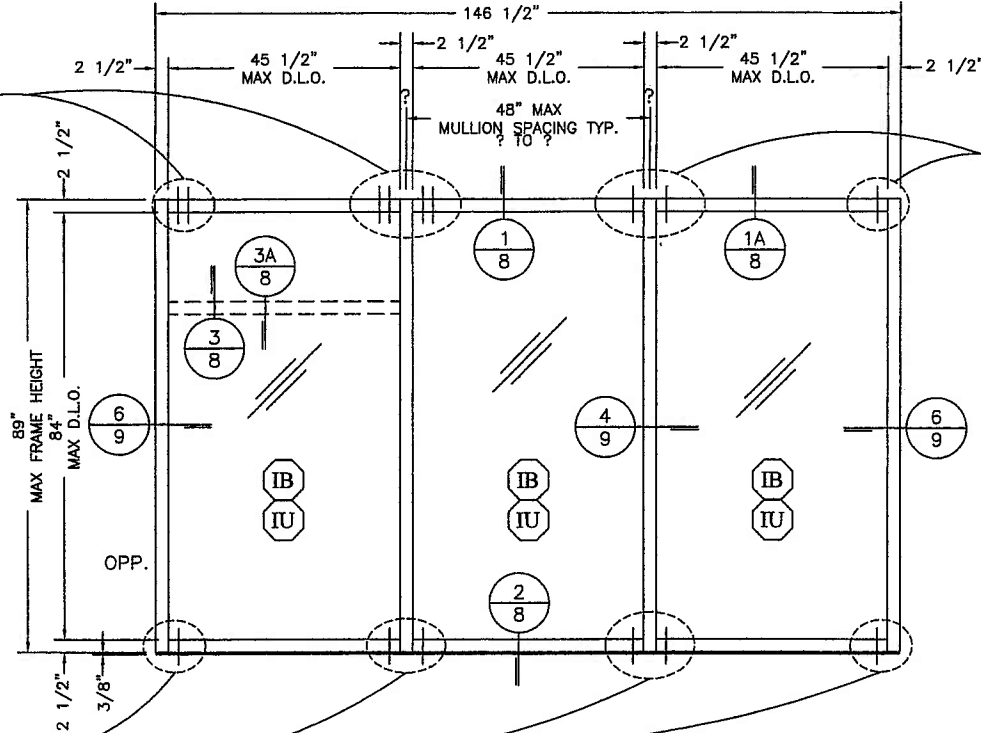
DRAWINGS FOR
DADE COUNTY
PRODUCT APPROVAL

**HEAD/SILL
@ WOOD SUBSTRATE**

3/8" x 3-1/2" LONG LAG BOLTS TYP. @ WOOD WITH 3" MIN. EMBEDMENT. LOCATE FIRST ANCHOR 2" FROM EDGE OF MULLION AND ADDITIONAL FASTENERS @ 2" MIN. SPACING BETWEEN ANCHORS.

**HEAD/SILL
@ STEEL SUBSTRATE**

3/8" -16 x 1-1/2" HWH TYPE "F" TCS TYP. @STEEL. LOCATE FIRST ANCHOR 2" FROM EDGE OF MULLION.

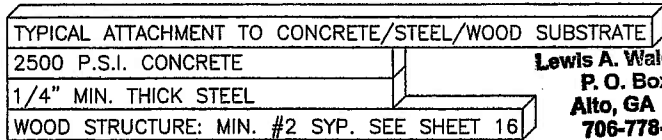
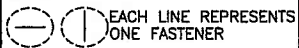


**SILL/HEAD
@ CONCRETE SUBSTRATE**

3/8" x 2-1/2" LONG LTD. TYPICAL @ CONCRETE WITH 2" EMBEDMENT. LOCATE FIRST ANCHOR 2" FROM EDGE OF MULLION.

**TYPICAL ELEVATION LIGHT ALUM. MULLION WITHOUT STEEL REINFORCEMENT
-SHORT SPAN-**

LEGEND



Lewis A. Waldrop, P.E.
P. O. Box 620
Alto, GA 30510
706-778-3784

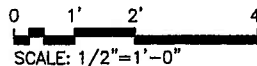
Lewis A. Waldrop, P.E.
FLA. P.E. #21959

Lewis A. Waldrop
2/21/08

DESIGN PRESSURE = +65/-65 PSF

NOTES:

- GLASS SIZE=D.L.O. + 1-1/8"
- HORIZONTAL MULLION (DETAIL 3/8 OR 3A/8) IS OPTIONAL IN ANY BAY
- HEAD (DETAIL 1/8 OR 1A/8) IS OPTIONAL IN ANY BAY.



PRODUCT APPROVAL DRAWINGS
FL550 WINDOW WALL SYSTEM
PROTOCOLS: PA201/202/203
FRAMING ELEVATIONS

| | |
|-----------------|----------------|
| DATE | 1/8/2008 |
| DRAWN PCH | CHECKED JDW |
| APPROVED JDW | |
| PROJECT NO. | |
| DRAWING NO. | FL550 03 |
| SHEET | 3 OF 16 |

DRAWINGS FOR
DADE COUNTY
PRODUCT APPROVAL

**HEAD/SILL
@ WOOD SUBSTRATE**

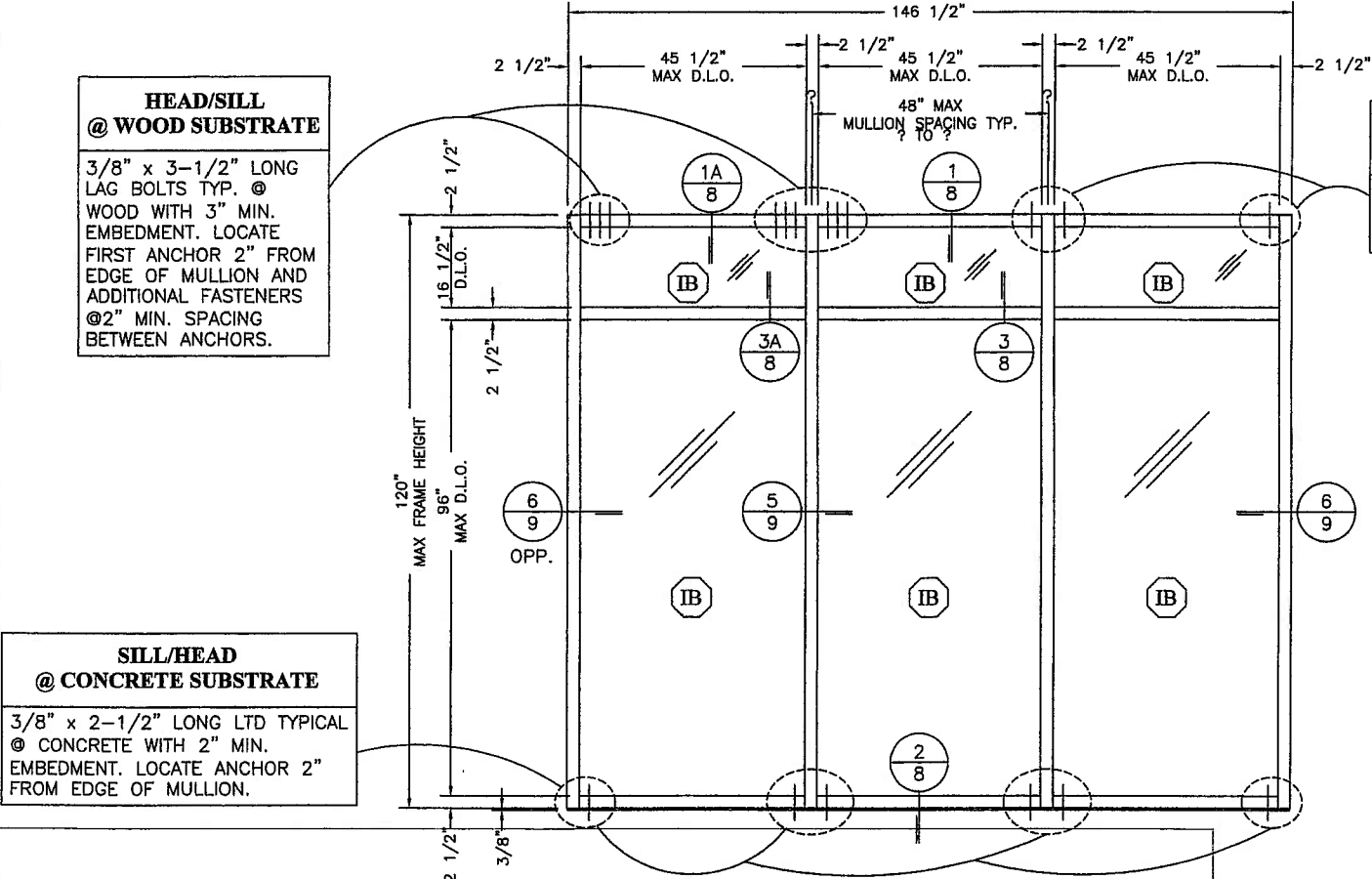
3/8" x 3-1/2" LONG LAG BOLTS TYP. @ WOOD WITH 3" MIN. EMBEDMENT. LOCATE FIRST ANCHOR 2" FROM EDGE OF MULLION AND ADDITIONAL FASTENERS @2" MIN. SPACING BETWEEN ANCHORS.

**HEAD/SILL
@ STEEL SUBSTRATE**

3/8" -16 x 1-1/2" HWH TYPE "F" TCS TYP. @ STEEL. LOCATE FIRST ANCHOR 2" FROM EDGE OF MULLION.

**SILL/HEAD
@ CONCRETE SUBSTRATE**

3/8" x 2-1/2" LONG LTD TYPICAL @ CONCRETE WITH 2" MIN. EMBEDMENT. LOCATE ANCHOR 2" FROM EDGE OF MULLION.



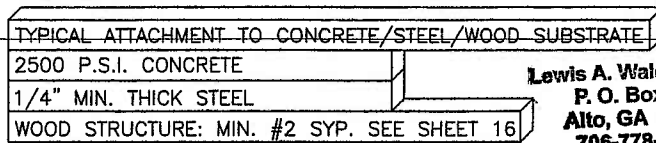
**TYPICAL ELEVATION HEAVY ALUM. MULLION WITHOUT STEEL
- LONG SPAN -**

LEGEND

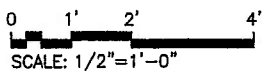
(○) EACH LINE REPRESENTS ONE FASTENER

DESIGN PRESSURE = +60/-60 PSF

- NOTES:**
1. GLASS SIZE=D.L.O. + 1-1/8"
 2. HORIZONTAL MULLION (DETAIL 3/8 OR 3A/8) IS OPTIONAL IN ANY BAY
 3. HEAD (DETAIL 1/8 OR 1A/8) IS OPTIONAL IN ANY BAY.



Lewis A. Waidrop, P.E.
P. O. Box 620
Alto, GA 30510
706-778-3784



Lewis A. Waidrop, P.E.
FLA. P.E. #21959

L. A. Waidrop
2/21/08

DRAWINGS FOR
DADE COUNTY
PRODUCT APPROVAL

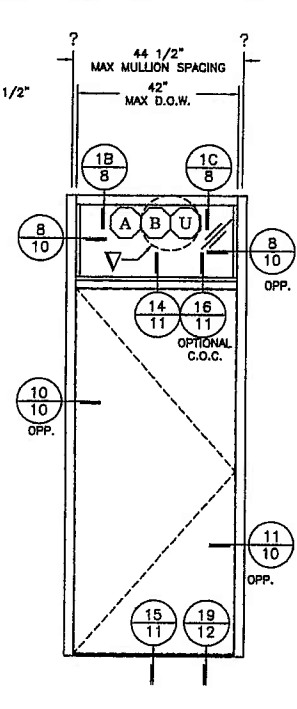
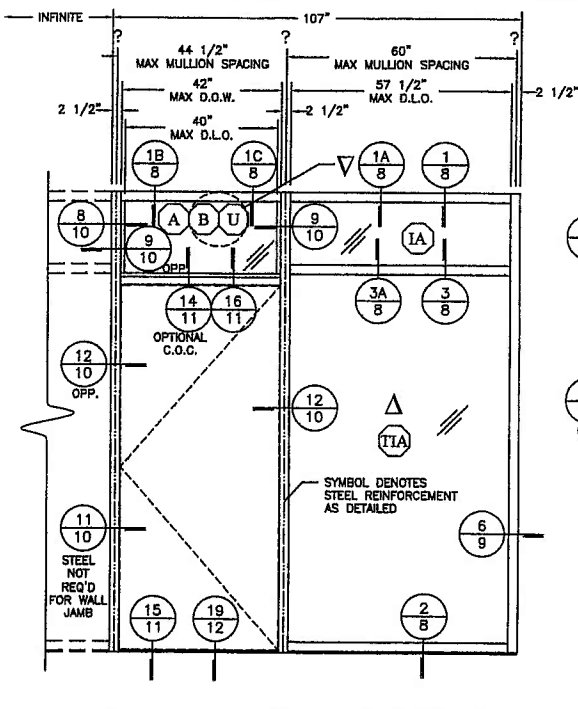
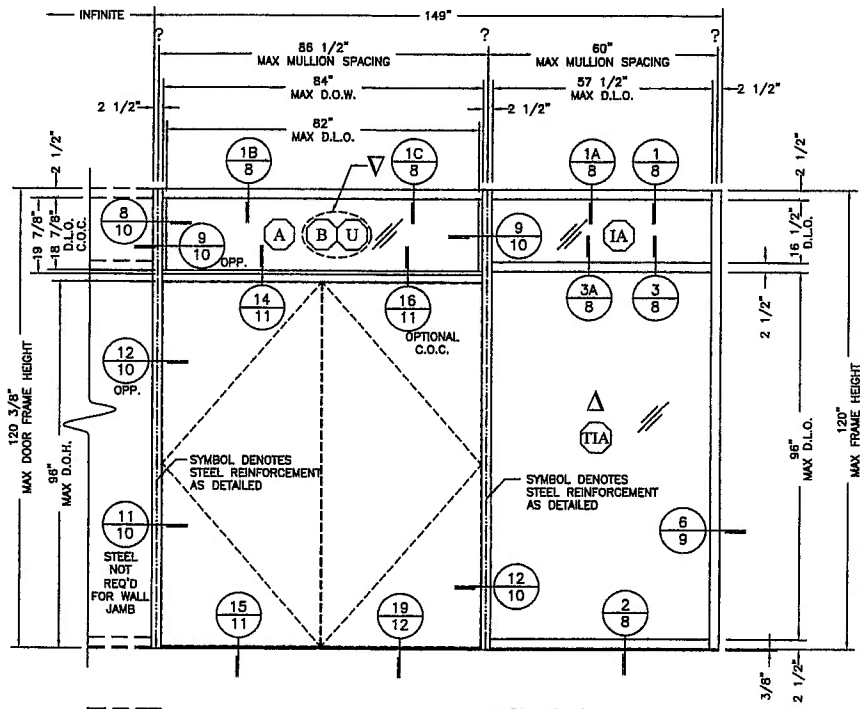
PRODUCT APPROVAL DRAWINGS
FL550 WINDOW WALL SYSTEM
PROTOCOLS: PA201/202/203

FRAMING ELEVATIONS

| | |
|--------------|-----------------|
| DATE | 1/8/2008 |
| DRAWN PCH | CHECKED JDW |
| PROJECT NO. | APPROVED JDW |
| DRAWING NO. | FL550_03 |
| SHEET | 4 OF 16 |

Coral
Architectural Products
3010 RICE MINE ROAD, TUSCALOOSA, AL 35408
PHONE 866-727-7272 FAX 866-661-6661

| REV | BY | DATE | DESCRIPTION |
|-----|----|------|-------------|
| | | | |
| | | | |
| | | | |
| | | | |

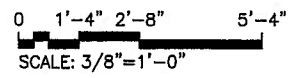


**TYPICAL ELEVATIONS FOR DOORFRAMES WITH A TRANSOM
- WITH OR WITHOUT A SIDE LIGHT-**

▽ SPECIAL NOTATION: TRANSOM GLASS TYPES
(B) & (U) ARE LIMITED TO +/-65 PSF
DESIGN PRESSURE = +70/-80 PSF

△ = OUTBOARD LITE OF INSULATED UNIT MUST BE TEMPERED AT SIDE LIGHT ADJACENT TO DOOR(S) TO MEET BUILDING SAFETY CODES

- NOTES:**
1. GLASS SIZE=D.L.O. + 1-1/8"
 2. SEE SHEETS 14-16 FOR PERIMETER FASTENER LOCATIONS
 3. HORIZONTAL MULLION (DETAIL 3/8 OR 3A/8) IS OPTIONAL IN ANY BAY.
 4. SERIES 381 AND 281 DOORS ARE SHOWN ON SEPARATE SUBMISSION.
 5. HEAD (DETAIL 1/8 OR 1A/8) IS OPTIONAL IN ANY BAY.



Lewis A. Waldrop, P.E.
P. O. Box 620
Alto, GA 30510
706-778-3784

Lewis A. Waldrop, P.E.
FLA. P.E. #21959

L. Waldrop
2/21/08

DRAWINGS FOR
DADE COUNTY
PRODUCT APPROVAL

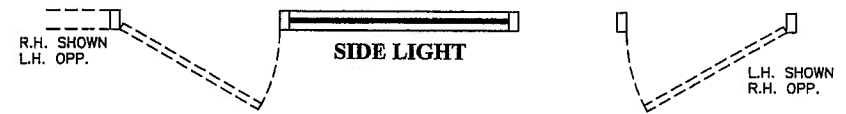
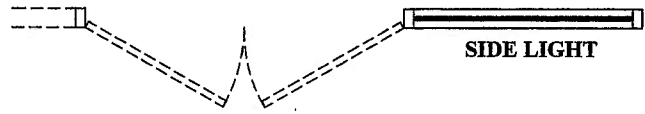
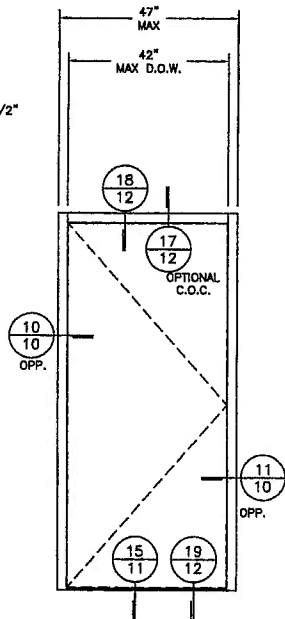
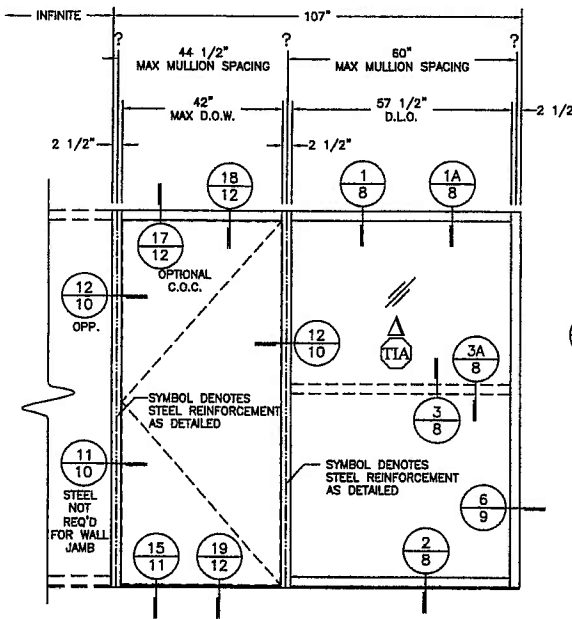
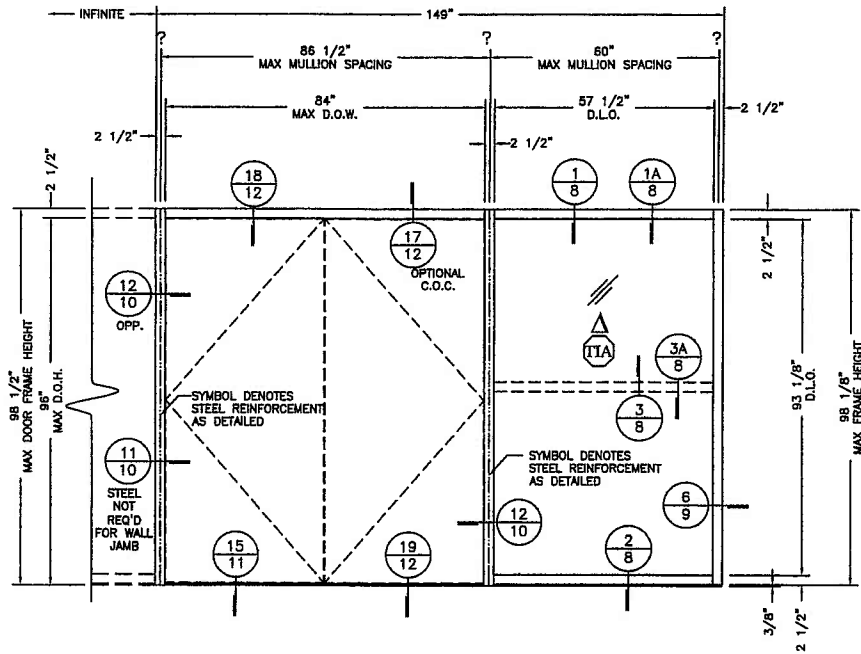
PRODUCT APPROVAL DRAWINGS
FL550 WINDOW WALL SYSTEM
PROTOCOLS: PA201/202/203
DOOR FRAMING ELEVATIONS

| | | | |
|-------------|----------|----------|--|
| DATE | 1/8/2008 | | |
| DRAWN | CHECKED | APPROVED | |
| Pch | JDW | JDW | |
| PROJECT NO. | | | |
| DRAWING NO. | FL550_03 | | |
| SHEET | 5 OF 16 | | |

Coral
Architectural Products

3010 RICE MIKE ROAD, TUSCALOOSA, AL 35408
PHONE: 800-772-7277 FAX: 205-443-9281

| NO. | DATE | REV | BY | DESCRIPTION |
|-----|------|-----|----|-------------|
| | | | | |
| | | | | |
| | | | | |



**TYPICAL ELEVATIONS FOR DOORFRAMES WITHOUT A TRANSOM
- WITH OR WITHOUT A SIDE LIGHT-**

△ = OUTBOARD LITE OF INSULATED UNIT MUST BE TEMPERED AT SIDE LIGHT ADJACENT TO DOOR(S) TO MEET BUILDING SAFETY CODES

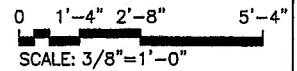
DESIGN PRESSURE = +70/-80 PSF

- NOTES:**
1. GLASS SIZE=D.L.O. + 1-1/8"
 2. SEE SHEETS 14-16 FOR PERIMETER FASTENER LOCATIONS
 3. HORIZONTAL MULLION (DETAIL 3/8 OR 3A/8) IS OPTIONAL IN ANY BAY.
 4. SERIES 381 AND 281 DOORS ARE SHOWN ON SEPARATE SEPARATE SUBMISSION.
 5. HEAD (DETAIL 1/8 OR 1A/8) IS OPTIONAL IN ANY BAY.

Lewis A. Waldrop, P.E.
P. O. Box 620
Aldo, GA 30510
706-778-3784

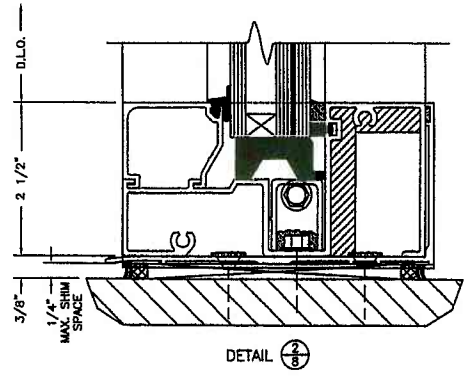
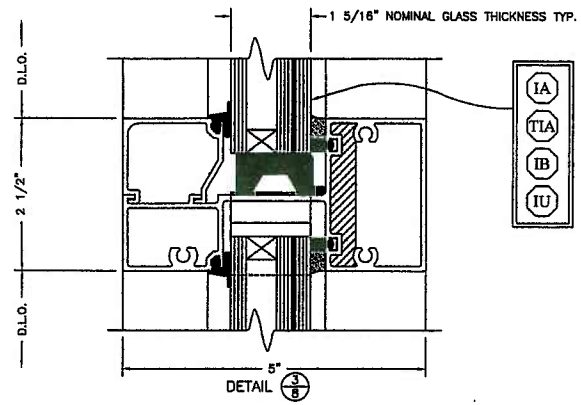
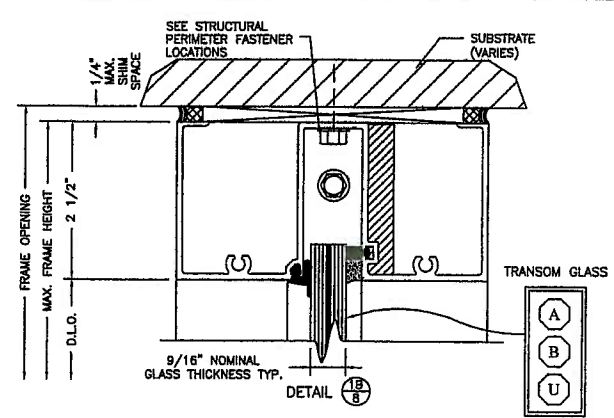
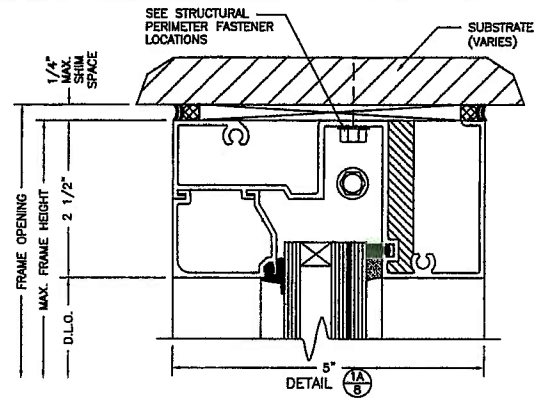
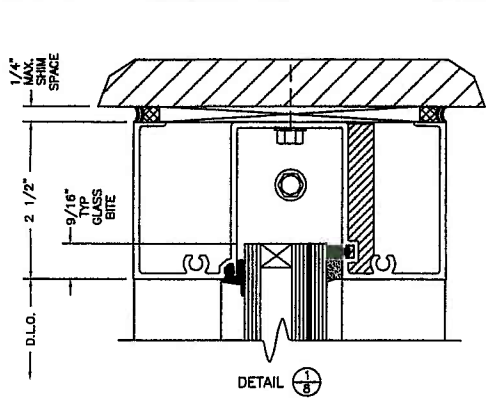
Lewis A. Waldrop, P.E.
FLA. P.E. #21959

Lewis A. Waldrop
2/21/08



DRAWINGS FOR
DADE COUNTY
PRODUCT APPROVAL

| | | | |
|--|--|--------------|-------------------------|
| | | DATE | 1/8/2008 |
| | | DRAWN RCH | CHECKED JDW |
| PRODUCT APPROVAL DRAWINGS FL550 WINDOW WALL SYSTEM PROTOCOLS: PA201/202/203 DOOR FRAMING ELEVATIONS | | APPROVED JDW | DRAWING NO. FL550 03 |
| | | PROJECT NO. | SHEET 6 OF 16 |



GLAZING SCHEDULE TYPICAL GLASS SIZE = DLO + 1 1/8"

| GLASS MARK | GLASS TYPE | MANUFACTURER | MAXIMUM DLO (INCHES) | MAXIMUM SQ FT |
|------------|--|------------------|----------------------|---------------|
| IA | 1 5/16" INSULATED -1/4" H.S. -1/2" AIR SPACER -1/4" H.S. - .075 VS02 SOLUTIA INTERLAYER -1/4" H.S. N.O.A. 03-0514.15 | SOLUTIA | 57 1/2 X 96 | 38.33 |
| TIA | 1 5/16" INSULATED -1/4" TEMPERED -1/2" AIR SPACER -1/4" H.S. - .075 VS02 SOLUTIA INTERLAYER -1/4" H.S. N.O.A. 03-0514.15 | SOLUTIA | 57 1/2 X 96 | 38.33 |
| IB | 1 5/16" INSULATED -1/4" H.S. -1/2" AIR SPACER -1/4" H.S. - .090 SAFLEX PVB INTERLAYER -1/4" H.S. N.O.A. 03-0105.02 | SOLUTIA | 57 1/2 X 96 | 38.33 |
| IU | 1 5/16" INSULATED -1/4" H.S. -1/2" AIR SPACER -1/4" H.S. - .120 TYPE "S" UVEKOL INTERLAYER -1/4" H.S. N.O.A. 03-1117.05 | CORAL INDUSTRIES | 45 1/2 X 84 | 26.54 |
| A | 9/16" LAMINATED -1/4" H.S. -.075 VS02 -1/4" H.S. USED @ DOOR FRAME TRANSOM | SOLUTIA | 82 X 31 3/8 | 17.87 |
| B | 9/16" LAMINATED -1/4" H.S. -.090 SAFLEX PVB -1/4" H.S. USED @ DOOR FRAME TRANSOM | SOLUTIA | 82 X 31 3/8 | 17.87 |
| U | 9/16" LAMINATED -1/4" H.S. -.120 UVEKOL -1/4" H.S. USED @ DOOR FRAME TRANSOM | CORAL INDUSTRIES | 82 X 31 3/8 | 17.87 |

Lewis A. Waldrop, P.E.
P. O. Box 620
Alto, GA 30510
706-778-3784

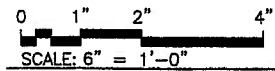
Lewis A. Waldrop, P.E.
FLA. P.E. #21959

Lewis Waldrop
2/11/08

NOTE: THE INTERIOR IS ON THE RIGHT OF VERTICAL SECTION CUTS UNLESS OTHERWISE NOTED

TYPICAL GLASS BITE IS 9/16" UNLESS OTHERWISE NOTED

| OPTIONS AND LIMITATIONS | | | | | |
|-------------------------|--------------------------------|-------------------|---------------------------|-----------------------------|----------------------|
| MAX DESIGN PRESSURE PSF | INTERM VERTICAL MULLION | WALL JAMB MULLION | MAX MULLION SPAN (INCHES) | MAX SPACING ? TO ? (INCHES) | QUALIFIED GLASS MARK |
| +65/-65 | FL554 W/O STEEL | FL551 | 89 | 48 | IA IB |
| +70/-80 | FL554 W/ STEEL | FL551 | 120 | 60 | IA TIA |
| +60/-60 | FL566 W/O STEEL | FL551 | 120 | 48 | IB |
| +70/-80 | TRANSOM LITE AT ENTRANCE DOORS | | 120 3/8 | 86 1/2 | A |
| +65/-65 | TRANSOM LITE AT ENTRANCE DOORS | | 120 3/8 | 86 1/2 | B U |



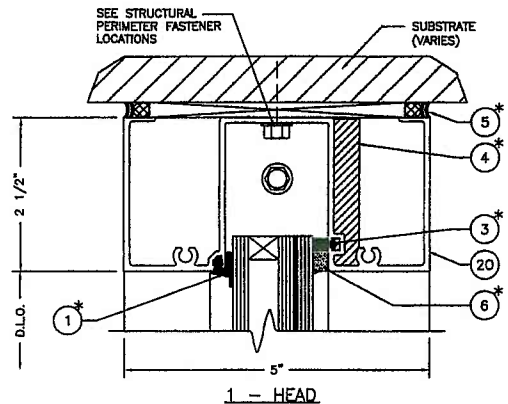
DESCRIPTION

| | |
|-----------------------------|--------------|
| DATE | 1/8/2008 |
| DRAWN Pch | CHECKED JDW |
| PROJECT NO. | APPROVED JDW |
| DRAWING NO. FL550_03 | |
| SHEET 7 OF 16 | |

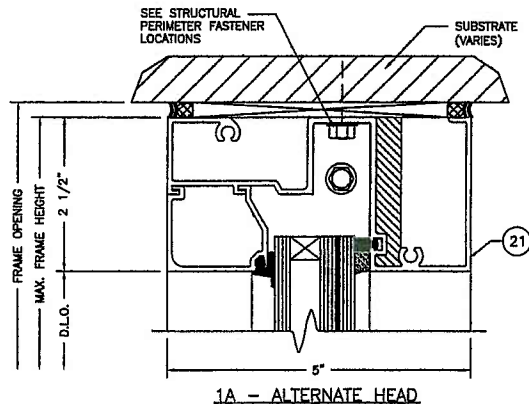
Coral
Architectural Products
3010 RICE MINE ROAD, TUSCALOOSA, AL 35408
PHONE: 800-772-7237 FAX: 800-645-5051

PRODUCT APPROVAL DRAWINGS
FL550 WINDOW WALL SYSTEM
PROTOCOLS: PA201/202/203
GLAZING SCHEDULE

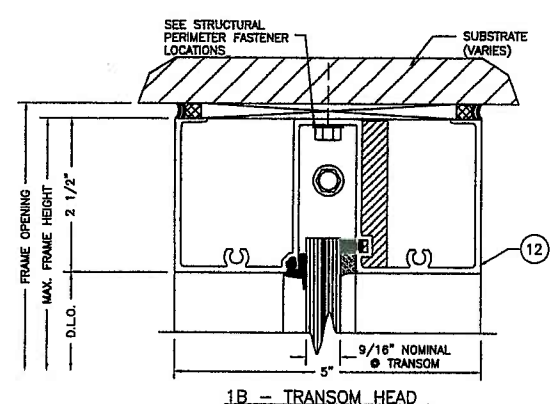
DRAWINGS FOR
DADE COUNTY
PRODUCT APPROVAL



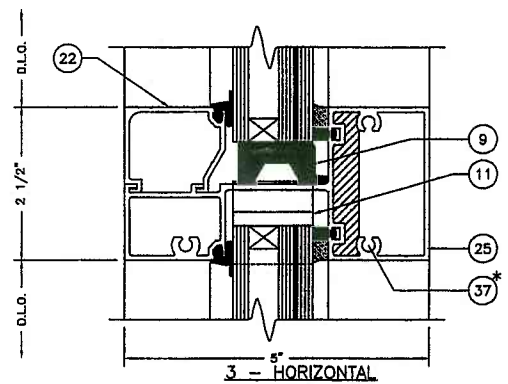
1 - HEAD



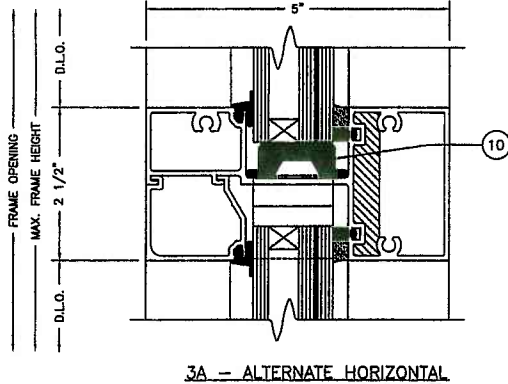
1A - ALTERNATE HEAD



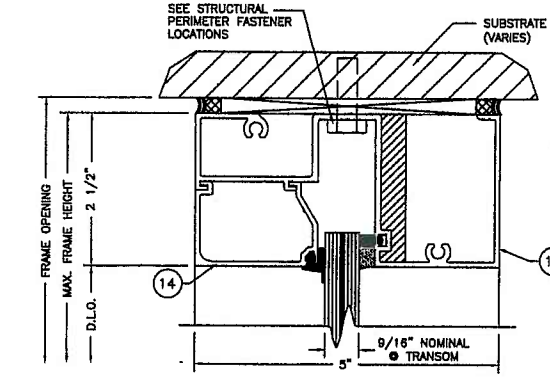
1B - TRANSOM HEAD



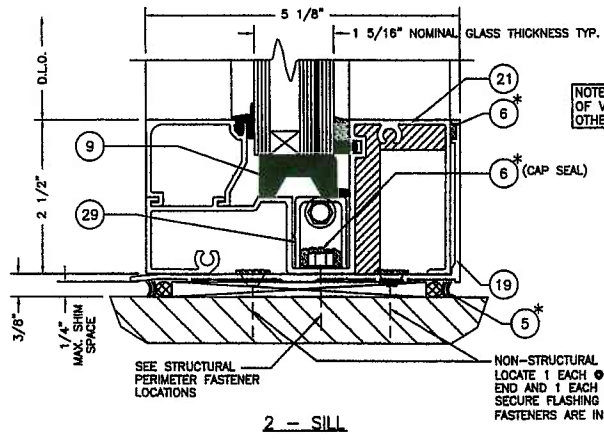
3 - HORIZONTAL



3A - ALTERNATE HORIZONTAL
(DETAIL 3 INVERTED)



1C - TRANSOM HEAD



2 - SILL

1/4" MAXIMUM SHIM SPACE TYPICAL AT PERIMETER UNLESS OTHERWISE NOTED

NOTE: THE INTERIOR IS ON THE RIGHT OF VERTICAL SECTION CUTS UNLESS OTHERWISE NOTED

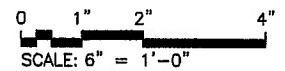
NON-STRUCTURAL FASTENERS LOCATE 1 EACH \odot 24" FROM EACH END AND 1 EACH \odot MID-POINT TO SECURE FLASHING UNTIL PERIMETER FASTENERS ARE INSTALLED. (CAP SEAL) \odot 6

- 1 * TYPICAL EXTERIOR GASKET
- 3 * TYPICAL INTERIOR SPACER GASKET
- 4 * TYPICAL \odot ALL JOINT INTERSECTIONS
- 5 * TYPICAL PERIMETER SEALANT
- 6 * TYPICAL INTERIOR SEALANT
- 37 * TYPICAL \odot ALL SPLINES

Lewis A. Waldrop, P.E.
P. O. Box 620
Alto, GA 30510
706-778-3784

Lewis A. Waldrop, P.E.
FLA. P.E. #21959

L. Waldrop
2/21/08



| NO. | DATE | REV. BY | DESCRIPTION |
|-----|------|---------|-------------|
| | | | |
| | | | |
| | | | |

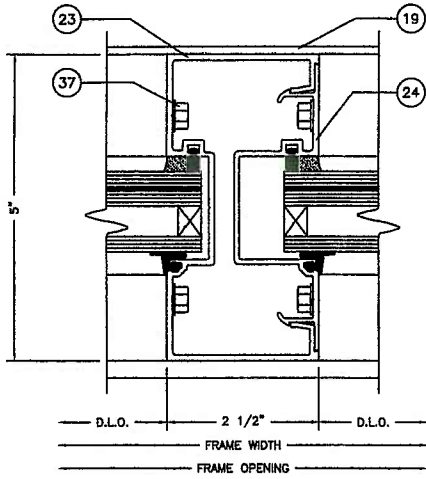
Coral
Architectural Products
3010 RICE WINE ROAD, TUSCALOOSA, AL 35408
PHONE: 800-775-7737 FAX: 800-445-0581

PRODUCT APPROVAL DRAWINGS
FL550 WINDOW WALL SYSTEM
PROTOCOLS: PA201/202/203

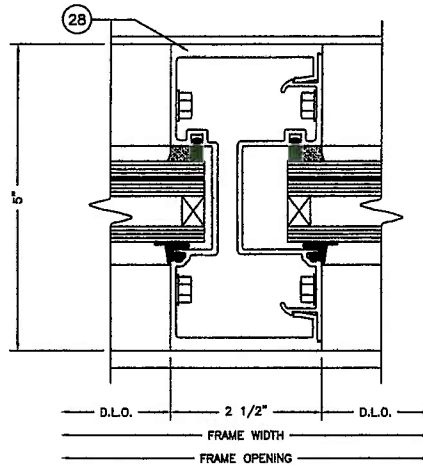
FRAMING DETAILS

| | |
|--------------|-------------|
| DATE | 1/8/2008 |
| DRAWN PCH | CHECKED JDW |
| APPROVED JDW | |
| PROJECT NO. | |
| DRAWING NO. | FL550_03 |
| SHEET | 8 OF 16 |

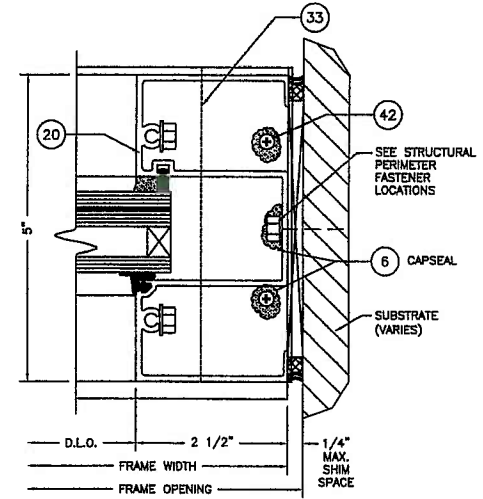
DRAWINGS FOR
DADE COUNTY
PRODUCT APPROVAL



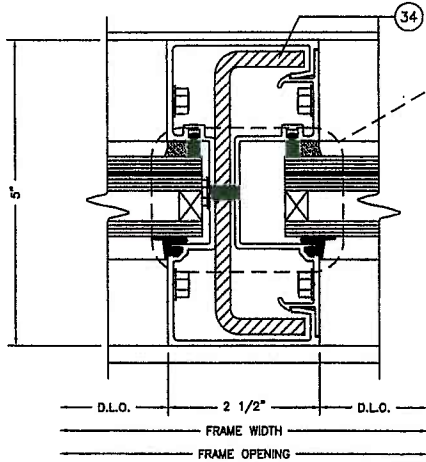
4 - LIGHT INTERM. VERTICAL



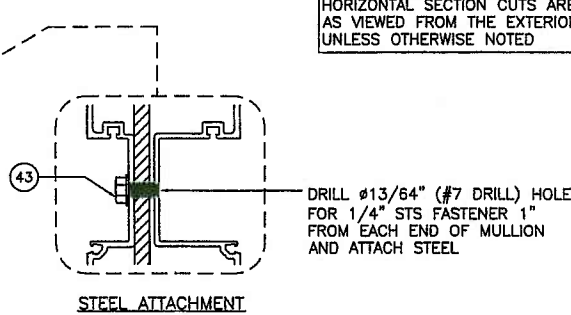
5 - HEAVY VERTICAL MULLION



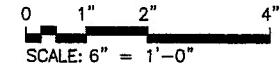
6 - WALL JAMB



7 - LIGHT INTERM. VERTICAL WITH STEEL



HORIZONTAL SECTION CUTS ARE AS VIEWED FROM THE EXTERIOR UNLESS OTHERWISE NOTED



Lewis A. Waidrop, P.E.
FLA. P.E. #21959

Lewis A. Waidrop
2/21/08

Lewis A. Waidrop, P.E.
P. O. Box 620
Alto, GA 30510
706-778-3784

DRAWINGS FOR
DADE COUNTY
PRODUCT APPROVAL

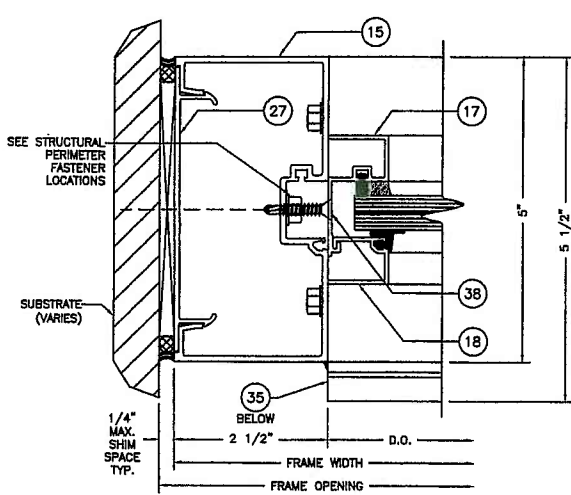
PRODUCT APPROVAL DRAWINGS
FL550 WINDOW WALL SYSTEM
PROTOCOLS: PA201/202/203

FRAMING DETAILS

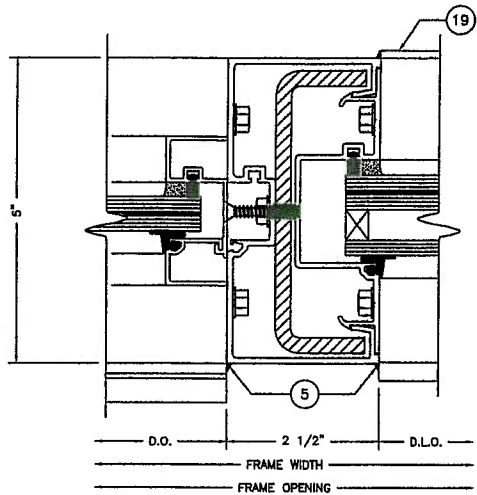
| | | | |
|-------------|----------|----------|--|
| DATE | 1/8/2008 | | |
| DRAWN | CHECKED | APPROVED | |
| PCH | JDW | JDW | |
| PROJECT NO. | | | |
| DRAWING NO. | FL550_03 | | |
| SHEET | 9 OF 16 | | |

Coral
Architectural Products
3010 RICE WINE ROAD, TUSCALOOSA, AL 35408
PHONE: 205/772-7757 FAX: 205/443-8051

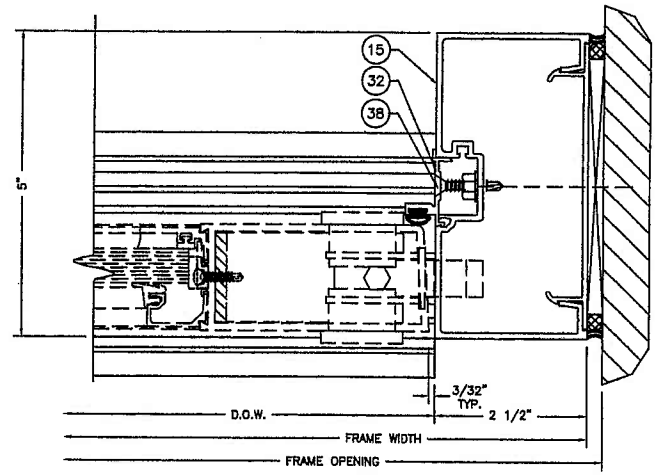
| | | | | |
|-----|-----|----|------|-------------|
| NO. | REV | BY | DATE | DESCRIPTION |
| | | | | |
| | | | | |
| | | | | |
| | | | | |



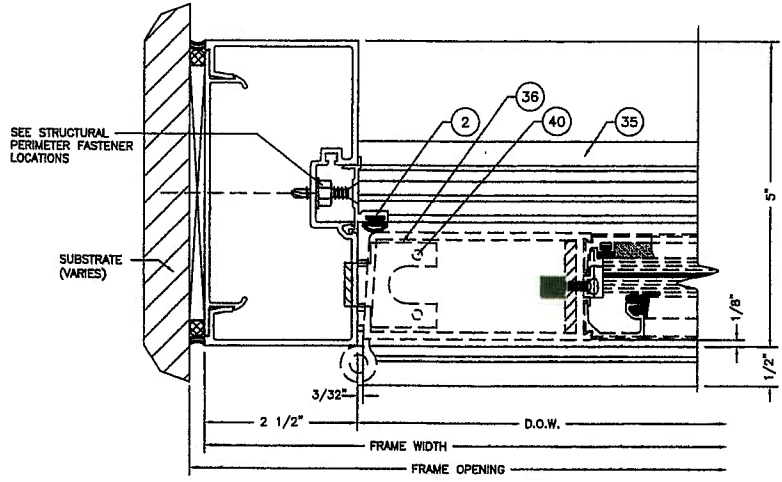
8 - TRANSOM DOORJAMB @ WALL



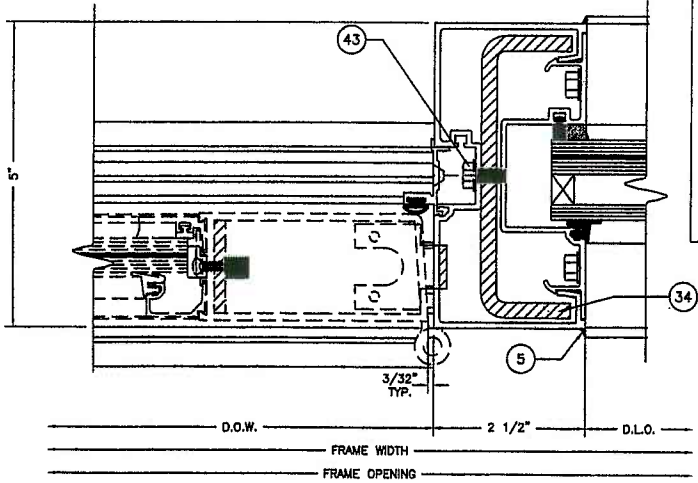
9 - TRANSOM DOORJAMB @ SIDE LIGHT



10 - DOORJAMB FOR LOCK @ WALL



11 - DOORJAMB @ WALL

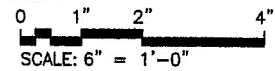


12 - DOORJAMB @ SIDE LIGHT

Lewis A. Waldrop, P.E.
P. O. Box 620
Alto, GA 30510
706-778-3784

Lewis A. Waldrop, P.E.
FLA. P.E. #21959

Lewis A. Waldrop
2/21/09



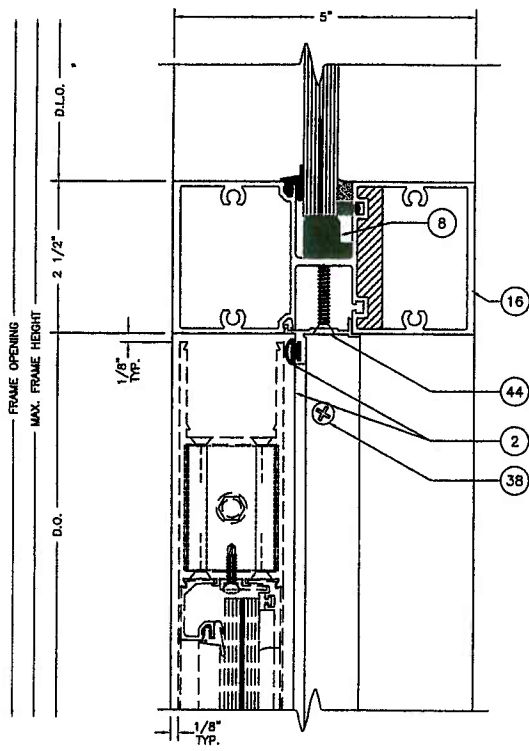
DRAWINGS FOR
DADE COUNTY
PRODUCT APPROVAL

Coral
Architectural Products
3010 RICE MIANE ROAD, TUSCALOOSA, AL 35408
PHONE: 800-772-7737 FAX: 800-645-5081

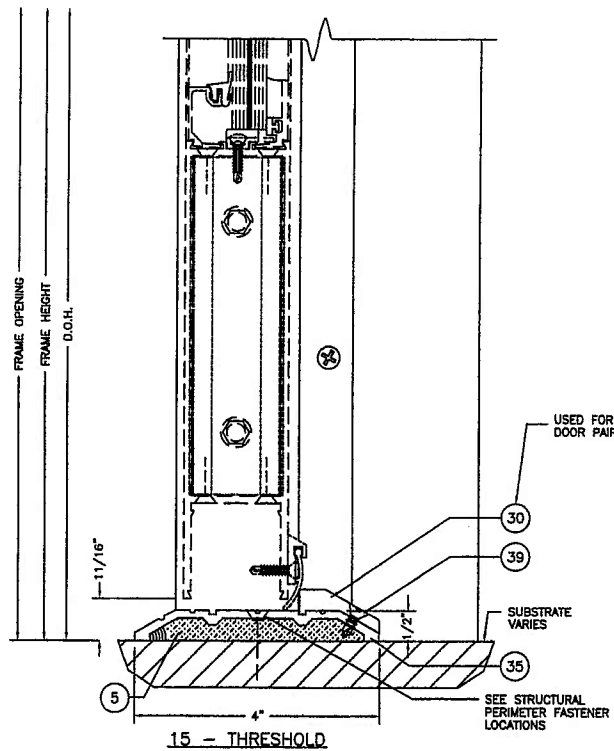
PRODUCT APPROVAL DRAWINGS
FL550 WINDOW WALL SYSTEM
PROTOCOLS: PA201/202/203
FRAMING DETAILS

| | |
|-------------|----------|
| DATE | 1/8/2008 |
| DRAWN | Perl |
| CHECKED | JDW |
| APPROVED | JDW |
| PROJECT NO. | |
| DRAWING NO. | FL550 03 |
| SHEET | 10 OF 16 |

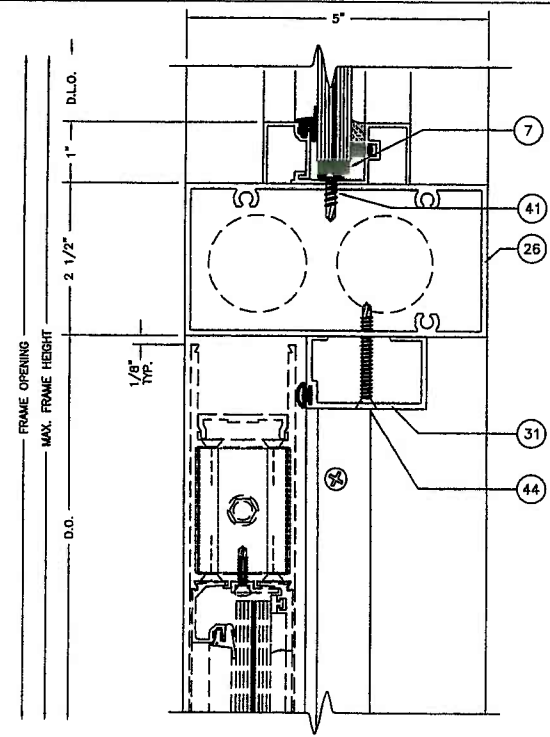
| REV | BY | DATE | DESCRIPTION |
|-----|----|------|-------------|
| | | | |



14 - TRANSOM BAR FOR S.A.C.

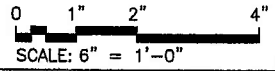


15 - THRESHOLD



16 - TRANSOM BAR WITH C.O.C. FOR OFFSET ARM

Lewis A. Waldrop, P.E.
 P. O. Box 620
 Alto, GA 30510
 706-778-3784



Lewis A. Waldrop, P.E.
 FLA. P.E. #21959

Lewis A. Waldrop
 2/21/08

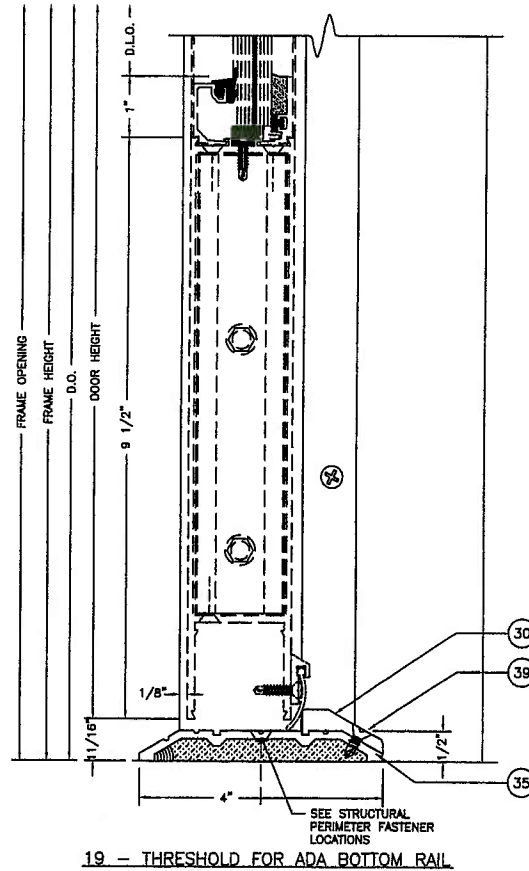
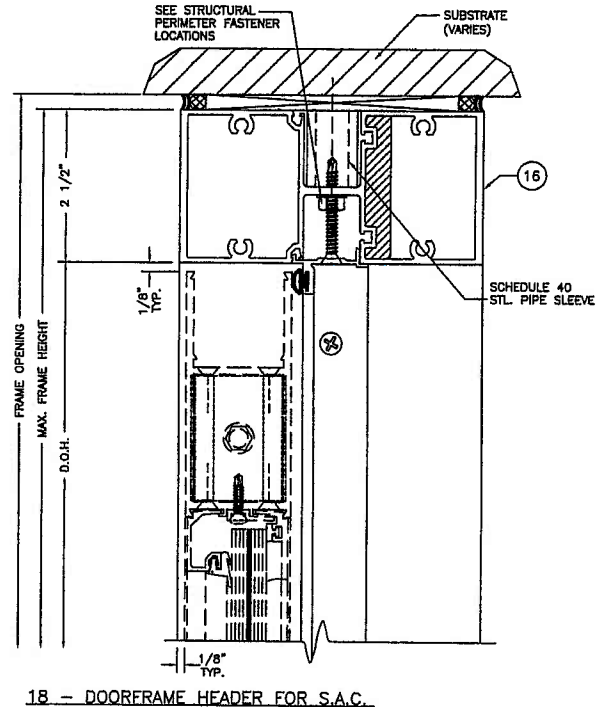
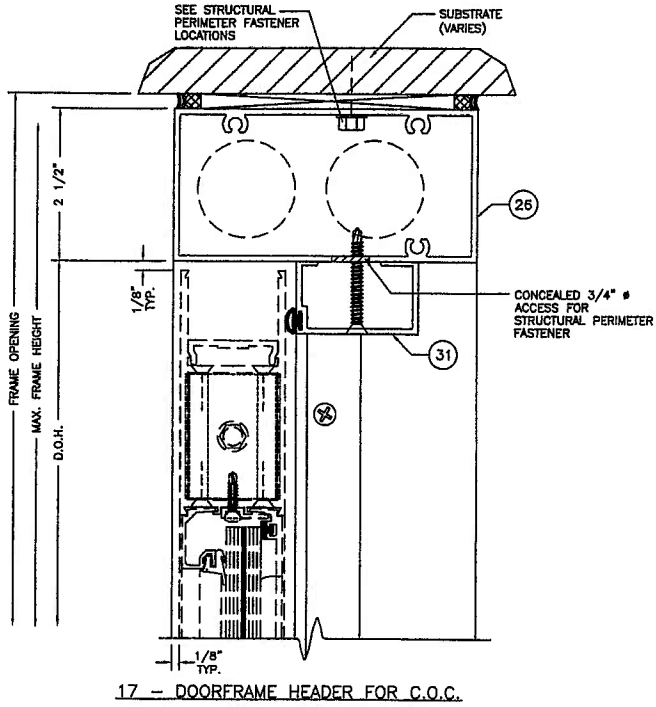
| REV | BY | DATE | DESCRIPTION |
|-----|----|------|-------------|
| | | | |
| | | | |
| | | | |
| | | | |

Coral
 Architectural Products
 3010 RICE WINE ROAD, TUSCALOOSA, AL 35408
 PHONE: 800-778-1737 FAX: 800-443-6871

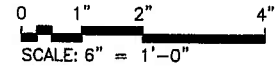
PRODUCT APPROVAL DRAWINGS
 FL550 WINDOW WALL SYSTEM
 PROTOCOLS: PA201/202/203
 FRAMING DETAILS

| | |
|-------------|----------|
| DATE | 1/8/2008 |
| DRAWN | PCH |
| CHECKED | JDW |
| APPROVED | JDW |
| PROJECT NO. | |
| DRAWING NO. | FL550_03 |
| SHEET | 11 OF 16 |

DRAWINGS FOR
 DADE COUNTY
 PRODUCT APPROVAL



Lewis A. Waldrop, P.E.
 P. O. Box 620
 Alto, GA 30510
 706-778-3784



Lewis A. Waldrop, P.E.
 FLA. P.E. #21959

Lewis Waldrop
 2/21/08

DRAWINGS FOR
 DADE COUNTY
 PRODUCT APPROVAL

PRODUCT APPROVAL DRAWINGS
 FL550 WINDOW WALL SYSTEM
 PROTOCOLS: PA201/202/203

FRAMING DETAILS

| | | | |
|-------------|----------|---------|----------|
| DATE | 1/8/2008 | | |
| DRAWN | CHECKED | CHECKED | APPROVED |
| FCH | JDW | JDW | JDW |
| PROJECT NO. | | | |
| DRAWING NO. | FL550 03 | | |
| SHEET | 12 OF 16 | | |

Coral
 Architectural Products
 3916 DICKENS ROAD, TUSCUMPHAWA, FL 32003
 PHONE: 800-772-7701 FAX: 904-443-0201

| REV | BY | DATE | DESCRIPTION |
|-----|----|------|-------------|
| | | | |

BILL OF MATERIALS

| ITEM NO. | P/N | DESCRIPTION | DIMENSIONS | MATERIAL | MANUFACTURER | NOTES |
|----------|---------|--|-------------------------|--------------------------|------------------------|--|
| 1 | NG1 | EXTERIOR GLAZING GASKET | 0.120 SPACE | EPDM | VARIES | |
| 2 | NG5 | BULB GASKET FOR (3) | 0.260 SPACE | EPDM | VARIES | |
| 3 | NG14 | INTERIOR SPACER GASKET | 0.250 SPACE | EPDM | VARIES | |
| 4 | SM5601 | JOINT SEALANT TAPE | 0.500 X 0.125 X VARIES | BUTYL | SCHNEE-MOOREHEAD | |
| 5 | 795 | SILICONE - PERIMETER SEALANT | FILL SPACE | SILICONE | DOW CORNING | USED @ PERIMETER |
| 6 | 995 | SILICONE - GLASS TO METAL | FILL SPACE | SILICONE | DOW CORNING | GLASS TO METAL AND INTERNAL |
| 7 | SB11 | SETTING BLOCK @ TRANSOM SASH | 0.313 X 1.250 X 4.000 | EPDM | VARIES | 2 PER LITE |
| 8 | SB13 | SETTING BLOCK @ TRANSOM BAR | 0.313 X 1.250 X 4.000 | EPDM | VARIES | 2 PER LITE |
| 9 | SB15 | SETTING BLOCK @ SILL & HORIZONTAL | 0.687 X 1.468 X 4.000 | EPDM | VARIES | 2 PER LITE |
| 10 | SB16 | SETTING BLOCK @ INVERTED HORIZONTAL | 0.588 X 1.671 X 4.000 | EPDM | VARIES | 2 PER LITE |
| 11 | WD300-1 | WATER DIVERTER | 1.358 X 1.344 X 4.000 | INJECTION MOLDED PLASTIC | CORAL INDUSTRIES, INC. | @ EACH END OF HORIZONTAL |
| 12 | FL501 | HEAD OR WALL JAMB | 2.500 X 5.000 X 0.094 | 6063-T6 ALUMINUM | CORAL INDUSTRIES, INC. | |
| 13 | FL502 | SILL OR HEAD | 2.500 X 4.980 X 0.094 | 6063-T6 ALUMINUM | CORAL INDUSTRIES, INC. | |
| 14 | FL503 | GLASS STOP | 1.250 X 2.021 X 0.078 | 6063-T6 ALUMINUM | CORAL INDUSTRIES, INC. | |
| 15 | FL504 | DOORJAMB | 2.500 X 5.000 X 0.094 | 6063-T6 ALUMINUM | CORAL INDUSTRIES, INC. | |
| 16 | FL507 | DOOR HEADER FOR S.A.C. | 2.500 X 4.980 X 0.080 | 6063-T6 ALUMINUM | CORAL INDUSTRIES, INC. | |
| 17 | FL517 | TRANSOM SASH | 1.000 X 1.981 X 0.062 | 6063-T6 ALUMINUM | CORAL INDUSTRIES, INC. | |
| 18 | FL518 | TRANSOM GLASS STOP | 1.000 X 0.767 X 0.062 | 6063-T6 ALUMINUM | CORAL INDUSTRIES, INC. | |
| 19 | FL519 | SUBSILL FLASHING | 2.620 X 5.402 X 0.084 | 6063-T6 ALUMINUM | CORAL INDUSTRIES, INC. | |
| 20 | FL551 | HEAD OR WALL JAMB | 2.500 X 5.000 X 0.094 | 6063-T6 ALUMINUM | CORAL INDUSTRIES, INC. | |
| 21 | FL552 | SILL OR HEAD | 2.500 X 4.980 X 0.094 | 6063-T6 ALUMINUM | CORAL INDUSTRIES, INC. | |
| 22 | FL553 | GLASS STOP | 1.250 X 1.646 X 0.078 | 6063-T6 ALUMINUM | CORAL INDUSTRIES, INC. | |
| 23 | FL554 | STD. VERTICAL MULLION | 2.500 X 5.000 X 0.094 | 6063-T6 ALUMINUM | CORAL INDUSTRIES, INC. | |
| 24 | FL555 | OPEN BACK MULLION FILLER | 0.681 X 4.670 X 0.080 | 6063-T6 ALUMINUM | CORAL INDUSTRIES, INC. | |
| 25 | FL556 | INTERMEDIATE HORIZONTAL | 2.500 X 4.980 X 0.094 | 6063-T6 ALUMINUM | CORAL INDUSTRIES, INC. | |
| 26 | FL562 | DOOR HEADER FOR C.O.C. | 2.500 X 5.000 X 0.125 | 6063-T6 ALUMINUM | CORAL INDUSTRIES, INC. | |
| 27 | FL515 | FLAT FILLER @ DOORJAMB | 0.681 X 4.670 X 0.080 | 6063-T6 ALUMINUM | CORAL INDUSTRIES, INC. | RUNS FULL LENGTH OF DOOR JAMB @ WALL |
| 28 | FL566 | HEAVY VERTICAL MULLION | 2.500 X 5.000 X 0.213 | 6063-T6 ALUMINUM | CORAL INDUSTRIES, INC. | |
| 29 | CS500-1 | SETTING CHAIR | 1.158 X 0.844 X 0.078 | 6063-T6 ALUMINUM | CORAL INDUSTRIES, INC. | |
| 30 | DP200-1 | PANIC DOOR STOP @ PAIRS | 0.402 X 1.323 X 0.188 | 6063-T6 ALUMINUM | CORAL INDUSTRIES, INC. | |
| 31 | DS202-1 | DOORFRAME - OFFSET ARM COVER | 1.188 X 2.000 X 0.090 | 6063-T6 ALUMINUM | CORAL INDUSTRIES, INC. | |
| 32 | DS500 | DOORSTOP | 0.648 X 1.260 X 0.094 | 6063-T6 ALUMINUM | CORAL INDUSTRIES, INC. | |
| 33 | ED519-1 | SILL FLASHING END DAM | 2.500 X 1.000 X 0.062 | 6063-T6 ALUMINUM | CORAL INDUSTRIES, INC. | |
| 34 | SR504 | STEEL REINFORCEMENT | 4.562 X 1.250 X 0.250 | A36 STEEL | VARIES | STEEL REINFORCEMENT FOR (23) |
| 35 | TH4 | THRESHOLD | 0.500 X 4.000 X 0.125 | 6063-T6 ALUMINUM | CORAL INDUSTRIES, INC. | |
| 36 | TH403 | THRESHOLD CLIP | 1.900 X 1.383 X 0.125 | STEEL | VARIES | |
| 37 | AS16 | FASTENER | #14 X 1" HHSTS | STEEL | VARIES | TYP. SPLINE SCREW VERTICAL/HORIZONTAL JOINTS |
| 38 | AS18 | FASTENER | #10 X 1-1/4" FHP | S. STEEL | VARIES | ATTACH (3) TO (23) |
| 39 | AS20 | FASTENER | #10-16 X 1/2" FHP | STEEL | VARIES | ATTACH (5) TO (3) |
| 40 | AS24 | FASTENER | #10-24 X 3/8" FHP | STEEL | VARIES | ATTACH (3) TO (34) |
| 41 | AS25 | FASTENER | #12 X 3/4" HWH | STEEL | VARIES | ATTACH (2) TO (2) |
| 42 | AS21 | FASTENER | #6 X 1/4" PPH | STEEL | VARIES | ATTACH (3) TO (1) |
| 43 | AS38 | FASTENER | #10-24 X 3/8" HH | STEEL | VARIES | ATTACH (3) TO (23) |
| 44 | AS39 | FASTENER | #10 X 1-3/4" FHP S.D. | S. STEEL | VARIES | ATTACH (2) TO (1) |
| 45 | | FASTENER FOR ANCHORING (1) TO WOOD SUBSTRATE | #12 X 2" FHP WOOD SCREW | STEEL | VARIES | NON-STRUCTURAL |
| 46 | | FASTENER FOR ANCHORING (1) TO STEEL SUBSTRATE | #12 X 1-1/2" FHP TEK | STEEL | VARIES | NON-STRUCTURAL |
| 47 | | FASTENER FOR ANCHORING (1) TO CONCRETE SUBSTRATE | #12 X 2" FHP TAPCON | STEEL | VARIES | NON-STRUCTURAL |

Lewis A. Waldrop, P.E.
 P. O. Box 620
 Alto, GA 30510
 706-778-3784

Lewis A. Waldrop, P.E.
FLA. P.E. #21959

Lewis A. Waldrop
 2/11/08

DRAWINGS FOR
 DADE COUNTY
 PRODUCT APPROVAL

| | |
|--|--|
| | <p style="font-size: small;"> 3010 RICE MIAMI ROAD, TUSCALOOSA, AL 35408 PHONE: 900-772-7787 FAX: 900-443-0881 </p> |
| <p style="font-size: x-small;">DATE</p> <p style="font-size: x-small;">DRAWN PCH</p> <p style="font-size: x-small;">CHECKED JDW</p> <p style="font-size: x-small;">APPROVED JDW</p> <p style="font-size: x-small;">PROJECT NO.</p> | <p style="font-size: x-small;">DATE</p> <p style="font-size: x-small;">DRAWN PCH</p> <p style="font-size: x-small;">CHECKED JDW</p> <p style="font-size: x-small;">APPROVED JDW</p> <p style="font-size: x-small;">PROJECT NO.</p> |
| <p style="font-size: x-small;">DRAWING NO.</p> <p style="font-size: x-small;">SHEET</p> | <p style="font-size: x-small;">DATE</p> <p style="font-size: x-small;">DRAWING NO.</p> <p style="font-size: x-small;">SHEET</p> |

PRODUCT APPROVAL DRAWINGS
 FL550 WINDOW WALL SYSTEM

BILL OF MATERIALS

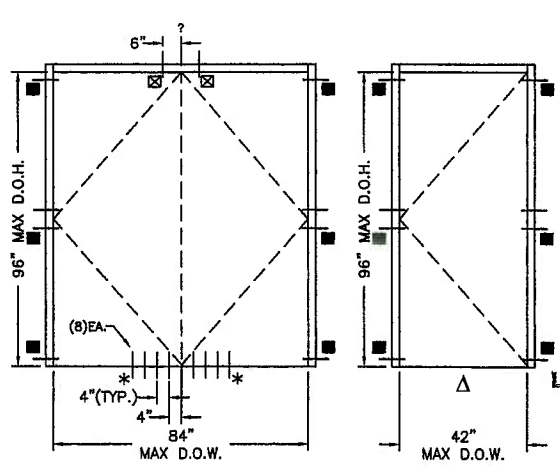
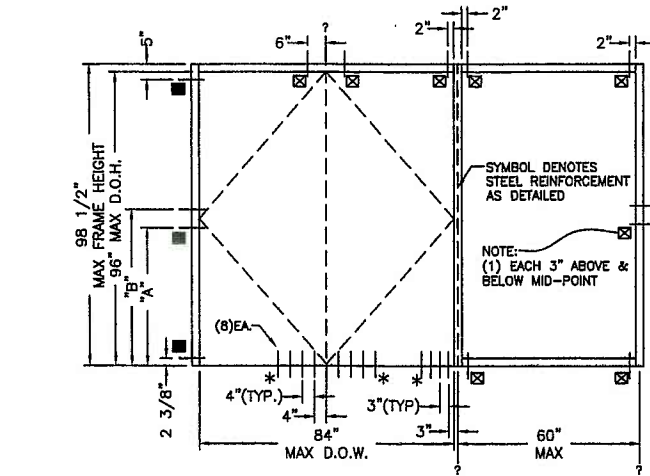
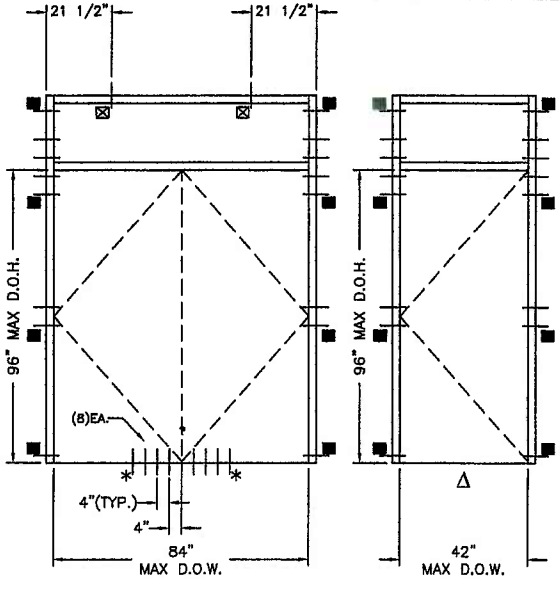
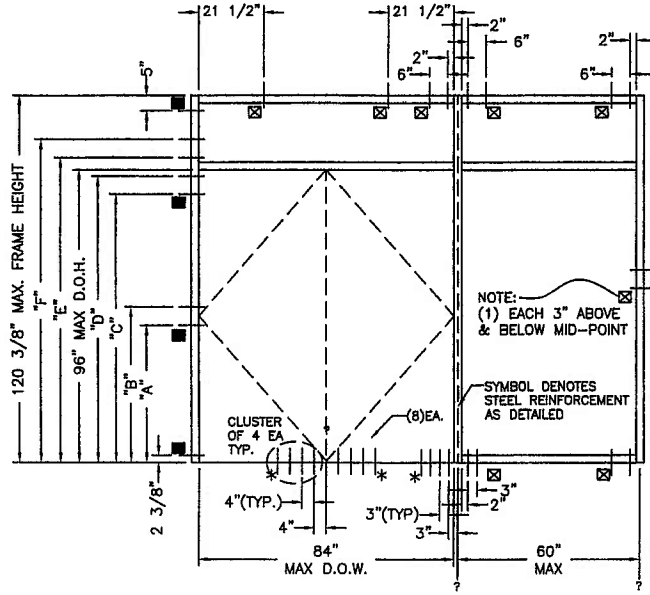
DATE 1/8/2008
 DRAWING NO. FL550 03
 SHEET 13 OF 16

PERIMETER FASTENER LOCATIONS

TYPICAL INSTALLATION INTO:
CONCRETE SUBSTRATE MIN. 2,500 P.S.I.

| DOOR OPENING HEIGHT | ANCHOR LOCATIONS | | | | | |
|---------------------|------------------|-----|-----|-----|------|------|
| | "A" | "B" | "C" | "D" | "E" | "F" |
| 84" | 45" | 51" | 76" | 82" | 89" | 95" |
| 96" | 45" | 51" | 88" | 94" | 100" | 106" |

| TYP. INSTALLATION INTO: 2,500 PSI CONCRETE SUBSTRATE | |
|--|---|
| ■ | 3/8" X 4-1/2" LDT, 2" MIN. EMBEDMENT WITH FILLER PLATE FULL LENGTH OF MULLION |
| ☒ | 3/8" X 2-1/2" LDT, 2" MIN. EMBEDMENT |
| * | 1/4" X 2-1/2" PFH TAPCON, 1-3/4" MIN. EMBEDMENT |
| 6" MIN. SPACING @ 3/8" TAPCON | |
| 3" MIN. SPACING @ 1/4" TAPCON | |



NOTES:
 Δ = STRUCTURAL FASTENERS NOT REQUIRED AT THRESHOLD.
 LEGEND
 ○ ○ EACH LINE REPRESENTS ONE FASTENER
 MAXIMUM DESIGN PRESSURE +70/-80 PSF

Lewis A. Waldrop, P.E.
 FLA. P.E. #21959
Lewis A. Waldrop
 2/21/08

Lewis A. Waldrop, P.E.
 P. O. Box 620
 Alto, GA 30510
 706-778-3784

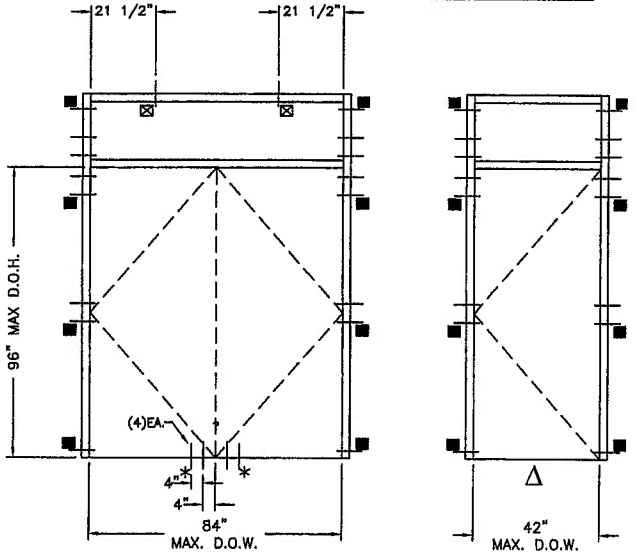
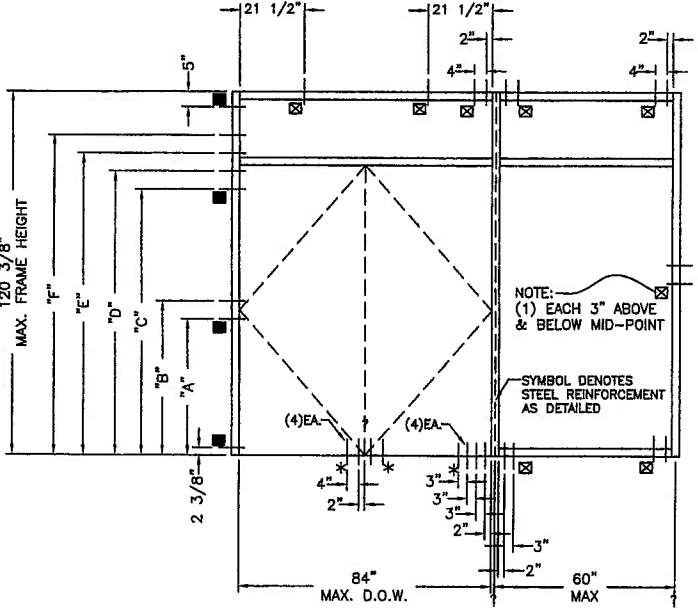
| | |
|---|----------|
| | |
| PRODUCT APPROVAL DRAWINGS FL550 WINDOW WALL SYSTEM DOORFRAMES PERIMETER FASTENER LOCATIONS | |
| DATE | 1/8/2008 |
| DRAWN | JMW |
| CHECKED | JMW |
| APPROVED | JMW |
| PROJECT NO. | |
| DRAWING NO. | FL550_03 |
| SHEET | 14 OF 16 |

PERIMETER FASTENER LOCATIONS

TYPICAL INSTALLATION INTO:
1/4" MIN. THICK STEEL SUBSTRATE

| DOOR OPENING HEIGHT | | ANCHOR LOCATIONS FOR "LETTER" DIM. | | | | | |
|---------------------|--|------------------------------------|-----|-----|-----|------|------|
| | | "A" | "B" | "C" | "D" | "E" | "F" |
| 84" | | 45" | 51" | 76" | 82" | 89" | 95" |
| 96" | | 45" | 51" | 88" | 94" | 100" | 106" |

| | |
|-------------------------------------|--|
| TYP. INSTALLATION INTO: | |
| STEEL SUBSTRATE | |
| <input type="checkbox"/> | 3/8"-16 X 3 1/2" HWH TYPE "F" TCS |
| <input type="checkbox"/> | FILLER PLATE FULL LENGTH OF MULLION |
| <input checked="" type="checkbox"/> | 3/8"-16 X 1 1/2" HWH TYPE "F" TCS SCREW |
| * | 1/4"-12 X 1 1/2" PFH #3 TEK SCREW 2" MIN SPACING |



NOTES:
 △ = STRUCTURAL FASTENERS NOT REQUIRED AT THRESHOLD.

LEGEND
 (⊖) (⊕) EACH LINE REPRESENTS ONE FASTENER

MAXIMUM DESIGN PRESSURE
 +70/-80 PSF

Lewis A. Waldrop, P.E.
 FLA. P.E. #21959

Lewis A. Waldrop
 1/1/08

Lewis A. Waldrop, P.E.
 P. O. Box 620
 ALTO, GA 30510
 706-778-3784

PRODUCT APPROVAL DRAWINGS
 FL550 WINDOW WALL SYSTEM
 DOORFRAMES
 PERIMETER FASTENER LOCATIONS

| | | | | | |
|-------------|----------|---------|-----|----------|-----|
| DATE | 1/8/2008 | | | | |
| DRAWN | MLL | CHECKED | JDW | APPROVED | JDW |
| PRODUCT NO. | | | | | |
| DRAWING NO. | FL550 03 | | | | |
| SHEET | 15 OF 16 | | | | |

DRAWINGS FOR
 DADE COUNTY
 PRODUCT APPROVAL

Coral
 Architectural Products
 3880 RICE HAVEN ROAD, TUCUMCADERA, AL 36869
 PHONE: 867-772-7777 FAX: 867-483-2081

DESCRIPTION

REV/ BT

DATE

PERIMETER FASTENER LOCATIONS

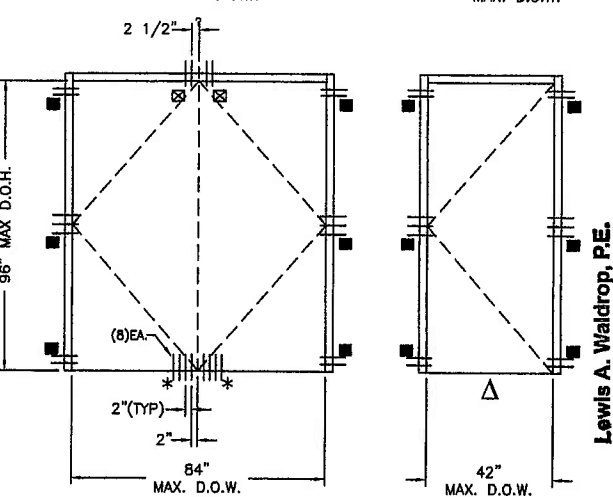
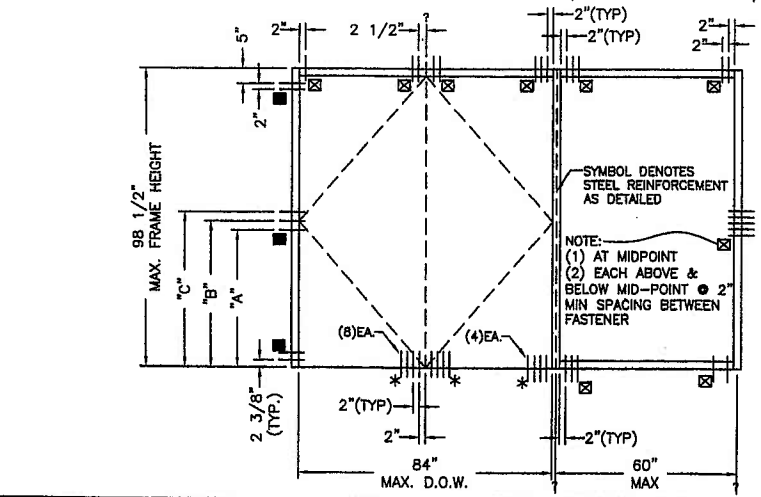
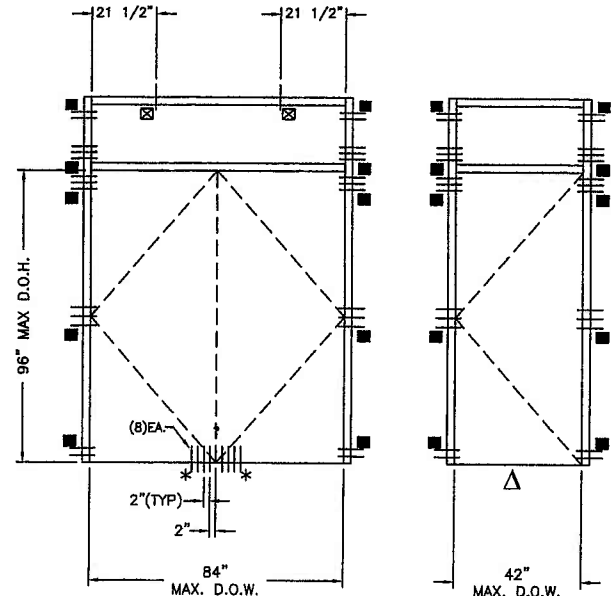
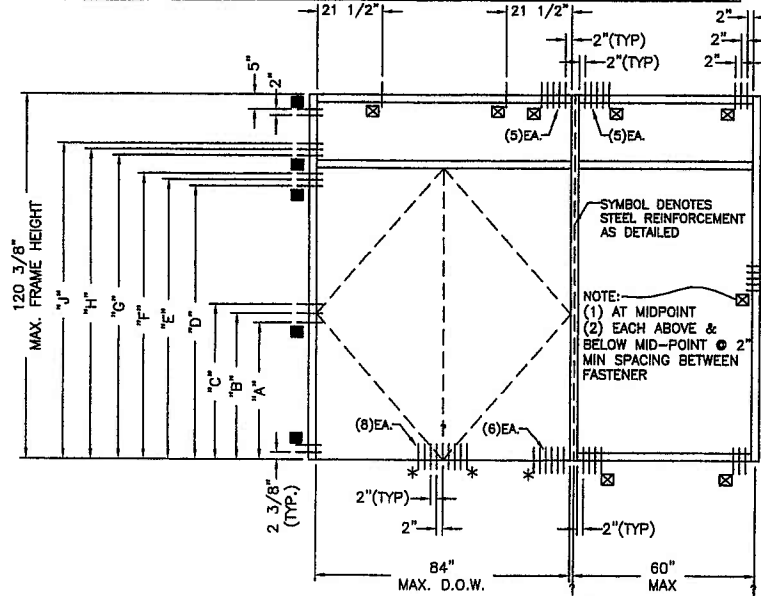
TYPICAL INSTALLATION INTO:
MIN. #2 SYP WOOD SUBSTRATE - THICKNESS
DETERMINED BY MIN. EMBEDMENT REQ'D

| DOOR OPENING HEIGHT | ANCHOR LOCATIONS FOR "LETTER" DIM. | | | | | | | | |
|---------------------------|------------------------------------|-----|-----|-----|-----|-----|------|------|------|
| | "A" | "B" | "C" | "D" | "E" | "F" | "G" | "H" | "J" |
| 84" | 45" | 48" | 51" | 78" | 80" | 82" | 89" | 91" | 93" |
| 96" | 45" | 48" | 51" | 90" | 92" | 94" | 100" | 102" | 104" |

TYP. INSTALLATION INTO:
WOOD SUBSTRATE

- 3/8" LAG BOLT WITH FILLER PLATE
FULL LENGTH, 3" MIN. EMBEDMENT
- 3/8" X 3-1/2" LAG BOLT, 3" MIN.
EMBEDMENT
- * #14 X 2-1/2" WOOD SCREW

EDGE DISTANCE 1 1/2", MIN. SPACING IS 2",
WOOD STRUCTURE IS MIN. #2 SYP



NOTES:
△ = STRUCTURAL FASTENERS NOT REQUIRED AT THRESHOLD.

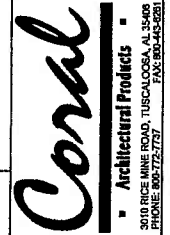
LEGEND
○ ⊕ EACH LINE REPRESENTS ONE FASTENER

MAXIMUM DESIGN PRESSURE
+70/-80 PSF

Lewis A. Waldrop, P.E.
FLA. P.E. #21959

Lewis A. Waldrop
2/21/08

Lewis A. Waldrop, P.E.
P. O. Box 620
Alto, GA 30510
706-778-3784



PRODUCT APPROVAL DRAWINGS
FL550 WINDOW WALL SYSTEM
DOORFRAMES

PERIMETER FASTENER LOCATIONS

| | |
|-------------|----------|
| DATE | 1/8/2008 |
| DRAWN | HLL |
| CHECKED | JDW |
| APPROVED | JDW |
| PROJECT NO. | |
| DRAWING NO. | FL550 03 |
| SHEET | 16 OF 16 |

DRAWINGS FOR
DADE COUNTY
PRODUCT APPROVAL

DESCRIPTION

REV BY DATE

3010 RICE MIKE ROAD, TUSCALOOSA, AL 35406
PHONE: 205-772-7737