

PRODUCT APPROVAL FOR FL550 DRY GLAZE SYSTEM

GENERAL NOTES:

TEST STANDARDS

TAS201, TAS202, TAS203

WATER INFILTRATION 15 PSF

AIR INFILTRATION 6.24 PSF

TYPICAL GLASS BITE 9/16" UNLESS OTHERWISE NOTED

1/4" MINIMUM SHIM SPACE @ PERIMETER UNLESS OTHERWISE NOTED

THIS PRODUCT HAS BEEN DESIGNED AND TESTED TO COMPLY WITH

FLORIDA BUILDING CODE 2010 EDITION FOR HVHZ

MATERIALS THAT COME IN CONTACT WITH OTHER DISSIMILAR MATERIALS

SHALL MEET REQUIREMENTS OF 2010 FLORIDA BUILDING CODE

SECTION 2003.8.4

SERIES 281 & 381 DOORS SHOWN ON DRAWINGS ARE UNDER SEPARATE APPROVAL NUMBER. PREVAILING PRESSURE OF DOOR WILL PREVAIL WHEN USED IN THIS SYSTEM

DRY GLAZE SYSTEM MUST BE USED WITH DUPONT SENTRY GLAS® .090 INTERLAYER THICKNESS.

ABBREVIATIONS:

DIA. = DIAMETER

D.L.O. = DAY LIGHT OPENING

EXT. = EXTERIOR

ELEVS. = ELEVATIONS

INT. = INTERIOR

MAX. = MAXIMUM

MIN. = MINIMUM

O.C. = ON CENTER

OPP. = OPPOSITE

TYP. = TYPICAL

INDEX TO DRAWINGS	
1	INDEX TO DRAWINGS AND NOTES
2	DOOR FRAMING ELEVATION WITH HEAVY MULLION
3	DOOR FRAMING ELEVATION WITH STANDARD MULLION
4	FRAMING DETAILS
5	FRAMING DETAILS
6	FRAMING DETAILS
7	FRAMING DETAILS
8	BILL OF MATERIALS
9	DIE DRAWINGS
10	CONCRETE SUBSTRATE ANCHOR LOCATIONS
11	HOT ROLLED STEEL SUBSTRATE ANCHOR LOCATIONS
12	LIGHT GAUGE STEEL SUBSTRATE ANCHOR LOCATIONS
13	WOOD SUBSTRATE ANCHOR LOCATIONS



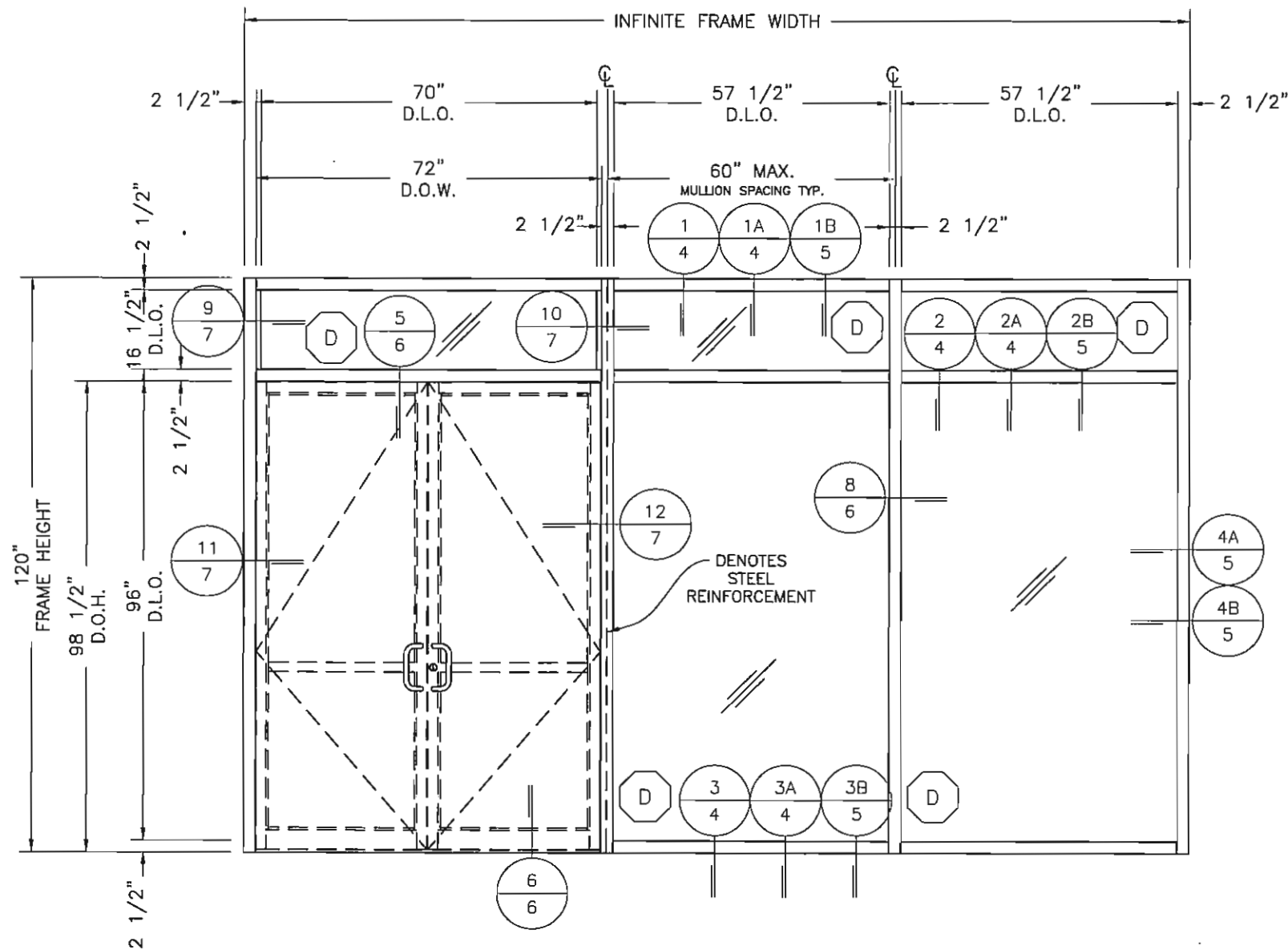
B BROADWAY ENGINEERING, P.A.
CIVIL, MECHANICAL, STRUCTURAL AND BUILDING DESIGN
See Us At www.Broadway-Eng.Com
1335 W. Cass Street
Tampa, Florida 33606 813-251-9244
Fax 813-251-9330 Bus. Email: Info@Broadway-Eng.Com
Cadd. Email: DGorr@Broadway-Eng.Com
BE-4129 Certificate of Authorization No. 4599

REV	BY	DATE	DESCRIPTION
1			

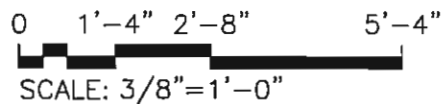
Coral
Architectural Products
3010 RICE MINE ROAD, TUSCALOOSA, AL 35406
PHONE: 800-772-7737 FAX: 800-255-7320

PRODUCT APPROVAL FOR
FL550 DRY GLAZE SYSTEM
INDEX TO DRAWINGS AND NOTES

DATE	5/17/2013		
DRAWN DEG	CHECKED WSS	APPROVED EAB	
PROJECT NO.			
DRAWING NO.	FL550_04		
SHEET	1 OF 13		



ELEVATION E1 TYPICAL HEAVY WALL MULLION



NOTES:
 DESIGN PRESSURE = +45/-45 PSF
 NS281 AND MS381 UNDER SEPARATE
 APPROVAL. DRY GLAZE SYSTEMS ARE
 APPROVED WITH DUPONT SENTRY
 GLAS® INTERLAYERS ONLY.

GLAZING SCHEDULE				
GLASS MARK SYMBOL	GLASS TYPE	MANUFACTURER	MAXIMUM D.L.O. SIZE	MAXIMUM SQUARE FEET
D	.25 H.S X .090 SENTRY GLAS® PLUS X .25 H.S. X .25 TEMPERED 1-5/16" OVERALL	DUPONT®	57 1/2" x 96"	38.3



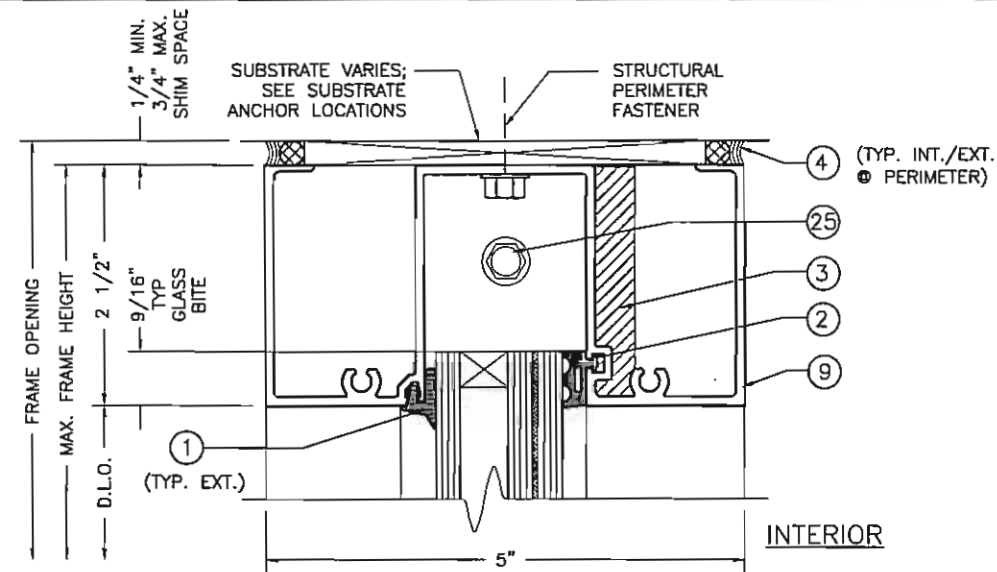
BROADWAY ENGINEERING, P.A.
 CIVIL, MECHANICAL, STRUCTURAL AND BUILDING DESIGN
 See Us At www.Broadway-Eng.Com
 1335 W. Cass Street
 Tampa, Florida 33606 813-251-9244
 Fax 813-251-9330 Bus. Email: Info@Broadway-Eng.Com
 Cadd. Email: DGorr@Broadway-Eng.Com
 BE-4129 Certificate of Authorization No. 4599

REV	BY	DATE	DESCRIPTION

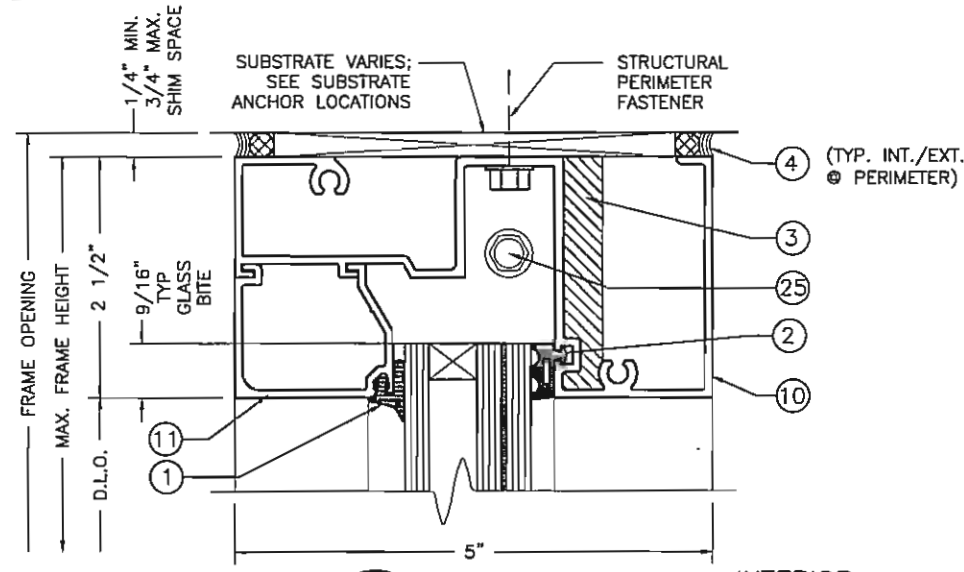
Corral
 Architectural Products
 3010 RICE MINE ROAD, TUSCALOOSA, AL 35406
 PHONE: 800-772-7737 FAX: 800-255-7320

PRODUCT APPROVAL FOR
 FL550 DRY GLAZE SYSTEM
 DOOR FRAMING ELEVATION
 HEAVY MULLION

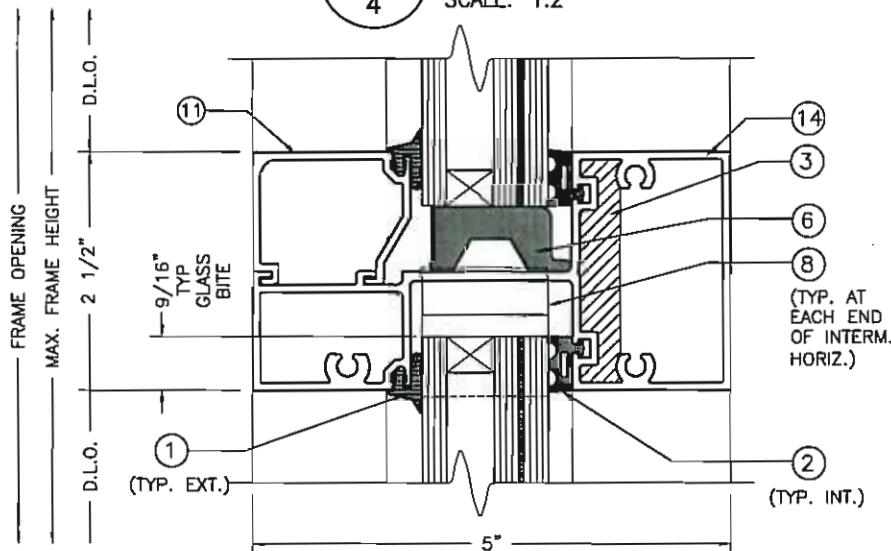
DATE: 5/17/2013
 DRAWN: DEG CHECKED: WSS APPROVED: EAB
 PROJECT NO.:
 DRAWING NO.: FL550_04
 SHEET: 2 OF 13



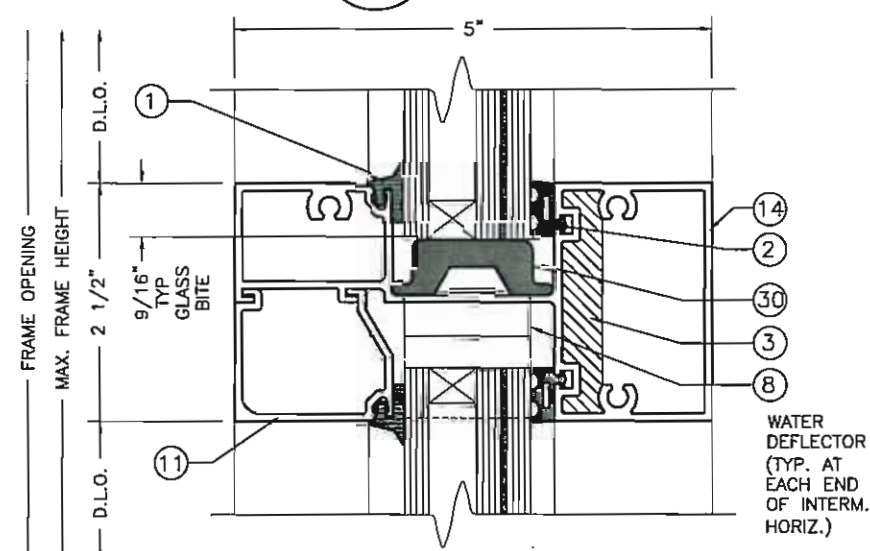
1 DETAIL
4 SCALE: 1:2



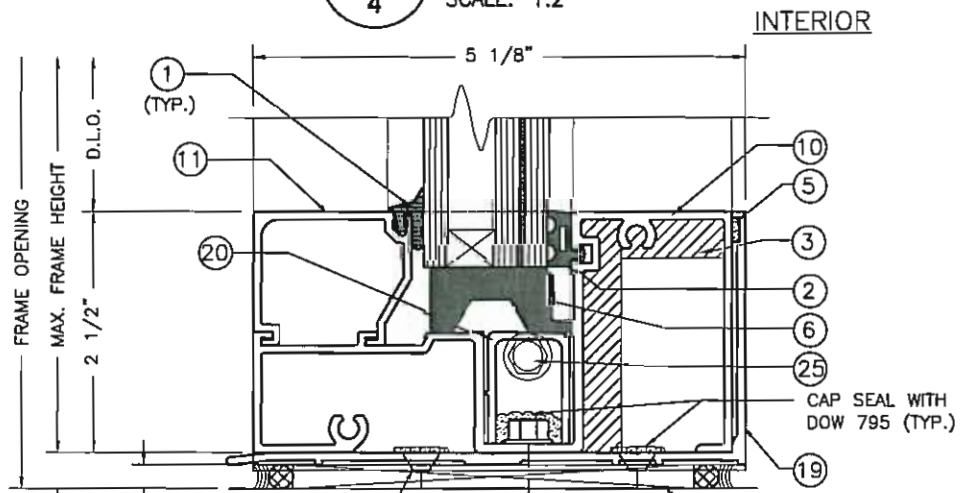
1A DETAIL
4 SCALE: 1:2



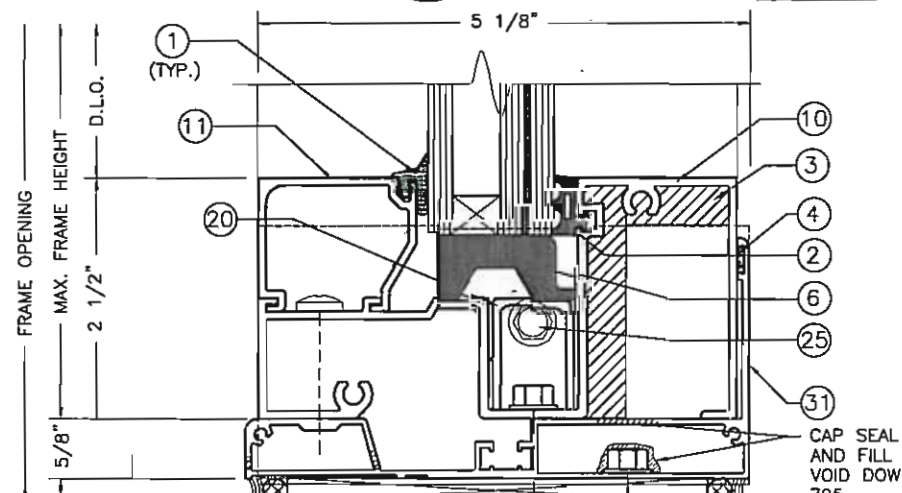
2 DETAIL
4 SCALE: 1:2



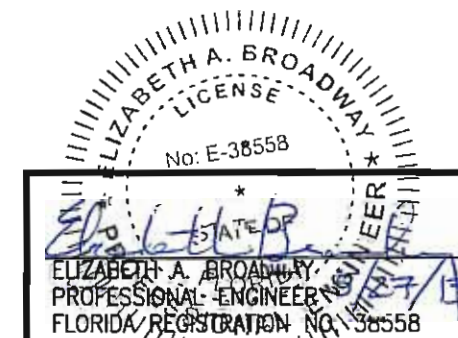
2A DETAIL
4 SCALE: 1:2



3 DETAIL
4 SCALE: 1:2



3A DETAIL
4 SCALE: 1:2



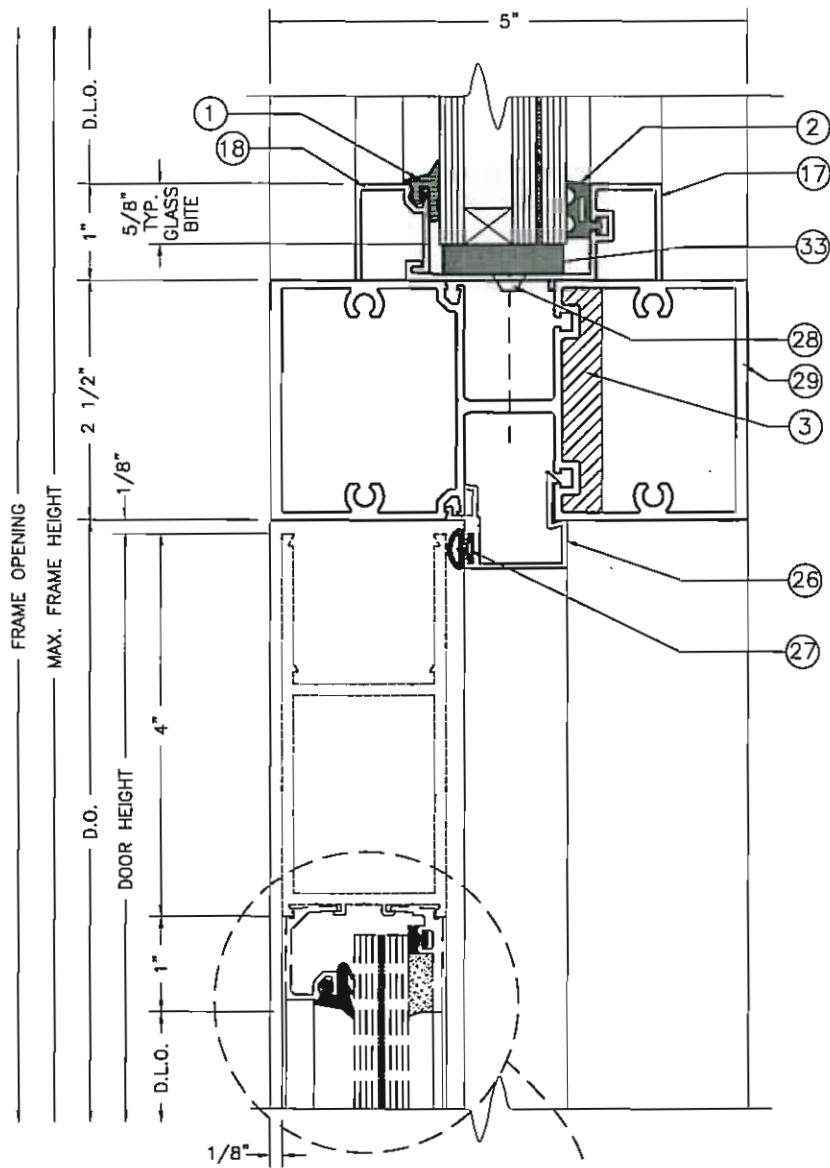
B BROADWAY ENGINEERING, P.A.
CIVIL, MECHANICAL, STRUCTURAL AND BUILDING DESIGN
See Us At www.Broadway-Eng.Com
1335 W. Cass Street
Tampa, Florida 33606 813-251-9244
Fax 813-251-9330 Bus. Email: Info@Broadway-Eng.Com
Cadd. Email: DGarr@Broadway-Eng.Com
BE-4129 Certificate of Authorization No. 4599

REV	BY	DATE	DESCRIPTION

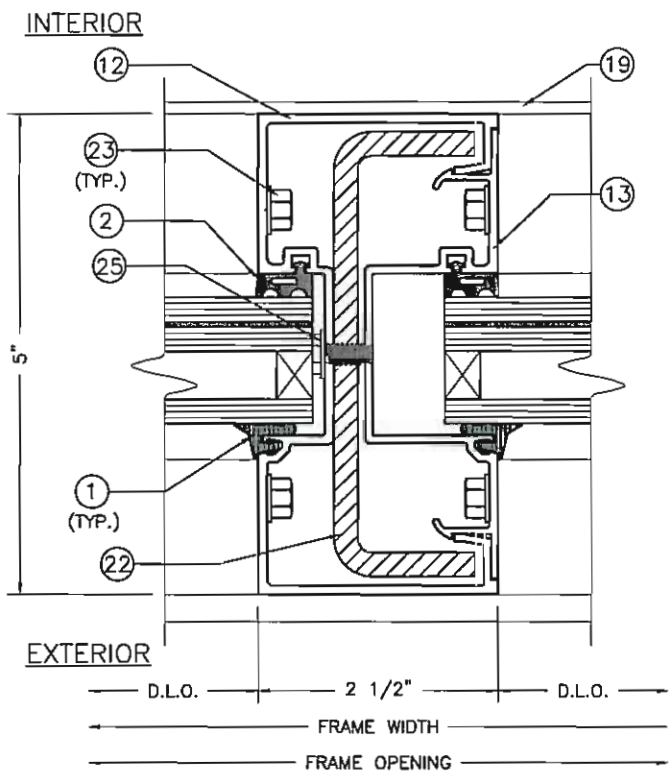
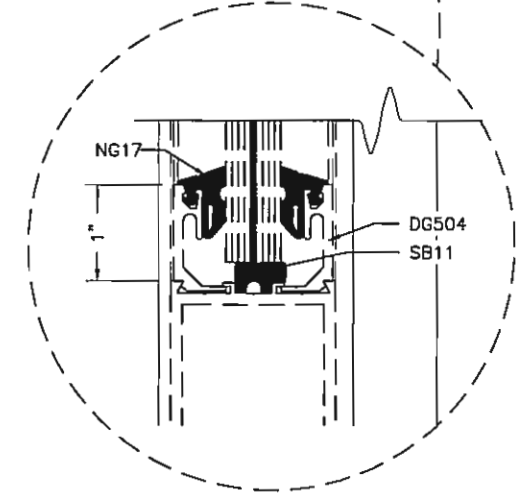
Coral
Architectural Products
3010 RICE MINE ROAD, TUSCALOOSA, AL 35406
PHONE: 800-772-7737 FAX: 800-295-7320

PRODUCT APPROVAL FOR
FL550 DRY GLAZE SYSTEM
FRAMING DETAILS

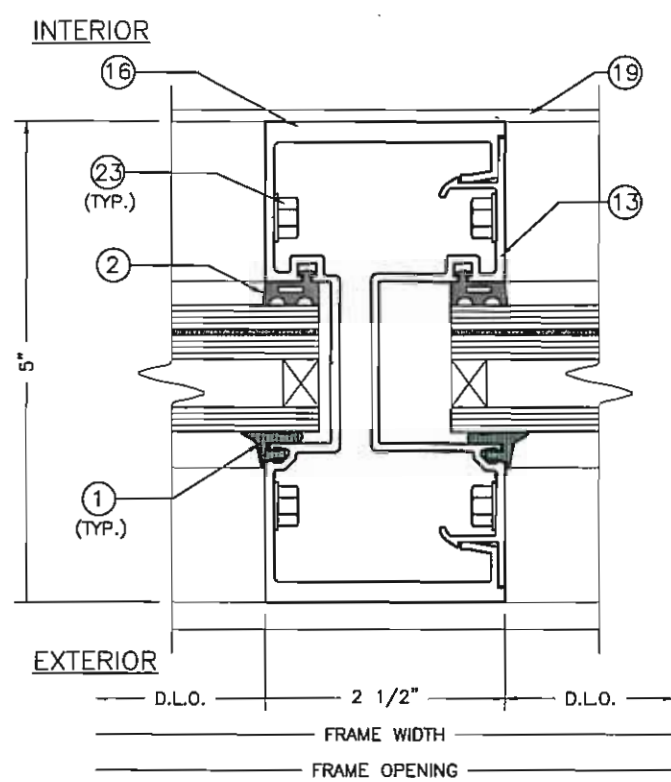
DATE	5/17/2013		
DRAWN	CHECKED	APPROVED	
DEG	WSS	EAB	
PROJECT NO.			
DRAWING NO.	FL550_04		
SHEET	4 OF 13		



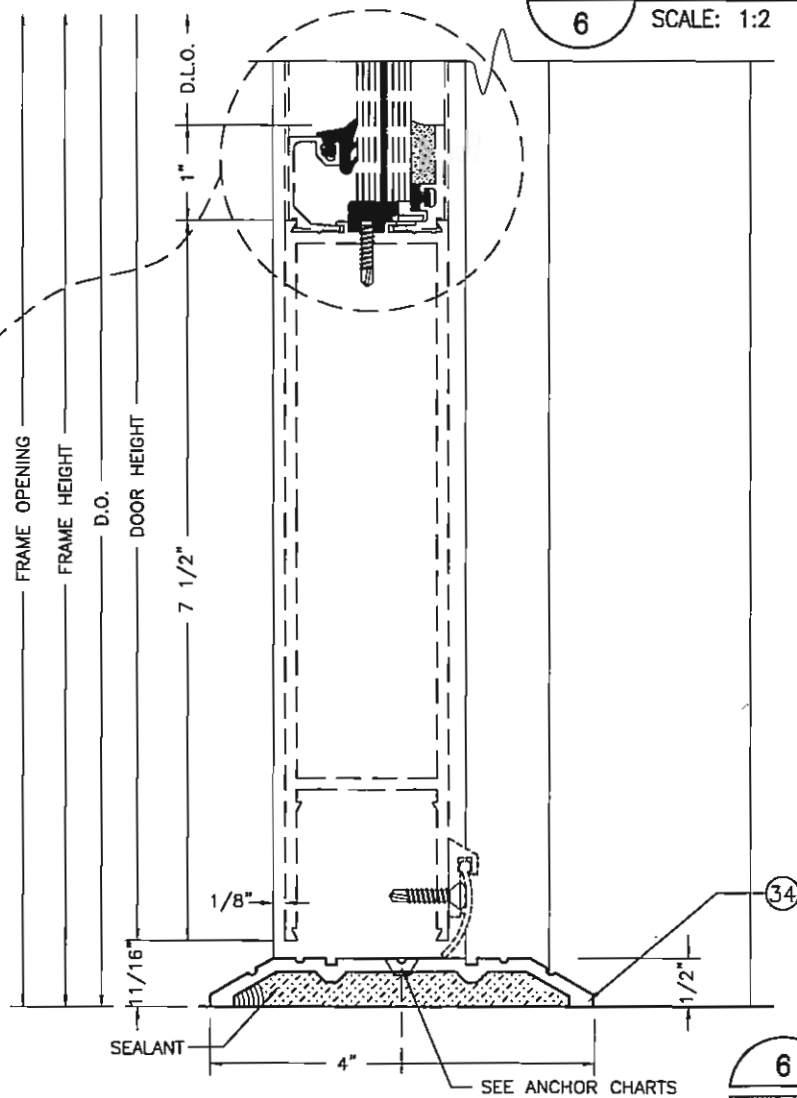
5 DETAIL
6 SCALE: 1:2



7 DETAIL
6 SCALE: 1:2



8 DETAIL
6 SCALE: 1:2



6 DETAIL
6 SCALE: 1:2

ELIZABETH A. BROADWAY
LICENSE
No: E-38558
STATE OF
FLORIDA
ELIZABETH A. BROADWAY
PROFESSIONAL ENGINEER
FLORIDA REGISTRATION NO. 38558

B BROADWAY ENGINEERING, P.A.
CIVIL, MECHANICAL, STRUCTURAL AND BUILDING DESIGN
See Us At www.Broadway-Eng.Com
1335 W. Cass Street
Tampa, Florida 33606 813-251-9244
Fax 813-251-9330 Bus. Email: Info@Broadway-Eng.Com
Cadd. Email: DCorr@Broadway-Eng.Com
BE-4129 Certificate of Authorization No. 4599

REV	BY	DATE	DESCRIPTION

Coral
Architectural Products
3010 RICE MINE ROAD, TUSCALOOSA, AL 35406
PHONE: 800-772-7737 FAX: 800-255-7320

PRODUCT APPROVAL FOR
FL550 DRY GLAZE SYSTEM
FRAMING DETAILS

DATE	5/17/2013	
DRAWN	CHECKED	APPROVED
DEG	WSS	EAB
PROJECT NO.		
DRAWING NO.	FL550_04	
SHEET	6 OF 13	

BILL OF MATERIALS

ITEM NO.	P/N	DESCRIPTION	DIMENSIONS	MATERIAL	MANUFACTURER	NOTES
1	NG1	EXTERIOR GLAZING GASKET	0.120 SPACE	EPDM	VARIES	MEETS ASTM C864
2	NG15	INTERIOR GLAZING GASKET	0.120 SPACE	EPDM	VARIES	MEETS ASTM C864
3	SM5601	JOINT SEALANT TAPE	0.500 X 0.125 X VARIES	BUTYL	SCHNEE-MOREHEAD	
4	795	SILICONE- PERIMETER SEALANT	FILL SPACE	SILICONE	DOW CORNING	USED AT PERIMETER
5	995	SILICONE- GLASS TO METAL	FILL SPACE	SILICONE	DOW CORNING	GLASS TO METAL AND INTERNAL
6	SB15	SETTING BLOCK @ SILL & HORIZONTAL	1.468 X 0.688 X 4.000	EPDM	VARIES	2 PER LITE
7	AS18	FASTENER	#10 X 1-1/4" FHP	STEEL	VARIES	
8	WD300-1	WATER DIVERTER	1.358 X 1.312 X 0.050	6063-T6 ALUMINUM	CORAL INDUSTRIES, INC.	AT EACH END OF INTERM. HORIZ.
9	FL551	HEAD OR WALL JAMB	2.500 X 5.000 X 0.094	6063-T6 ALUMINUM	CORAL INDUSTRIES, INC.	
10	FL552	SILL OR HEAD	2.500 X 4.980 X 0.094	6063-T6 ALUMINUM	CORAL INDUSTRIES, INC.	
11	FL553	GLASS STOP	1.250 X 1.646 X 0.078	6063-T6 ALUMINUM	CORAL INDUSTRIES, INC.	
12	FL554	STD. VERTICAL MULLION	2.500 X 5.000 X 0.094	6063-T6 ALUMINUM	CORAL INDUSTRIES, INC.	
13	FL555	OPEN BACK MULLION FILLER	0.681 X 4.670 X 0.080	6063-T6 ALUMINUM	CORAL INDUSTRIES, INC.	
14	FL556	INTERMEDIATE HORIZONTAL	2.500 X 4.980 X 0.094	6063-T6 ALUMINUM	CORAL INDUSTRIES, INC.	
15	FL515	FLAT FILLER AT DOOR JAMBS	0.681 X 4.670 X 0.080	6063-T6 ALUMINUM	CORAL INDUSTRIES, INC.	RUNS FULL LENGTH OF DOOR JAMB AT WALL
16	FL566	HEAVY VERTICAL MULLION	2.500 X 5.000 X 0.213	6063-T6 ALUMINUM	CORAL INDUSTRIES, INC.	
17	FL567	TRANSOM SASH	2.669 X 1.000 X 0.062	6063-T6 ALUMINUM	CORAL INDUSTRIES, INC.	
18	FL518	TRANSOM GLASS STOP	0.767 X 0.872 X 0.062	6063-T6 ALUMINUM	CORAL INDUSTRIES, INC.	
19	FL519	SUBSILL FLASHING	2.620 X 5.402 X 0.084	6063-T6 ALUMINUM	CORAL INDUSTRIES, INC.	
20	CS500-1	SETTING CHAIR	1.156 X 0.844 X 0.078	6063-T6 ALUMINUM	CORAL INDUSTRIES, INC.	
21	ED519-1	SILL FLASHING END DAM	2.500 X 1.000 X 0.062	6063-T6 ALUMINUM	CORAL INDUSTRIES, INC.	
22	SR504	STEEL REINFORCEMENT	4.562 X 1.250 X 0.250	A36 STEEL	VARIES	STEEL REINFORCEMENT FOR (2) (PRIMED RED OXIDE)
23	AS16	FASTENER	#14 X 1 HHSTIS	STEEL	VARIES	TYP. SPLINE SCREW VERTICAL/HORIZONTAL JOINTS
24	AS31	FASTENER	#6 X 3/8" PPH	STEEL	VARIES	ATTACH (19) TO (17)
25	AS38	FASTENER	#10-24 X 3/8" HH	STEEL	VARIES	ATTACH (22) TO (12)
26	DS501	DOOR STOP	1.008 X 1.258 X 0.050	6063-T6 ALUMINUM	CORAL INDUSTRIES, INC.	
27	NG5	DOOR STOP GASKET	0.070 SPACE	EPDM	VARIES	MEETS ASTM C864
28	AS39	FASTENER	#10 X 1-3/4" FHP	STEEL	VARIES	
29	FL507	DOOR HEADER	2.500 X 5.000 X 0.094	6063-T6 ALUMINUM	CORAL INDUSTRIES, INC.	
30	SB16	SETTING BLOCK FOR INVERTED HORIZONTAL	1.679 X 0.588 X 4.000	EPDM	VARIES	2 PER LITE
31	FL529	HIGH PERFORMANCE SUBSILL	2.500 X 5.249 X 0.084	6063-T6 ALUMINUM	CORAL INDUSTRIES, INC.	
32	AS21	FASTENER	#6X1/4" PPH TYPE "AB" Z. PLT.	STEEL	VARIES	
33	SB7	TRANSOM SETTING BLOCK	1.250 X .313 X 4.000	EPDM	VARIES	2 PER LITE
34	TH4	THRESHOLD	4.000 X .500 X .140	6063-T6 ALUMINUM	CORAL INDUSTRIES, INC.	
35	FL504	DOOR JAMB	2.500 X 5.000 X .094	6063-T6 ALUMINUM	CORAL INDUSTRIES, INC.	
36	CS550	SETTING CHAIR	1.544 X 1.218 X .062	6063-T6 ALUMINUM	CORAL INDUSTRIES, INC.	

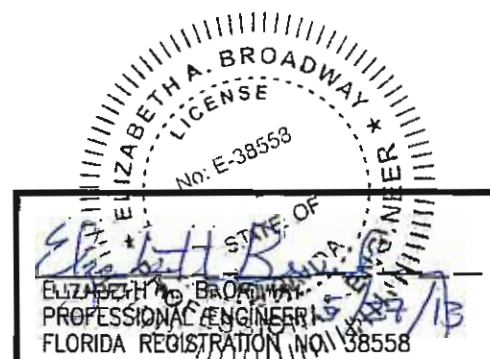
REV	BY	DATE	DESCRIPTION

Coral
Architectural Products

3010 RICE MINE ROAD, TUSCALOOSA, AL 35406
PHONE: 800-772-7737 FAX: 800-295-7320

PRODUCT APPROVAL FOR
FL550 DRY GLAZE SYSTEM

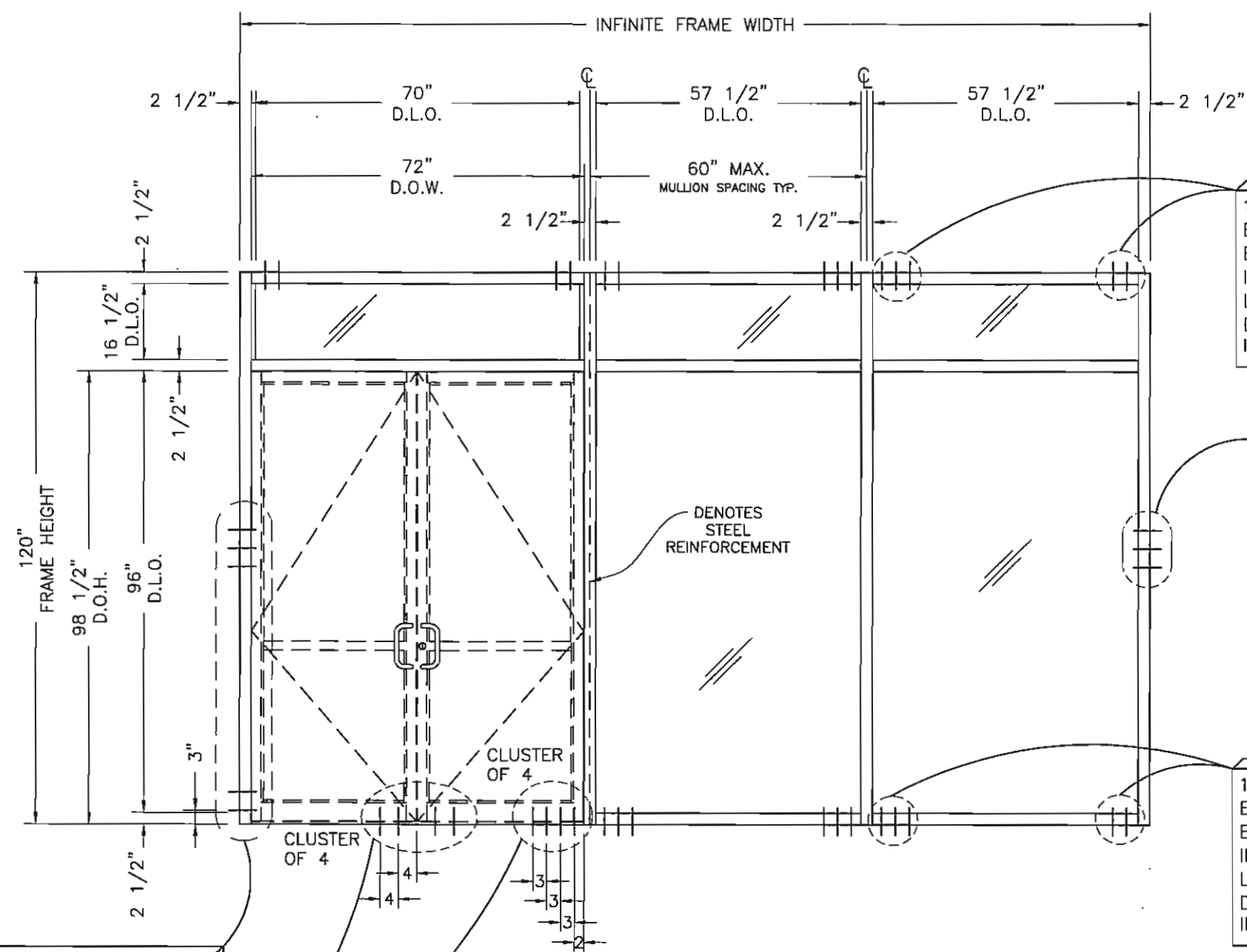
BILL OF MATERIALS



BROADWAY ENGINEERING, P.A.
CIVIL, MECHANICAL, STRUCTURAL AND BUILDING DESIGN
See Us At www.Broadway-Eng.Com

1335 W. Cass Street
Tampa, Florida 33606 813-251-9244
Fax 813-251-9330 Bus. Email: Info@Broadway-Eng.Com
Cadd. Email: DGorr@Broadway-Eng.Com
BE-4129 Certificate of Authorization No. 4599

DATE	5/17/2013		
DRAWN	CHECKED	APPROVED	
DES	WSS	EAB	
PROJECT NO.			
DRAWING NO.	FL550_04		
SHEET	8 OF 13		



- PERIMETER FASTENERS:
- TYPICAL INSTALLATION INTO SUBSTRATES
 - 2500 PSI CONCRETE
 - STEEL, 18 GA. MIN.
 - HOT ROLLED STEEL, 1/8" MIN. THICKNESS
 - S.O. PINE, GRADE NO. 2 OR BETTER
 - FIRST ANCHOR IS 2" FROM EDGE OF VERTICAL. EACH ADDITIONAL FASTENER IS AT REQUIRED MIN. SPACING.

HEAD
 1/4" X 2 1/2" TAPCON W/ 1 3/4" MIN. EMBEDMENT, MIN. 4" SPACING, 2-1/2" MIN. EDGE DIST., (2) @ JAMB (6) TOTAL @ INTERMEDIATE MULLION OR 3/8" X 2-1/2" LDT W/ 2" MIN. EMBEDMENT, 2" MIN. EDGE DIST., (1) @ JAMB, (4) TOTAL @ INTERMEDIATE MULLION

WALL JAMB
 LOCATE (3) @ MIDPOINT: 1/4" X 2 1/2" TAPCON. 3" MIN. SPACING WITH 1 3/4" MIN. EMBEDMENT, 2-1/2" MIN. EDGE DIST. OR LOCATE (2) @ MIDPOINT: 3/8" X 2-1/2" LDT W/ 2" MIN. EMBEDMENT, 2" MIN. EDGE DIST.

NOTE:
 MIDPOINT JAMB ANCHORS MAY BE OMITTED FOR PRESSURES LESS THAN 55 PSF

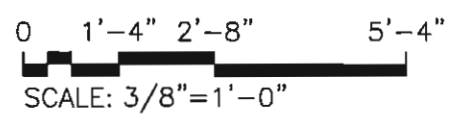
SILL
 1/4" X 2 1/2" TAPCON W/ 1 3/4" MIN. EMBEDMENT, MIN. 4" SPACING, 2-1/2" MIN. EDGE DIST., (2) @ JAMB (6) TOTAL @ INTERMEDIATE MULLION OR 3/8" X 2-1/2" LDT W/ 2" MIN. EMBEDMENT, 2" MIN. EDGE DIST., (1) @ JAMB, (2) TOTAL @ INTERMEDIATE MULLION

HIGH PERFORMANCE SUBSILL
 SAME AS SILL ABOVE TO SUBSTRATE. SILL MUST BE ANCHORED TO SUBSILL WITH 1/4"-14 X 1 1/2" STAINLESS STEEL PHP - (2) THUS @ 2" AND 4" ON EACH SIDE OF VERTICAL MULLION.

WALL JAMB
 1/4" X 2 1/2" TAPCON W/ 1 3/4" MIN. EMBEDMENT, 2-1/2" MIN. EDGE DIST. OR 3/8" X 2-1/2" LDT W/ 2" MIN. EMBEDMENT, 2" MIN. EDGE DIST.

THRESHOLD
 (4) EA. 1/4" X 2 1/2" TAPCON WITH 1 3/4" MIN. EMBEDMENT. LOCATIONS AS SHOWN, 2-1/2" MIN. EDGE DIST.

CONCRETE SUBSTRATE ANCHOR LOCATIONS



NO.	REV.	BY	DATE	DESCRIPTION

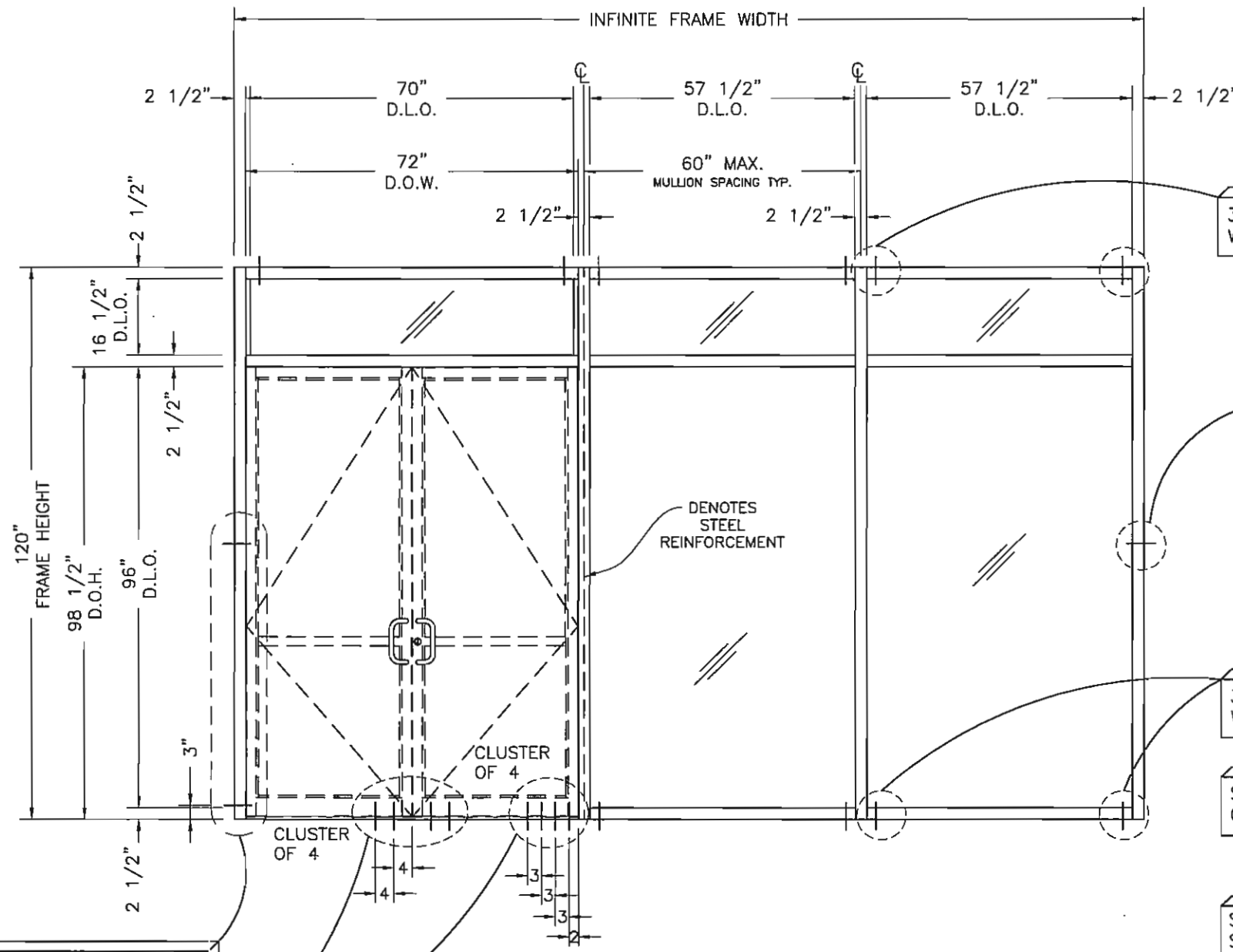
Coral
 Architectural Products
 3010 RICE MINE ROAD, TUSCALOOSA, AL 35406
 PHONE: 800-772-7737 FAX: 800-255-7320

PRODUCT APPROVAL FOR
 FL550 DRY GLAZE SYSTEM
 CONCRETE SUBSTRATE ANCHOR
 LOCATIONS

STATE OF FLORIDA
 ELIZABETH A. BROADWAY
 PROFESSIONAL ENGINEER
 FLORIDA REGISTRATION NO. 38558

BROADWAY ENGINEERING, P.A.
 CIVIL, MECHANICAL, STRUCTURAL AND BUILDING DESIGN
 See Us At www.Broadway-Eng.Com
 1335 W. Cass Street
 Tampa, Florida 33606 813-251-9244
 Fax 813-251-9330 Bus. Email: Info@Broadway-Eng.Com
 Cadd. Email: DGorr@Broadway-Eng.Com
 BE-4129 Certificate of Authorization No. 4599

DATE	5/17/2013		
DRAWN	CHECKED	APPROVED	
DEG	WSS	EAB	
PROJECT NO.			
DRAWING NO.	FL550_04		
SHEET	10 OF 13		



- PERIMETER FASTENERS:
- TYPICAL INSTALLATION INTO SUBSTRATES
 - 2500 PSI CONCRETE
 - STEEL, 18 GA. MIN.
 - HOT ROLLED STEEL, 1/8" MIN. THICKNESS
 - SO. PINE, GRADE NO. 2 OR BETTER
 - FIRST ANCHOR IS 2" FROM EDGE OF VERTICAL. EACH ADDITIONAL FASTENER IS AT REQUIRED MIN. SPACING.

HEAD
 3/8"-16 X 2 3/4" HH BOLT WITH WASHER AND NUT

WALL JAMB
 LOCATE @ MIDPOINT:
 3/8"-16 X 2 3/4" HH BOLT WITH WASHER AND NUT.
 1 1/2" MIN. SPACING

NOTE:
 MIDPOINT JAMB ANCHORS MAY BE OMITTED FOR PRESSURES LESS THAN 55 PSF

SILL
 3/8"-16 X 2 3/4" HH BOLT WITH WASHER AND NUT

SEE SHEET 10 OF 13 FOR CONCRETE ATTACHMENT

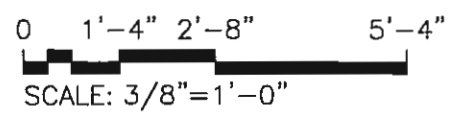
HIGH PERFORMANCE SUBSILL
 SAME AS SILL ABOVE TO SUBSTRATE. SILL MUST BE ANCHORED TO SUBSILL WITH 1/4"-14 X 1 1/2" STAINLESS STEEL PHP - (2) THUS @ 2" AND 4" ON EACH SIDE OF VERTICAL MULLION.

WALL JAMB
 3/8"-16 X 2 3/4" HH BOLT WITH WASHER AND NUT

THRESHOLD
 (4) EA. 1/4"-14 X 1-1/2" TEK 3 FHP SCREW. LOCATIONS AS SHOWN

SEE SHEET 10 OF 13 FOR CONCRETE ATTACHMENT

STEEL SUBSTRATE ANCHOR LOCATIONS



ELIZABETH A. BROADWAY
 LICENSE
 No: E-38558
 STATE OF FLORIDA
 PROFESSIONAL ENGINEER
 FLORIDA REGISTRATION NO. 38558

BROADWAY ENGINEERING, P.A.
 CIVIL, MECHANICAL, STRUCTURAL AND BUILDING DESIGN
 See Us At www.Broadway-Eng.Com
 1335 W. Cass Street
 Tampa, Florida 33606 813-251-9244
 Fax 813-251-9330 Bus. Email: Info@Broadway-Eng.Com
 Cadd. Email: DGorr@Broadway-Eng.Com
 BE-4129 Certificate of Authorization No. 4599

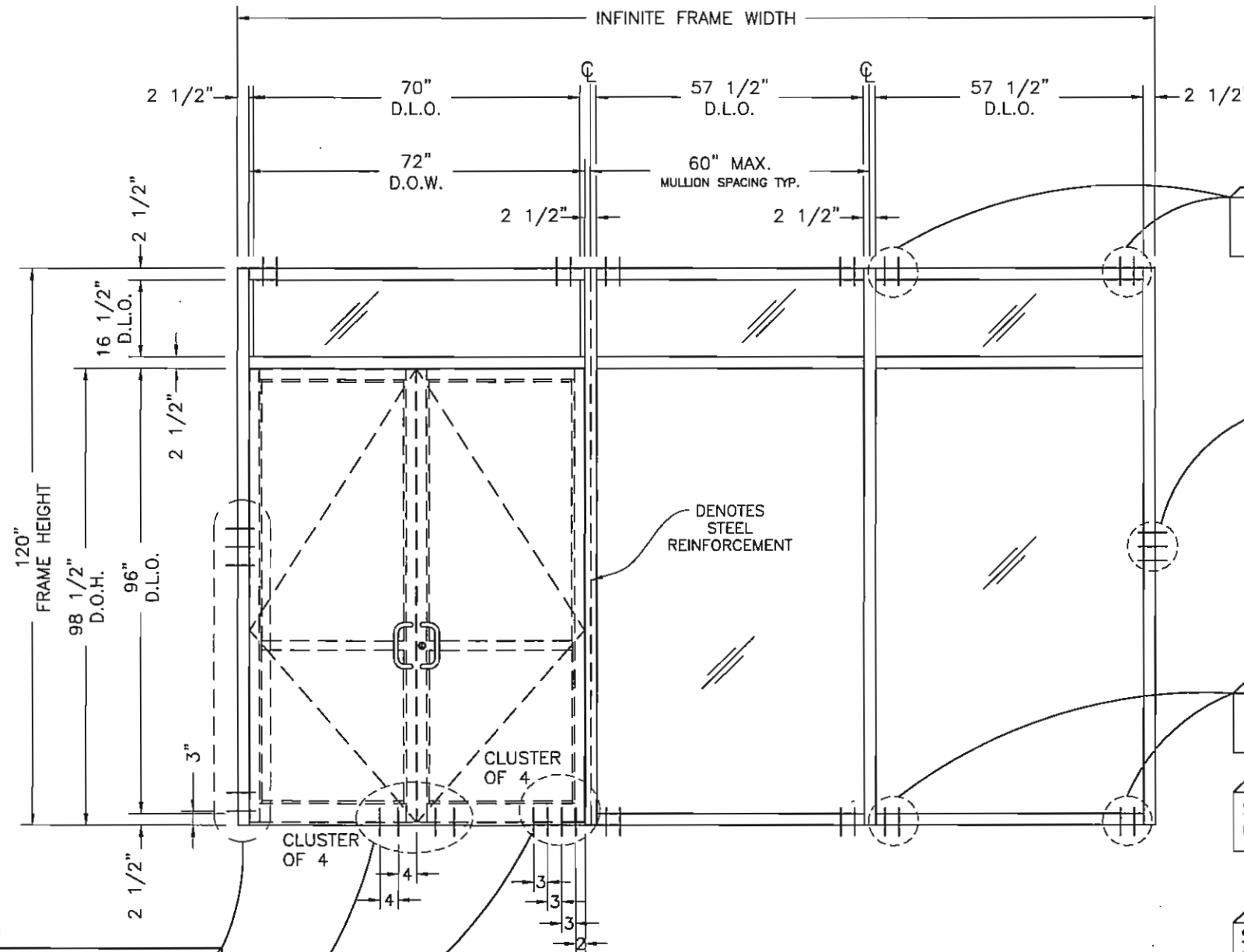
REV	BY	DATE	DESCRIPTION

Corral
 Architectural Products
 3010 RICE MINE ROAD, TUSCALOOSA, AL 35408
 PHONE: 800-772-7737 FAX: 800-255-7320

PRODUCT APPROVAL FOR
 FL550 DRY GLAZE SYSTEM
 STEEL SUBSTRATE ANCHOR LOCATIONS

DATE	5/17/2013
DRAWN	CHECKED
DEG	WSS
APPROVED	EAB
PROJECT NO.	
DRAWING NO.	FL550_04
SHEET	11 OF 13

- PERIMETER FASTENERS:
- TYPICAL INSTALLATION INTO SUBSTRATES
 - 2500 PSI CONCRETE
 - STEEL, 18 GA. MIN.
 - HOT ROLLED STEEL, 1/8" MIN. THICKNESS
 - SO. PINE, GRADE NO. 2 OR BETTER
 - FIRST ANCHOR IS 2" FROM EDGE OF VERTICAL. EACH ADDITIONAL FASTENER IS AT REQUIRED MIN. SPACING.



HEAD
1/4"-14 X 1 1/2" TEK 3 SCREW

WALL JAMB
LOCATE (3) @ MIDPOINT:
1/4" X 1 1/2" TEK SCREW
TYP., 1 1/2" MIN SPACING

NOTE:
MIDPOINT JAMB ANCHORS MAY BE OMITTED
FOR PRESSURES LESS THAN 55 PSF

SILL
1/4"-14 X 1 1/2" TEK 3 SCREW

SEE SHEET 10 OF 13 FOR
CONCRETE ATTACHMENT

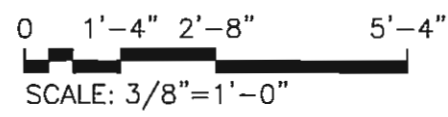
HIGH PERFORMANCE SUBSILL
SAME AS SILL ABOVE TO SUBSTRATE.
SILL MUST BE ANCHORED TO SUBSILL
WITH 1/4"-14 X 1 1/2" STAINLESS
STEEL PHP - (2) THUS @ 2" AND 4"
ON EACH SIDE OF VERTICAL MULLION.

WALL JAMB
1/4"-14 X 1 1/2" TEK 3 SCREW

THRESHOLD
(4) EA. 1/4"-14 X 1-1/2"
TEK 3 FHP SCREW.
LOCATIONS AS SHOWN

SEE SHEET 10 OF 13 FOR
CONCRETE ATTACHMENT

**LIGHT GAUGE MIN. 18 GA. STEEL
OR MIN. 1/8" HOT ROLLED STEEL
SUBSTRATE ANCHOR LOCATIONS**



ELIZABETH A. BROADWAY
LICENSE
No. E-38558
STATE OF FLORIDA
PROFESSIONAL ENGINEER
FLORIDA REGISTRATION NO. 38558

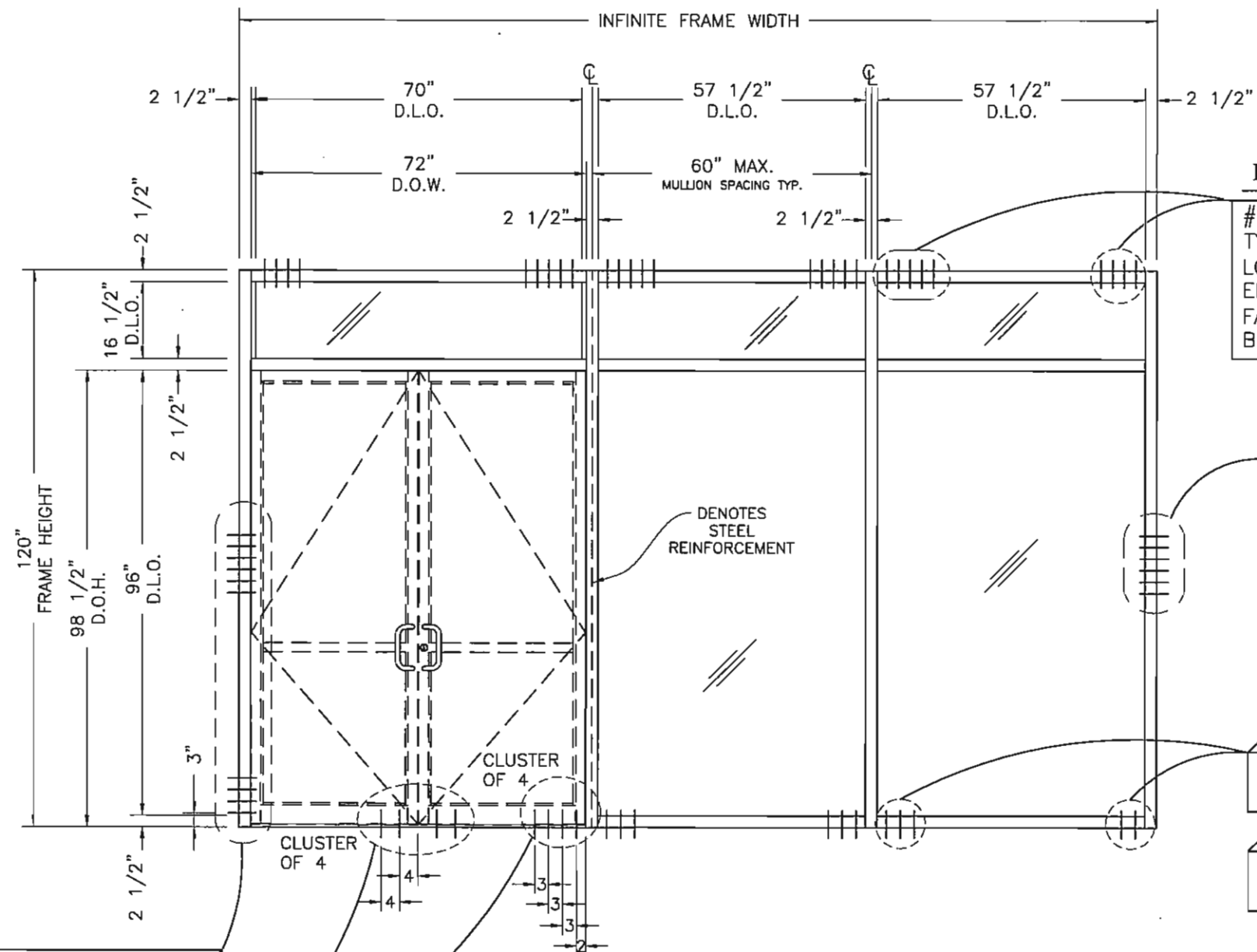
B BROADWAY ENGINEERING, P.A.
CIVIL, MECHANICAL, STRUCTURAL AND BUILDING DESIGN
See Us At www.Broadway-Eng.Com
1335 W. Cass Street
Tampa, Florida 33606 813-251-9244
Fax 813-251-9330 Bus. Email: Info@Broadway-Eng.Com
Cadd. Email: DGorr@Broadway-Eng.Com
BE-4129 Certificate of Authorization No. 4599

REV	BY	DATE	DESCRIPTION

Corral
Architectural Products
3010 RICE MINE ROAD, TUSCALOOSA, AL 35406
PHONE: 800-772-7737 FAX: 800-255-7320

PRODUCT APPROVAL FOR
FL550 DRY GLAZE SYSTEM
LIGHT GAUGE STEEL SUBSTRATE
ANCHOR LOCATIONS

DATE	5/17/2013
DRAWN	CHECKED
DEG	WSS
APPROVED	EAB
PROJECT NO.	
DRAWING NO.	FL550_04
SHEET	12 OF 13



- PERIMETER FASTENERS:
- TYPICAL INSTALLATION INTO SUBSTRATES
 - 2500 PSI CONCRETE
 - STEEL, 18 GA. MIN.
 - HOT ROLLED STEEL, 1/8" MIN. THICKNESS
 - SO. PINE, GRADE NO. 2 OR BETTER
 - FIRST ANCHOR IS 2" FROM EDGE OF VERTICAL. EACH ADDITIONAL FASTENER IS AT REQUIRED MIN. SPACING.

HEAD

#14 X 2 1/2" WOOD SCREWS TYP. WITH 2" MIN. EMBEDMENT. LOCATE FIRST ANCHOR 2" FROM EDGE OF MULLION AND ADDITIONAL FASTENER @ 2" MIN. SPACING BETWEEN ANCHORS.

WALL JAMB

LOCATE (3 EA.) ABOVE AND BELOW MID-POINT. #14 X 2 1/2" WOOD SCREWS TYP. 2" MIN. EMBEDMENT; 2" MIN. SPACING BETWEEN ANCHORS.

NOTE:

MIDPOINT JAMB ANCHORS MAY BE OMITTED FOR PRESSURES LESS THAN 55 PSF

SILL

SEE SHEET 11 OF 12 FOR STEEL ATTACHMENT

SEE SHEET 10 OF 113 FOR CONCRETE ATTACHMENT

HIGH PERFORMANCE SUBSILL

SAME AS SILL ABOVE TO SUBSTRATE. SILL MUST BE ANCHORED TO SUBSILL WITH 1/4"-14 X 1 1/2" STAINLESS STEEL PHP - (2) THUS @ 2" AND 4" ON EACH SIDE OF VERTICAL MULLION.

WALL JAMB

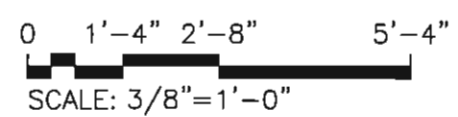
#14 X 2 1/2" WOOD SCREWS TYP. WITH 2" MIN. EMBEDMENT

THRESHOLD

(4) EA. 1/4"-14 X 1-1/2" TEK 3 FHP SCREW. LOCATIONS AS SHOWN

SEE SHEET 10 OF 113 FOR CONCRETE ATTACHMENT

WOOD SUBSTRATE ANCHOR LOCATIONS



BROADWAY ENGINEERING, P.A.
 CIVIL, MECHANICAL, STRUCTURAL AND BUILDING DESIGN
 See Us At www.Broadway-Eng.Com
 1335 W. Cass Street
 Tampa, Florida 33606 813-251-9244
 Fax 813-251-9330 Bus. Email: Info@Broadway-Eng.Com
 Cadd. Email: DGorr@Broadway-Eng.Com
 BE-4129 Certificate of Authorization No. 4599

DATE	5/17/2013
DRAWN	DEG
CHECKED	WSS
APPROVED	EAB
PROJECT NO.	
DRAWING NO.	FL550_04
SHEET	13 OF 13

PRODUCT APPROVAL FOR
 FL550 DRY GLAZE SYSTEM
 WOOD SUBSTRATE ANCHOR LOCATIONS

Coral
 Architectural Products
 3010 RICE MINE ROAD, TUSCALOOSA, AL 35406
 PHONE: 800-772-7737 FAX: 800-255-7320