

# Hurricane Impact-Resistant GLAZING SYSTEM

## FL500 Storefront System

### Dry Glaze

- Design Pressure = +70/-70 PSF
- Water @ 15 PSF
- Air Infiltration at 6.24 PSF < .06 CFM

Extreme environmental conditions call for a glazing system equally extreme.

Coral's Hurricane Impact-Resistant Systems are designed to provide structural integrity under the intense demands of nature at its worst. Independent laboratory testing has proven our systems sound against impact and wind forces in excess of 165 MPH.

Prepare for the worst with the best!

# FL500

STOREFRONT SYSTEM • 9/16"

  
**FRONT LINE**  
ALUMINUM SYSTEMS

*Coral*  
Architectural Products

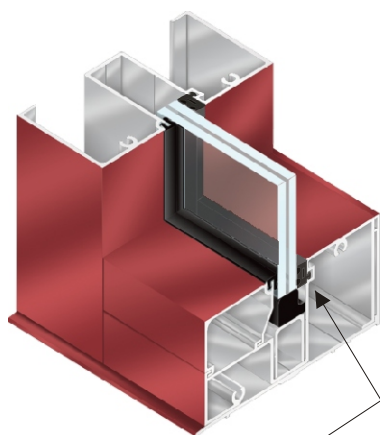


# Hurricane Impact-Resistant GLAZING SYSTEM

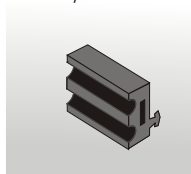
## FL500

STOREFRONT SYSTEM • 9/16"

- 2-1/2" x 5" for 9/16" glazing infill
- Screw-spline joinery
- Hydraulic CoraPunch or drill jig fabrication options
- Heavy wall mullion option without steel
- Tested with and without steel reinforcement



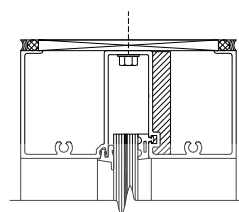
Dry Glaze



DuPont™ and SentryGlas® SG interlayer used with interior dry gaskets.

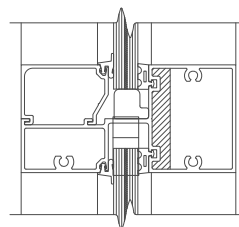
**HEAD**

Dry Glaze



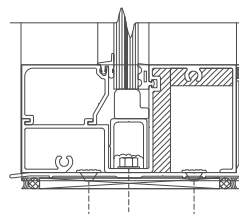
**HORIZONTAL**

Dry Glaze



**SILL**

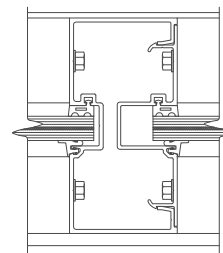
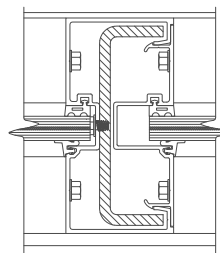
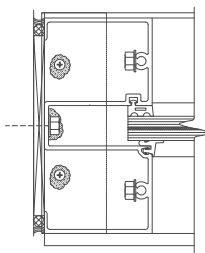
Dry Glaze



**JAMB**

**VERTICAL STEEL  
REINFORCEMENT**

**VERTICAL**



Dry Glaze

**FRONT LINE**  
ALUMINUM SYSTEMS

*Coral*

■ Architectural Products ■

3010 Rice Mine Road ■ Tuscaloosa, AL 35406  
1.800.772.7737 ■ Fax 1.800.443.6261 ■ [www.coralind.com](http://www.coralind.com)

\*DuPont™ and SentryGlas® are trademarks and registered trademarks of E.I. DuPont de Nemours and Company or its affiliates.