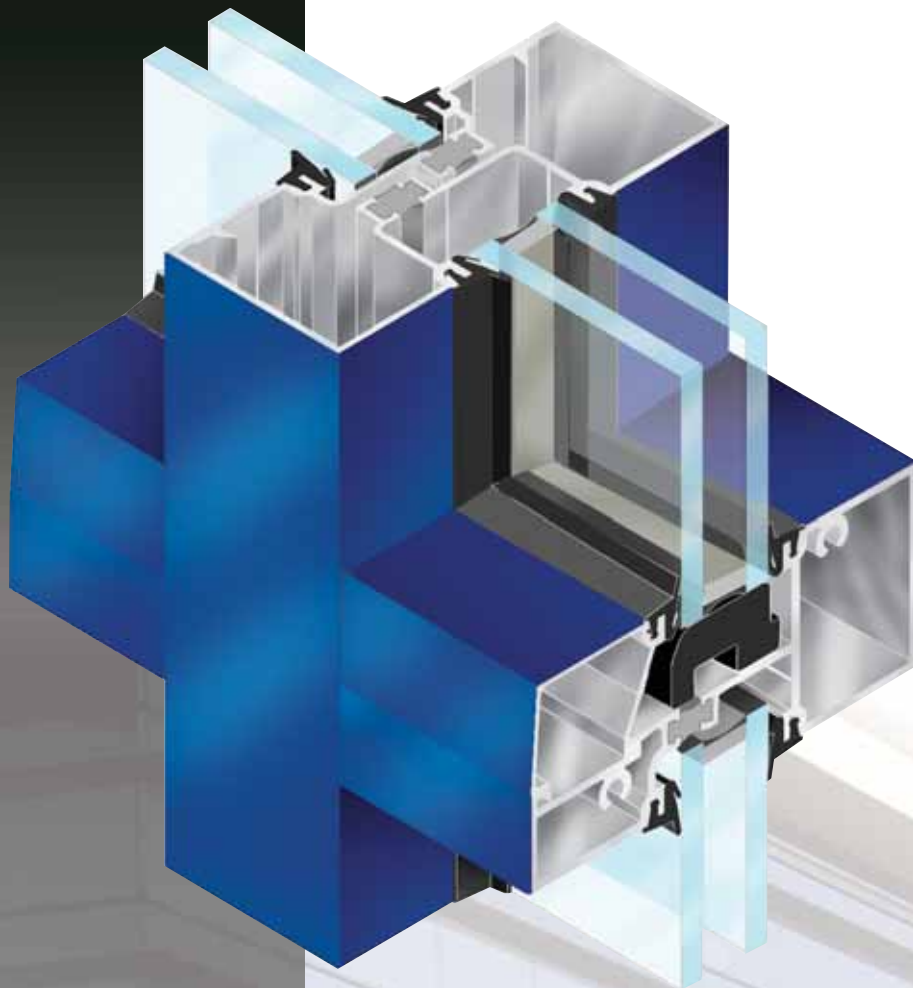


# Thermal Storefront

## GLAZING SYSTEM



### Performance

- **ASTM E330 - Structural**  
Design Pressure +35/-35 PSF
- **ASTM E331 - Water**  
15 PSF
- **ASTM E283 - Air**  
@ 6.24 PSF < 0.060 cfm/ft<sup>2</sup>
- **AAMA 1503 - Thermal**  
U-Factor .40  
CRF 57

### Front Line FL300T 2" x 4 1/2"

Thermally Broken Storefront System takes the superior performance of the FL300 System to the next level.

Utilizing a tested and time-proven polyurethane thermal barrier, FL300T provides the expected performance of a thermally broken system.

### FINISHES

- Architectural Class I and Class II Anodized finishes are available in stock colors.
- Architectural Powder Coat, the "green" choice, conforming to AAMA 2604 and AAMA 2605 are available in stock and custom match colors.

# FL300T

THEMAL STOREFRONT SYSTEM • 1"

  
**FRONT LINE**  
ALUMINUM SYSTEMS

*Coral*

▪ Architectural Products ▪

# Thermal Storefront

## GLAZING SYSTEM

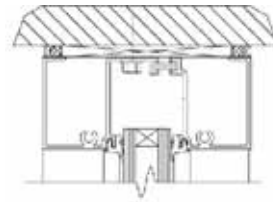
### FL300T

THERMAL STOREFRONT SYSTEM • 1"

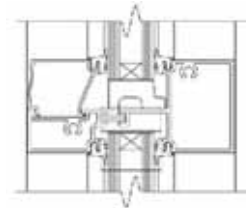
#### FEATURES

- 2" x 4 1/2" Profile for 1" glazing infill
- Top load EPDM gaskets
- Full complement of system designed parts and accessories
- Full height sub-sill
- Heavy wall mullion option without steel reinforcing
- Hydraulic CoraPunch or drill jig fabrication options
- Screw-spline joinery using #14 x 1" hex-head screws
- Deep pocket perimeter sections allow for:
  - Direct anchor attachment to substrate
  - Use of 1/4" diameter hex-head anchor bolts to substrate
- Deep pocket perimeter sections eliminate:
  - Drilling access holes
  - Blind caulk seals
- Variable glazing options

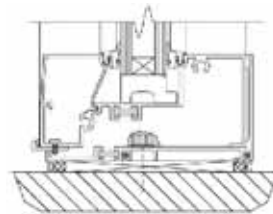
#### HEAD



#### HORIZONTAL



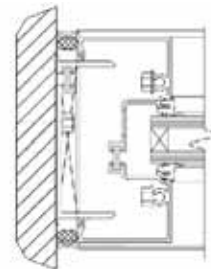
#### SILL



#### JAMB



#### ALTERNATE JAMB



#### VERTICAL

