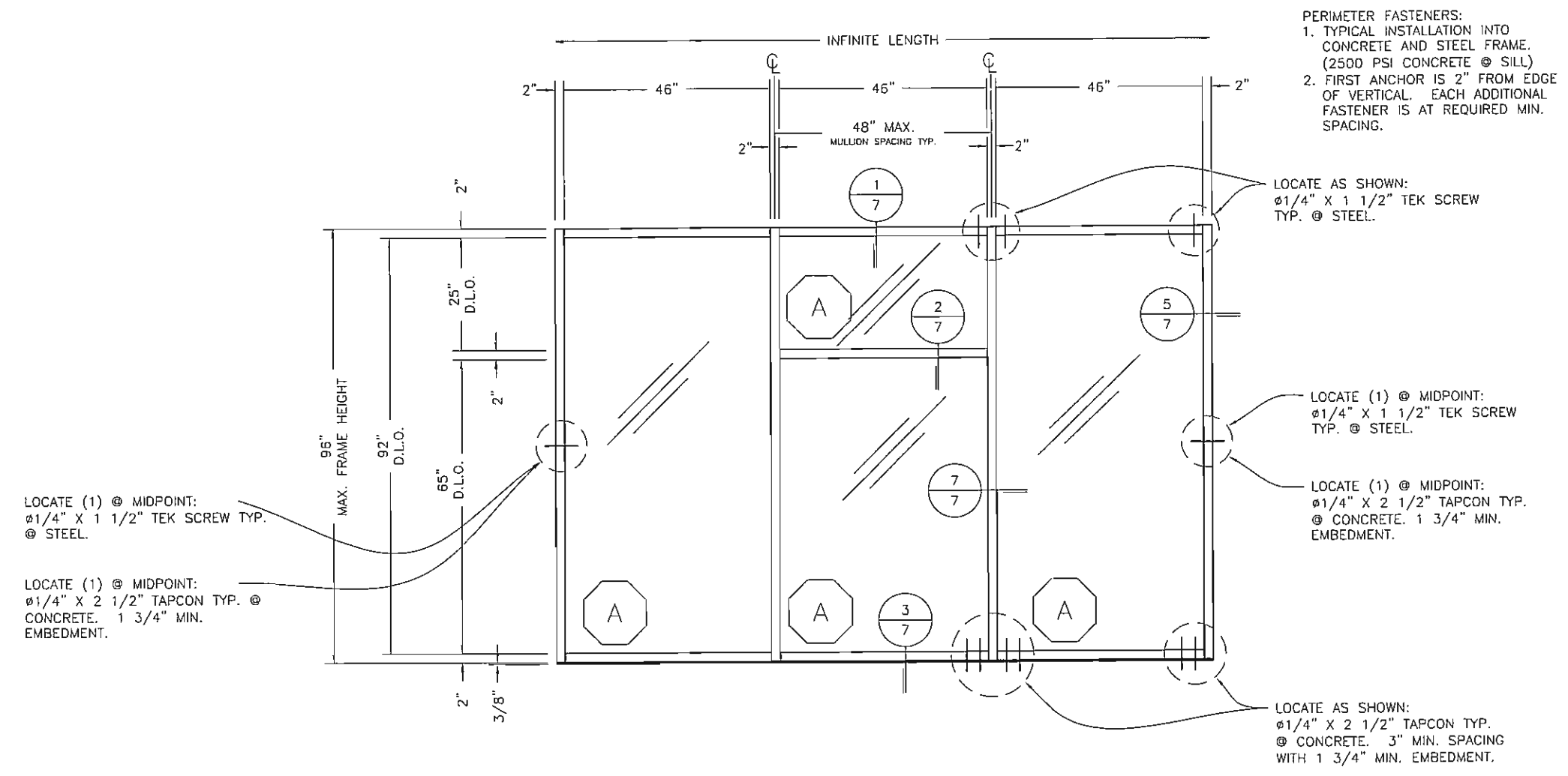


S:\ASSEMBLIES & FABRICATION\C.A.P\MOCK-UPS\FPA\FL3002 TYPICAL ELEVATION HEAVY ALUMINUM MULLION.dwg, 12/29/2005 10:05:18 AM, phowel, \lpp://192.168.9.25



PERIMETER FASTENERS:
 1. TYPICAL INSTALLATION INTO CONCRETE AND STEEL FRAME. (2500 PSI CONCRETE @ SILL)
 2. FIRST ANCHOR IS 2" FROM EDGE OF VERTICAL. EACH ADDITIONAL FASTENER IS AT REQUIRED MIN. SPACING.

LOCATE AS SHOWN:
 Ø1/4" X 1 1/2" TEK SCREW TYP. @ STEEL.

LOCATE (1) @ MIDPOINT:
 Ø1/4" X 1 1/2" TEK SCREW TYP. @ STEEL.

LOCATE (1) @ MIDPOINT:
 Ø1/4" X 2 1/2" TAPCON TYP. @ CONCRETE. 1 3/4" MIN. EMBEDMENT.

LOCATE AS SHOWN:
 Ø1/4" X 2 1/2" TAPCON TYP. @ CONCRETE. 3" MIN. SPACING WITH 1 3/4" MIN. EMBEDMENT.

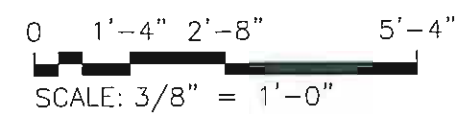
LOCATE (1) @ MIDPOINT:
 Ø1/4" X 1 1/2" TEK SCREW TYP. @ STEEL.

LOCATE (1) @ MIDPOINT:
 Ø1/4" X 2 1/2" TAPCON TYP. @ CONCRETE. 1 3/4" MIN. EMBEDMENT.

TYPICAL ELEVATION HEAVY ALUMINUM MULLION

- NOTES:
1. HORIZONTAL MULLION (DETAIL 2/7) IS OPTIONAL AT ANY LOCATION IN ANY BAY
 2. D.L.O. = DAYLIGHT OPENING
 3. SEE NS213, MS380 & WS500 DOOR PRODUCT APPROVALS
 4. GLASS SIZE = D.L.O. + 7/8"

- TEST PARAMETERS:
1. DESIGN PRESSURE = +/-60 PSF
 2. AIR TEST AT 6.24 PSF
 3. WATER TEST AT 15 PSF
 4. MAXIMUM DEFLECTION = L/175 OR .549"



BROADWAY ENGINEERING
 1335 West Cass Street
 Tampa, Florida 33608

Elizabeth Broadway
 Elizabeth Broadway, P.E.
 Professional Engineer
 FL Registration No. 38558

11/10/06

FLORIDA PRODUCT
 APPROVAL DRAWINGS
 - FL300 FRAMING SYSTEM -
 FRAMING ELEVATIONS

DATE 12/29/2005

DRAWN SCC	CHECKED JDW	APPROVED JDW
-----------	-------------	--------------

PROJECT NO. FLORIDA APPROVAL

DRAWING NO. FL300-FPA

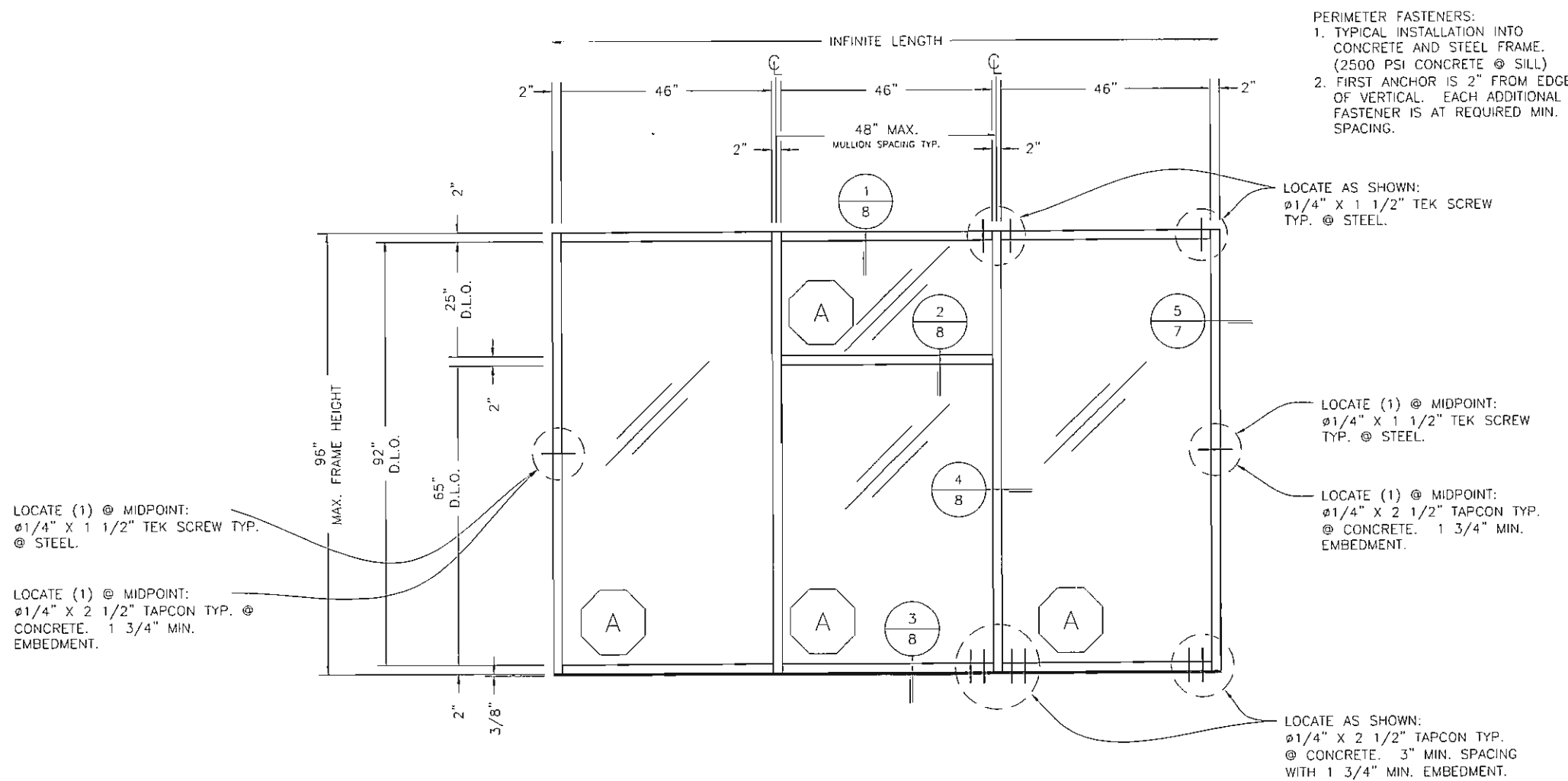
SHEET 2 OF 15

DRAWINGS FOR
 FLORIDA
 PRODUCT APPROVAL

REV	BY	DATE	DESCRIPTION

Coral
 Architectural Products
 3010 RICE MINE ROAD, TUSCALOOSA, AL 35408
 PHONE: 800-772-7737 FAX: 800-255-7320

S:\ASSEMBLIES & FABRICATION\C.A.P\MOCK-UPS\FPA\FL300\4 TYPICAL ELEVATION STANDARD ALUMINUM MULLION (INTERIOR GLAZE).dwg, 12/29/2005 10:05:48 AM, jph



PERIMETER FASTENERS:
 1. TYPICAL INSTALLATION INTO CONCRETE AND STEEL FRAME. (2500 PSI CONCRETE @ SILL)
 2. FIRST ANCHOR IS 2\"/>

LOCATE (1) @ MIDPOINT:
 Ø1/4\"/>

LOCATE (1) @ MIDPOINT:
 Ø1/4\"/>

LOCATE AS SHOWN:
 Ø1/4\"/>

LOCATE (1) @ MIDPOINT:
 Ø1/4\"/>

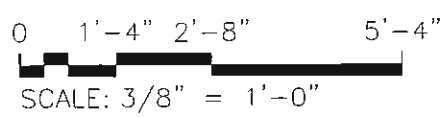
LOCATE (1) @ MIDPOINT:
 Ø1/4\"/>

LOCATE AS SHOWN:
 Ø1/4\"/>

TYPICAL ELEVATION STANDARD ALUMINUM MULLION (INTERIOR GLAZE) -SHORT SPAN-

- NOTES:
1. HORIZONTAL MULLION (DETAIL 2/8) IS OPTIONAL AT ANY LOCATION IN ANY BAY
 2. D.L.O. = DAYLIGHT OPENING
 3. SEE NS213, MS380 & WS500 DOOR PRODUCT APPROVALS
 4. GLASS SIZE = D.L.O. + 7/8\"/>

- TEST PARAMETERS:
1. DESIGN PRESSURE = +30/-40 PSF
 2. AIR TEST AT 6.24 PSF
 3. WATER TEST AT 10 PSF
 4. MAXIMUM DEFLECTION = L/175 OR .549\"/>



BROADWAY ENGINEERING
 1335 West Cass Street
 Tampa, Florida 33606

Elizabeth Brantley
 1/10/06
 Professional Engineer
 Registration No. 38558

FLORIDA PRODUCT APPROVAL DRAWINGS - FL300 FRAMING SYSTEM - FRAMING ELEVATIONS

DATE: 12/29/2005

DRAWN: SCC, CHECKED: JDW, APPROVED: JDW

PROJECT NO.: FLORIDA APPROVAL

DRAWING NO.: FL300-FPA

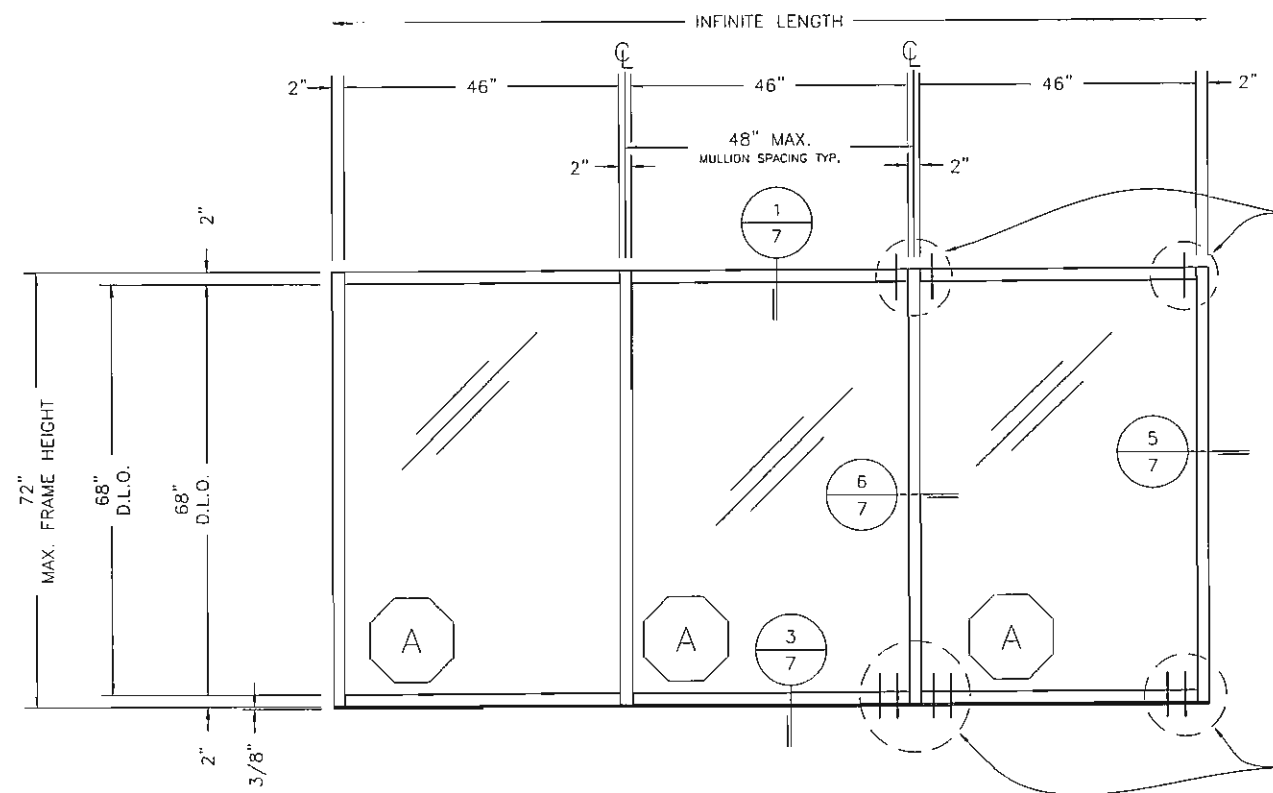
SHEET: 4 OF 15

DRAWINGS FOR FLORIDA PRODUCT APPROVAL

REV	BY	DATE	DESCRIPTION

Coral
 Architectural Products
 3010 RICE MINE ROAD, TUSCALOOSA, AL 35406
 PHONE: 800-772-7737 FAX: 800-255-7320

S:\ASSEMBLIES & FABRICATION\C.A.P\MOCK-UPS\FPA\FL3005 TYPICAL ELEVATION LIGHT ALUMINUM MULLION.dwg, 12/29/2005 10:06:02 AM, phowel, \lpp://192.168.9.25



PERIMETER FASTENERS:
 1. TYPICAL INSTALLATION INTO CONCRETE AND STEEL FRAME. (2500 PSI CONCRETE @ SILL)
 2. FIRST ANCHOR IS 2" FROM EDGE OF VERTICAL. EACH ADDITIONAL FASTENER IS AT REQUIRED MIN. SPACING.

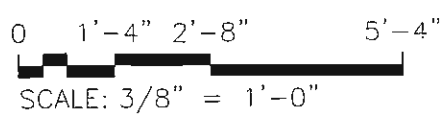
LOCATE AS SHOWN:
 #1/4" X 1 1/2" TEK SCREW TYP. @ STEEL.

LOCATE AS SHOWN:
 #1/4" X 2 1/2" TAPCON TYP. @ CONCRETE. 3" MIN. SPACING WITH 1 3/4" MIN. EMBEDMENT.

TYPICAL ELEVATION LIGHT ALUMINUM MULLION -SHORT SPAN-

- NOTES:
1. HORIZONTAL MULLION (DETAIL 2/7) IS OPTIONAL AT ANY LOCATION IN ANY BAY
 2. D.L.O. = DAYLIGHT OPENING
 3. SEE NS213, MS380 & WS500 DOOR PRODUCT APPROVALS
 4. GLASS SIZE = D.L.O. + 7/8"

- TEST PARAMETERS:
1. DESIGN PRESSURE = +/-60 PSF
 2. MAXIMUM DEFLECTION = .411"



BROADWAY ENGINEERING
 1335 West Cass Street
 Tampa, Florida 33606

Elizabeth Broadway
 Elizabeth A. Broadway, P.E.
 Professional Engineer
 Registration No. 38558
 1/10/06

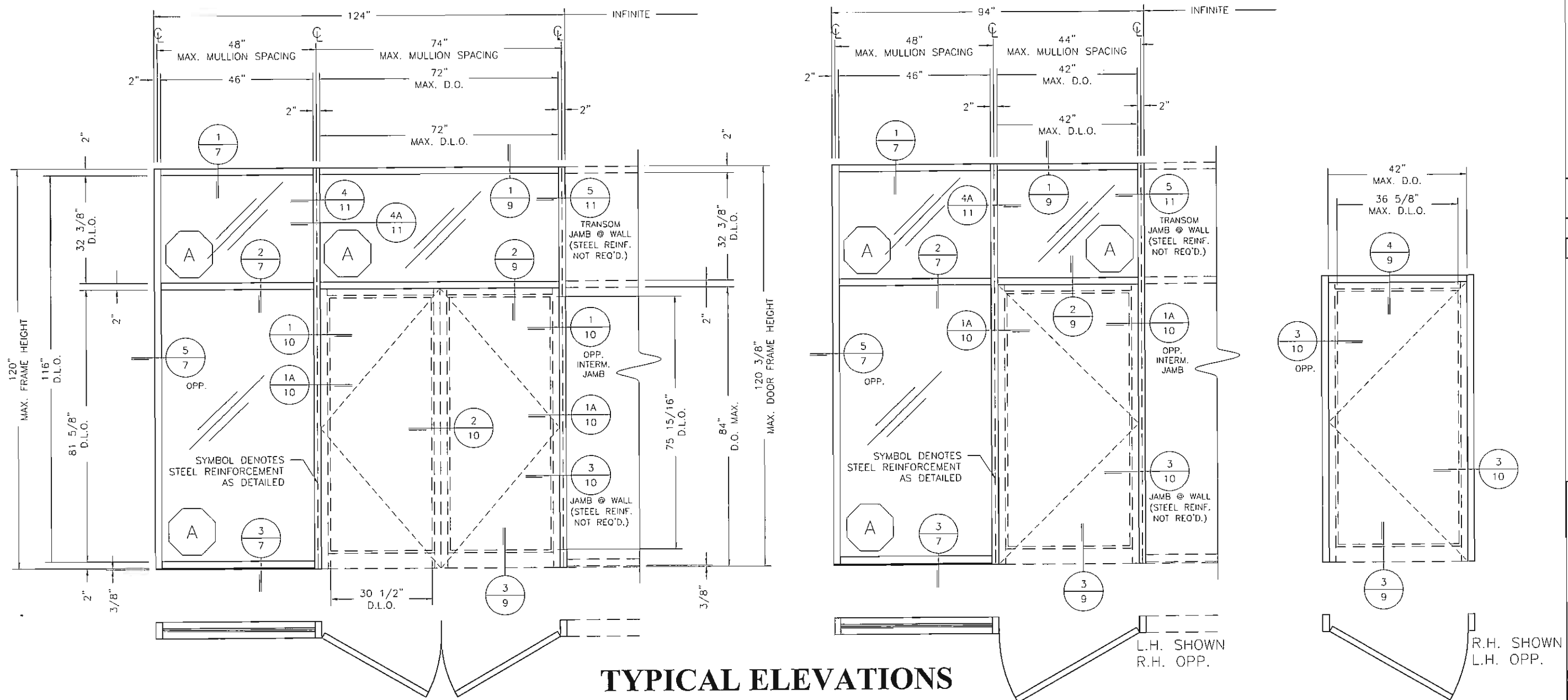
DRAWINGS FOR
 FLORIDA
 PRODUCT APPROVAL

REV	BY	DATE	DESCRIPTION

Coral
 Architectural Products
 3010 RICE MINE ROAD, TUSCALOOSA, AL 35408
 PHONE: 800-772-7737 FAX: 800-255-7320

FLORIDA PRODUCT
 APPROVAL DRAWINGS
 - FL300 FRAMING SYSTEM -
 FRAMING ELEVATIONS

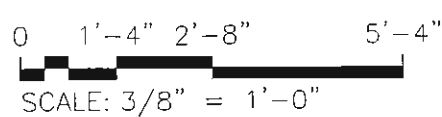
DATE	12/29/2005	
DRAWN	CHECKED	APPROVED
SCC	JDW	JDW
PROJECT NO.	FLORIDA APPROVAL	
DRAWING NO.	FL300-FPA	
SHEET	5 OF 15	



TYPICAL ELEVATIONS WITH DOORS -LONG SPAN-

- NOTES:
- 1. SEE SHEETS 13, 14, AND 15 FOR PERIMETER FASTENER SCHEDULE AND LOCATIONS FOR ELEVATIONS WITH DOORS.
 - 2. D.L.O. = DAYLIGHT OPENING; D.O. = DOOR OPENING
 - 3. DOORS ARE SHOWN ON SEPERATE SUBMISSION: SEE NS213, MS380 & WS500 DOOR PRODUCT APPROVALS

TEST PARAMETERS:
1. DESIGN PRESSURE = +/-60 PSF



BROADWAY ENGINEERING
 1335 West Cass Street
 Tampa, Florida 33606

Elizabeth Broadway
 Elizabeth Broadway, P.E.
 Professional Engineer
 Registration No. 38558

1/10/06

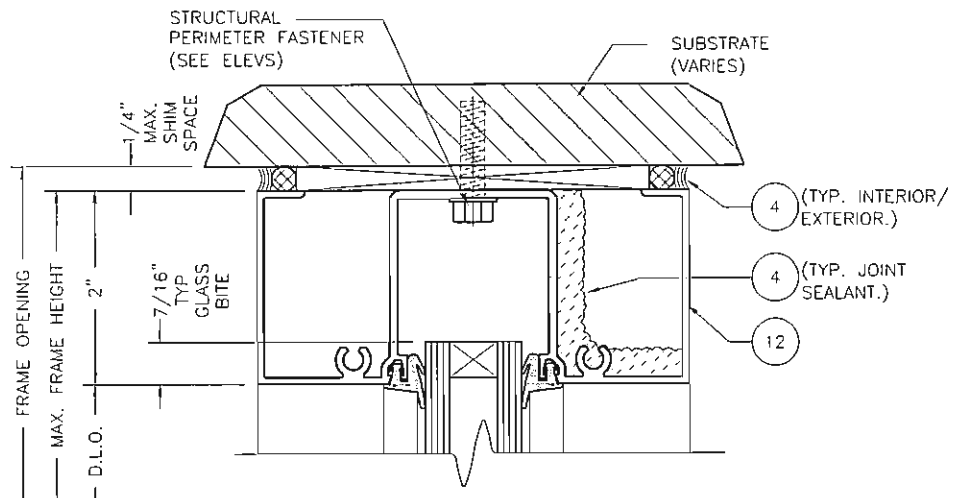
DRAWINGS FOR
FLORIDA
PRODUCT APPROVAL

DATE		12/29/2005
DRAWN	CHECKED	APPROVED
SCC	JDW	JDW
PROJECT NO. FLORIDA APPROVAL		
DRAWING NO. FL300-FPA		
SHEET 6 OF 15		

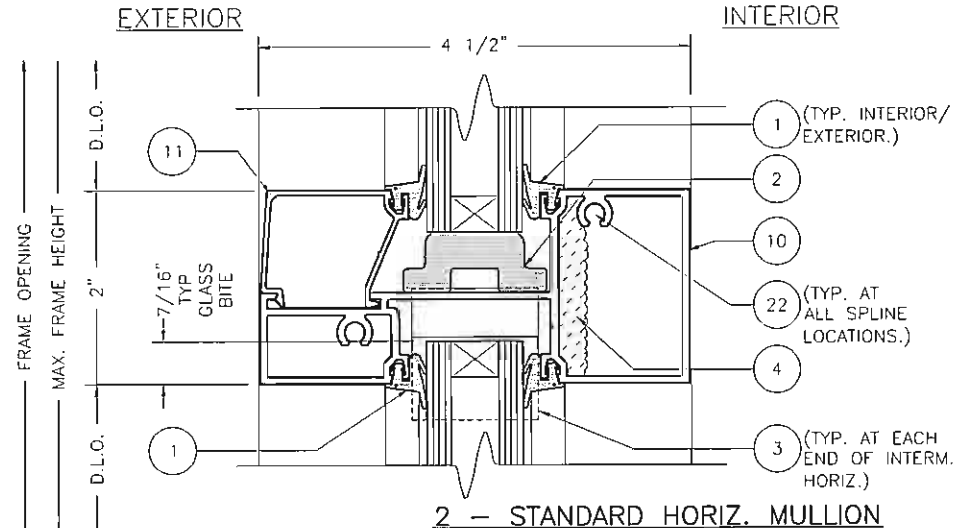
FLORIDA PRODUCT APPROVAL DRAWINGS - FL300 FRAMING SYSTEM - FRAMING ELEVATIONS

Coral	Architectural Products
3010 RICE MINE ROAD, TUSCALOOSA, AL 35406	PHONE: 800-772-7737 FAX: 800-255-7320

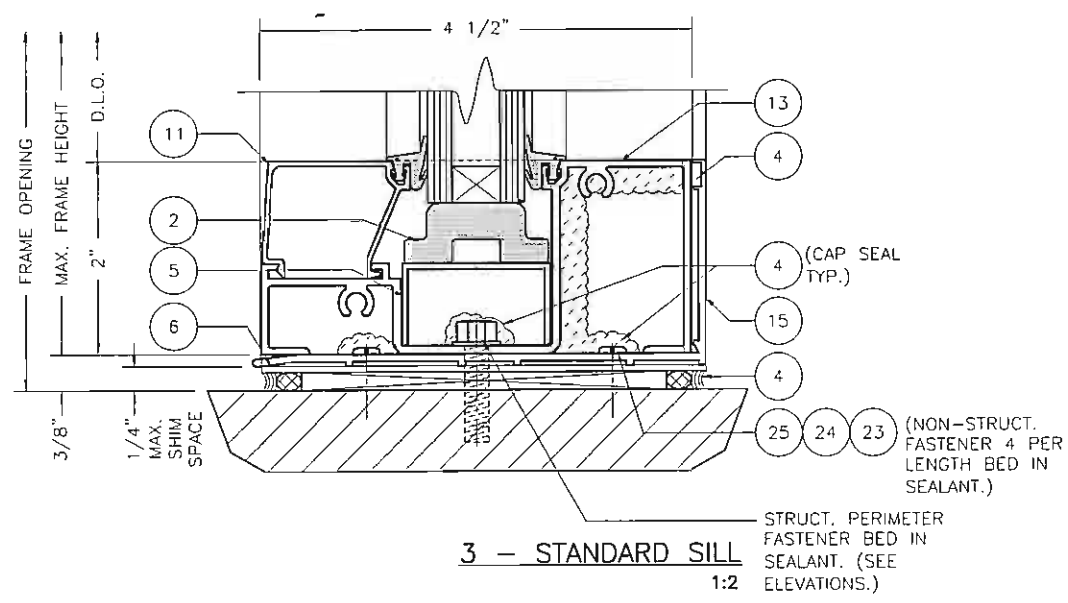
S:\ASSEMBLIES & FABRICATION\C.A.P\MOCK-UPS\FPA\FL3007 STANDARD FRAMING DETAILS.dwg, 12/29/2005 10:07:06 AM, phowei, \lpp://192.168.9.25\CAP_Prt, Copyright



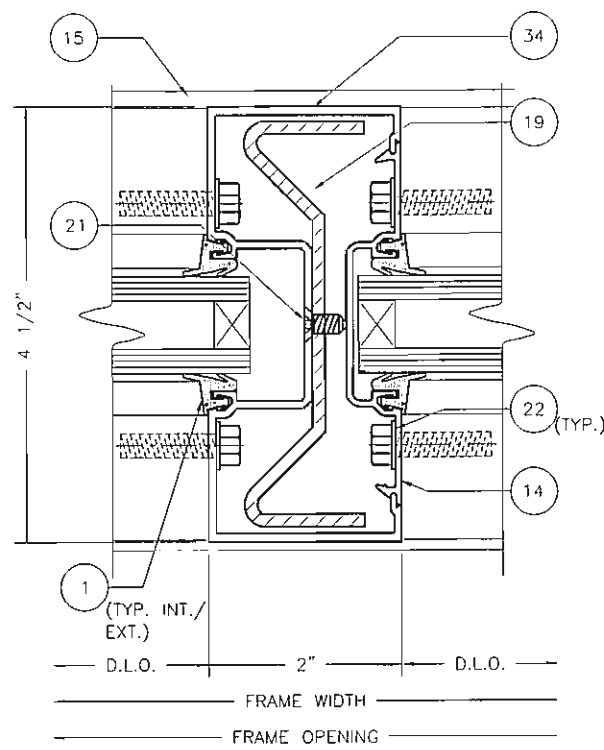
1 - STANDARD HEAD
1:2



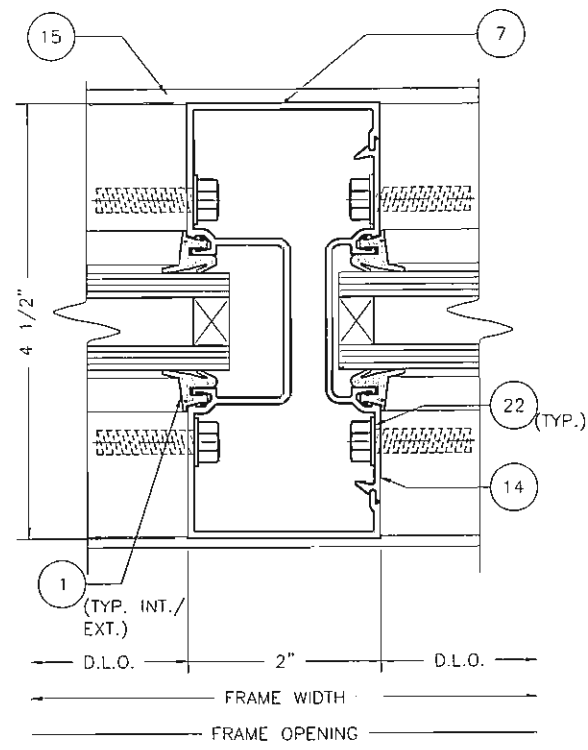
2 - STANDARD HORIZ. MULLION
1:2



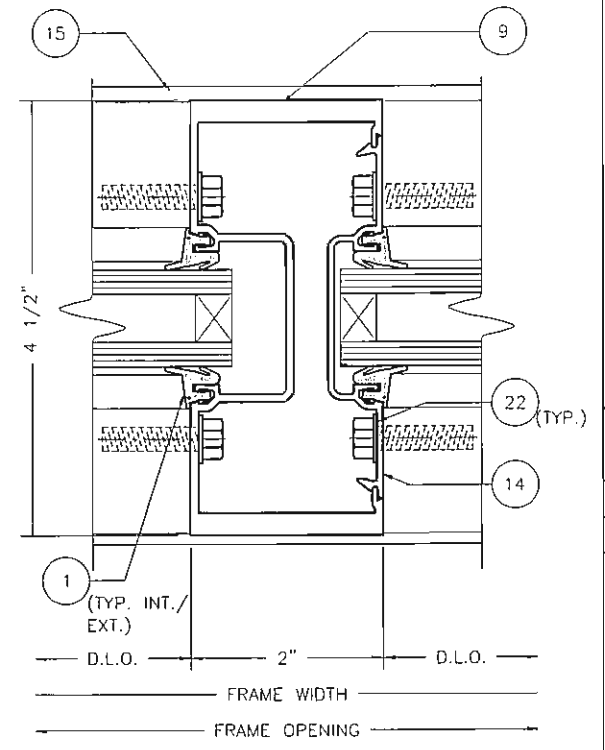
3 - STANDARD SILL
1:2



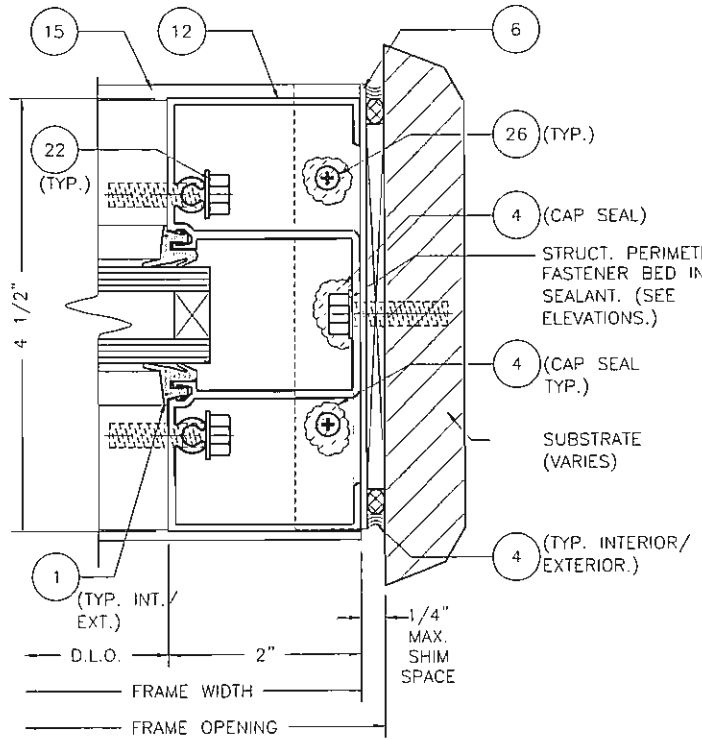
4 - STANDARD VERT. MULLION WITH STEEL
1:2



6 - LIGHT VERT. MULLION
1:2



7 - HEAVY VERT. MULLION
1:2



5 - STANDARD JAMB
1:2

BROADWAY ENGINEERING
1335 West Cass Street
Tampa, Florida 33606

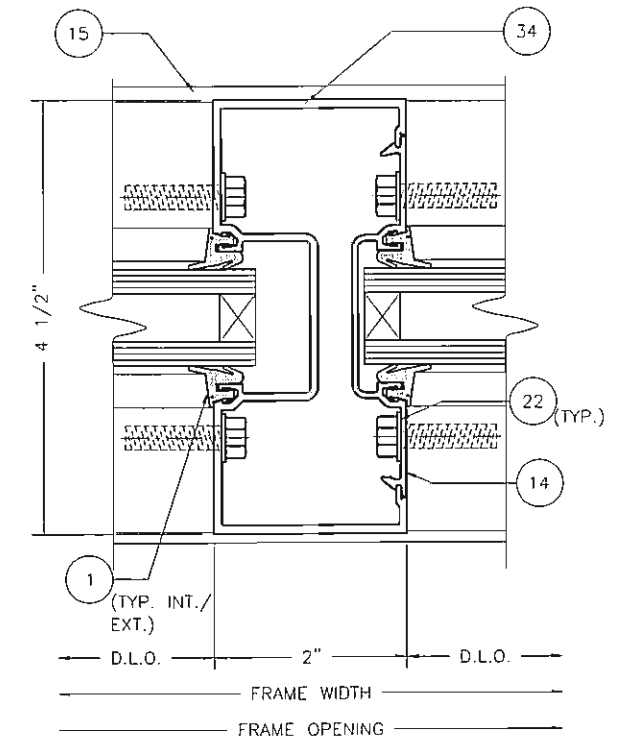
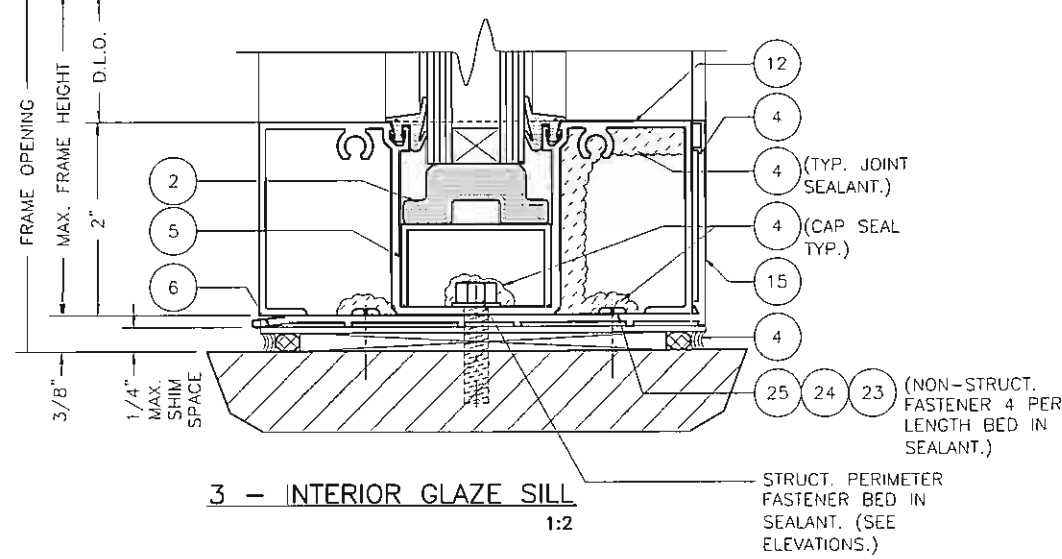
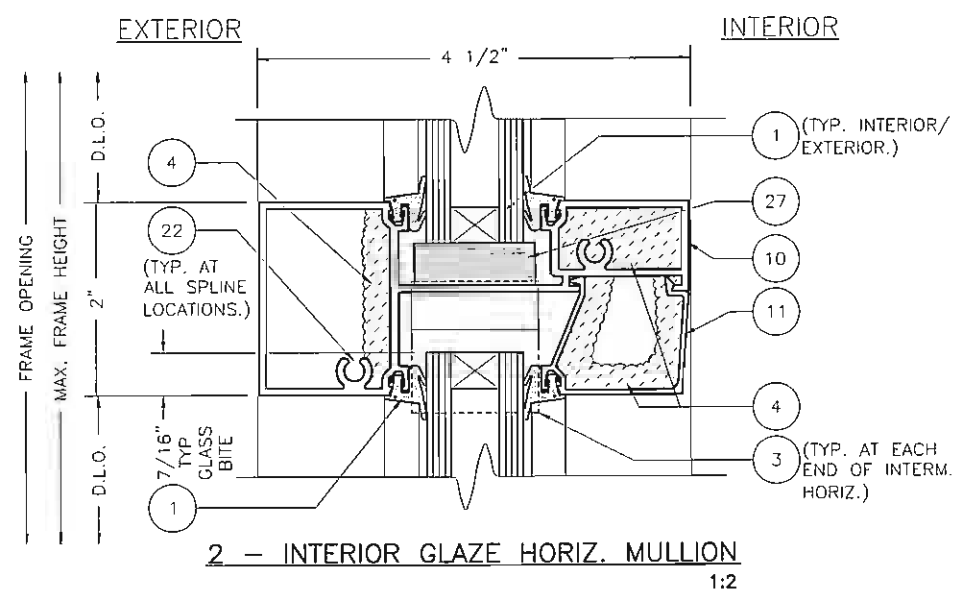
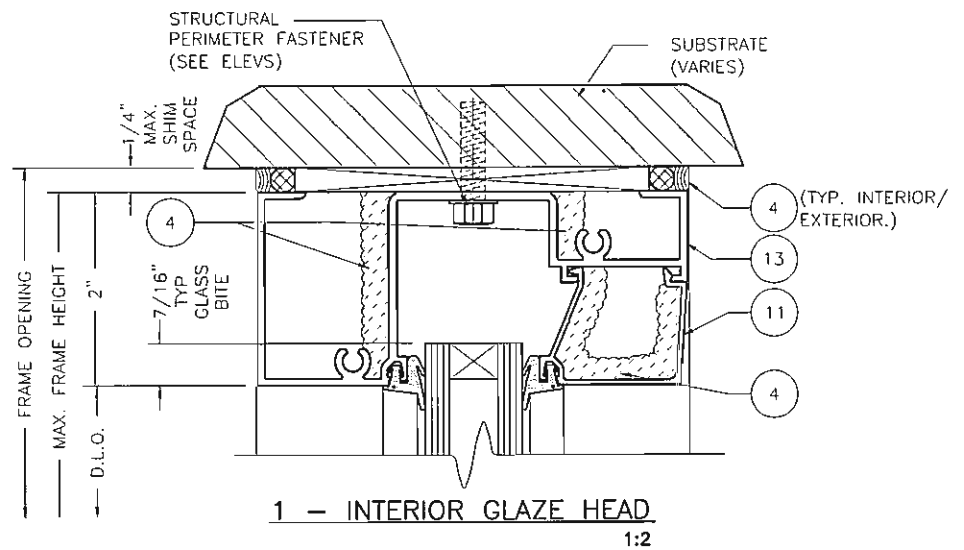
Elizabeth H. Broadway
Elizabeth H. Broadway, P.E.
Professional Engineer
FL Registration No. 38558
1/10/06

**DRAWINGS FOR
FLORIDA
PRODUCT APPROVAL**

FLORIDA PRODUCT APPROVAL DRAWINGS - FL300 FRAMING SYSTEM - FRAMING DETAILS		
DATE	12/29/2005	
DRAWN	CHECKED	APPROVED
SCC	JDW	JDW
PROJECT NO.	FLORIDA APPROVAL	
DRAWING NO.	FL300-FPA	
SHEET	7 OF 15	

REV	BY	DATE	DESCRIPTION

S:\ASSEMBLIES & FABRICATION\C.A.P\MOCK-UPS\FPA\FL300\18 INTERIOR GLAZE FRAMING DETAILS.dwg, 12/29/2005 10:07:23 AM, phowel, \\ipp://192.168.9.25\CAP_Prt, Cop



BROADWAY ENGINEERS
1335 West Cass Street
Tampa, Florida 33606

Elizabeth Broadway
Elizabeth A. Broadway, P.E.
Professional Engineer
FL Registration No. 38558
1/10/06

DRAWINGS FOR
FLORIDA
PRODUCT APPROVAL

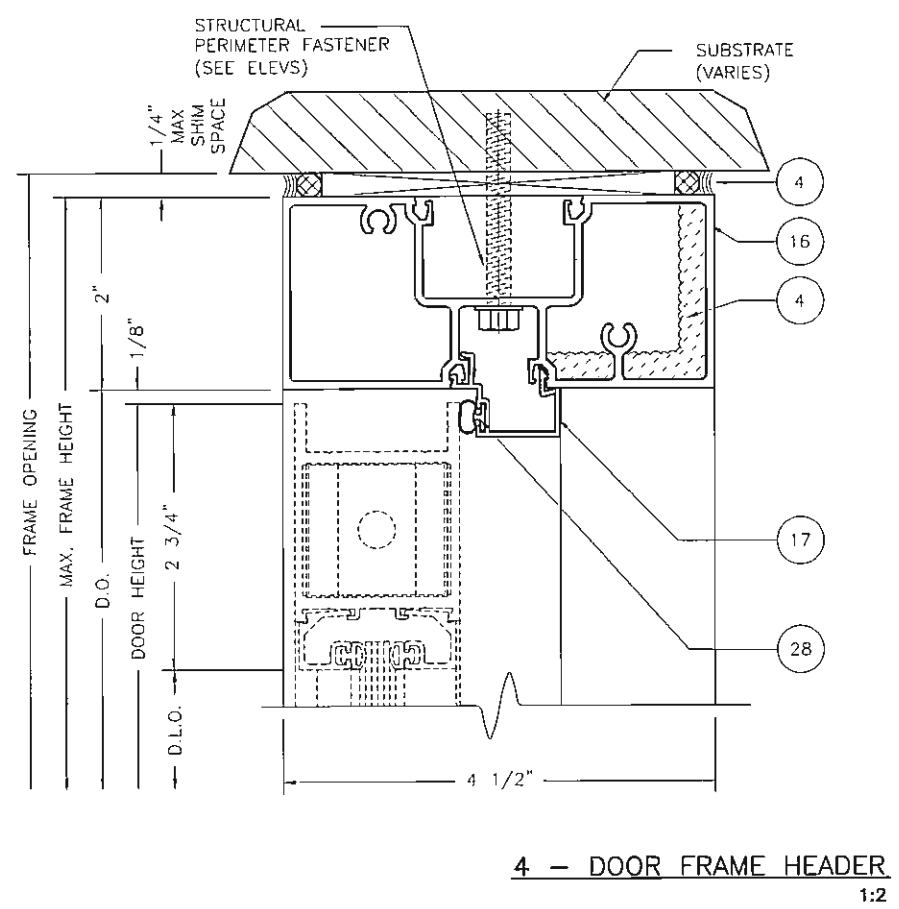
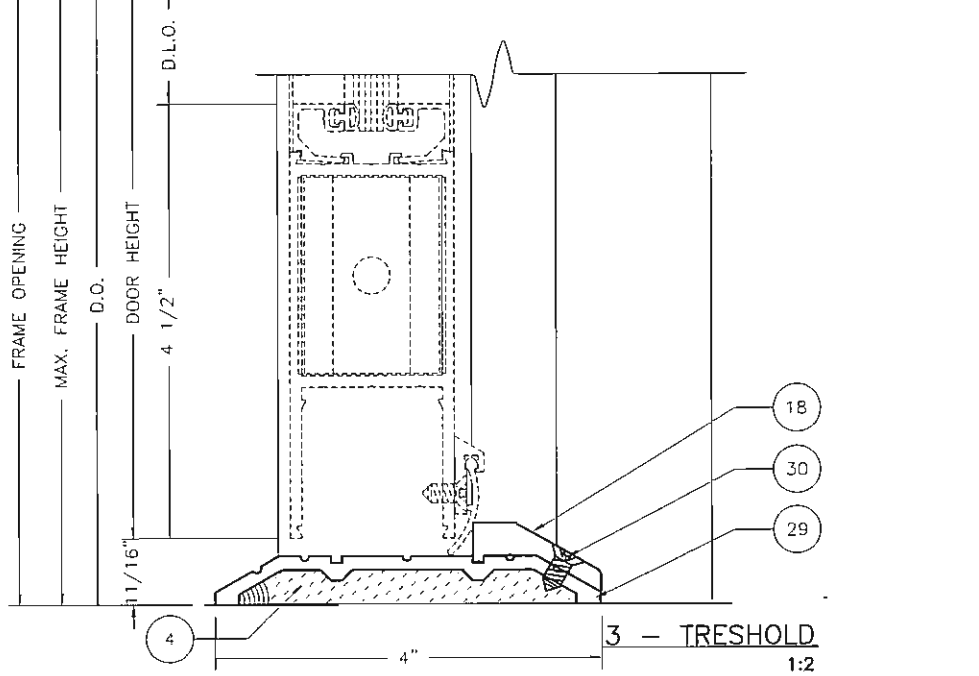
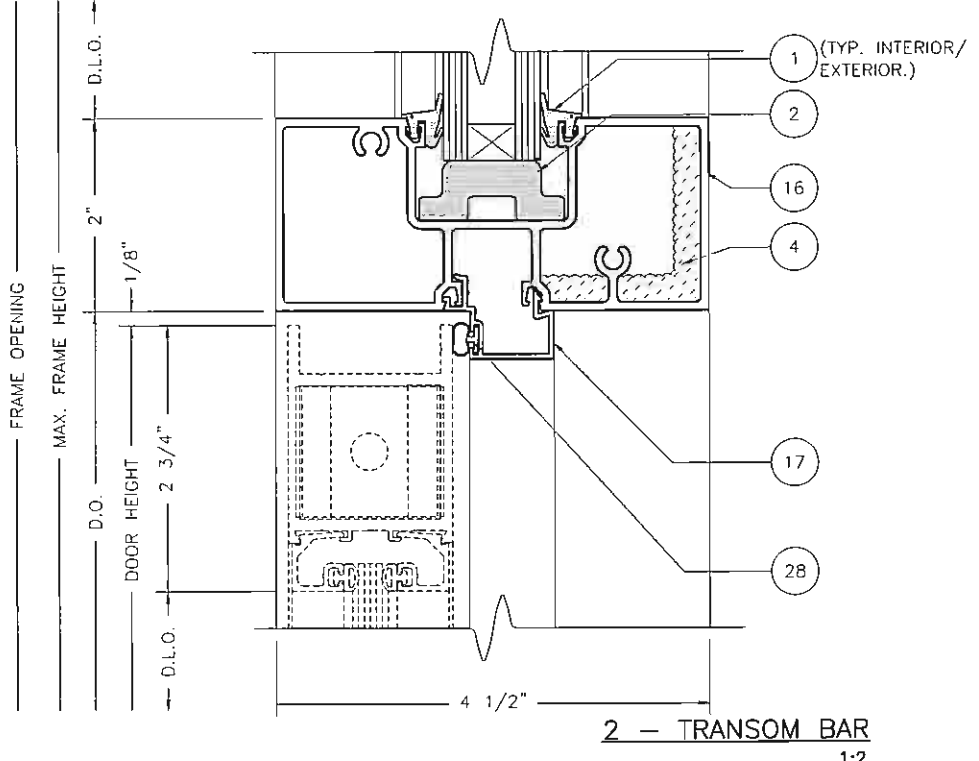
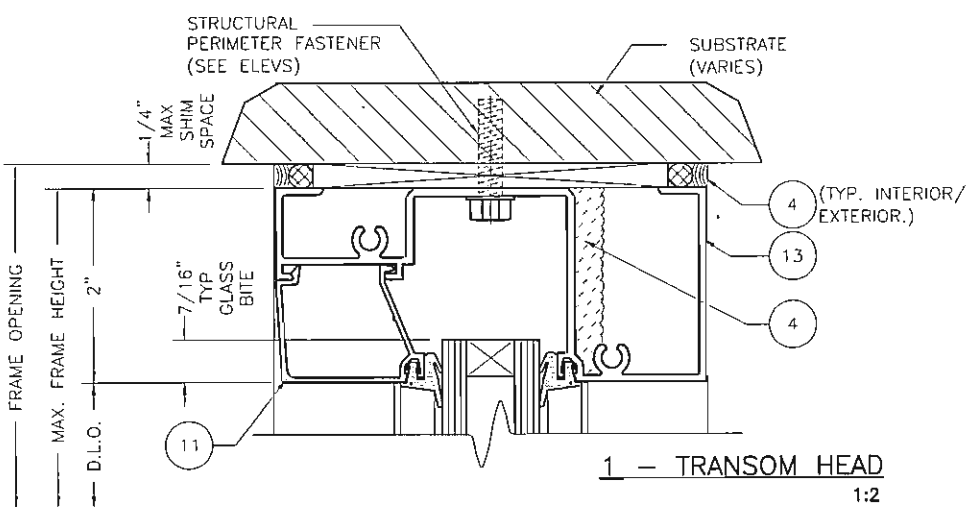
REV	BY	DATE	DESCRIPTION

Coral
Architectural Products
3010 RICE MINE ROAD, TUSCALOOSA, AL 35408
PHONE: 800-772-7737 FAX: 800-255-7320

FLORIDA PRODUCT
APPROVAL DRAWINGS
- FL300 FRAMING SYSTEM -
FRAMING DETAILS

DATE	12/29/2005	
DRAWN	CHECKED	APPROVED
SCC	JDW	JDW
PROJECT NO.	FLORIDA APPROVAL	
DRAWING NO.	FL300-FPA	
SHEET	8 OF 15	

S:\ASSEMBLIES & FABRICATION\C.A.P\MOCK-UPS\FPA\FL30019 DOOR FRAMING DETAILS.dwg, 12/29/2005 10:07:39 AM, phowel, \\pp://192.168.9.25\CAP_Prt, Copyright: Co. a



BROADWAY ENGINEERING
1335 West Cass Street
Tampa, Florida 33606

Elizabeth Broadway
Elizabeth A. Broadway, P.E.
Professional Engineer
FL Registration No. 38558
11/10/06

DRAWINGS FOR
FLORIDA
PRODUCT APPROVAL

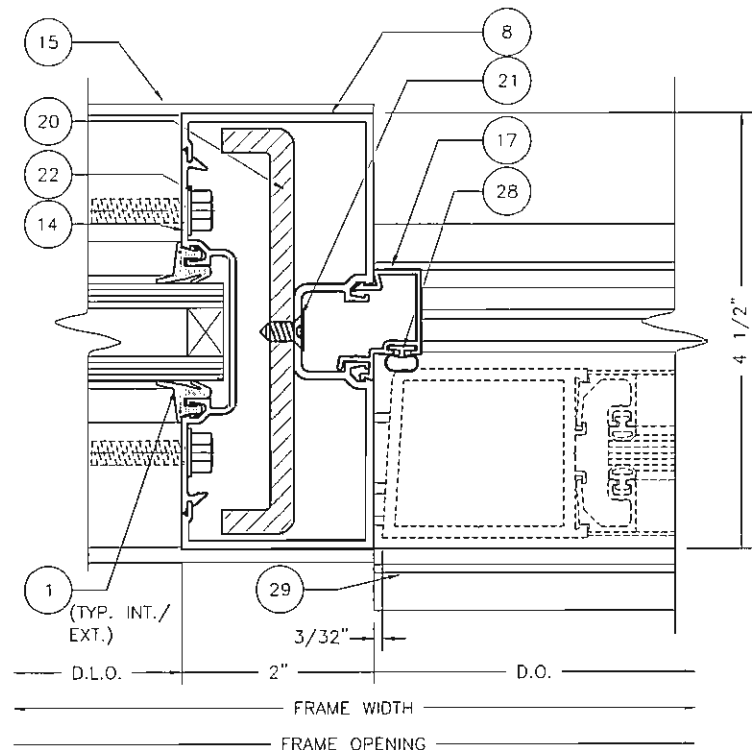
FLORIDA PRODUCT
APPROVAL DRAWINGS
- FL300 FRAMING SYSTEM -
FRAMING DETAILS

DATE 12/29/2005		
DRAWN SCC	CHECKED JDW	APPROVED JDW
PROJECT NO. FLORIDA APPROVAL		
DRAWING NO. FL300-FPA		
SHEET 9 OF 15		

REV	BY	DATE	DESCRIPTION

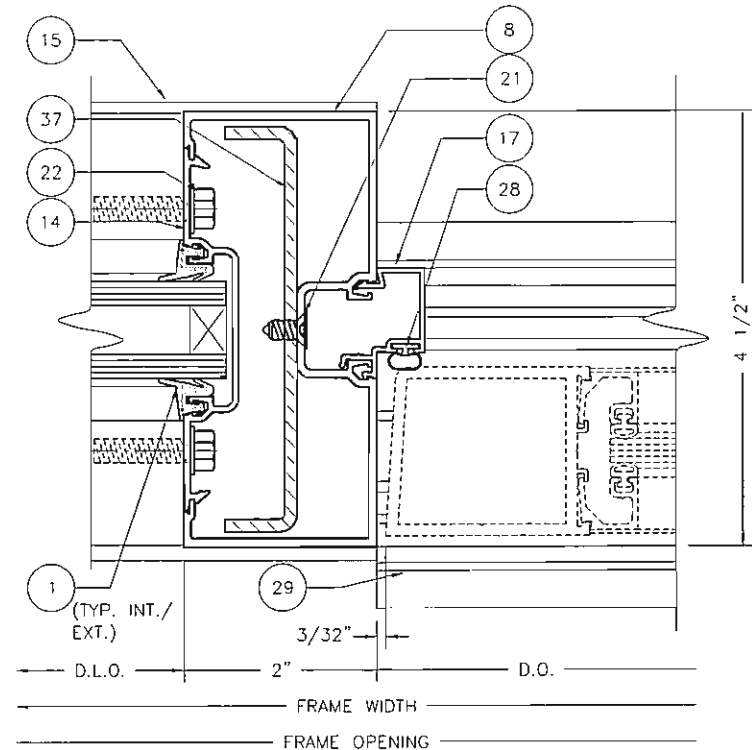
Coral
Architectural Products
3010 RICE MINE ROAD, TUSCALOOSA, AL 35408
PHONE: 800-772-7737 FAX: 800-255-7320

S:\ASSEMBLIES & FABRICATION\A.P\MOCK-UPS\FPA\FL300\10 DOOR FRAMING DETAILS.dwg, 12/29/2005 10:07:53 AM, phowel, \\pp://192.168.9.25\CAP_Prt, Copyright: Cor



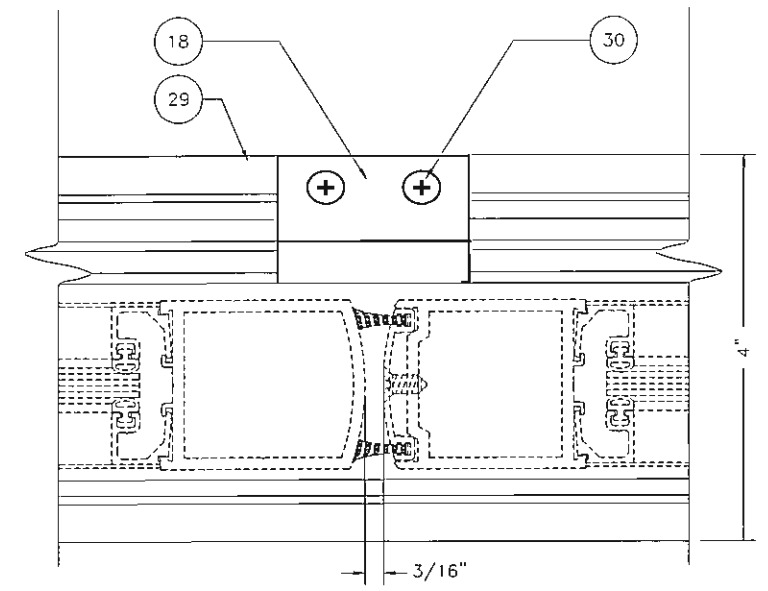
1 - INTERM. DOOR JAMB
1:2

NOTE: SEE CHART 1

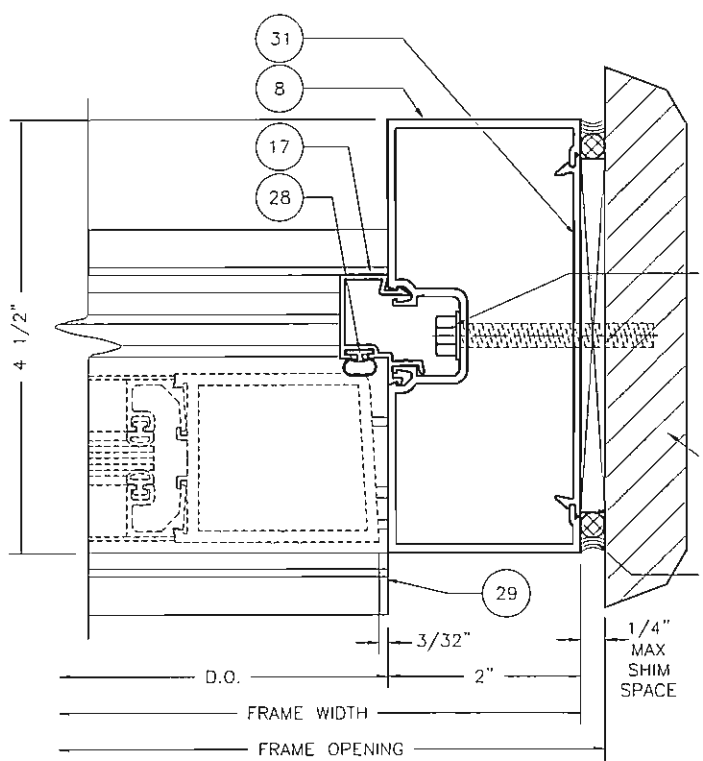


1A - INTERM. DOOR JAMB
1:2

NOTE: SEE CHART 1



2 - DOOR JAMB AT WALL
1:2



3 - INTERM. TRANSOM JAMB
1:2

CHART 1

INTERM. DOOR JAMB LIMITATIONS		
DESIGN PRESSURE	DOOR WIDTH	WITH STEEL
0 - 28 PSF	42"	- 0 -
29 - 65 PSF	72"	SR102
0 - 20 PSF	72"	- 0 -
21 - 46 PSF	72"	SR102
47 - 60 PSF	72"	SR105

BROADWAY ENGINEERING
1335 West Cass Street
Tampa, Florida 33606

Elizabeth Broadway
Elizabeth A. Broadway, P.E.
Professional Engineer
FL Registration No. 38558

1/10/06

DRAWINGS FOR FLORIDA PRODUCT APPROVAL

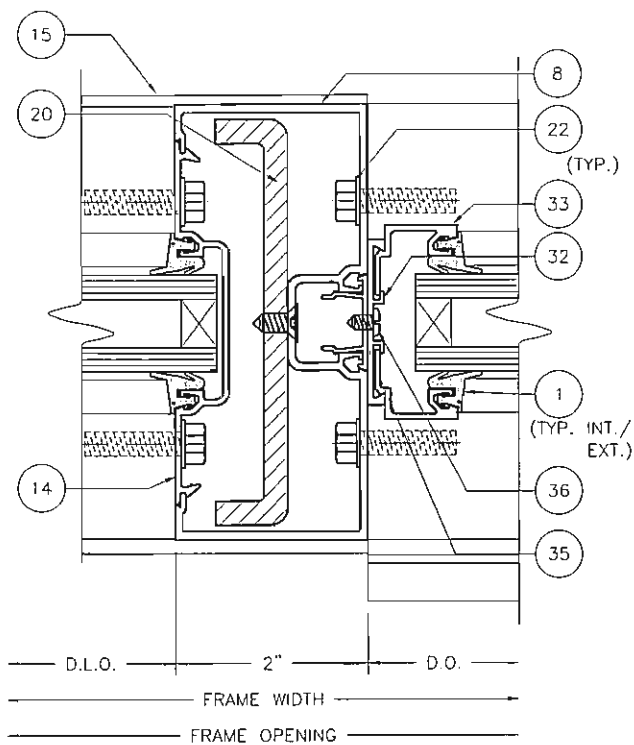
REV	BY	DATE	DESCRIPTION

Coral
Architectural Products
3010 RICE MINE ROAD, TUSCALOOSA, AL 35408
PHONE: 800-772-7737 FAX: 800-255-7320

FLORIDA PRODUCT APPROVAL DRAWINGS - FL300 FRAMING SYSTEM - FRAMING DETAILS

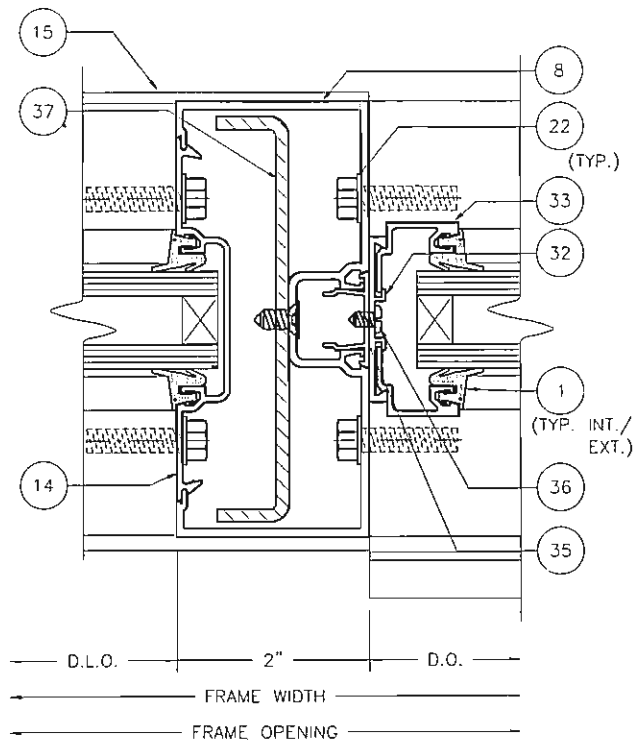
DATE	12/29/2005	
DRAWN	CHECKED	APPROVED
SCC	JDW	JDW
PROJECT NO.	FLORIDA APPROVAL	
DRAWING NO.	FL300-FPA	
SHEET	10 OF 15	

S:\ASSEMBLIES & FABRICATION\C.A.P\MOCK-UPS\FPA\FL300\11 DOOR FRAMING DETAILS.dwg, 12/29/2005 10:08:04 AM, phowel, \lpp://192.168.9.25\CAP_Prt, Copyright: Cor



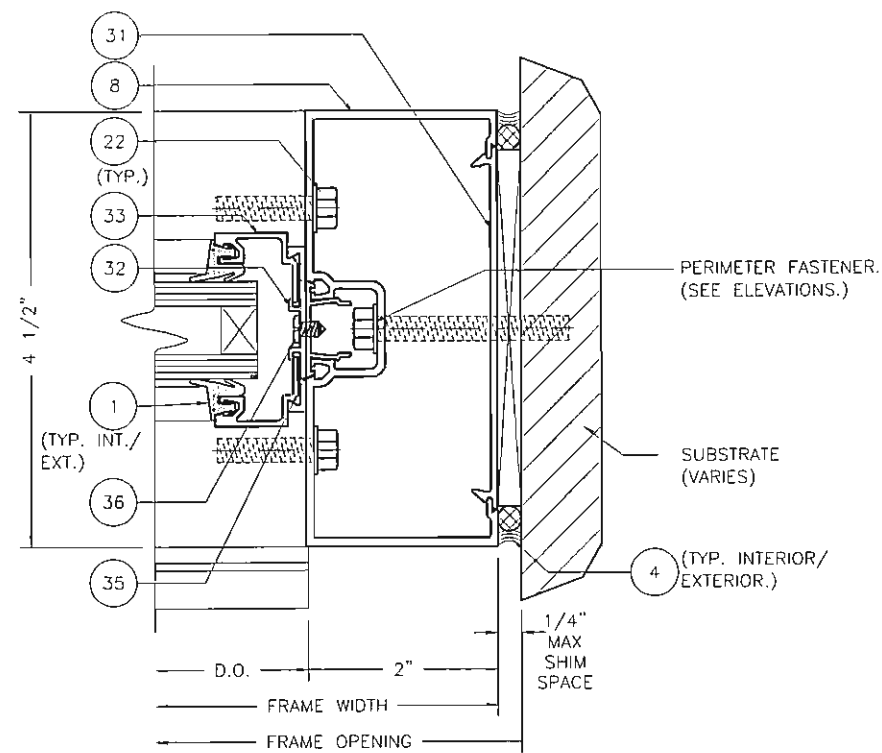
4 - INTERM. TRANSOM JAMB
1:2

NOTE: SEE CHART 1/ SHEET 10



4A - INTERM. TRANSOM JAMB
1:2

NOTE: SEE CHART 1/ SHEET 10



5 - TRANSOM JAMB AT WALL
1:2

BROADWAY ENGINEERING
1335 West Cass Street
Tampa, Florida 33606

Elizabeth A. Broadway
Elizabeth A. Broadway, P.E.
Professional Engineer
FL Registration No. 38558
1/10/06

DRAWINGS FOR
FLORIDA
PRODUCT APPROVAL

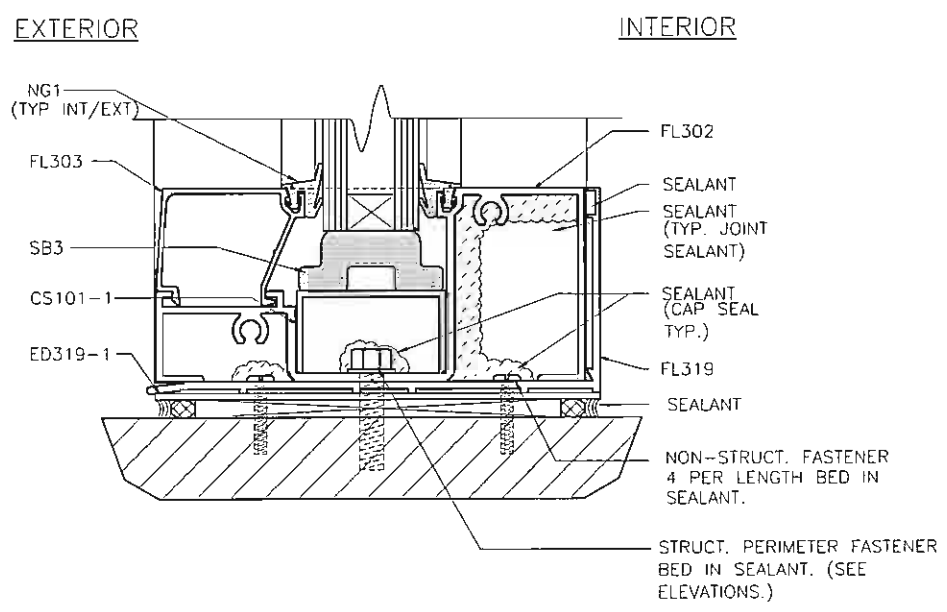
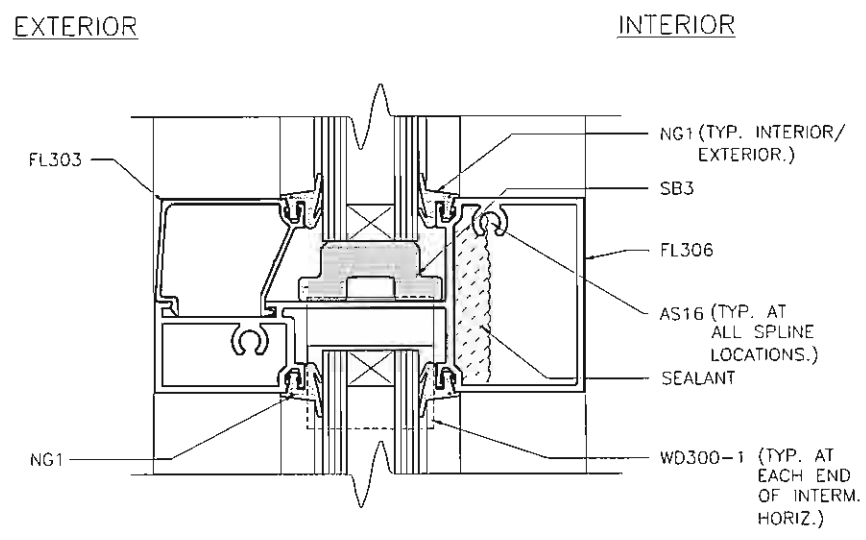
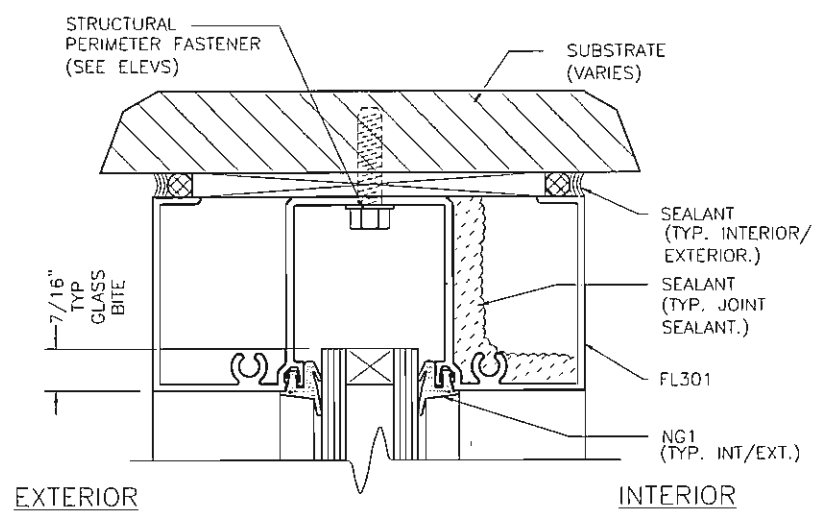
FLORIDA PRODUCT
APPROVAL DRAWINGS
- FL300 FRAMING SYSTEM -
FRAMING DETAILS

DATE	12/29/2005	
DRAWN	CHECKED	APPROVED
SCC	JDW	JDW
PROJECT NO.	FLORIDA APPROVAL	
DRAWING NO.	FL300-FPA	
SHEET	11 OF 15	

Corral
Architectural Products
3010 RICE MINE ROAD, TUSCALOOSA, AL 35408
PHONE: 800-772-7737 FAX: 800-255-7320

REV	BY	DATE	DESCRIPTION

S:\ASSEMBLIES & FABRICATION\C.A.P\MOCK-UPS\FPA\FL300\12 GLASS SCHEDULE.dwg, 12/29/2005 10:08:11 AM, phowel, \lpp\192.168.9.25\CAP_Prt, Copyright: Coral Arch



GLASS SCHEDULE				
GLASS MARK SYMBOL	GLASS TYPE	MANUFACTURER	MAXIMUM DLO SIZE	MAXIMUM SQUARE FEET
A	1/4" TEMPERED OUTER SURFACE, 1/2" AIR SPACE, 1/4" TEMPERED INNER SURFACE	VARIES	46 X 92	29.4

OPTIONS AND LIMITATIONS					
DESIGN PRESSURE PSF	INTERM VERTICAL MULLION	WALL JAMB MULLION	MAX MULLION LENGTH	MAX SPAN CL TO CL	QUALIFIED GLASS TYPE
+60/-60	FL316 W/O STEEL	FL301	96"	48"	A
+60/-53	FL315 W/ SR101	FL301	120"	48"	A
+60/-60	FL304 W/O STEEL	FL301	72"	48"	A
+30/-40	FL315 W/O STEEL	FL301	96"	48"	A

BROADWAY ENGINEERING
 1335 West Cass Street
 Tampa, Florida 33606

Elizabeth Broadway
 Elizabeth A. Broadway, P.E.
 Professional Engineer
 FL Registration No. 38558

1/10/06

DRAWINGS FOR
 FLORIDA
 PRODUCT APPROVAL

REV	BY	DATE	DESCRIPTION

Coral
 Architectural Products
 3010 RICE MINE ROAD, TUSCALOOSA, AL 35406
 PHONE: 800-772-7737 FAX: 800-255-7320

FLORIDA PRODUCT
 APPROVAL DRAWINGS
 - FL300 FRAMING SYSTEM -
 GLASS SCHEDULE

DATE	12/29/2005	
DRAWN	CHECKED	APPROVED
SCC	JDW	JDW
PROJECT NO.	FLORIDA APPROVAL	
DRAWING NO.	FL300-FPA	
SHEET	12 OF 15	

S:\ASSEMBLIES & FABRICATION\C.A.P\MOCK-UPS\FPA\FL300\13 BILL OF MATERIALS.dwg, 12/29/2005 10:08:22 AM, phowel, \lpp://192.168.9.25\CAP_Prt, Copyright: Coral Arc

BILL OF MATERIALS

ITEM	P/N	DESCRIPTION	DIMENSIONS	MATERIAL	MANUFACTURE	NOTES
1	NG1	GLAZING GASKET	.197 SPACE	EPDM	VARIES	USED ON EXT. AND INT.
2	SB3	SETTING BLOCK	1.50 X 4.00 X .625	EPDM	VARIES	
3	WD300-1	WATER DEFLECTOR	VARIABLE SPACE	RIGID PVC	CORAL	LOCATE ONE AT EACH END OF INTERMEDIATE HORIZ.
4	795	JOINT/ PERIMETER SEALANT	VARIABLE SPACE	SILICONE	TREMCO	
5	CS101-1	SETTING CHAIR	.853 X 1.544 X .062	6063-T6 ALUMINUM	CORAL	
6	ED319-1	END DAM	.75 X 2.188 X .062	6063-T6 ALUMINUM	CORAL	FABRICATED LENGTH = 4.625"
7	FL304	LIGHT VERTICAL MULLION/JAMB	2.00 X 4.5 X .070	6063-T6 ALUM.	CORAL	
8	FL309	DOOR JAMB	2.00 X 4.5 X .080	6063-T6 ALUM.	CORAL	
9	FL316	HEAVY VERTICAL MULLION	2.00 X 4.5 X .190	6063-T6 ALUM.	CORAL	
10	FL306	HORIZONTAL MULLION	2.00 X 4.460 X .070	6063-T6 ALUMINUM	CORAL	
11	FL303	GLASS STOP	1.207 X 1.543 X .050	6063-T6 ALUMINUM	CORAL	
12	FL301	HEAD/WALL JAMB	2.00 X 4.5 X .070	6063-T6 ALUMINUM	CORAL	
13	FL302	SILL/HEAD	2.00 X 4.460 X .070	6063-T6 ALUMINUM	CORAL	
14	FL305	OPEN BACK POCKET FILLER	.562 X 3.75 X .062	6063-T6 ALUM.	CORAL	
15	FL319	SUBSILL FLASHING	2.125 X 4.714 X .078	6063-T6 ALUMINUM	CORAL	
16	FL307	DOOR HEADER/TRANSOM BAR	2.00 X 4.500 X .085	6063-T6 ALUM.	CORAL	DOOR JAMB AT WALL
17	DS200	DOOR STOP	.500 X 1.019 X .050	6063-T6 ALUM.	CORAL	
18	DP200-1	PANIC STOP	1.323 X .402 X .188	6063-T6 ALUM.	CORAL	FABRICATED LENGTH = 2.00"
19	SR101	10 GA. FORMED GALV. STL REINFORCING	1.25 X 4.18 X .134	GALVANIZED STEEL	VARIES	
20	SR105	1/4" FORMED GALV. STL REINFORCING	.75 X 4.188 X .250	GALVANIZED STEEL	VARIES	USED AT INTERMEDIATE DOOR JAMB
21	AS23	ATTACH SR101/SR102 TO MULLIONS	#12-24 X 3/8" UCPHH			ATTACH 12" O.C.
22	AS16	TYPICAL SPLINE SCREW	#14 X 1" HHSTS	STEEL	VARIES	TYPICAL SPLINE SCREW
23	FASTENER	FOR ATTACHING SUBSILL TO STEEL SUBSTRATE	3/16" X 1" PH SELF DRILLING	STEEL	TEK	
24	FASTENER	FOR ATTACHING SUBSILL TO CONCRETE SUBSTRATE	3/16" X 2" SHWH	STEEL	TAPCON	
25	FASTENER	FOR ATTACHING SUBSILL TO WOOD SUBSTRATE	3/16" X 2" PHSMS	STEEL	VARIES	
26	AS21	ATTACH ED319-1 TO FL319	#6 X 3/8" X PPH	STEEL		ATTACH @ 12" ON CENTER
27	SB4	SETTING BLOCK	1.25 X 4 X .438	EPDM	VARIES	
28	NG5	DOOR STOP WEATHERING	.125 SPACE	EPDM	VARIES	
29	TH4	THRESHOLD	.50 X 4.00 X .125	6063-T6 ALUM.	CORAL	
30	AS5	FASTENER	3/10 X 1/2" PFH	STEEL	VARIES	
31	CS104	FLAT FILLER PLATE	.265 X 3.750 X .070	6063-T6 ALUM.	CORAL	
32	CS110	TRANSOM SASH	.187 X 1.710 X .063	6063-T6 ALUM.	CORAL	
33	CS111	GLASS STOP	.855 X .722 X .055	6063-T6 ALUM.	CORAL	
34	FL315	STANDARD VERT. MULLION	2.00 X 4.5 X .080	6063-T6 ALUM.	CORAL	
35	CS105	POCKET FILLER	.480 X 1 X .040	6063-T6 ALUM.	CORAL	
36	AS2	FASTENER	#8 X 1/2" PPH	STEEL	VARIES	ATTACH @ 12" ON CENTER
37	SR102	10 GA. FORMED GALV. STL REINFORCING	.75 X 4.188 X .134	GALVANIZED STEEL	VARIES	USED AT INTERMEDIATE DOOR JAMB

BROADWAY ENGINEERING
 1335 West Cass Street
 Tampa, Florida 33606

Elizabeth Broadway
 Elizabeth A. Broadway, P.E.
 Professional Engineer
 FL Registration No. 38558
 1/10/06

DRAWINGS FOR
 FLORIDA
 PRODUCT APPROVAL

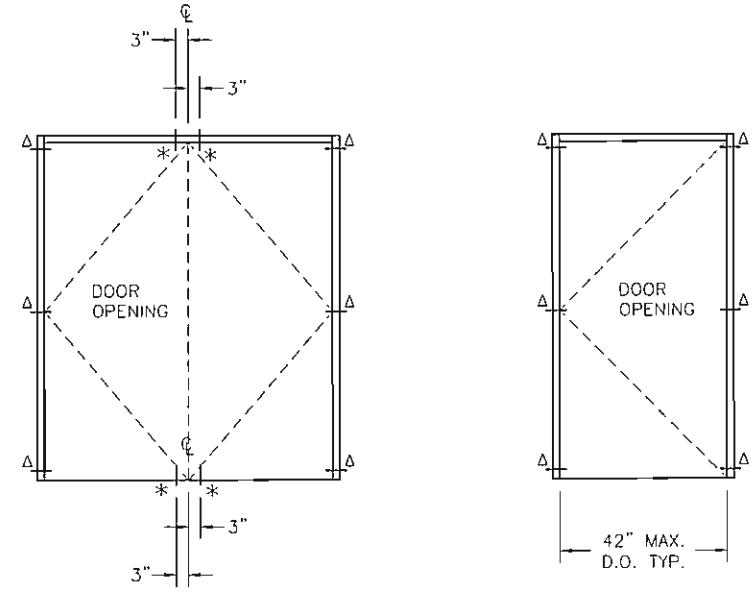
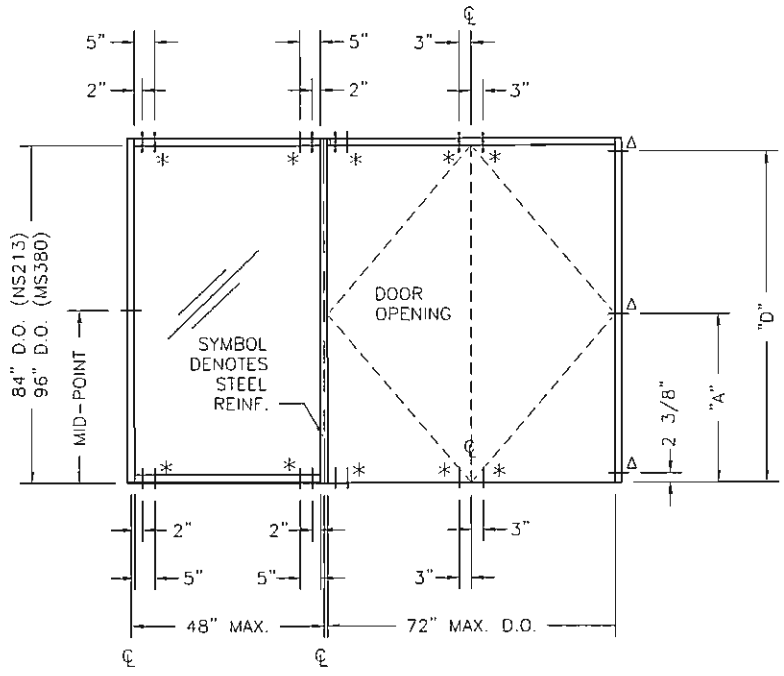
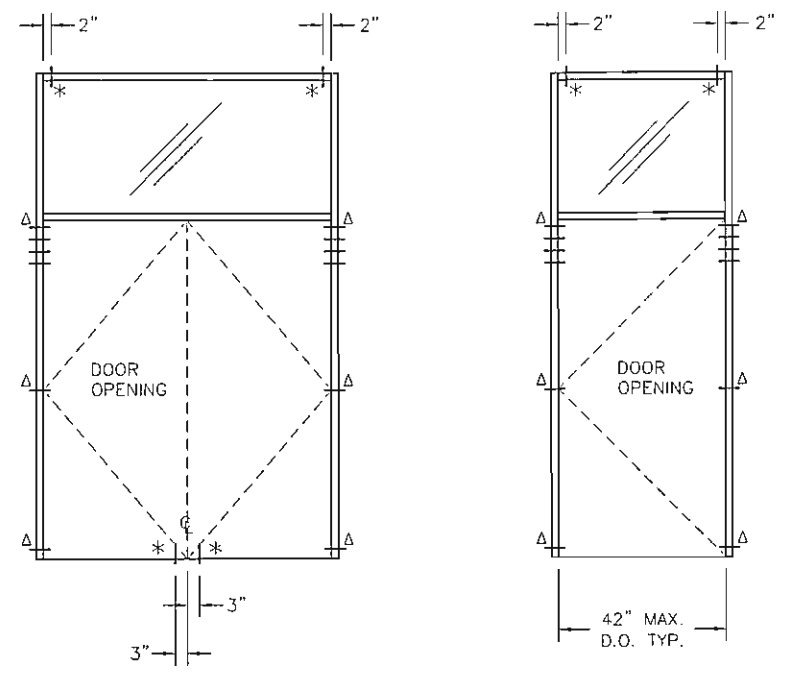
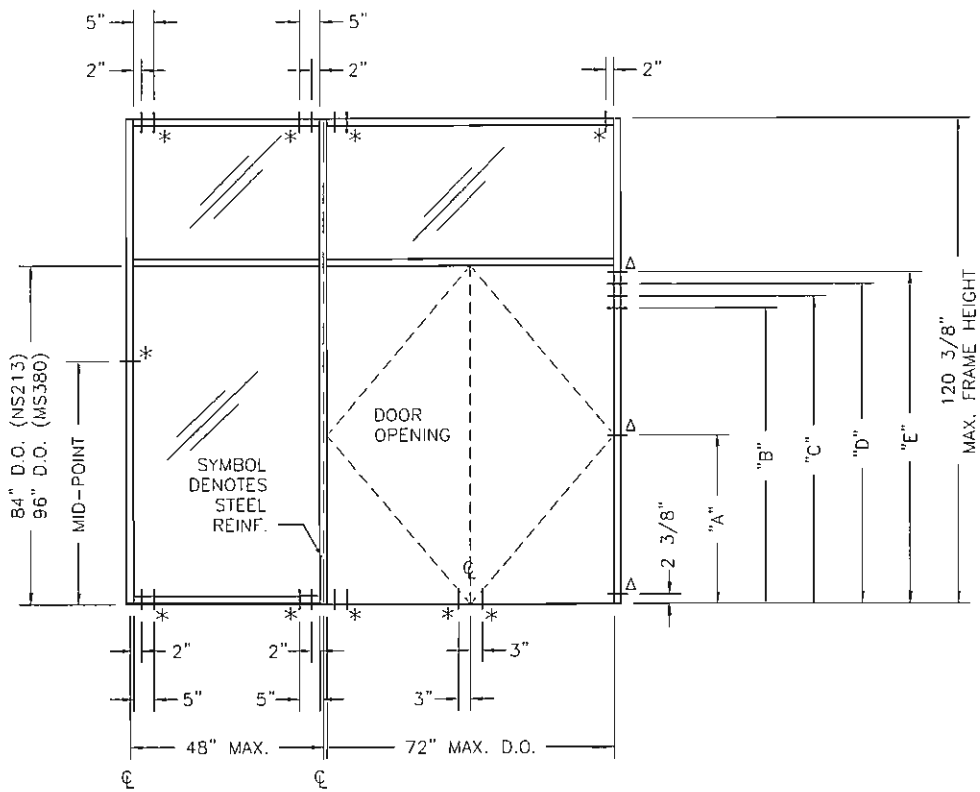
REV	BY	DATE	DESCRIPTION



FLORIDA PRODUCT
 APPROVAL DRAWINGS
 - FL300 FRAMING SYSTEM -
 BILL OF MATERIALS

DATE	12/29/2005	
DRAWN	CHECKED	APPROVED
SCC	JDW	JDW
PROJECT NO.	FLORIDA APPROVAL	
DRAWING NO.	FL300-FPA	
SHEET	13 OF 15	

S:\ASSEMBLIES & FABRICATION\A.PI\MOCK-UPS\FPA\FL300\14 CONCRETE.dwg, 12/29/2005 10:08:29 AM, phowel, \\ipp://192.168.9.25\CAP_Prt, Copyright: Coral Architectural



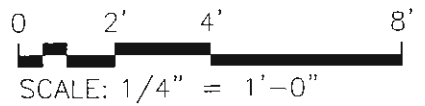
FASTENER LEGEND

△ 1/4" TAPCON
1 3/4" MIN. EMBEDMENT
WITH FILLER PLATE FULL
LENGTH OF MULLION.
3" MIN. SPACING.

* 1/4" TAPCON
1 3/4" MIN. EMBEDMENT.

STANDARD LENGTHS					
D.O. HEIGHT	"A"	"B"	"C"	"D"	"E"
84"	42 1/4"	73 3/8"	76 3/8"	79 3/8"	82 3/8"
96"	48 1/4"	85 3/8"	88 3/8"	91 3/8"	94 3/8"

**TYPICAL INSTALLATION INTO
CONCRETE SUBSTRATE.
MIN. 2500 P.S.I.**



BROADWAY ENGINEERING
1335 West Cass Street
Tampa, Florida 33606

Elizabeth H. Broadway
Elizabeth H. Broadway, P.E.
Professional Engineer
FL Registration No. 38558

1/10/06

**DRAWINGS FOR
FLORIDA
PRODUCT APPROVAL**

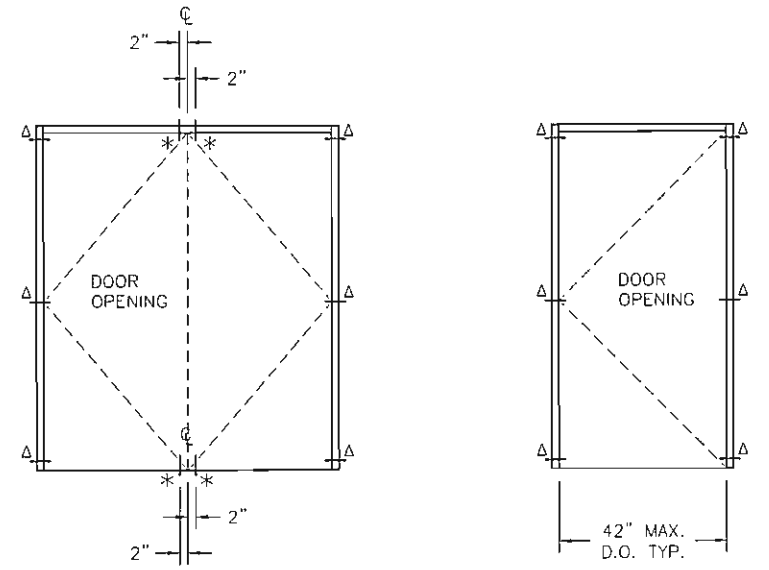
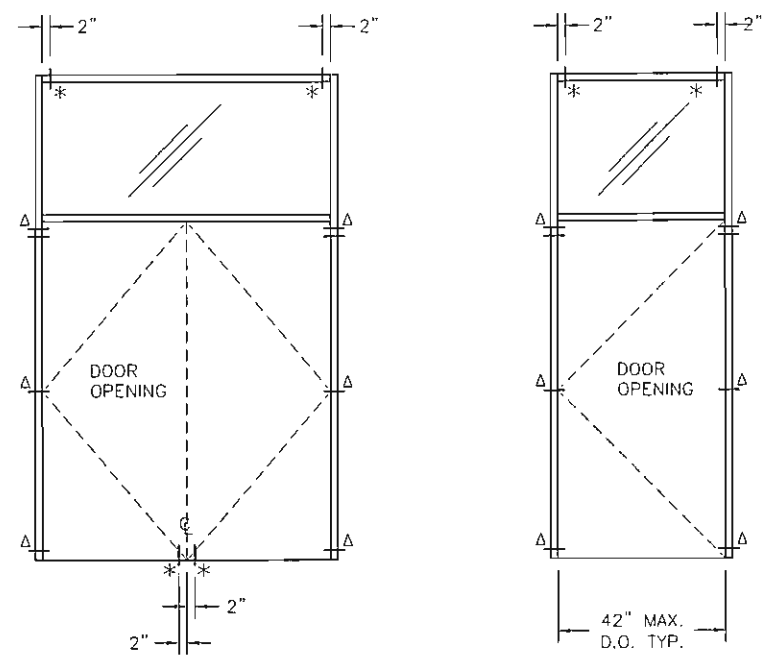
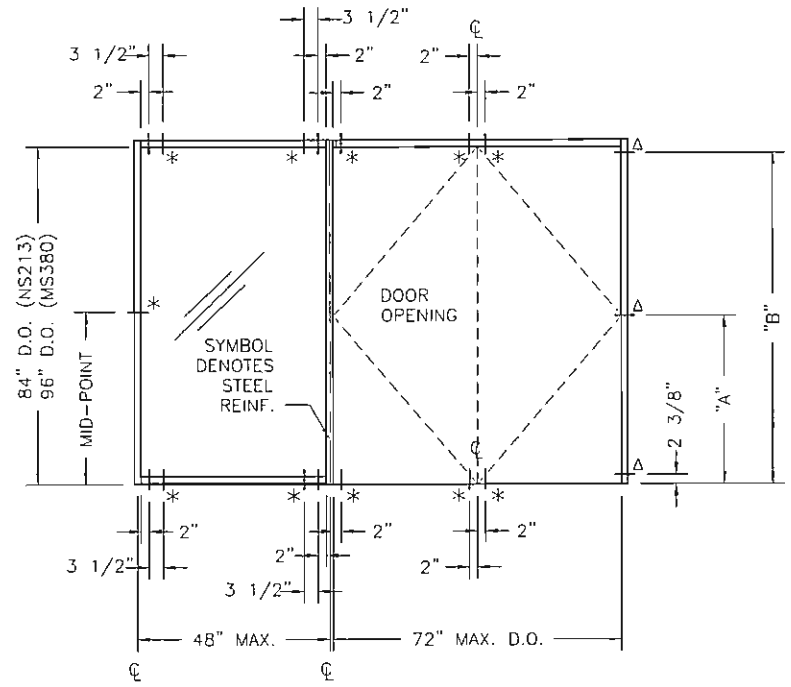
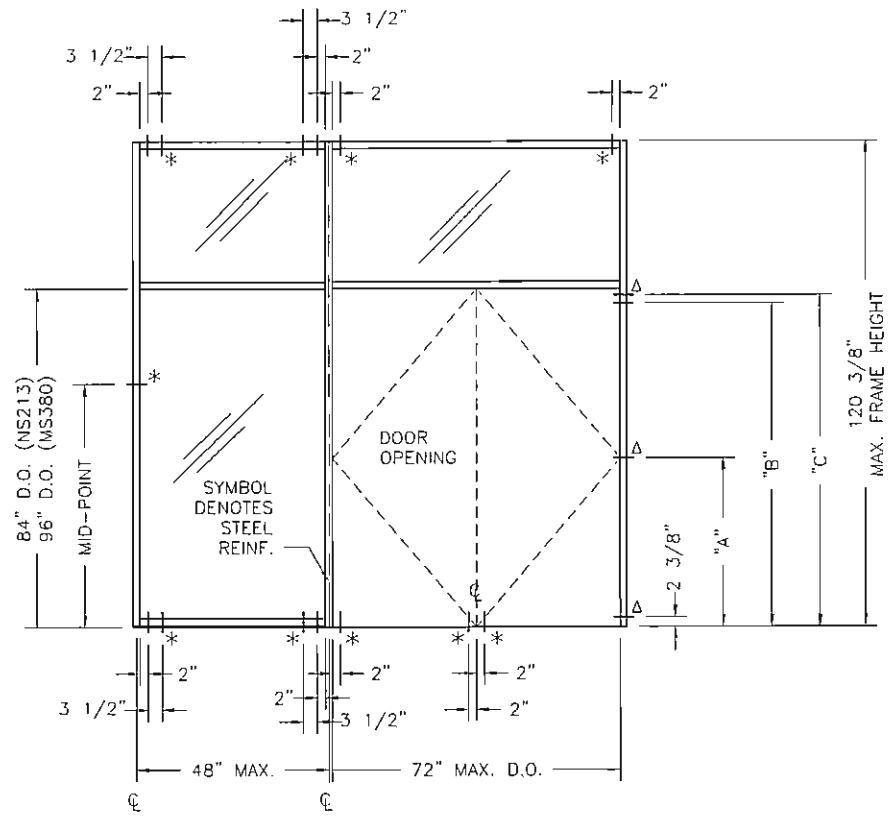
REV	BY	DATE	DESCRIPTION

Coral
Architectural Products
3010 RICE MINE ROAD, TUSCALOOSA, AL 35406
PHONE: 800-772-7737 FAX: 800-255-7320

**FLORIDA PRODUCT
APPROVAL DRAWINGS
- FL300 FRAMING SYSTEM -
PERIMETER FASTENER
LOCATIONS FOR ELEVATIONS
WITH DOORS**

DATE	12/29/2005	
DRAWN	CHECKED	APPROVED
SCC	JDW	JDW
PROJECT NO.	FLORIDA APPROVAL	
DRAWING NO.	FL300-FPA	
SHEET	14 OF 15	

S:\ASSEMBLIES & FABRICATION\A.P\MOCK-UPS\FPA\FL300115 STEEL.dwg, 12/29/2005 10:08:34 AM, phowel, \lpp://192.168.9.25\CAP_Prt, Copyright: Coral Architectural Prod



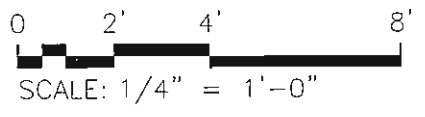
FASTENER LEGEND

Δ 1/4" TEK ANCHOR WITH FILLER PLATE FULL LENGTH OF MULLION. 1 1/2" MIN. SPACING.

* 1/4" TEK ANCHOR

STANDARD LENGTHS			
D.O. HEIGHT	"A"	"B"	"C"
84"	42 1/4"	80 3/8"	82 3/8"
96"	48 1/4"	92 3/8"	94 3/8"

TYPICAL INSTALLATION INTO STEEL SUBSTRATE.



BROADWAY ENGINEERING
 1335 West Cass Street
 Tampa, Florida 33606

Elizabeth Broadway
 Elizabeth A. Broadway, P.E.
 Professional Engineer
 FL Registration No. 38558

1/10/06

DRAWINGS FOR FLORIDA PRODUCT APPROVAL

FLORIDA PRODUCT APPROVAL DRAWINGS
 - FL300 FRAMING SYSTEM - PERIMETER FASTENER LOCATIONS FOR ELEVATIONS WITH DOORS

DATE 12/29/2005		
DRAWN SCC	CHECKED JDW	APPROVED JDW
PROJECT NO. FLORIDA APPROVAL		
DRAWING NO. FL300-FPA		
SHEET 15 OF 15		

Coral
 Architectural Products
 3010 RICE MINE ROAD, TUSCALOOSA, AL 35406
 PHONE: 800-772-7737 FAX: 800-255-7320

REV	BY	DATE	DESCRIPTION