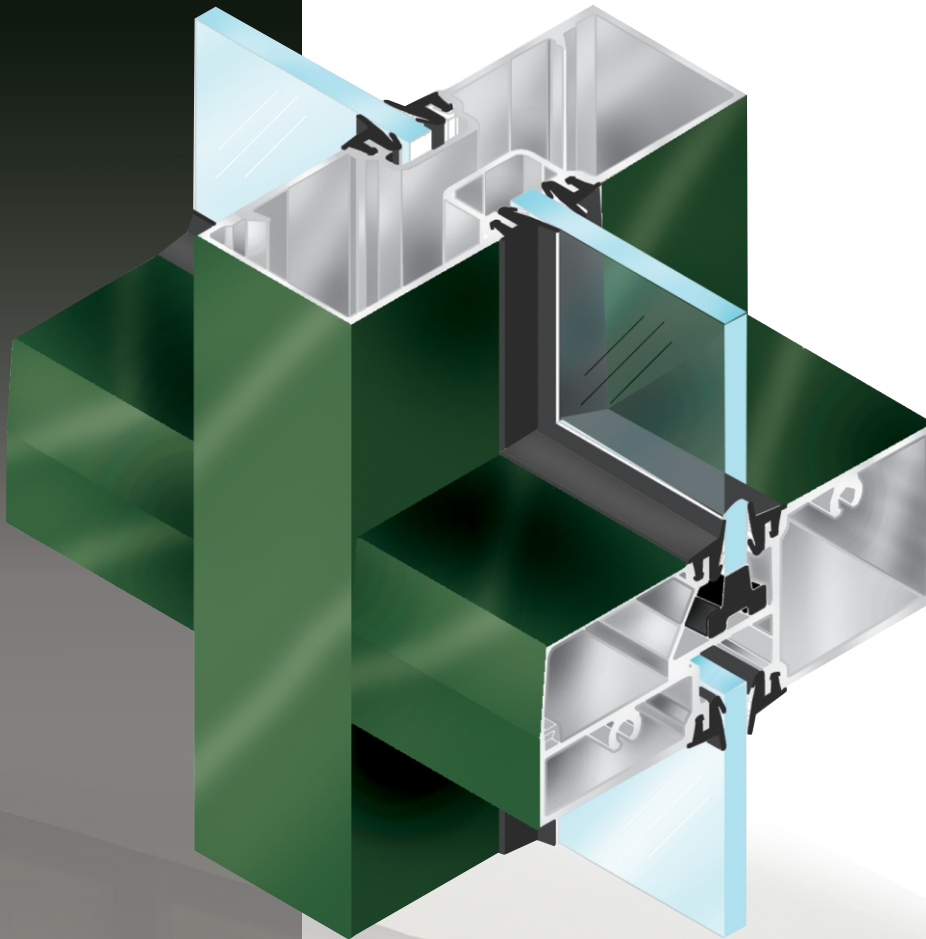


Storefront

GLAZING SYSTEM



Outside Glazed:

- Design Pressure = +60/-50 PSF
- Maximum DLO at design pressure 46-1/4" x 72"
- Water @ 15 PSF
- Spans up to 10'-0" with maximum mullion spacing at 48" on center
- Air Infiltration at 6.24 PSF < .06 CFM

Inside Glazed:

- Design Pressure = +40/-40 PSF
- Maximum DLO at design pressure 46-1/4" x 92-1/2"
- Water @ 15 PSF
- Spans up to 8'-0" with maximum mullion spacing at 48" on center
- Air Infiltration at 6.24 PSF < .06 CFM


FRONT LINE
ALUMINUM SYSTEMS

Coral
Architectural Products

FL200

STOREFRONT SYSTEM • 1/4" or 3/8"

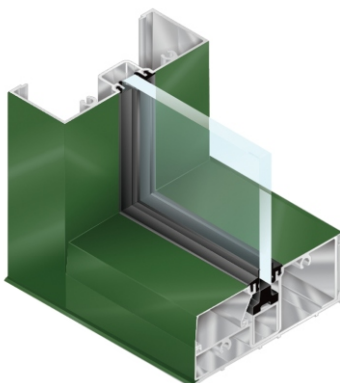


Storefront

GLAZING SYSTEM

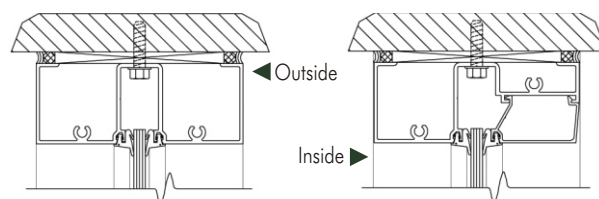
FL200

STOREFRONT SYSTEM • 1/4" or 3/8"

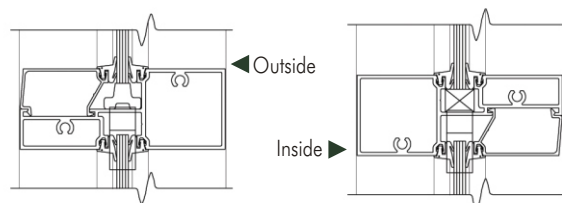


- 1-3/4" x 4 1/2" for 1/4" or 3/8" glazing infill
- Screw-spline joinery using #14 x 1" spline screws
- Hydraulic CoraPunch or drill jig fabrication options
- Deep pocket perimeter sections:
 - Allows for direct anchor attachment to substrate
 - Eliminates drilling access holes and blind caulk seals
 - Eliminates flat filler plate at head and wall jambs
 - Allows for 1/4" diameter hex head anchor bolts to substrate
- Light, standard and heavy wall mullion options
- Fully tested for outside and inside glazing
- Full height subsill flashing with "C" slot for holding sealant

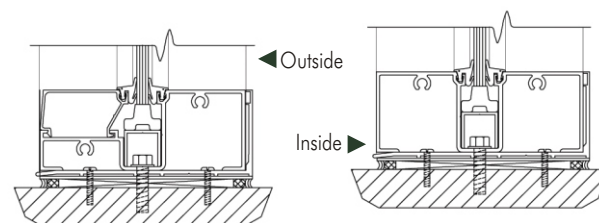
HEAD



HORIZONTAL



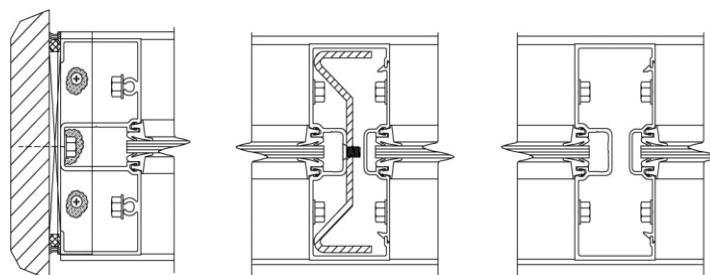
SILL



JAMB

VERTICAL STEEL REINFORCEMENT

VERTICAL



FRONT LINE
ALUMINUM SYSTEMS

Coral

■ Architectural Products ■

3010 Rice Mine Road ■ Tuscaloosa, AL 35406
1.800.772.7737 ■ Fax 1.800.443.6261 ■ www.coralind.com