

FLORIDA PRODUCT APPROVAL DRAWINGS - FL200 FRAMING SYSTEM -

REV	BY	DATE	DESCRIPTION

Coral
Architectural Products
3010 RICE MINE ROAD, TUSCALOOSA, AL 35408
PHONE: 800-772-7737 FAX: 800-255-7320

INDEX TO DRAWINGS

1	INDEX TO DRAWING AND NOTES
2	TYPICAL ELEVATION HEAVY ALUMINUM MULLION
3	TYPICAL ELEVATION STANDARD ALUMINUM MULLION WITH STEEL -LONG SPAN
4	TYPICAL ELEVATION STANDARD ALUMINUM MULLION (INTERIOR GLAZE) -SHORT SPAN
5	TYPICAL ELEVATION LIGHT ALUMINUM MULLION -SHORT SPAN
6	TYPICAL ELEVATIONS WITH DOORS -LONG SPAN
7	STANDARD FRAMING DETAILS
8	INTERIOR GLAZE FRAMING DETAILS
9	DOOR FRAMING DETAILS
10	DOOR FRAMING DETAILS
11	DOOR FRAMING DETAILS
12	GLASS SCHEDULE
13	BILL OF MATERIALS
14	PERIMETER FASTENER LOCATIONS FOR ELEVATIONS WITH DOORS-CONCRETE
15	PERIMETER FASTENER LOCATIONS FOR ELEVATIONS WITH DOORS-STEEL

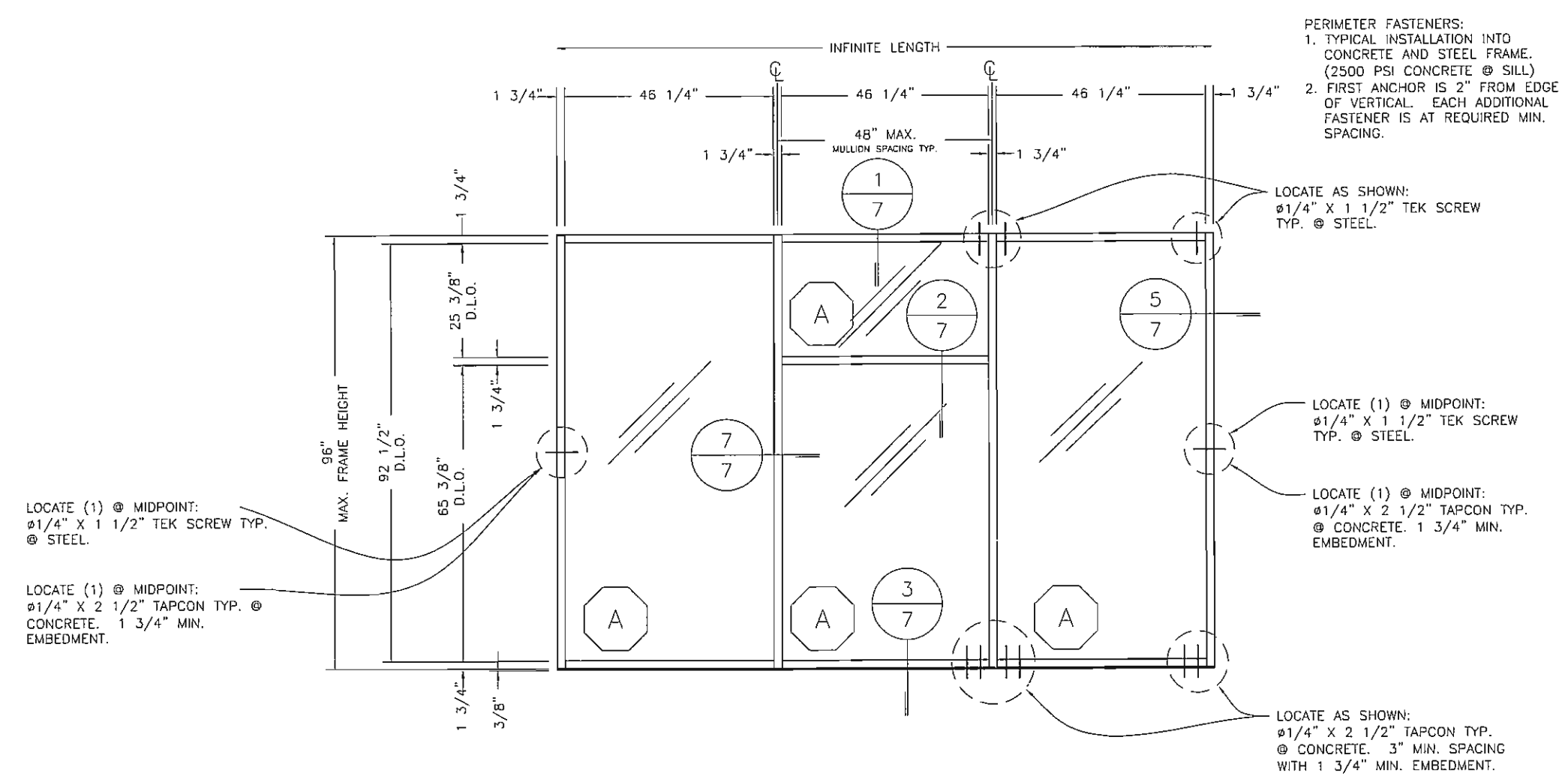
BROADWAY ENGINEERING
1335 West Cass Street
Tampa, Florida 33606

Elizabeth Broadway
Elizabeth A. Broadway, P.E.
Professional Engineer
FL Registration No. 38558
1/10/06

FLORIDA PRODUCT
APPROVAL DRAWINGS
- FL200 FRAMING SYSTEM -
INDEX TO DRAWING AND NOTES

DATE	12/29/2005	
DRAWN	CHECKED	APPROVED
SCC	JDW	JDW
PROJECT NO.	FLORIDA APPROVAL	
DRAWING NO.	FL200-FPA	
SHEET	1 OF 15	

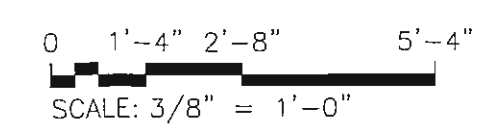
DRAWINGS FOR
FLORIDA
PRODUCT APPROVAL



TYPICAL ELEVATION HEAVY ALUMINUM MULLION

- NOTES:
1. HORIZONTAL MULLION (DETAIL 2/7) IS OPTIONAL AT ANY LOCATION IN ANY BAY
 2. D.L.O. = DAYLIGHT OPENING
 3. SEE NS213, MS380 & WS500 DOOR PRODUCT APPROVALS
 4. GLASS SIZE = D.L.O. + 5/8"

- TEST PARAMETERS:
1. DESIGN PRESSURE = +/-60 PSF
 2. AIR TEST AT 6.24 PSF
 3. WATER TEST AT 15 PSF
 4. MAXIMUM DEFLECTION = L/175 OR .549"



BROADWAY ENGINEERING
1335 West Cass Street
Tampa, Florida 33606

Elizabeth Broadway
Elizabeth A. Broadway, P.E.
Professional Engineer
FL Registration No. 38558
1/10/06

DRAWINGS FOR
FLORIDA
PRODUCT APPROVAL

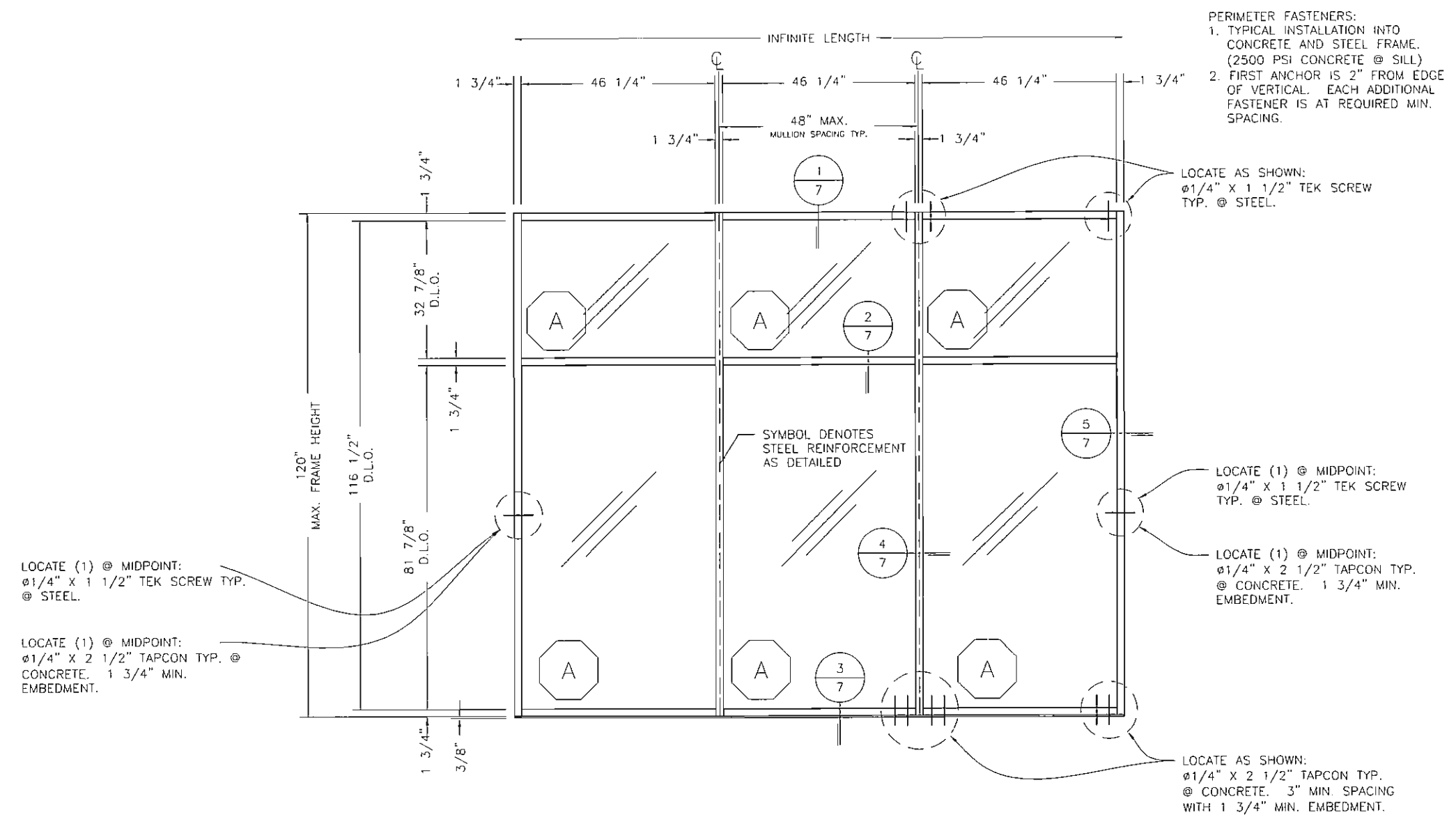
FLORIDA PRODUCT
APPROVAL DRAWINGS
- FL200 FRAMING SYSTEM -
FRAMING ELEVATIONS

DATE	12/29/2005	
DRAWN	CHECKED	APPROVED
SCC	JDW	JDW
PROJECT NO.	FLORIDA APPROVAL	
DRAWING NO.	FL200-FPA	
SHEET	2 OF 15	

Coral
Architectural Products
3010 RICE MINE ROAD, TUSCALOOSA, AL 35408
PHONE: 800-772-7737 FAX: 800-255-7320

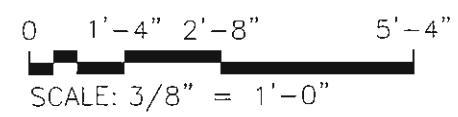
REV	BY	DATE	DESCRIPTION

S:\ASSEMBLIES & FABRICATION\C.A.PIMOCK-UPS\FPA\FL200\3 TYPICAL ELEVATION STANDARD ALUMINUM MULLION WITH STEEL.dwg, 12/29/2005 8:26:23 AM, phowel, 1



**TYPICAL ELEVATION
STANDARD ALUMINUM
MULLION WITH STEEL
-LONG SPAN-**

- NOTES:
1. HORIZONTAL MULLION (DETAIL 2/7) IS OPTIONAL AT ANY LOCATION IN ANY BAY
 2. D.L.O. = DAYLIGHT OPENING
 3. SEE NS213, MS380 & WS500 DOOR PRODUCT APPROVALS
 4. GLASS SIZE = D.L.O. + 5/8"
- TEST PARAMETERS:
1. DESIGN PRESSURE = +60/-50 PSF
 2. MAXIMUM DEFLECTION = .686"



BROADWAY ENGINEERING
1335 West Cass Street
Tampa, Florida 33606

Elizabeth A. Broadway
Elizabeth A. Broadway, P.E.
Professional Engineer
FL Registration No. 38558

1/10/06

DRAWINGS FOR
FLORIDA
PRODUCT APPROVAL

FLORIDA PRODUCT
APPROVAL DRAWINGS
- FL200 FRAMING SYSTEM -
FRAMING ELEVATIONS

DATE	12/29/2005	
DRAWN	CHECKED	APPROVED
SCC	JDW	JDW
PROJECT NO.	FLORIDA APPROVAL	
DRAWING NO.	FL200-FPA	
SHEET	3 OF 15	

Coral
Architectural Products
3010 RICE MINE ROAD, TUSCALOOSA, AL 35406
PHONE: 800-772-7737 FAX: 800-255-1320

REV	BY	DATE	DESCRIPTION

- PERIMETER FASTENERS:
1. TYPICAL INSTALLATION INTO CONCRETE AND STEEL FRAME. (2500 PSI CONCRETE @ SILL)
 2. FIRST ANCHOR IS 2" FROM EDGE OF VERTICAL. EACH ADDITIONAL FASTENER IS AT REQUIRED MIN. SPACING.

LOCATE AS SHOWN:
Ø1/4" X 1 1/2" TEK SCREW
TYP. @ STEEL.

LOCATE (1) @ MIDPOINT:
Ø1/4" X 1 1/2" TEK SCREW
TYP. @ STEEL.

LOCATE (1) @ MIDPOINT:
Ø1/4" X 2 1/2" TAPCON TYP.
@ CONCRETE. 1 3/4" MIN.
EMBEDMENT.

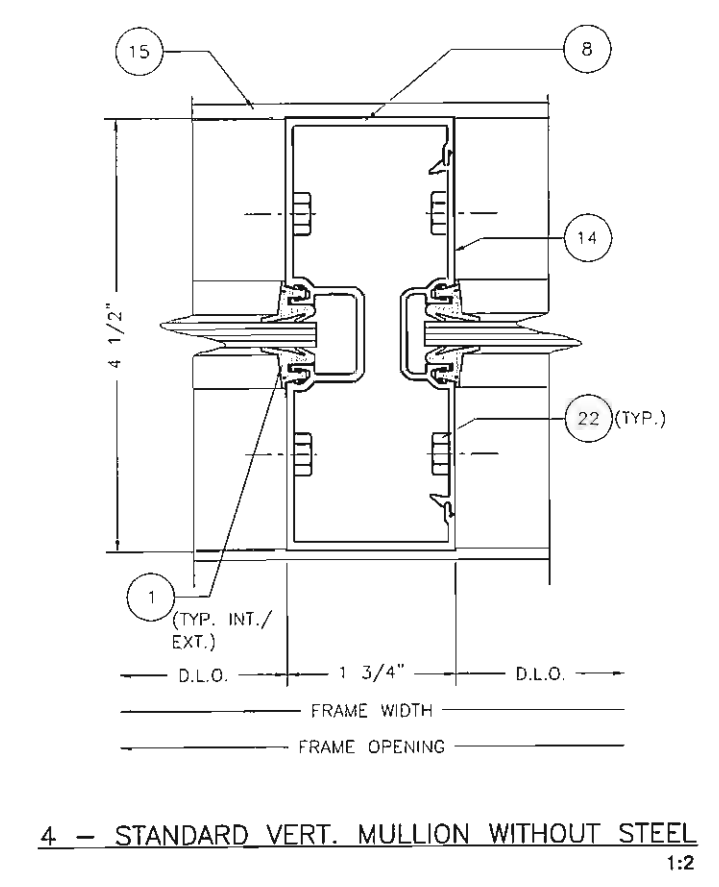
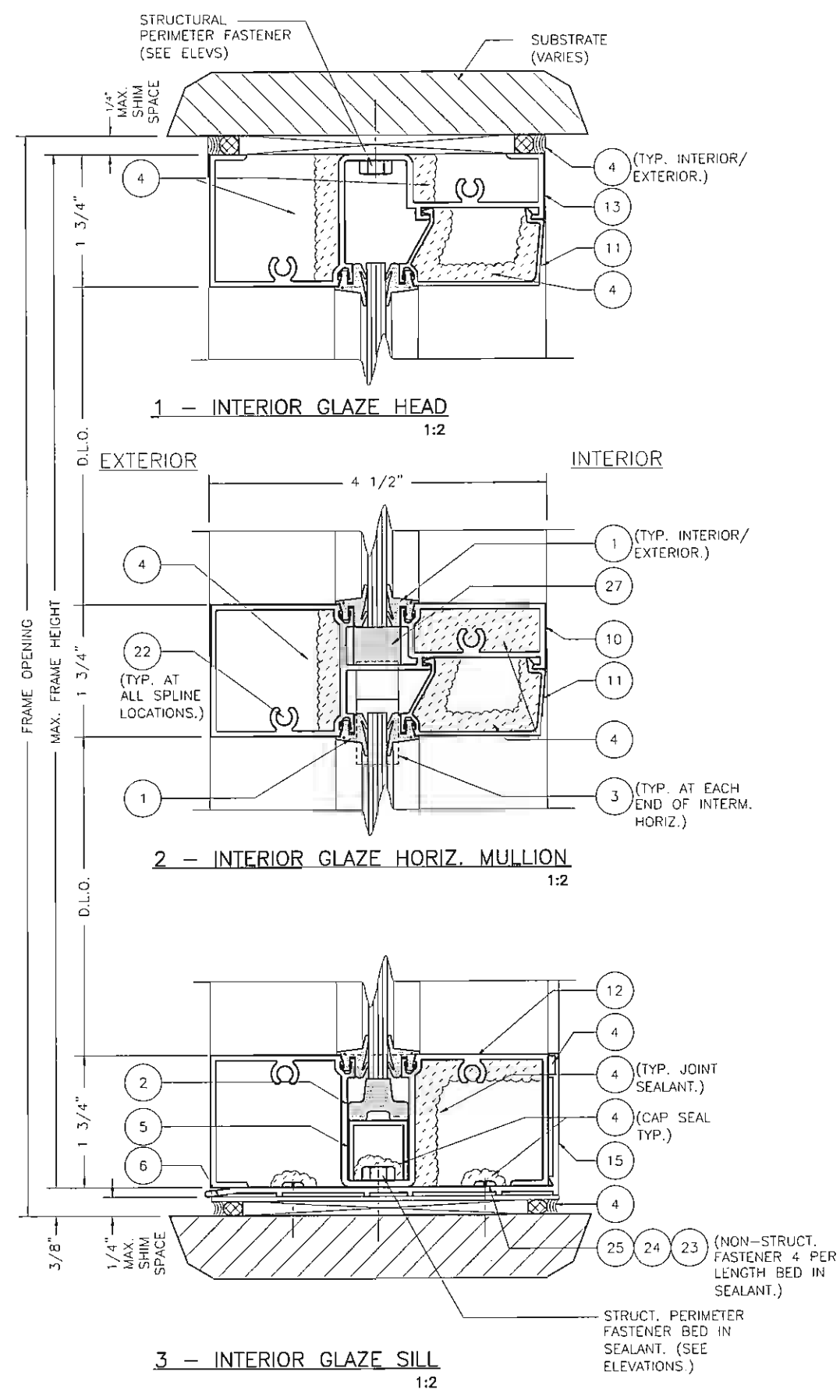
LOCATE AS SHOWN:
Ø1/4" X 2 1/2" TAPCON TYP.
@ CONCRETE. 3" MIN. SPACING
WITH 1 3/4" MIN. EMBEDMENT.

LOCATE (1) @ MIDPOINT:
Ø1/4" X 1 1/2" TEK SCREW TYP.
@ STEEL.

LOCATE (1) @ MIDPOINT:
Ø1/4" X 2 1/2" TAPCON TYP. @
CONCRETE. 1 3/4" MIN.
EMBEDMENT.

SYMBOL DENOTES
STEEL REINFORCEMENT
AS DETAILED

S:\ASSEMBLIES & FABRICATION\C.A.PIMOCK-UPS\FPA\FL200\8 INTERIOR GLAZE FRAMING DETAILS.dwg, 12/29/2005 8:28:23 AM, phowel, \lpp:/192.168.9.25\CAP_Prt, Copy



BROADWAY ENGINEERING
 1335 West Cass Street
 Tampa, Florida 33606

Elizabeth Broadway
 Elizabeth A. Broadway, P.E.
 Professional Engineer
 FL Registration No. 35458

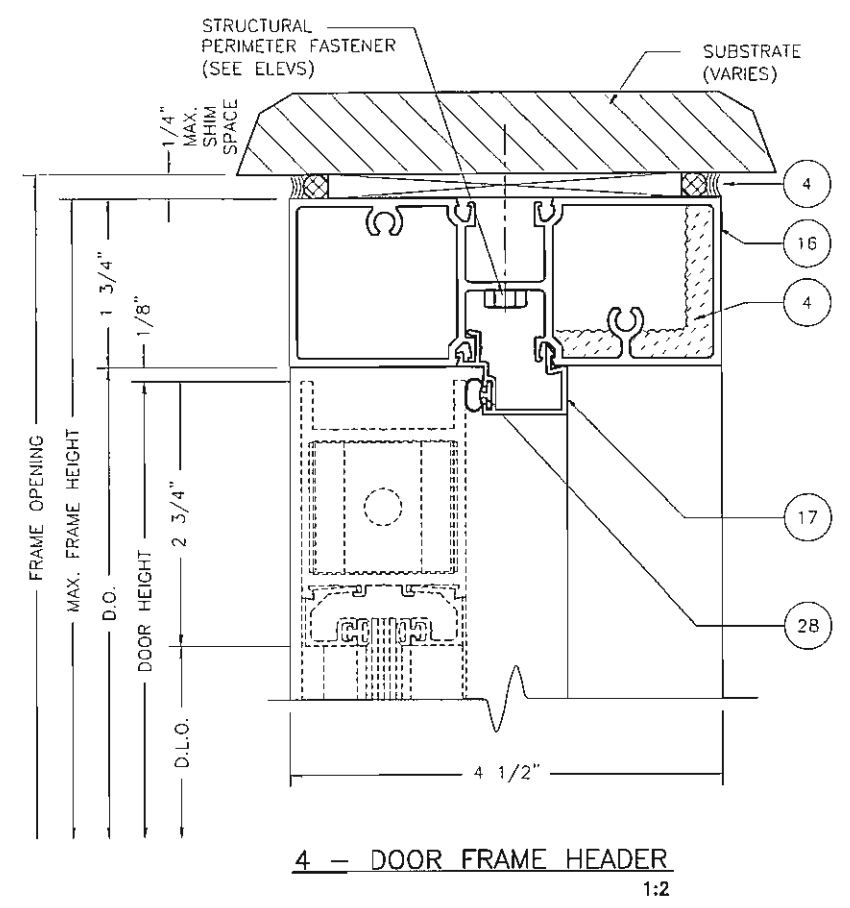
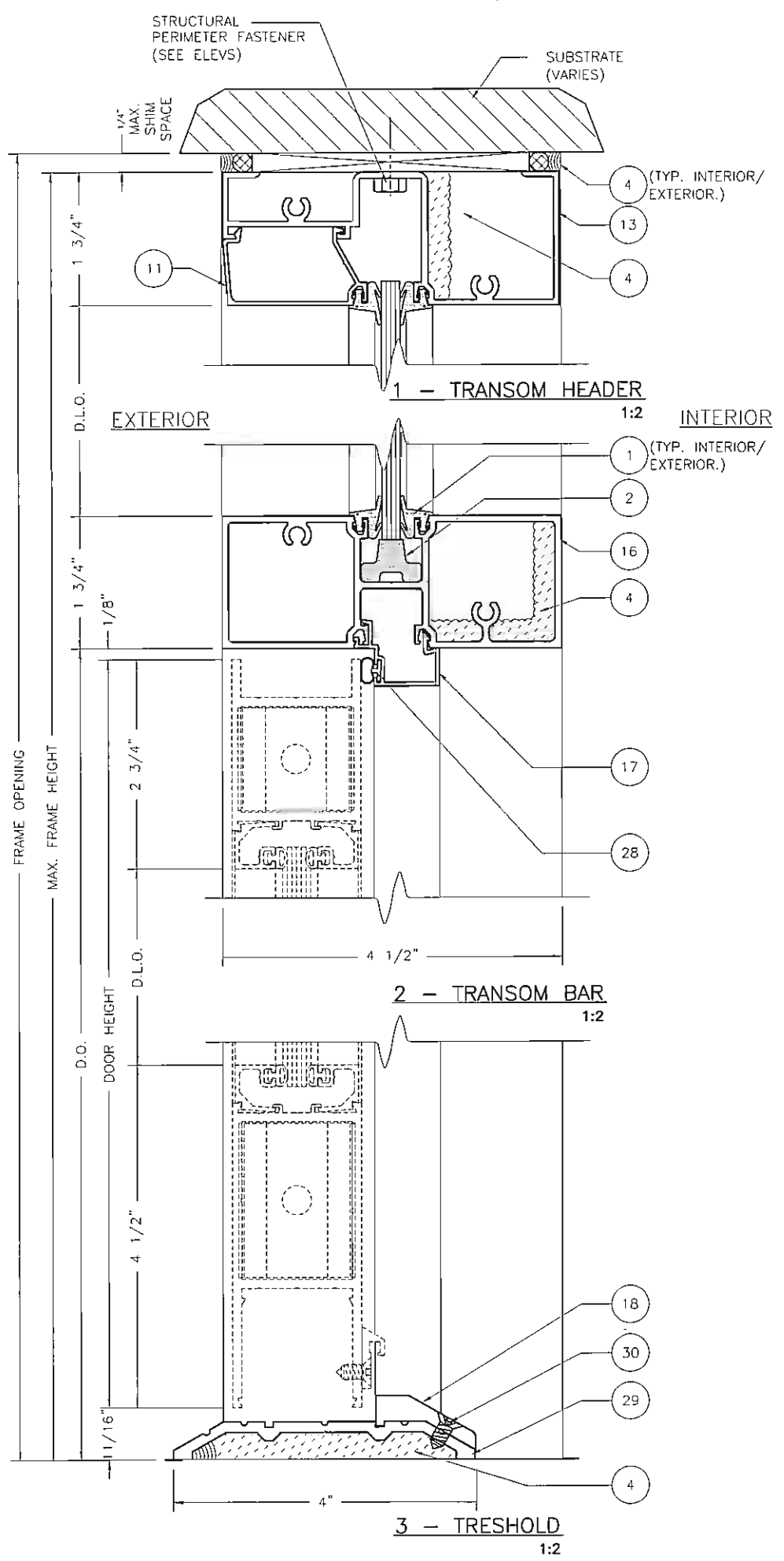
1/10/06

DRAWINGS FOR
 FLORIDA
 PRODUCT APPROVAL

<p>FLORIDA PRODUCT APPROVAL DRAWINGS - FL200 FRAMING SYSTEM - FRAMING DETAILS</p>		<p>DATE 12/29/2005</p>	
		<p>DRAWN SCC</p>	<p>CHECKED JDW</p>
<p>PROJECT NO. FLORIDA APPROVAL</p>		<p>DRAWING NO. FL200-FPA</p>	
<p>SHEET 8 OF 15</p>		<p>DESCRIPTION</p>	

Coral
 Architectural Products
 3010 RICE MINE ROAD, TUSCALOOSA, AL 35408
 PHONE: 800-772-7737 FAX: 800-255-7320

S:\ASSEMBLIES & FABRICATION\C.A.PIMOCK-UPS\FPA\FL200\9 DOOR FRAMING DETAILS.dwg, 12/29/2005 8:28:38 AM, phowel, \lpp:/192.168.9.25\CAP_Prt, Copyright: Coral



BROADWAY ENGINEERING
 1335 West Cass Street
 Tampa, Florida 33606

Elizabeth A. Broadway
 Elizabeth A. Broadway, P.E.
 Professional Engineer
 FL Registration No. 38558

1/10/06

DRAWINGS FOR
 FLORIDA
 PRODUCT APPROVAL

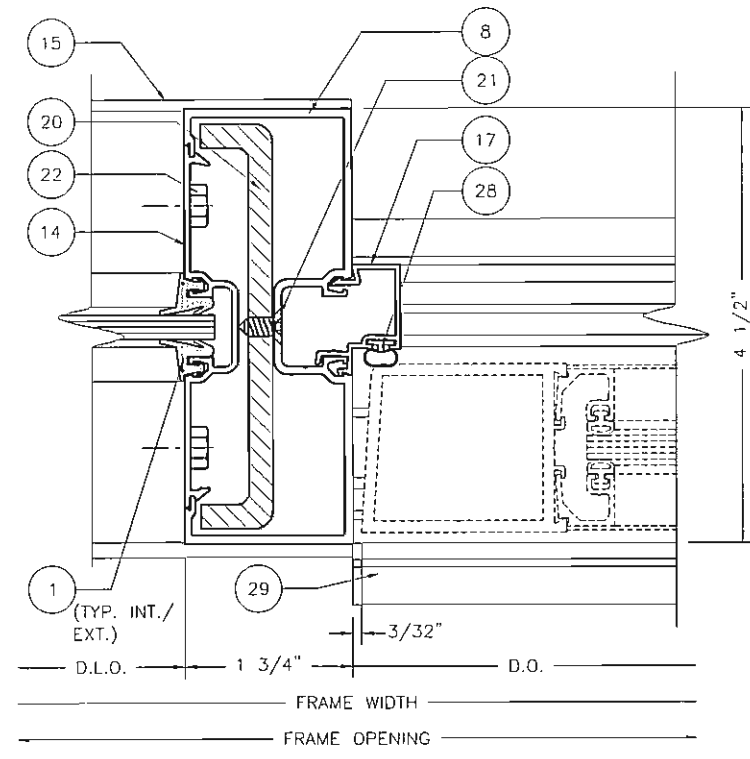
FLORIDA PRODUCT
 APPROVAL DRAWINGS
 - FL200 FRAMING SYSTEM -
 FRAMING DETAILS

DATE	12/29/2005	
DRAWN	CHECKED	APPROVED
SCC	JDW	JDW
PROJECT NO.	FLORIDA APPROVAL	
DRAWING NO.	FL200-FPA	
SHEET	9 OF 15	

REV	BY	DATE	DESCRIPTION

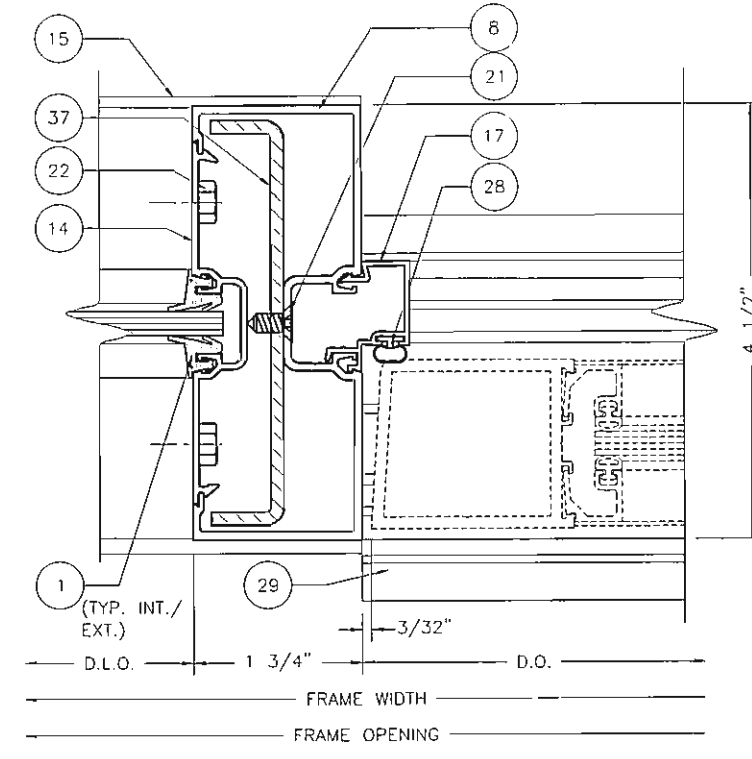
Coral
 Architectural Products
 3010 RICE MINE ROAD, TUSCALOOSA, AL 35408
 PHONE: 800-772-7737 FAX: 800-255-7320

S:\ASSEMBLIES & FABRICATION\C.A.PIMOCK-UPS\FPA\FL200\10 DOOR FRAMING DETAILS.dwg, 12/29/2005 8:28:53 AM, phowel, \\pwp://192.168.9.25\CAP_Prt, Copyright: Cora



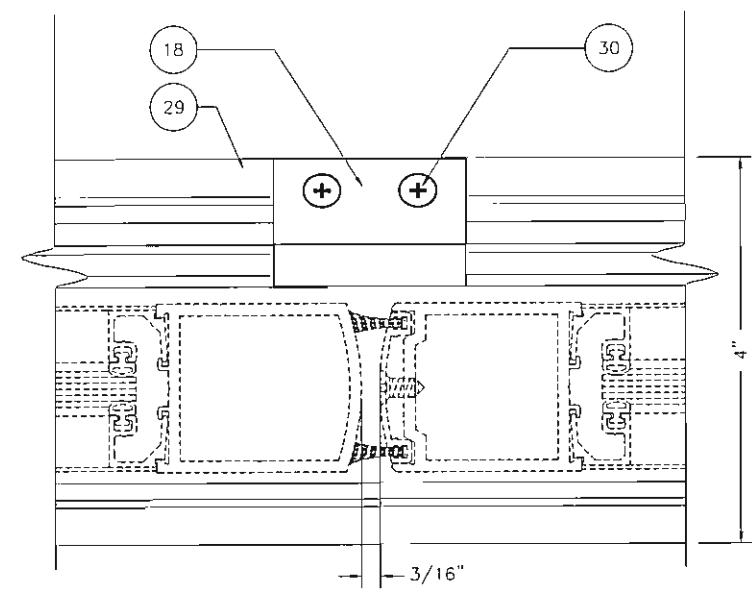
1 - INTERM. DOOR JAMB
1:2

NOTE: SEE CHART 1

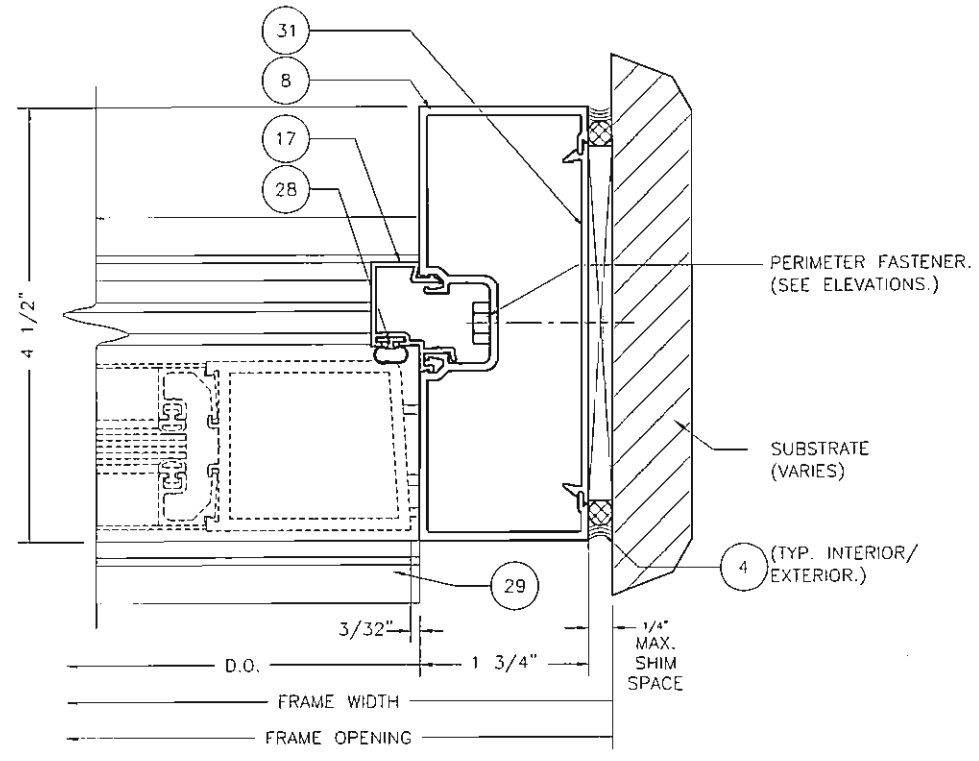


1A - INTERM. DOOR JAMB
1:2

NOTE: SEE CHART 1



2 - MEETING STILES
1:2



3 - DOOR JAMB AT WALL
1:2

CHART 1

INTERM. DOOR JAMB LIMITATIONS		
DESIGN PRESSURE	DOOR WIDTH	WITH STEEL
0 - 25 PSF	42"	- 0 -
26 - 60 PSF	42"	SR102
0 - 20 PSF	72"	- 0 -
21 - 46 PSF	72"	SR102
47 - 60 PSF	72"	SR105

BROADWAY ENGINEERING
1335 West Cass Street
Tampa, Florida 33606

Elizabeth Broadway
Elizabeth A. Broadway, PE
Professional Engineer
FL Registration No. 36558
1/10/06

DRAWINGS FOR
FLORIDA
PRODUCT APPROVAL

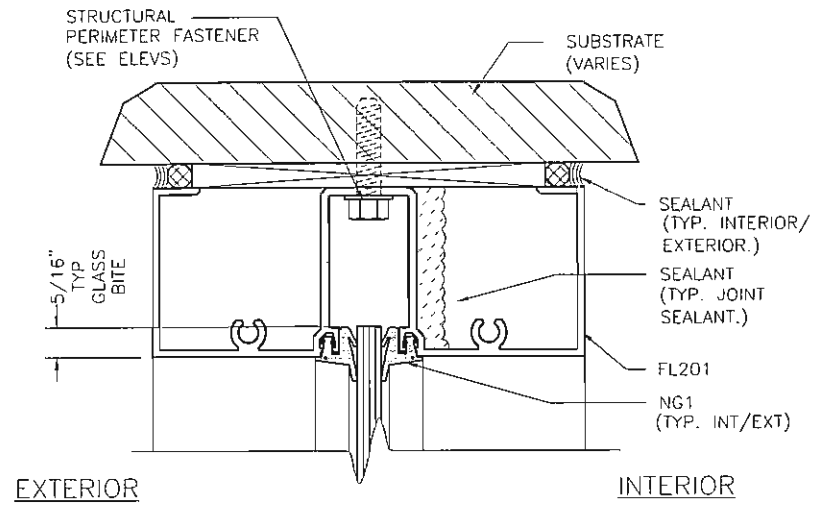
FLORIDA PRODUCT
APPROVAL DRAWINGS
- FL200 FRAMING SYSTEM -
FRAMING DETAILS

DATE	12/29/2005	
DRAWN	CHECKED	APPROVED
SCC	JDW	JDW
PROJECT NO.	FLORIDA APPROVAL	
DRAWING NO.	FL200-FPA	
SHEET	10 OF 15	

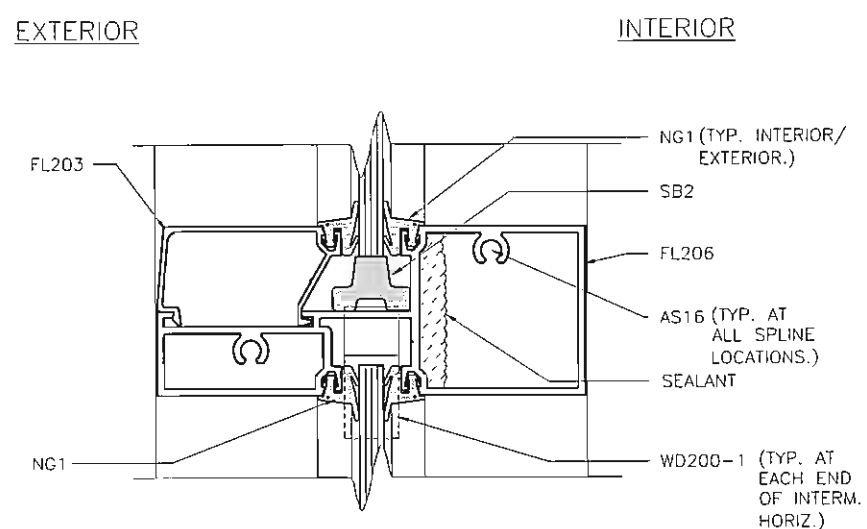
Coral
Architectural Products
3010 RICE MINE ROAD, TUSCALOOSA, AL 35408
PHONE: 800-772-7737 FAX: 800-255-7320

REV	BY	DATE	DESCRIPTION

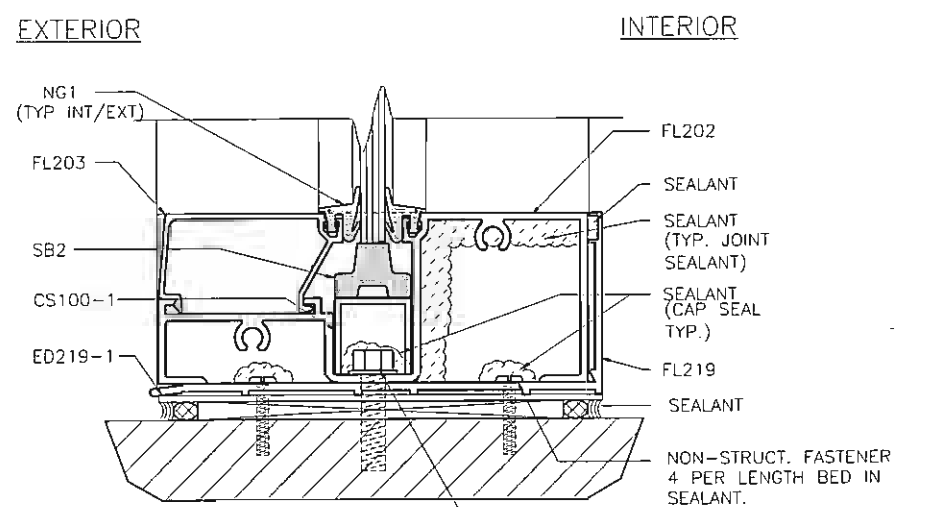
S:\ASSEMBLIES & FABRICATION\C.A.PIMOCK-UPS\FPA\FL200\12 GLASS SCHEDULE.dwg, 12/29/2005 8:29:13 AM, phowel, Wipp:/192.168.9.25\CAP_Prt, Copyright: Coral Archit



1 - STANDARD HEAD
1:2



2 - STANDARD HORIZ. MULLION
1:2



3 - STANDARD SILL
1:2

GLASS SCHEDULE				
GLASS MARK SYMBOL	GLASS TYPE	MANUFACTURER	MAXIMUM DLO SIZE	MAXIMUM SQUARE FEET
A	1/4" TEMPERED GLASS	VARIES	46.25 X 92.5	29.7

OPTIONS AND LIMITATIONS					
DESIGN PRESSURE PSF	INTERM VERTICAL MULLION	WALL JAMB MULLION	MAX MULLION LENGTH	MAX SPAN CL TO CL	QUALIFIED GLASS TYPE
+60/-60	FL216 W/O STEEL	FL201	96"	48"	A
+60/-50	FL209 W/ SR101	FL201	120"	48"	A
+60/-60	FL204 W/O STEEL	FL201	72"	48"	A
+40/-40	FL209 W/O STEEL	FL201	96"	48"	A

BROADWAY ENGINEERING
1335 West Cass Street
Tampa, Florida 33606

Elizabeth H. Broadway
Elizabeth H. Broadway, PE
Professional Engineer
FL Registration No. 38558
1/10/06

DRAWINGS FOR
FLORIDA
PRODUCT APPROVAL

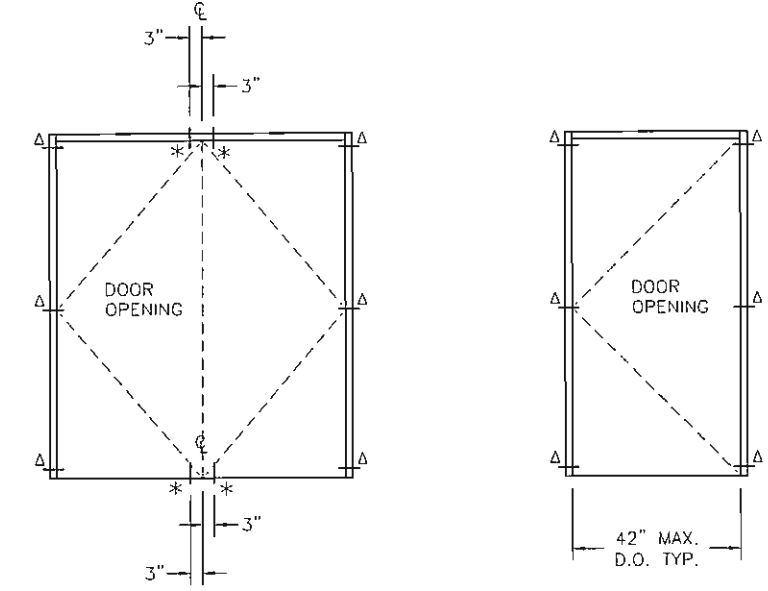
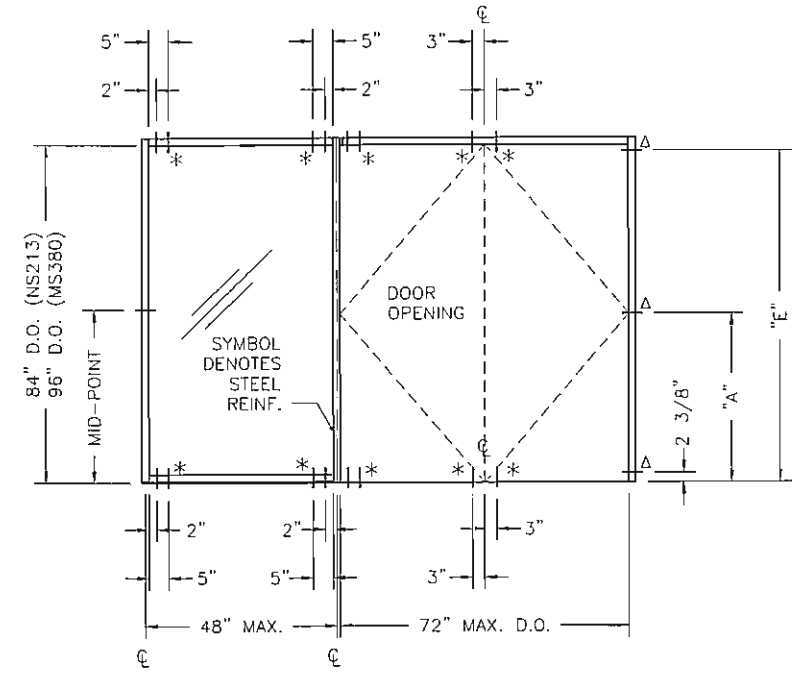
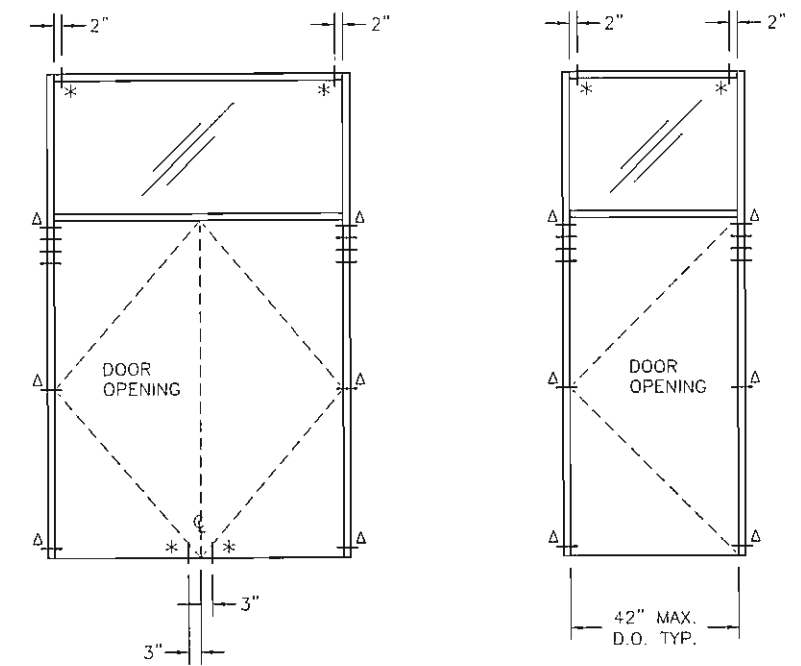
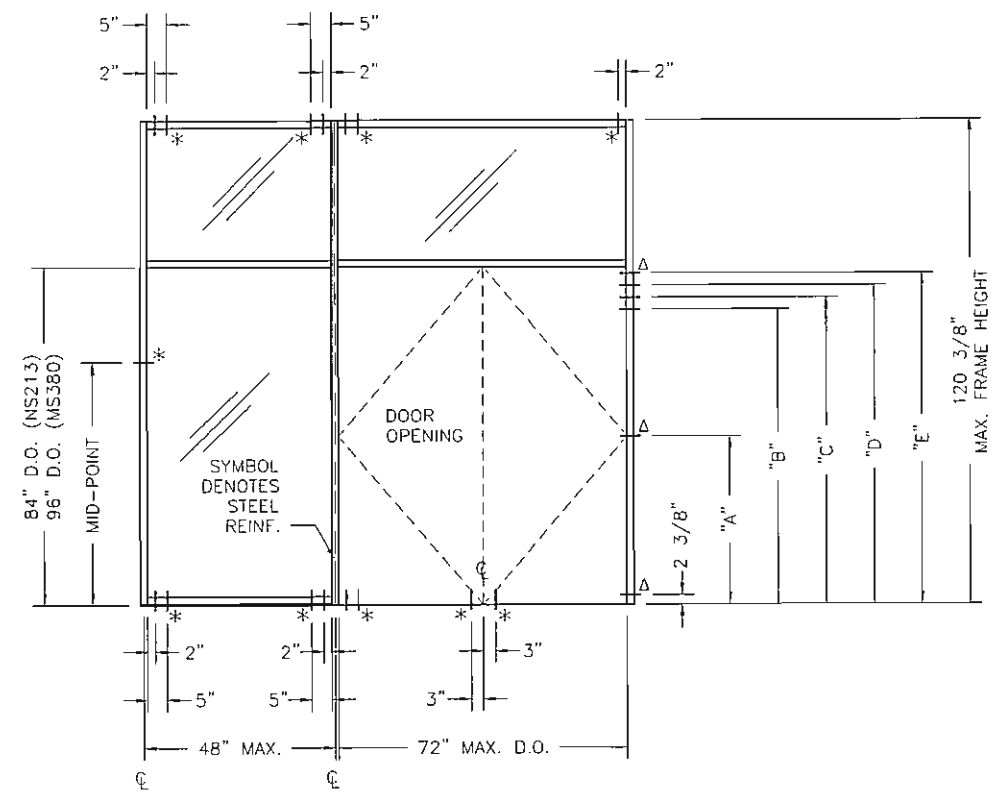
REV	BY	DATE	DESCRIPTION

Coral
Architectural Products
3010 RICE MINE ROAD, TUSCALOOSA, AL 35406
PHONE: 800-772-7737 FAX: 800-255-7320

FLORIDA PRODUCT
APPROVAL DRAWINGS
- FL200 FRAMING SYSTEM -
GLASS SCHEDULE

DATE	12/29/2005	
DRAWN	CHECKED	APPROVED
SCC	JDW	JDW
PROJECT NO.	FLORIDA APPROVAL	
DRAWING NO.	FL200-FPA	
SHEET	12 OF 15	

S:\ASSEMBLIES & FABRICATION\C.A.P\MOCK-UPS\FPA\FL200\14 - CONCRETE.dwg, 12/29/2005 8:29:34 AM, phowel, \\ppl:\192.168.9.25\CAP_Prt, Copyright: Coral Architectural



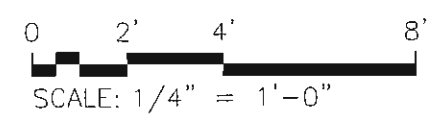
FASTENER LEGEND

Δ 1/4" TAPCON
1 3/4" MIN. EMBEDMENT
WITH FILLER PLATE FULL
LENGTH OF MULLION.
3" MIN. SPACING.

* 1/4" TAPCON
1 3/4" MIN. EMBEDMENT.

STANDARD LENGTHS					
D.O. HEIGHT	"A"	"B"	"C"	"D"	"E"
84"	42 1/4"	73 3/8"	76 3/8"	79 3/8"	82 3/8"
96"	48 1/4"	85 3/8"	88 3/8"	91 3/8"	94 3/8"

**TYPICAL INSTALLATION INTO
CONCRETE SUBSTRATE.
MIN. 2500 P.S.I.**



BROADWAY ENGINEERING
1335 West Cass Street
Tampa, Florida 33606

Elizabeth Broadway
Elizabeth A. Broadway, P.E.
Professional Engineer
FL Registration No. 38558
1/10/06

**DRAWINGS FOR
FLORIDA
PRODUCT APPROVAL**

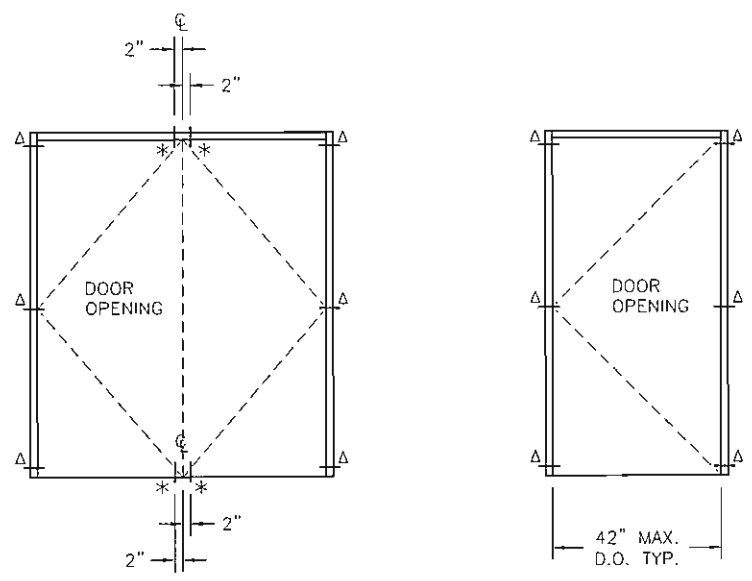
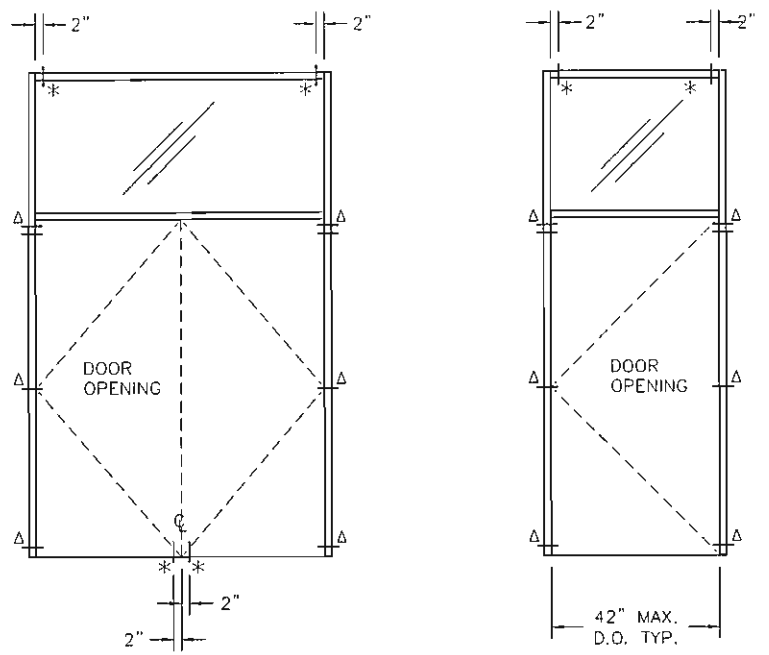
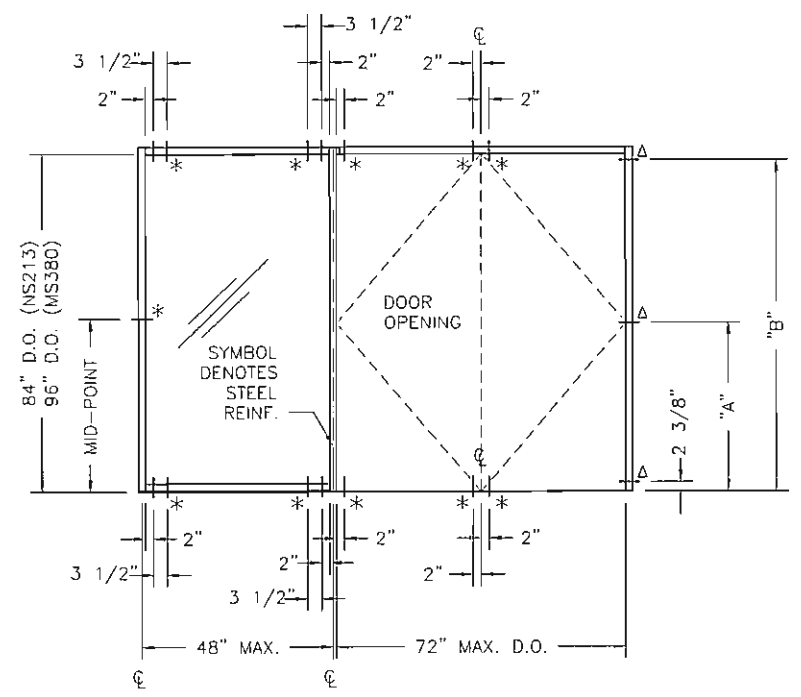
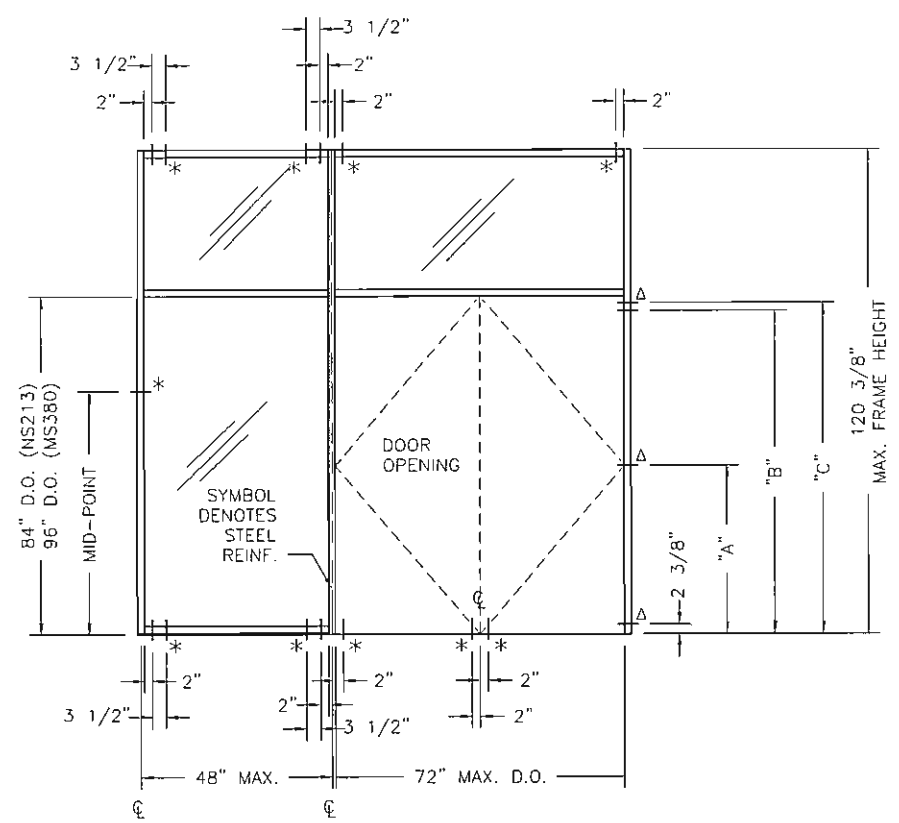
REV	BY	DATE	DESCRIPTION

Coral
Architectural Products
3010 RICE MINE ROAD, TUSCALOOSA, AL 35406
PHONE: 800-772-7737 FAX: 800-255-0320

**FLORIDA PRODUCT
APPROVAL DRAWINGS
- FL200 FRAMING SYSTEM -
PERIMETER FASTENER LOCATIONS FOR
ELEVATIONS WITH DOORS**

DATE	12/29/2005	
DRAWN	CHECKED	APPROVED
SCC	JDW	JDW
PROJECT NO.	FLORIDA APPROVAL	
DRAWING NO.	FL200-FPA	
SHEET	14 OF 15	

S:\ASSEMBLIES & FABRICATION\C.A.PIMOCK-UPS\FPFL20015 STEEL.dwg, 12/29/2005 8:29:39 AM, phowel, \lpp://192.168.9.25\CAP_Prt, Copyright: Coral Architectural Products

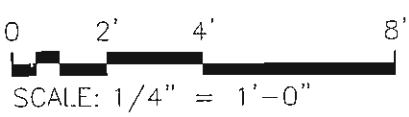


FASTENER LEGEND

- Δ 1/4" TEK ANCHOR WITH FILLER PLATE FULL LENGTH OF MULLION. 1 1/2" MIN. SPACING.
- * 1/4" TEK ANCHOR

STANDARD LENGTHS			
D.O. HEIGHT	"A"	"B"	"C"
84"	42 1/4"	80 3/8"	82 3/8"
96"	48 1/4"	92 3/8"	94 3/8"

TYPICAL INSTALLATION INTO STEEL SUBSTRATE.



BROADWAY ENGINEERING
 1335 West Cass Street
 Tampa, Florida 33606

Elizabeth Broadway
 Elizabeth A. Broadway, P.E.
 Professional Engineer
 FL Registration No. 38558
 1/10/06

DRAWINGS FOR
 FLORIDA
 PRODUCT APPROVAL

FLORIDA PRODUCT
 APPROVAL DRAWINGS
 - FL200 FRAMING SYSTEM -
 PERIMETER FASTENER LOCATIONS FOR
 ELEVATIONS WITH DOORS

DATE 12/29/2005		
DRAWN SCC	CHECKED JDW	APPROVED JDW
PROJECT NO. FLORIDA APPROVAL		
DRAWING NO. FL200-FPA		
SHEET 15 OF 15		

Coral Architectural Products
 3010 RICE MIKE ROAD, TUSCALOOSA, AL 35406
 PHONE: 800-772-7737 FAX: 800-255-1320

REV	BY	DATE	DESCRIPTION